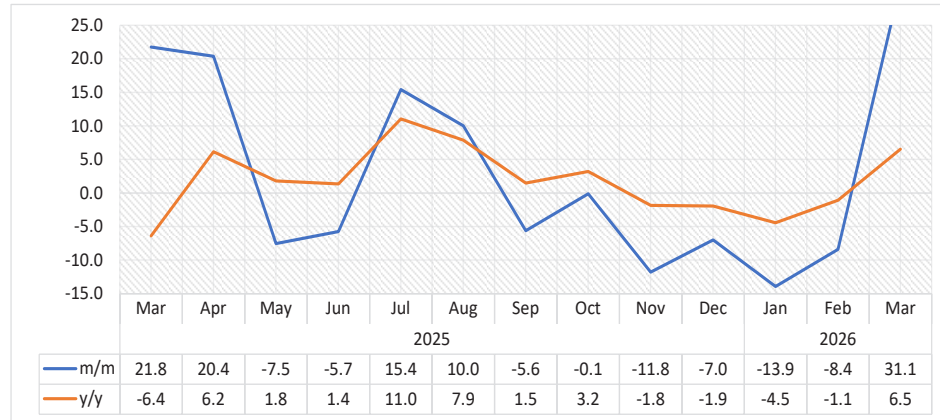


## SECTORAL REPORT

# PASSENGERS ARRIVALS & DEPARTURES MARCH 2026

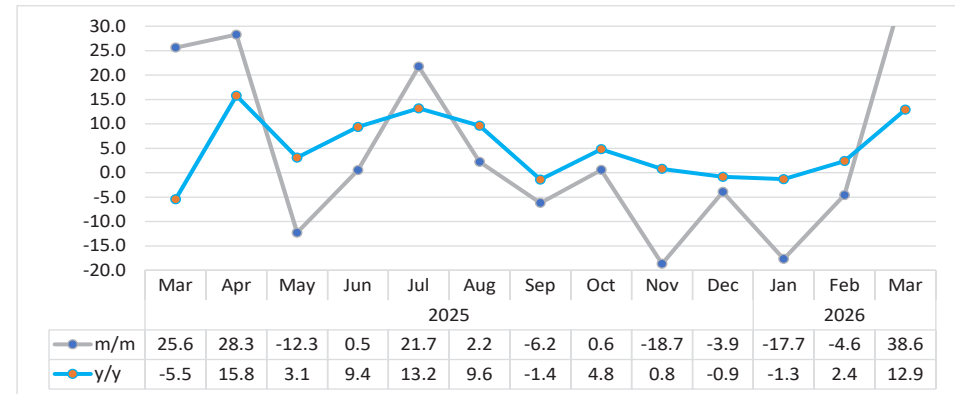
Chart 1: Passengers Movement Composite Index, Percentage Change <sup>1</sup>



- The **Passenger Movement Composite Index**, which captures international, regional, and domestic arrivals and departures across all airports, increased by 31.1 percent in March 2026, reversing 8.4 percent decline in February 2026. On a year-on-year basis, the index also rose by 6.5 percent (Chart 1).
- In absolute terms, a total of 90 658 passenger movements were recorded at airport terminals nationwide in March 2026, up from 69 129 movements noted in February 2026 and 85 098 passengers recorded in the same month of 2025.
- Hosea Kutako International Airport (HKIA) remained the leading hub, accounting for 79.8 percent of total passenger movements in March 2026. It was followed by Walvis Bay Airport with 12.3 percent and Eros Airport with 4.5 percent. The remaining airports each contributed between 2.2 and 0.04 percent of total passenger traffic.

<sup>1</sup> This chart is limited to 25 percent for better readability.

Chart 2: Arrivals Index for Hosea Kutako International Airport, Percentage Change <sup>2</sup>

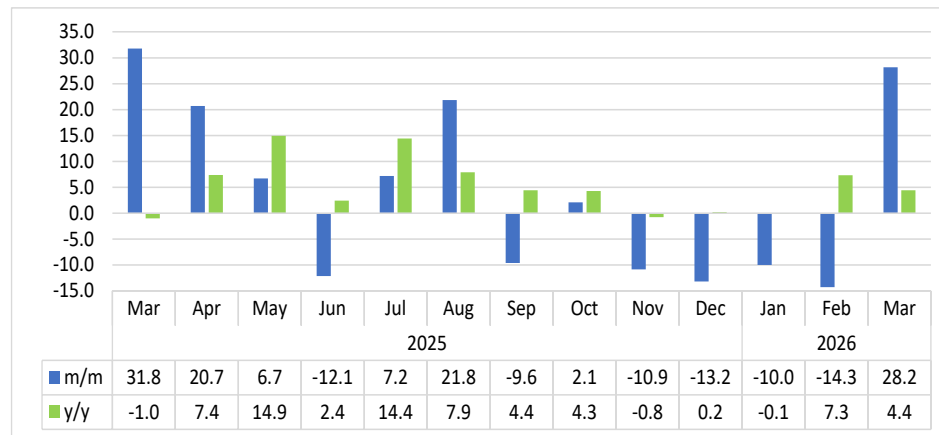


- The **Arrivals Index for Hosea Kutako International Airport** recovered, rising by 38.6 percent on a monthly basis in March 2026 after a 4.6 percent decline in February 2026. On a yearly basis, the index also increased by 12.9 percent compared to March 2025 (Chart 2).
- In absolute terms, 38 616 passengers arrived at Hosea Kutako International Airport in March 2026, up from 27 865 arrivals registered in February 2026 and above 34 195 arrivals recorded in the corresponding month of 2025.

<sup>2</sup> This chart is limited to 30 percent for better readability.

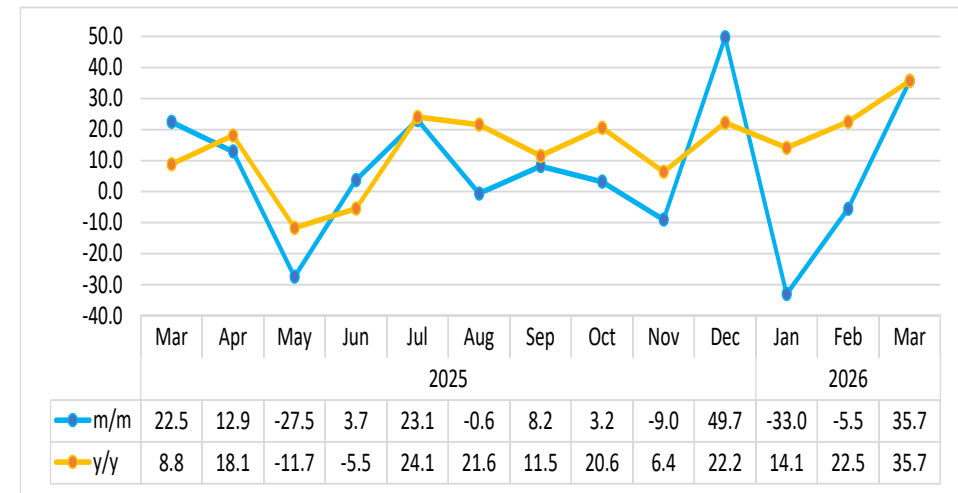
**Chart 3: Departures Index for Hosea Kutako International Airport,**

**Percentage Change**



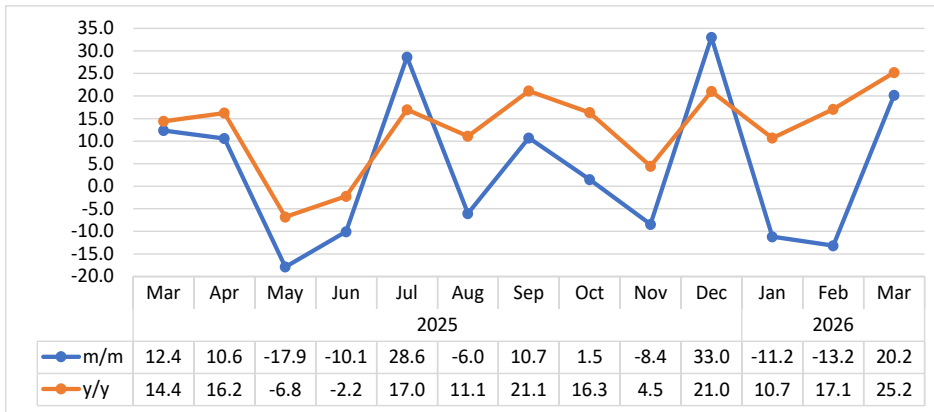
- In March 2026, the **Departures Index for Hosea Kutako International Airport** rebounded, increasing by 28.2 percent after a 14.3 percent decline recorded in February 2026. On a year-on-year basis, the index rose by 4.4 percent (Chart 3).
- In absolute terms, 33 766 passengers departed through Hosea Kutako International Airport in March 2026, up from 26 341 departures in February 2026 and slightly above 32 343 departures recorded in March 2025.

**Chart 4: Arrivals Index for Walvis Bay Airport, Percentage Change**



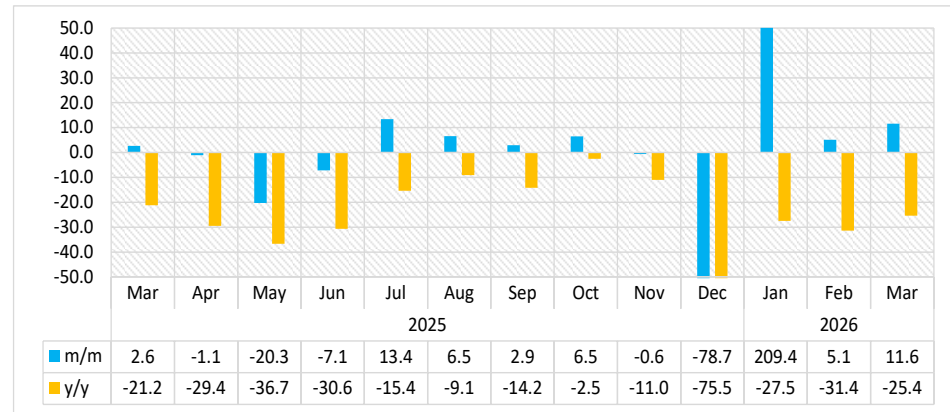
- The **Arrivals Index for Walvis Bay Airport** rose by 35.7 percent in March 2026 compared to the previous month, reversing 5.5 percent decline in February 2026. On a year-on-year basis, the index also increased by 35.7 percent (Chart 4).
- In absolute terms, 5 677 passengers arrived through Walvis Bay Airport in March 2026, up from 4 185 arrivals in February 2026 and above 4 184 arrivals recorded in the same month of 2025.

Chart 5: Departures Index for Walvis Airport, Percentage Change



- In March 2026, the **Departures Index for Walvis Bay Airport** increased by 20.2 percent month-on-month, rebounding from 13.2 percent decline recorded in February 2026. Moreover, on a yearly basis, the index also rose by 25.2 percent (Chart 5).
- In absolute terms, 5 519 passengers departed through Walvis Bay Airport in March 2026, compared to 4 593 in February 2026 and 4 408 departures recorded in the corresponding month of 2025.

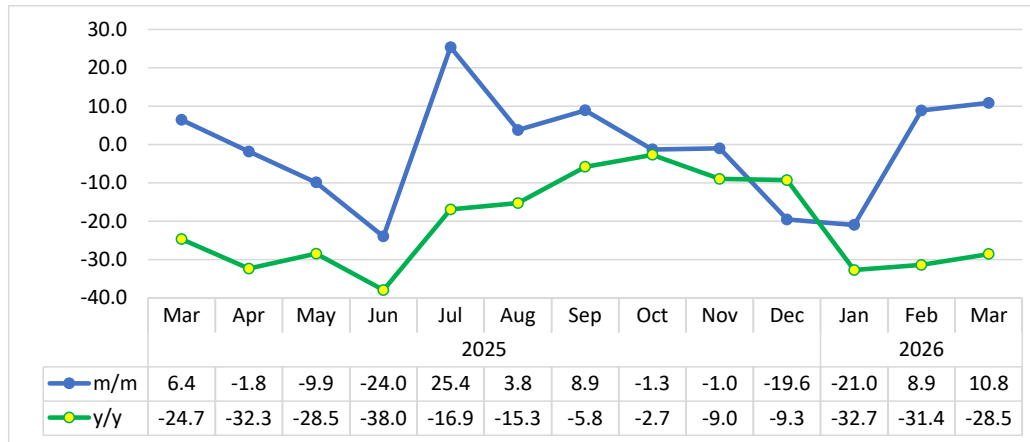
Chart 6: Arrivals Index for Eros Airport, Percentage Change<sup>3</sup>



- The **Arrivals Index for Eros Airport** continued to rise, increasing by 11.6 percent in March 2026, following a 5.1 percent increase in February 2026. However, on a year-on-year basis, the index declined by 25.4 percent (Chart 6).
- In absolute terms, 2 050 passengers arrived through Eros Airport in March 2026, up from 1 837 in February 2026 but below 2 748 arrivals recorded in March 2025.

<sup>3</sup> This chart is limited to -50 and 50 percent for better readability.

**Chart 7: Departures Index for Eros Airport, Percentage Change**



- The **Departures Index for Eros Airport** increased by 10.8 percent month-on-month in March 2026, following 8.9 percent rise in February 2026. However, on a year-on-year basis, the index declined by 28.5 percent (Chart 7).
- In absolute terms, 2 025 passengers departed through Eros Airport in March 2026, up from 1 827 in February 2026 but below 2 834 departures recorded in the same month of 2025.

**Table 1: The indices of regional, international and domestic arrivals and departures**

Year	Month	Total Passengers	Index for (Regional, International & Domestic) Arrivals	Index for (Regional, International & Domestic) Departures
2021	Jan	28.3	26.0	30.7
	Feb	19.7	19.2	20.1
	Mar	27.0	27.5	26.5
	Apr	33.9	34.2	33.5
	May	37.5	36.8	38.3
	Jun	26.8	25.6	28.0
	Jul	21.6	22.6	20.6
	Aug	34.1	34.1	34.2
	Sep	42.4	44.8	40.0
	Oct	58.3	61.2	55.4
	Nov	58.4	61.4	55.4
	Dec	43.7	44.3	43.1
2022	Jan	55.2	41.1	69.4
	Feb	55.3	40.2	70.4
	Mar	83.5	61.8	105.5
	Apr	106.6	76.3	137.2
	May	99.5	72.1	127.3
	Jun	72.9	72.8	73.0
	Jul	94.0	101.4	86.5
	Aug	99.4	98.0	100.8
	Sep	90.4	93.0	87.8
	Oct	99.5	101.9	97.1
	Nov	88.0	83.9	92.3
	Dec	77.8	78.9	76.8
2023	Jan	68.6	66.2	70.9
	Feb	67.7	68.7	66.7
	Mar	90.4	92.5	88.3
	Apr	102.2	102.4	102.1
	May	97.1	95.3	99.0
	Jun	92.8	93.1	92.4
	Jul	113.4	119.9	106.8
	Aug	120.9	121.3	120.4
	Sep	111.6	114.4	108.8
	Oct	116.2	117.9	114.5
	Nov	109.5	106.8	112.2
	Dec	97.7	100.0	95.3

**Table 1: The indices of regional, international and domestic arrivals and departures continue...**

Year	Month	Total Passengers	Index for (Regional, International & Domestic) Arrivals	Index for (Regional, International & Domestic) Departures
2024	Jan	84.4	80.1	88.6
	Feb	85.3	86.6	84.0
	Mar	106.5	108.2	104.8
	Apr	113.1	113.8	112.3
	May	109.0	109.2	108.8
	Jun	103.2	102.0	104.4
	Jul	108.8	115.4	102.1
	Aug	123.2	121.0	125.4
	Sep	123.6	128.0	119.1
	Oct	121.4	121.1	121.6
	Nov	112.6	108.4	116.9
	Dec	104.8	106.6	103.0
2025	Jan	92.6	89.4	95.8
	Feb	81.9	83.9	79.8
	Mar	99.7	100.9	98.5
	Apr	120.0	124.7	115.3
	May	111.0	105.4	116.6
	Jun	104.6	106.5	102.7
	Jul	120.8	128.8	112.6
	Aug	132.9	132.3	133.4
	Sep	125.4	126.7	124.1
	Oct	125.3	125.9	124.6
	Nov	110.5	107.0	114.1
	Dec	102.8	102.9	102.7
2026	Jan	88.4	85.0	91.9
	Feb	81.0	81.7	80.3
	Mar	106.2	111.5	100.9

## ***Methodology***

- Background:** The information in this report looks at both citizen and non-citizen travelers' arrivals and departures.
- Data sources:** Namibia Airports Company
- Base year:** The volumes have been referenced to 2015 data as of November 2019
- Conversion:** 1 basis point = 0.01 percent