



PASSENGERS ARRIVALS & DEPARTURES APRIL 2026

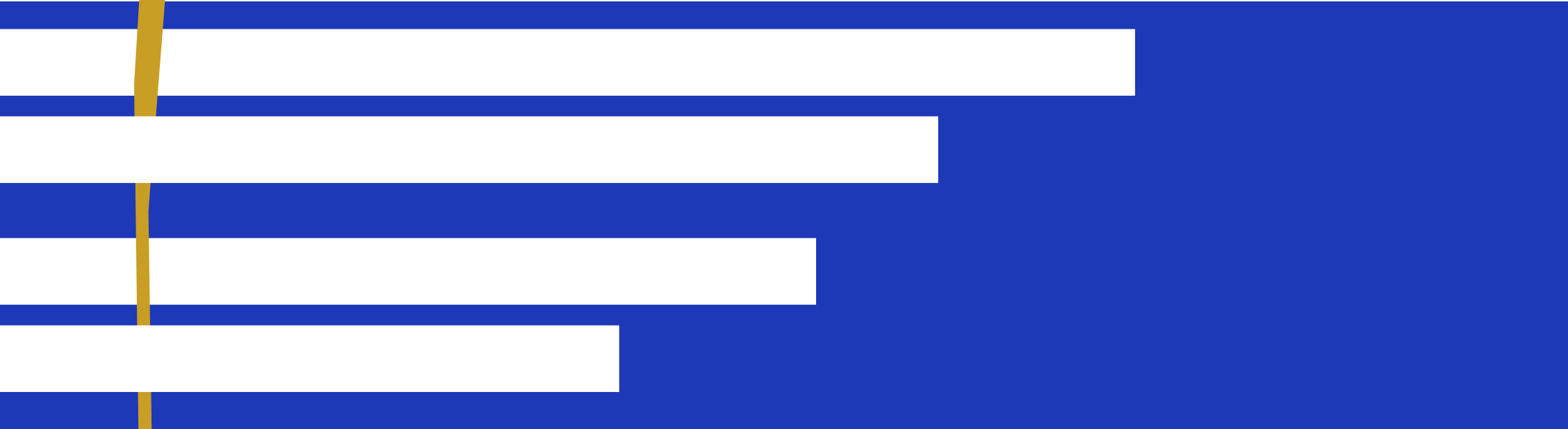
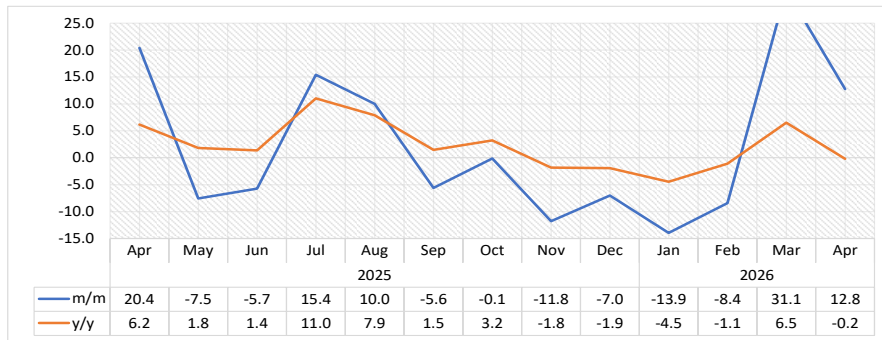


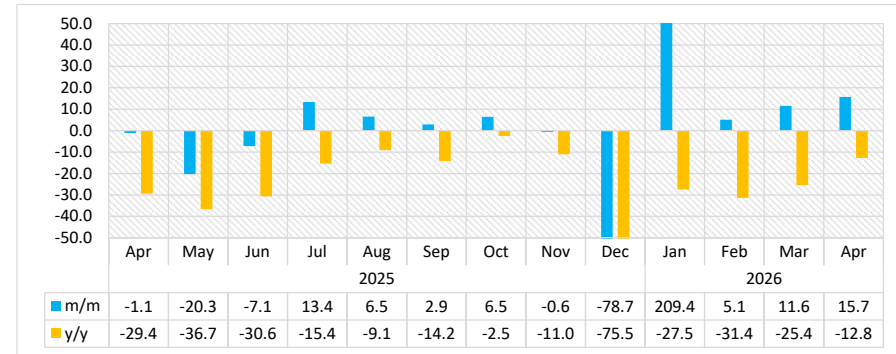
Chart 1: Passengers Movement Composite Index, Percentage Change¹



- The **Passenger Movement Composite Index**, which encompasses international, regional, and domestic passenger arrivals and departures across all airports, continued to grow in April 2026, although at a slower pace, recording a 12.8 percent increase compared to the 31.1 percent rise observed in March 2026. On a year-on-year basis, the index declined by 0.2 percent (Chart 1).
- In volume terms, a total of 102 237 passenger movements were recorded at airport terminals nationwide in April 2026, compared to 90 658 movements in March 2026. However, this was slightly lower than 102 449 passenger movements registered in April 2025.
- Hosea Kutako International Airport (HKIA) remained the dominant gateway, accounting for 79.6 percent of all passenger movements recorded during the month. Walvis Bay Airport ranked second with 10.3 percent share, followed by Eros Airport with 6.3 percent. The remaining airports collectively contributed between 1.8 and 0.03 percent of total passenger traffic during the review period.

¹ This chart is limited to 25 percent for better readability.

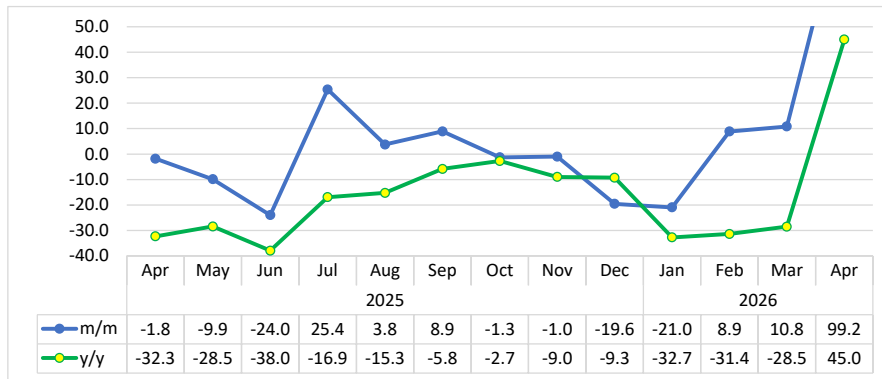
Chart 2: Arrivals Index for Eros Airport, Percentage Change²



- The **Arrivals Index for Eros Airport** continued its upward trend, increasing by 15.7 percent in April 2026, following a 11.6 percent rise recorded in March 2026. Despite the monthly growth, the index declined by 12.8 percent on a yearly basis (Chart 2).
- In absolute terms, 2 372 passengers arrived through Eros Airport in April 2026, up from 2 050 arrivals recorded in March 2026. However, this was below 2 719 passengers who arrived during the corresponding month of 2025.

² This chart is limited to -50 and 50 percent for better readability.

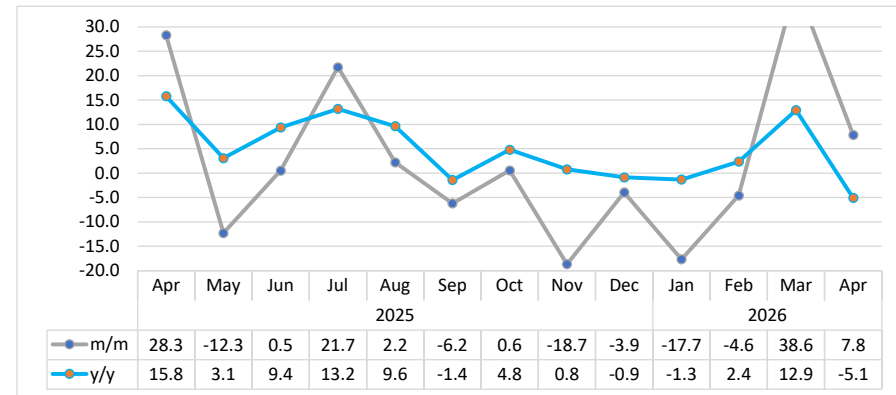
Chart 3: Departures Index for Eros Airport, Percentage Change³



- The **Departures Index for Eros Airport** surged by 99.2 percent on a month-on-month basis in April 2026, following a 10.8 percent increase recorded in March 2026. On a year-on-year basis, the index also registered a 45.0 percent increase (Chart 3).
- In absolute terms, 4 034 passengers departed through Eros Airport in April 2026, up from 2 025 departures recorded in March 2026 and exceeding 2 782 departures registered in April 2025.

³ This chart is limited to 50 percent for better readability.

Chart 4: Arrivals Index for Hosea Kutako International Airport, Percentage Change⁴

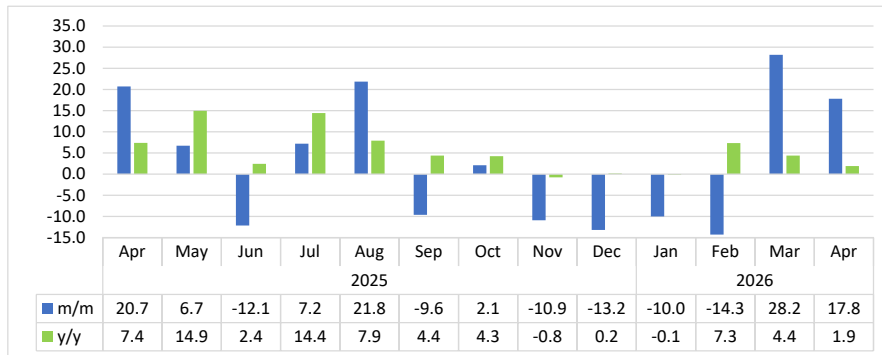


- The **Arrivals Index for Hosea Kutako International Airport** recorded a 7.8 percent increase on a month-on-month basis in April 2026, slowing from 38.6 percent growth registered in March 2026. However, on a year-on-year basis, the index declined by 5.1 percent compared to the corresponding month of 2025 (Chart 4).
- In absolute terms, 41 635 passengers arrived through Hosea Kutako International Airport in April 2026, up from 38 616 arrivals recorded in March 2026 and below 43 869 arrivals registered in the corresponding month of 2025.

⁴ This chart is limited to 30 percent for better readability.

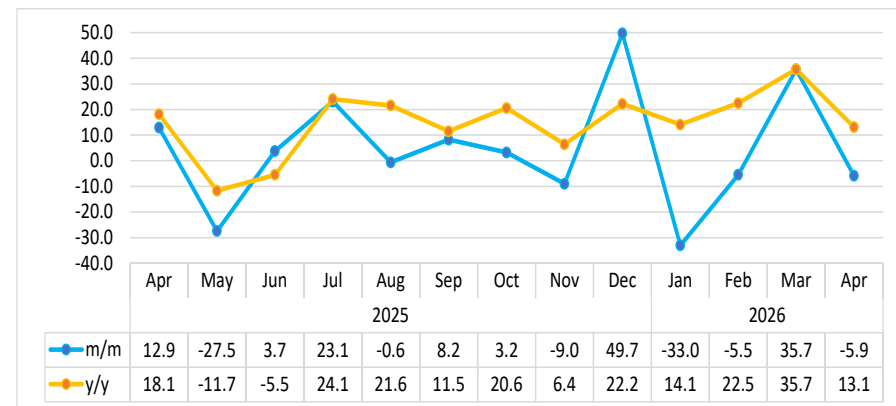
Chart 5: Departures Index for Hosea Kutako International Airport,

Percentage Change



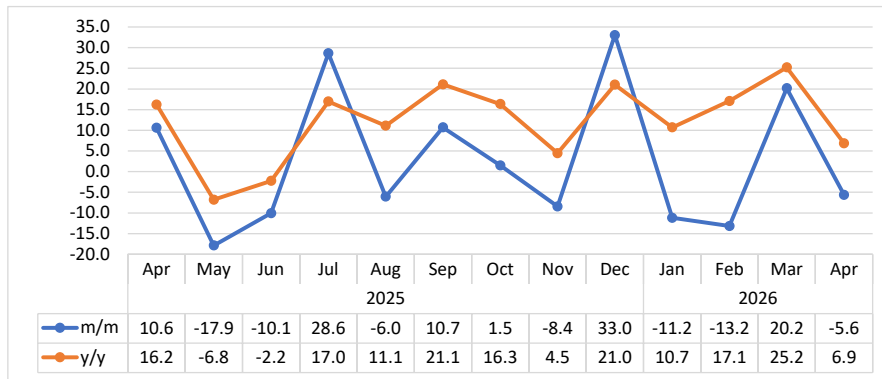
- The **Departures Index for Hosea Kutako International Airport** continued to grow in April 2026, although at a slower pace, recording 17.8 percent increase on a month-on-month basis following a 28.2 percent rise in March 2026. On a yearly basis, the index also rose by 1.9 percent compared to April 2025 (Chart 5).
- In volume terms, 39 783 passengers departed through Hosea Kutako International Airport in April 2026, up from 33 766 departures recorded in March 2026 and slightly higher than 39 035 departures registered in the same month of 2025.

Chart 6: Arrivals Index for Walvis Bay Airport, Percentage Change



- The **Arrivals Index for Walvis Bay Airport** decreased by 5.9 percent on a month-on-month basis in April 2026, following a strong 35.7 percent increase recorded in March 2026. Despite the monthly decline, the index registered a 13.1 percent increase compared to the corresponding month of 2025 (Chart 6).
- In absolute terms, 5 342 passengers arrived through Walvis Bay Airport in April 2026, down from 5 677 arrivals recorded in March 2026, yet higher than 4 724 arrivals registered in April 2025.

Chart 7: Departures Index for Walvis Bay Airport, Percentage Change



- The **Departures Index for Walvis Bay Airport** recorded a 5.6 percent decline on a month-on-month basis in April 2026, reversing the 20.2 percent increase registered in March 2026. Despite the monthly decrease, the index rose by 6.9 percent compared to the corresponding month of 2025 (Chart 7).
- In absolute terms, 5 209 passengers departed through Walvis Bay Airport in April 2026, down from 5 519 departures recorded in March 2026. However, this was higher than 4 875 departures registered in the corresponding month of 2025.

Table 1: The indices of regional, international and domestic arrivals and departures

Year	Month	Total Passengers	Index for (Regional, International & Domestic) Arrivals	Index for (Regional, International & Domestic) Departures
2021	Jan	28.3	26.0	30.7
	Feb	19.7	19.2	20.1
	Mar	27.0	27.5	26.5
	Apr	33.9	34.2	33.5
	May	37.5	36.8	38.3
	Jun	26.8	25.6	28.0
	Jul	21.6	22.6	20.6
	Aug	34.1	34.1	34.2
	Sep	42.4	44.8	40.0
	Oct	58.3	61.2	55.4
	Nov	58.4	61.4	55.4
	Dec	43.7	44.3	43.1
2022	Jan	55.2	41.1	69.4
	Feb	55.3	40.2	70.4
	Mar	83.5	61.8	105.5
	Apr	106.6	76.3	137.2
	May	99.5	72.1	127.3
	Jun	72.9	72.8	73.0
	Jul	94.0	101.4	86.5
	Aug	99.4	98.0	100.8
	Sep	90.4	93.0	87.8
	Oct	99.5	101.9	97.1
	Nov	88.0	83.9	92.3
	Dec	77.8	78.9	76.8
2023	Jan	68.6	66.2	70.9
	Feb	67.7	68.7	66.7
	Mar	90.4	92.5	88.3
	Apr	102.2	102.4	102.1
	May	97.1	95.3	99.0
	Jun	92.8	93.1	92.4
	Jul	113.4	119.9	106.8
	Aug	120.9	121.3	120.4
	Sep	111.6	114.4	108.8
	Oct	116.2	117.9	114.5
	Nov	109.5	106.8	112.2
	Dec	97.7	100.0	95.3

Table 1: The indices of regional, international and domestic arrivals and departures continue...

Year	Month	Total Passengers	Index for (Regional, International & Domestic) Arrivals	Index for (Regional, International & Domestic) Departures
2024	Jan	84.4	80.1	88.6
	Feb	85.3	86.6	84.0
	Mar	106.5	108.2	104.8
	Apr	113.1	113.8	112.3
	May	109.0	109.2	108.8
	Jun	103.2	102.0	104.4
	Jul	108.8	115.4	102.1
	Aug	123.2	121.0	125.4
	Sep	123.6	128.0	119.1
	Oct	121.4	121.1	121.6
	Nov	112.6	108.4	116.9
	Dec	104.8	106.6	103.0
2025	Jan	92.6	89.4	95.8
	Feb	81.9	83.9	79.8
	Mar	99.7	100.9	98.5
	Apr	120.0	124.7	115.3
	May	111.0	105.4	116.6
	Jun	104.6	106.5	102.7
	Jul	120.8	128.8	112.6
	Aug	132.9	132.3	133.4
	Sep	125.4	126.7	124.1
	Oct	125.3	125.9	124.6
	Nov	110.5	107.0	114.1
	Dec	102.8	102.9	102.7
2026	Jan	88.4	85.0	91.9
	Feb	81.0	81.7	80.3
	Mar	106.2	111.5	100.9
	Apr	119.8	119.5	120.1

Methodology

- Background:** The information in this report looks at both citizen and non-citizen travelers' arrivals and departures.
- Data sources:** Namibia Airports Company
- Base year:** The volumes have been referenced to 2015 data as of November 2019
- Conversion:** 1 basis point = 0.01 percent