

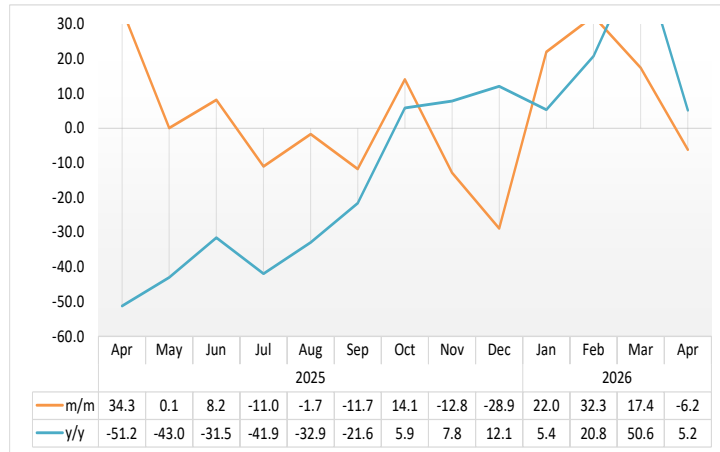


# LIVESTOCK

April 2026

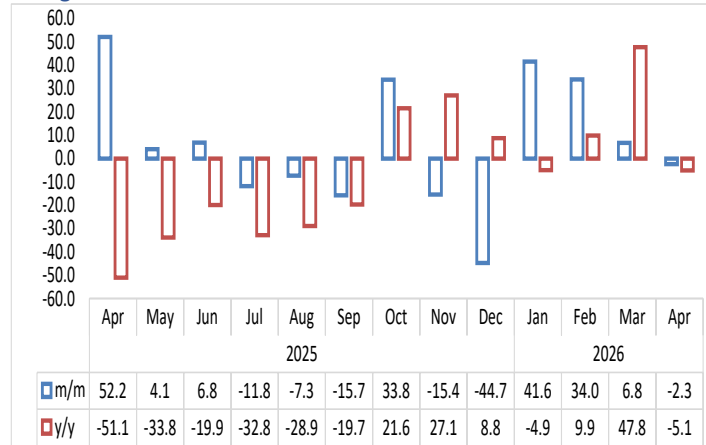


**Chart 1: Livestock Marketed Composite Index, Percentage Change<sup>1</sup>**



- In April 2026, the **Livestock Marketed Composite Index** declined by 6.2 percent, following a growth of 17.4 percent recorded in March 2026. On an annual basis, however, the index increased by 5.2 percent (Chart 1).
- In absolute terms, a total of 101 798 animals were marketed in April 2026, representing a significant decline from the 129 353 animals marketed in March 2026, but slightly higher than the 98 627 animals marketed in April 2025.

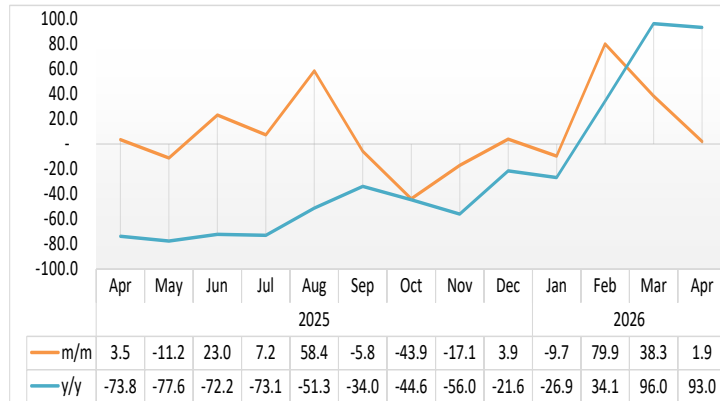
**Chart 2: Cattle Export Approved Abattoirs and Butchers Index, Percentage Change**



- During the period under review, the **Cattle Export to Approved Abattoirs and Butchers Index** decreased by 2.3 percent, following an increase of 6.8 percent recorded in the previous month. On a year-on-year basis, the index also declined by 5.1 percent (Chart 2).
- In absolute terms, 13 341 cattle were marketed to export-approved abattoirs and butchers in April 2026, slightly lower than the 13 654 cattle recorded in March 2026 and notably below the 14 053 cattle marketed during the same month in 2025.

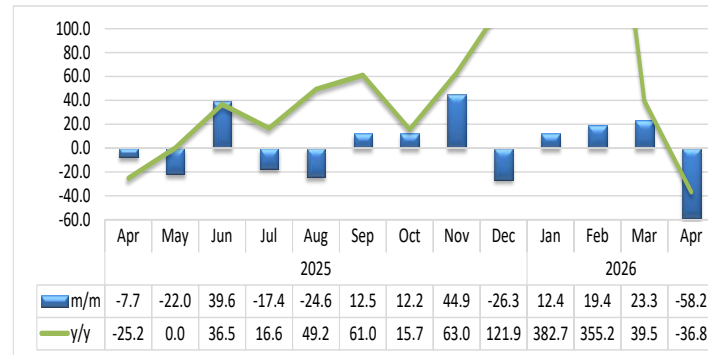
<sup>1</sup> This chart is limited to 30 percent for better readability.

**Chart 3: Live Cattle Exported on Hoof Index, Percentage Change**



- In April 2026, the **Index for Live Cattle Exported on Hoof** increased by 1.9 percent, representing a marked slowdown from the 38.3 percent growth recorded in March 2026. On a year-on-year basis, however, the index surged by 93.0 percent (Chart 3).
- During the month under review, a total of 8 521 live cattle were exported on hoof, slightly higher than the 8 361 cattle recorded in March 2026 and significantly above the 4 414 cattle exported during the corresponding period in April 2025.

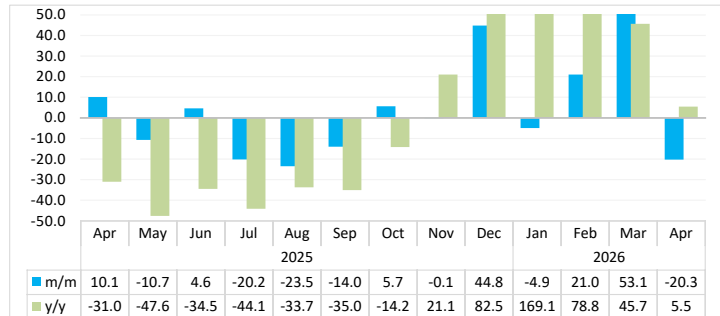
**Chart 4: Small Stock Export Approved Abattoirs and Butchers Index, Percentage Change<sup>2</sup>**



- The **Small Stock Export to Approved Abattoirs and Butchers Index** recorded a significant decline of 58.2 percent in April 2026, following an increase of 23.3 percent recorded in March 2026. On a year-on-year basis, the index also declined by 36.8 percent (Chart 4).
- In absolute terms, 7 321 small stock animals were marketed to export-approved abattoirs and butchers during April 2026. Of these, 7 313 originated from south of the Veterinary Cordon Fence (S-VCF), while only 8 were sourced from north of the Veterinary Cordon Fence (N-VCF).

<sup>2</sup> This chart is limited to 100 percent for better presentation.

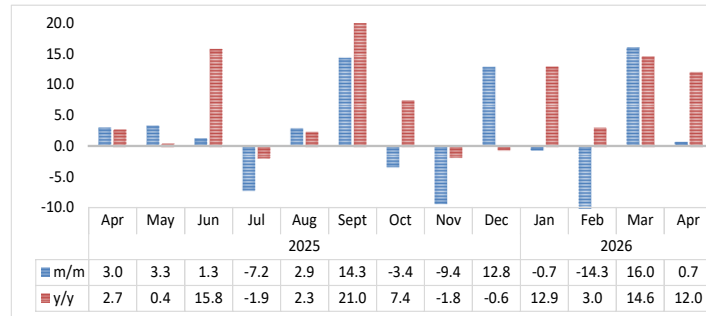
Chart 5: Live Small Stock Export, Percentage Change<sup>3</sup>



- In April 2026, the **Index for Live Small Stock Exports** decreased by 20.3 percent, following a 53.1 percent increase recorded in the preceding month. However, on a year-on-year basis, the index rose by 5.5 percent (Chart 5).
- During the month under review, a total of 67 826 small stock animals were exported live, of which sheep accounted for 83.5 percent and goats for 16.5 percent. This represented a significant decline from the 85 073 live small stock exported in March 2026 but was higher than the 64 304 small stock animals exported live in April 2025.

<sup>3</sup> This chart is limited to 50 percent for better presentation.

Chart 6: Pigs Slaughtered Index, Percentage Change<sup>4</sup>



- The **Pigs Slaughtered Index** in April 2026 recorded a marginal increase of 0.7 percent, slowing from the stronger recovery growth of 16.0 percent observed in the previous month. On a year-on-year basis, the index increased by 12.0 percent (Chart 6).
- A total of 4 789 pigs were slaughtered locally in April 2026, slightly higher than the 4 756 pigs recorded in March 2026 and above the 4 274 pigs slaughtered during the corresponding month in 2025.

<sup>4</sup> This chart is limited to -10 percent and 20 percent for better presentation.

Commented [SS1]: -10 and 20

Table 1: Number of livestock Marketed ('000)

Year	Month	Cattle export abattoirs & butchers	Cattle live exported South Africa & Angola	Small stock Export abattoirs and butchers	Total live small stock exported South Africa and Angola	Pigs slaughtered	Total Livestock Marketed
2021	Jan	4	7	9	7	3	30
	Feb	5	8	11	21	4	49
	Mar	8	11	12	42	4	77
	Apr	8	10	14	41	4	77
	May	8	10	10	54	4	86
	Jun	9	12	11	52	4	88
	Jul	10	14	10	33	4	72
	Aug	9	15	10	25	4	63
	Sep	7	15	10	21	4	57
	Oct	8	13	5	27	4	56
	Nov	6	13	7	29	4	58
	Dec	5	10	5	39	4	62
2022	Jan	8	8	7	20	4	46
	Feb	8	10	7	32	3	61
	Mar	8	11	10	58	4	91
	Apr	12	10	29	66	4	121
	May	10	14	12	73	4	113
	Jun	12	14	16	75	4	121
	Jul	10	16	13	58	3	99
	Aug	8	10	12	34	5	70
	Sep	9	10	12	30	4	64
	Oct	9	16	12	32	4	72
	Nov	9	13	14	40	4	80
	Dec	9	8	19	43	4	83
2023	Jan	8	10	11	21	4	54
	Feb	8	8	16	40	4	75
	Mar	12	12	25	77	4	131
	Apr	12	13	20	89	4	138
	May	15	11	21	80	4	132
	Jun	20	12	19	87	4	142
	Jul	14	16	18	81	4	132
	Aug	15	22	13	65	4	119
	Sep	14	14	11	51	4	94
	Oct	9	10	14	53	4	90
	Nov	11	16	15	55	4	101
	Dec	6	7	15	47	4	78

Table 1: Number of livestock Marketed ('000) continued...

Year	Month	Cattle export abattoirs & butchers	Cattle live exported South Africa & Angola	Small stock Export abattoirs and butchers	Total live small stock exported South Africa and Angola	Pigs slaughtered	Total Livestock Marketed
2024	Jan	9	14	9	33	4	69
	Feb	9	22	11	56	4	101
	Mar	14	21	12	88	4	141
	Apr	29	17	15	93	4	158
	May	22	17	9	110	4	163
	Jun	20	17	9	92	4	142
	Jul	20	19	9	86	4	139
	Aug	18	17	5	55	4	100
	Sep	13	12	5	49	4	83
	Oct	12	8	9	39	4	71
	Nov	10	8	9	28	4	58
	Dec	6	5	5	26	5	47
2025	Jan	10	5	2	17	4	38
	Feb	12	5	3	31	4	54
	Mar	9	4	13	58	4	89
	Apr	14	4	12	64	4	99
	May	15	4	9	57	4	89
	Jun	16	5	13	60	4	98
	Jul	14	5	10	48	4	81
	Aug	13	8	8	37	4	70
	Sept	11	8	9	32	5	64
	Oct	14	4	10	33	5	67
	Nov	12	4	14	33	4	68
	Dec	7	4	11	48	5	74
2026	Jan	10	3	12	46	5	75
	Feb	13	6	14	56	4	93
	Mar	14	8	18	85	5	129
	Apr	13	9	7	68	5	102

Table 2: Indices of Livestock Marketed

Year	Month	Cattle export abattoirs & butchers	Cattle Live export on hoof	Small stock Export abattoirs and butchers	Total live small stock exported South Africa and Angola	Pigs slaughtered	Composite Index
2021	Jan	43.2	32.0	20.4	14.7	105.5	36.8
	Feb	54.3	36.2	25.5	44.6	116.5	46.4
	Mar	78.6	52.1	27.3	87.5	132.6	67.2
	Apr	84.0	45.7	32.5	84.5	116.9	66.8
	May	80.7	47.9	23.6	112.9	114.9	67.9
	Jun	92.2	56.5	26.0	108.3	112.5	75.7
	Jul	105.2	65.7	23.2	69.4	120.1	81.4
	Aug	95.4	68.9	22.8	52.1	122.2	77.0
	Sep	75.3	70.2	22.0	43.5	121.1	67.9
	Oct	79.6	59.7	11.3	57.0	113.2	65.9
	Nov	59.6	61.4	15.4	60.0	119.1	58.7
	Dec	48.5	44.6	10.5	81.0	135.6	49.7
2022	Jan	78.2	38.9	15.4	40.9	115.0	56.6
	Feb	81.3	47.0	16.8	67.2	110.1	63.2
	Mar	83.8	49.9	23.7	121.4	123.6	71.0
	Apr	124.6	47.3	67.0	136.6	128.4	92.4
	May	101.2	65.1	28.3	151.4	129.7	87.3
	Jun	118.0	67.0	35.9	156.2	122.5	96.0
	Jul	96.6	73.1	30.3	120.3	102.9	84.9
	Aug	79.1	48.6	28.3	71.8	146.2	65.3
	Sep	86.0	46.0	28.4	62.0	117.8	65.5
	Oct	86.7	73.4	27.1	67.4	122.5	76.6
	Nov	94.2	60.5	32.2	82.9	139.4	77.3
	Dec	89.0	37.6	43.6	90.3	119.2	67.4
2023	Jan	76.3	46.1	25.9	44.3	120.9	59.8
	Feb	80.5	39.1	35.5	83.0	117.4	62.9
	Mar	124.9	58.4	56.6	161.1	116.1	97.6
	Apr	119.6	61.5	46.5	185.4	116.5	97.8
	May	149.5	52.4	49.1	167.5	135.0	106.5
	Jun	196.6	58.5	44.4	181.7	116.2	129.3
	Jul	143.0	73.0	41.0	168.4	120.5	110.4
	Aug	147.8	104.1	30.5	134.6	117.5	120.2
	Sep	143.8	65.2	26.3	105.6	113.8	101.0
	Oct	94.0	47.0	33.0	109.6	126.9	74.1
	Nov	106.8	74.5	34.3	115.4	123.0	90.4
	Dec	58.6	31.7	33.6	97.3	125.1	52.1

Table 2: Indices of Livestock Marketed continued....

Year	Month	Cattle export abattoirs & butchers	Cattle Live export on hoof	Small stock Export abattoirs and butchers	Total live small stock exported South Africa and Angola	Pigs slaughtered	Composite Index
2024	Jan	87.6	67.8	19.8	68.7	137.3	74.9
	Feb	89.5	101.3	25.0	116.2	122.7	92.2
	Mar	144.6	100.7	28.2	183.8	130.8	122.1
	Apr	289.1	78.8	35.5	194.1	132.6	177.6
	May	222.4	82.0	20.7	228.4	140.2	152.1
	Jun	196.4	81.4	21.1	191.1	123.1	137.0
	Jul	206.4	90.1	20.5	178.6	134.9	143.7
	Aug	180.8	78.8	12.1	115.3	133.0	122.3
	Sep	135.0	54.8	12.6	101.2	128.6	92.4
	Oct	119.4	36.6	19.6	80.9	139.8	78.0
	Nov	96.6	38.2	20.2	57.4	138.7	66.8
	Dec	62.4	22.3	10.9	55.1	154.5	45.7
2025	Jan	101.0	21.5	5.6	35.5	135.1	59.3
	Feb	117.1	21.1	7.1	64.7	126.9	68.5
	Mar	93.0	20.0	28.7	121.6	132.3	64.5
	Apr	141.5	20.7	26.5	133.9	136.3	86.6
	May	147.3	18.4	20.7	119.7	140.8	86.7
	Jun	157.3	22.6	28.9	125.2	142.6	93.8
	Jul	138.7	24.2	23.8	99.9	132.3	83.5
	Aug	128.6	38.4	18.0	76.4	136.1	82.0
	Sep	108.5	36.1	20.2	65.8	155.6	72.4
	Oct	145.1	20.3	22.7	69.5	150.2	82.6
	Nov	122.8	16.8	32.9	69.4	136.1	72.0
	Dec	67.8	17.5	24.3	100.6	153.6	51.2
2026	Jan	96.1	15.8	27.3	95.6	152.5	62.5
	Feb	128.7	28.3	32.5	115.7	130.7	82.7
	Mar	137.5	39.2	40.1	177.2	151.6	97.1
	Apr	134.4	39.9	16.8	141.3	152.7	91.1

- Data Sources** : The data was obtained from the Livestock and Livestock Products Board of Namibia.
- Base year** : Livestock Sectoral report is harmonized with the quarterly and annual national accounts base year 2015.
- Sector Classification** : The ISIC CODE for this sector is 4620 for live animals and 4621 for slaughtered animals.
- Calculations of index** : The index is calculated based on the 2015 base year volumes and 2015 weights. The index is the magnitude of the volume. Changes over time, with reference to the volume of the base year 2015. The index is calculated as a ratio of the volume of a specific component in a specific month to the total volume of that component in 2015.
- Conversion** : 1 basis point = 0.01 percent
- Revision** : Data was revised based on the new dataset received from data sources.