

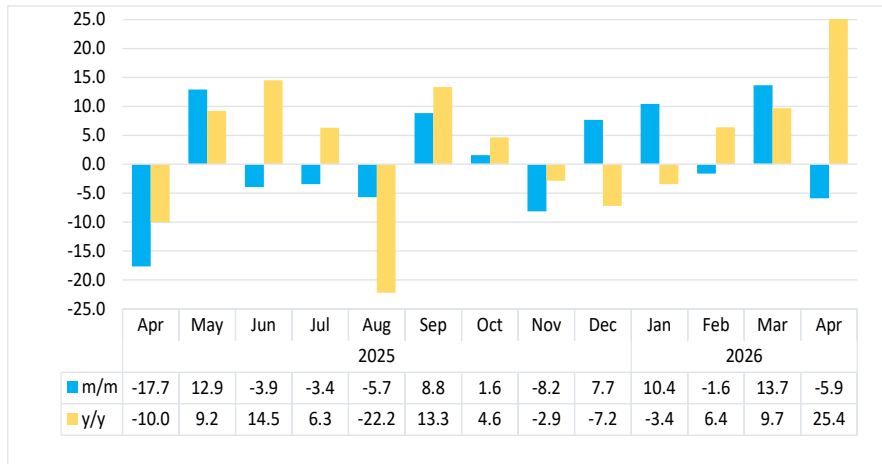


ELECTRICITY

April 2026

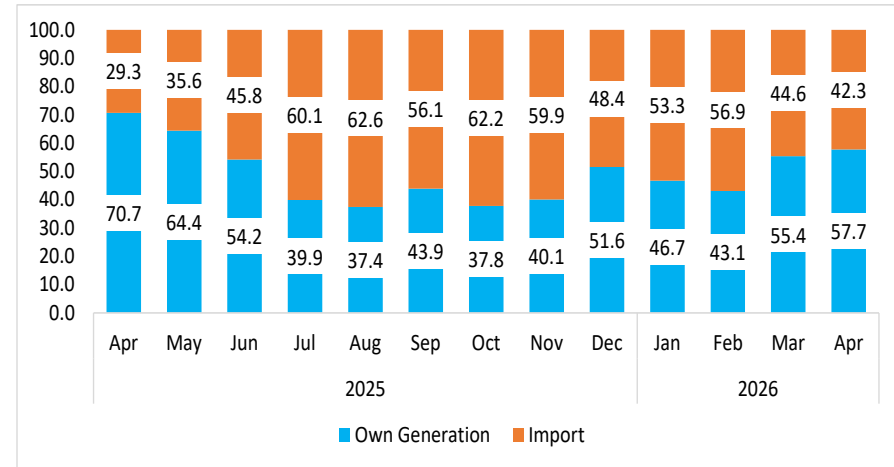


Chart 1: Electricity Sources Composite Index, Percentage Change¹



- The **Electricity Sources Composite Index**, which comprises both local electricity generation and imports, declined by 5.9 percent in April 2026 after recording an increase of 13.7 percent in March 2026. On a year-on-year basis, the index increased by 25.4 percent (Chart 1).
- During the review period, total electricity supplied to the domestic economy stood at 482 201 MWh, compared to 512 289 MWh supplied in March 2026 and higher than the 384 492 MWh supplied in April 2025.

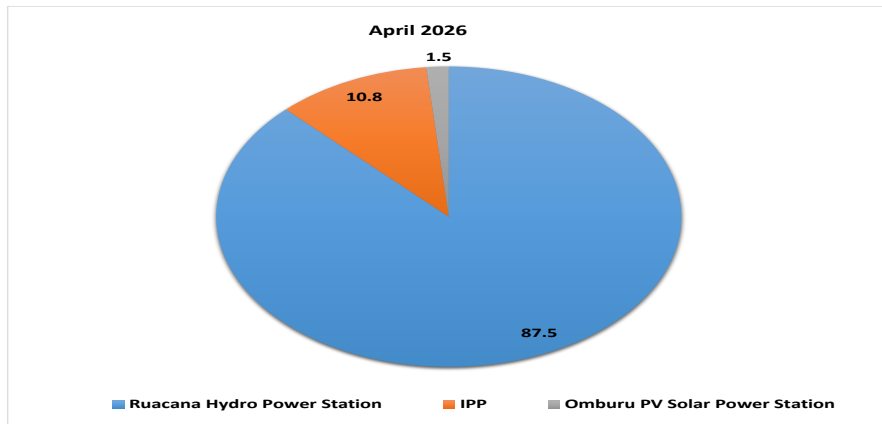
Chart 2: Share of Sources of Electricity, in Percent



- In April 2026, local electricity generation made up 57.7 percent (278 325 MWh) of the total electricity supplied to the domestic economy, while imports accounted for the remaining 42.3 percent (203 877 MWh). This trend is consistent with the patterns observed in March 2026 and April 2025, where local generation remained the main source of electricity supply.

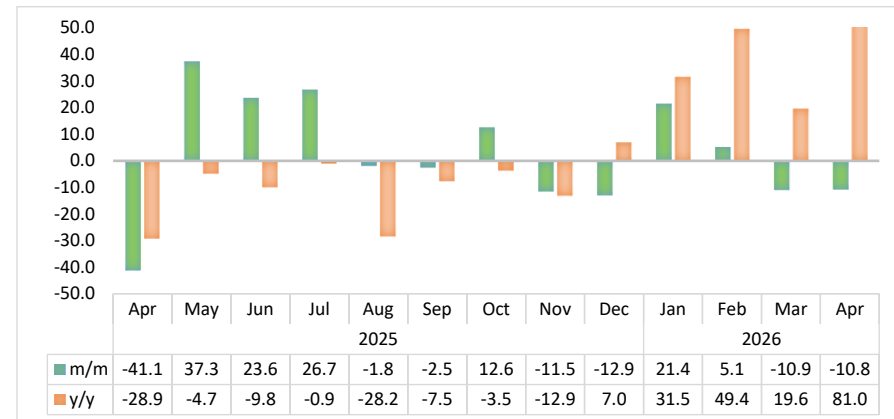
¹ This chart is limited to 25 percent for better readability.

Chart 3: Share of Electricity for Own Generation, in Percent



- In April 2026, total local electricity generation amounted to 278 325 MWh. Ruacana Hydro Power Station remained the main source of generation, producing 243 581 MWh, which represented 87.5 percent of the total output. Independent Power Producers (IPPs) followed with 30 003 MWh, contributing 10.8 percent, while the Omburu PV Solar Power Station generated 4 303 MWh, accounting for 1.5 percent of total local generation.
- Anixas 2 Diesel Power Station ranked fourth, generating 438 MWh or 0.2 percent of total electricity output during the period under review. Meanwhile, both Van Eck Power Station and Anixas 1 Diesel Power Station did not record any electricity generation during the month (Chart 3).

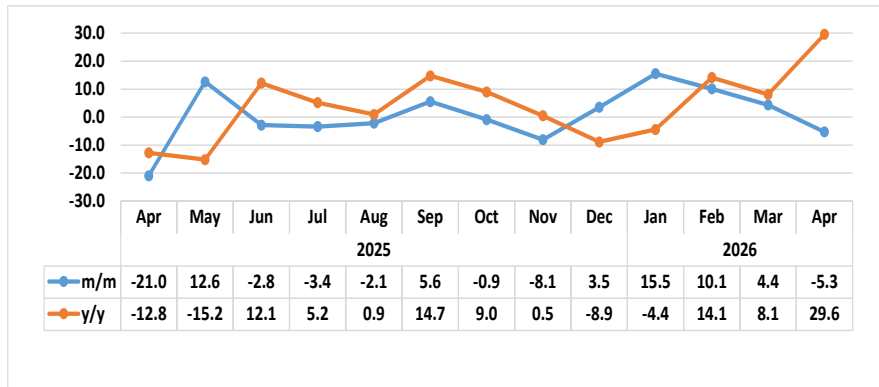
Chart 4: Electricity Import Index, Percentage Change²



- The **Electricity Import Index** decreased by 10.8 percent month-on-month in April 2026, following a similar decline of 10.9 percent recorded in March 2026. On an annual basis, however, the index increased significantly by 81.0 percent (Chart 4).
- In absolute terms, Namibia imported a total of 203 877 MWh of electricity during April 2026.
- Zesco of Zambia remained the largest source of Namibia’s electricity imports, supplying 43.2 percent of total electricity imports. Eskom Aggeneis of South Africa followed with a contribution of 31.9 percent, while Zimbabwe Power Company (ZPC) of Zimbabwe accounted for 19.0 percent. Eskom Orange River and the Southern African Power Pool (SAPP) Day-Ahead Market ranked fourth and fifth, contributing 5.5 percent and 0.4 percent, respectively.

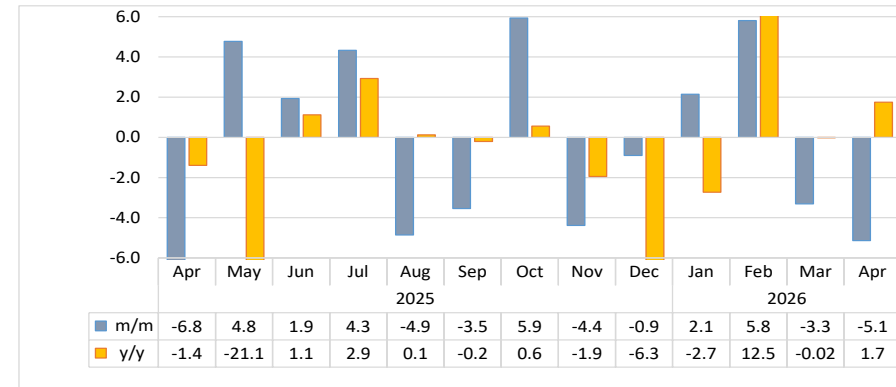
² This chart is limited to 50 percent for better readability.

Chart 5: Electricity Sales Composite Index, Percentage Change



- The **Electricity Sales Composite Index** declined by 5.3 percent on a month-on-month basis in April 2026, following an increase of 4.4 percent recorded in March 2026. Despite the monthly decline, the index recorded an increase of 29.6 percent compared to the corresponding period in 2025 (Chart 5).
- In terms of volume, electricity sales stood at 436 896 MWh in April 2026, down from 461 152 MWh recorded in March 2026, but higher than the 337 098 MWh sold in April 2025.

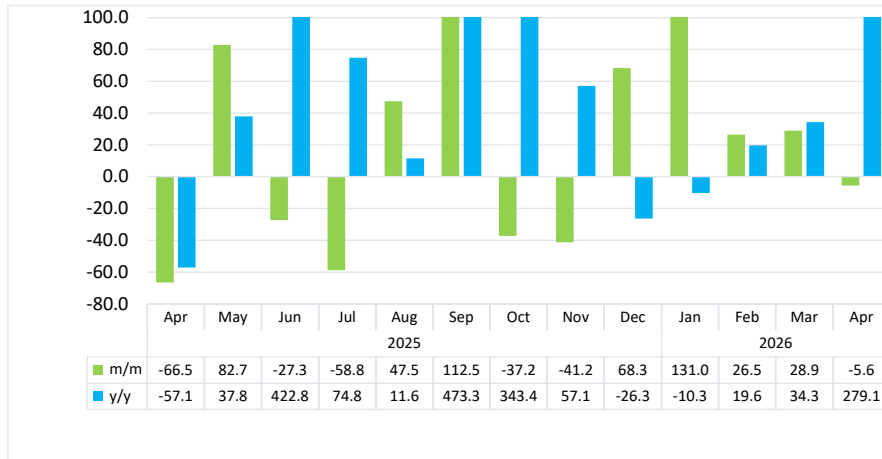
Chart 6: Electricity Domestic Sales Index, Percentage Change³



- The **Domestic Electricity Sales Index** recorded a decline of 5.1 percent in April 2026, following a 3.3 percent decrease registered in March 2026. On a year-on-year basis, however, the index increased by 1.7 percent (Chart 6).
- Total domestic electricity sales amounted to 308 547 MWh in April 2026, down slightly from 325 260 MWh recorded in the preceding month, but marginally higher than the 303 241 MWh sold in April 2025. Redistributors – LPU accounted for the largest share of domestic electricity sales of 68.1 percent, followed by the mining sector with 23.6 percent and Eskom Orange River with 3.7 percent.
- Electricity sales to farms under the main supply category contributed 1.4 percent of total domestic consumption. Meanwhile, the “Water Pumping” and “Commercial – LPU” categories ranked fifth and sixth, accounting for 0.84 percent and 0.78 percent, respectively.

³ This chart is limited to -6 and 6 percent for better readability.

Chart 7: Electricity Export Sales Index, Percentage Change⁴



- The **Electricity Export Sales Index** declined by 5.6 percent in April 2026, following a substantial increase of 28.9 percent recorded in March 2026. On a year-on-year basis, however, the index surged by 279.1 percent compared to April 2025 (Chart 7).
- During the month under review, Namibia exported a total of 128 349 MWh of electricity. The bulk of these exports (98.4 percent) was destined for STEM Sales – SAPP. Botswana Power Corporation was the second-largest export destination, accounting for 0.9 percent of total exports, while Angola and South Africa’s Rietfontein accounted for 0.37 percent and 0.36 percent, respectively.

⁴ This chart is limited to 100 percent for better readability.

Table 1: Electricity Sources in MWH

Year	Month	Own generated	Import
2023	Jan	174 396	195 004
	Feb	208 340	147 774
	Mar	116 256	250 059
	Apr	232 039	172 956
	May	266 144	146 833
	Jun	191 672	179 945
	Jul	160 051	216 521
	Aug	150 729	204 813
	Sept	123 030	221 823
	Oct	131 052	228 332
	Nov	177 168	210 293
	Dec	288 544	160 000
2024	Jan	290 188	151 871
	Feb	271 269	173 999
	Mar	288 783	165 456
	Apr	268 882	158 522
	May	235 280	162 218
	Jun	152 224	211 944
	Jul	134 370	244 343
	Aug	157 001	331 071
	Sep	114 040	250 592
	Oct	130 570	270 488
	Nov	131 556	265 272
	Dec	259 295	187 890
2025	Jan	288 909	185 642
	Feb	251 954	171 773
	Mar	275 941	191 134
	Apr	271 855	112 637
	May	279 548	154 606
	Jun	225 897	191 153
	Jul	160 531	242 151
	Aug	141 962	237 734
	Sep	181 467	231 801
	Oct	158 743	260 959
	Nov	154 551	230 926
	Dec	213 957	201 024

Table 1: Electricity Sources in MWH continue...

Year	Month	Own generated	Import
2026	Jan	214 134	244 058
	Feb	194 110	256 624
	Mar	283 738	228 551
	Apr	278 325	203 877

Table 2: Electricity Sources Index (2015=100)

Year	Month	Own generated Index	Import Index	Electricity Sources Composite Index
2023	Jan	157.8	81.9	105.9
	Feb	188.6	62.0	102.1
	Mar	105.2	105.0	105.0
	Apr	210.0	72.6	116.1
	May	240.9	61.6	118.4
	Jun	173.5	75.5	106.6
	Jul	144.9	90.9	108.0
	Aug	136.4	86.0	102.0
	Sep	111.4	93.1	98.9
	Oct	118.6	95.8	103.1
	Nov	160.4	88.3	111.1
	Dec	261.2	67.2	128.6
2024	Jan	262.6	63.7	126.8
	Feb	245.5	73.0	127.7
	Mar	261.4	69.4	130.3
	Apr	243.4	66.5	122.6
	May	213.0	68.1	114.0
	Jun	137.8	89.0	104.4
	Jul	121.6	102.6	108.6
	Aug	142.1	139.0	140.0
	Sep	103.2	105.2	104.6
	Oct	118.2	113.5	115.0
	Nov	119.1	111.3	113.8
	Dec	234.7	78.9	128.2
2025	Jan	261.5	77.9	136.1
	Feb	228.0	72.1	121.5
	Mar	249.8	80.2	133.9
	Apr	246.1	47.3	110.3
	May	253.0	64.9	124.5
	Jun	204.5	80.2	119.6
	Jul	145.3	101.6	115.5
	Aug	128.5	99.8	108.9
	Sep	164.2	97.3	118.5
	Oct	143.7	109.5	120.4
	Nov	139.9	96.9	110.5
	Dec	193.7	84.4	119.0

Table 2: Electricity Sources Index (2015=100) continue...

Year	Month	Own generated Index	Import Index	Electricity Sources Composite Index
2026	Jan	193.8	102.4	131.4
	Feb	175.7	107.7	129.3
	Mar	256.8	95.9	146.9
	Apr	251.9	85.6	138.3

Table 3: Electricity Sales in MWH

Year	Month	Domestic Sales	Export Sales
2023	Jan	314 507	11 777
	Feb	321 345	30 395
	Mar	318 289	9 072
	Apr	302 068	46 496
	May	310 238	38 042
	Jun	300 076	28 321
	Jul	313 495	11 618
	Aug	298 484	19 279
	Sep	303 727	5 645
	Oct	314 812	4 856
	Nov	320 895	25 344
	Dec	310 580	75 727
2024	Jan	316 402	75 037
	Feb	305 879	88 484
	Mar	318 457	80 859
	Apr	307 526	78 837
	May	402 701	44 885
	Jun	320 287	8 604
	Jul	328 280	10 607
	Aug	321 103	24 496
	Sep	310 744	10 131
	Oct	326 678	8 229
	Nov	320 317	13 654
	Dec	332 222	48 969
2025	Jan	326 862	92 945
	Feb	298 987	88 146
	Mar	325 329	101 189
	Apr	303 241	33 857
	May	317 729	61 873
	Jun	323 864	44 983
	Jul	337 895	18 537
	Aug	321 495	27 336
	Sep	310 108	58 085
	Oct	328 497	36 483
	Nov	314 092	21 446
	Dec	311 270	36 104

Table 3: Electricity Sales in MWH continue...

Year	Month	Domestic Sales	Export Sales
2026	Jan	317 935	83 387
	Feb	336 402	105 448
	Mar	325 260	135 892
	Apr	308 547	128 349

Table 4: Electricity Sales Index

Year	Month	Domestic Sales Index	Export Index	Electricity Sales Composite Index
2023	Jan	116.9	151.4	117.8
	Feb	119.4	390.7	127.0
	Mar	118.3	116.6	118.2
	Apr	112.3	597.6	125.9
	May	115.3	489.0	125.8
	Jun	111.5	364.0	118.6
	Jul	116.5	149.3	117.4
	Aug	110.9	247.8	114.8
	Sep	112.9	72.6	111.7
	Oct	117.0	62.4	115.5
	Nov	119.2	325.8	125.1
	Dec	115.4	973.4	139.5
2024	Jan	117.6	964.5	141.4
	Feb	113.7	1 137.3	142.4
	Mar	118.3	1 039.3	144.2
	Apr	114.3	1 013.3	139.5
	May	149.6	576.9	161.7
	Jun	119.0	110.6	118.8
	Jul	122.0	136.3	122.4
	Aug	119.3	314.9	124.8
	Sep	115.5	130.2	115.9
	Oct	121.4	105.8	121.0
	Nov	119.0	175.5	120.6
	Dec	123.5	629.4	137.7
2025	Jan	121.5	1 194.7	151.6
	Feb	111.1	1 133.0	139.8
	Mar	120.9	1 300.6	154.0
	Apr	112.7	435.2	121.7
	May	118.1	795.3	137.1
	Jun	120.4	578.2	133.2
	Jul	125.6	238.3	128.7
	Aug	119.5	351.4	126.0
	Sep	115.2	746.6	133.0
	Oct	122.1	468.9	131.8
	Nov	116.7	275.7	121.2
	Dec	115.7	464.1	125.5

Table 4: Electricity Sales Index continue...

Year	Month	Domestic Sales Index	Export Index	Electricity Sales Composite Index
2026	Jan	118.1	1 071.8	144.9
	Feb	125.0	1 355.4	159.6
	Mar	120.9	1 746.7	166.6
	Apr	114.7	1 649.7	157.8

Methodology : Graphical and tabular analysis

Data Sources : The data source for the volume of electricity is sourced from NamPower. These are data on domestic and export sale, Own Generation (local production) and import sources. The Production is in Kilowatts per hour (kWh) for all the variables.

Index calculation: The index of sales and sources weighted uses the volume data of 2015.

Conversion : 1 basis point = 0.01 percent