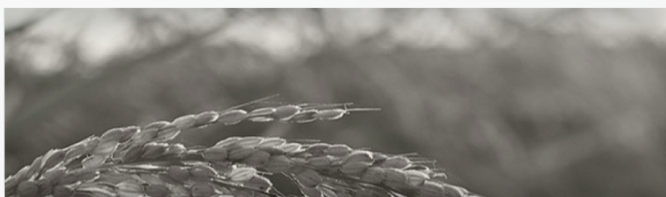
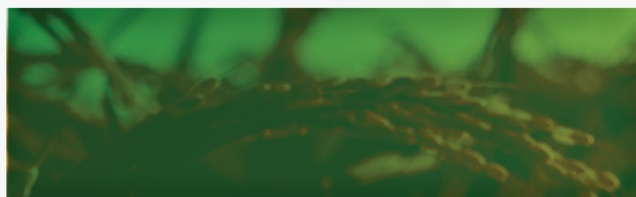
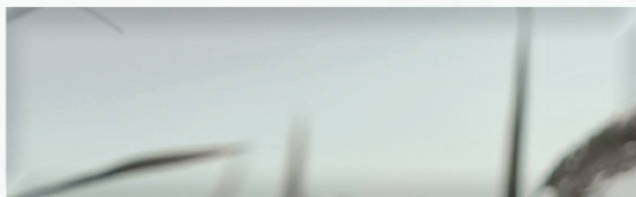




Namibia Statistics  
Agency



# Agriculture and Fishing Indicators Statistical Bulletin



First Quarter 2026

## **MISSION STATEMENT**

“Leveraging on partnerships and innovative technologies, to produce and disseminate relevant, quality, timely statistics and spatial data that are fit-for-purpose.”

## **VISION STATEMENT**

“To be a high performing and sustainable institution in quality statistics and spatial data delivery for research, planning, and decision-making”

## **CORE VALUES**

Integrity

Excellent Performance

Professionalism

Accountability

Partnerships

Customer-focused

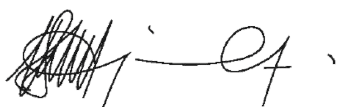
## PREFACE

The Quarterly Agriculture and Fishing Indicator Statistical Bulletin provides a synopsis of the agriculture and fishing indicators for Namibia. The objective of the bulletin is to illustrate the short-term dynamics of the sectors by looking at the production of crops, fish landings, international merchandise trade patterns, and auction prices development on a quarterly basis. The statistical bulletin will assist users, such as analysts, researchers, and policy makers in their planning and decision-making process as well as carrying out in-depth analyses of the sector. This publication outlines the first quarter of 2026 results (January 2026 to March 2026).

During the first quarter of 2026, production of controlled agronomy (White maize, Pearl Millet and Wheat) stood at 2 171 tonnes, compared to 1 637 tonnes recorded in the corresponding quarter of 2025. Specifically, Wheat, White maize and Pearl Millet production stood at 1 565 tonnes, 597 tonnes and 9 tonnes, respectively. During the review period, the value of export for agronomy was N\$303.0 thousand compared to N\$ 1 763.0 thousand recorded in the same quarter of 2025. The import bill registered for agronomy products in the first quarter of 2026 was N\$467.7 million compared to N\$976.6 million registered in the corresponding quarter of 2025.

The total of quota species during the first quarter of 2026 amounted to 92 853 metric tonnes, a decrease of 5.6 percent when compared to 98 389 metric tonnes recorded in the corresponding quarter of 2025. Fish products registered export earnings of N\$4.4 billion during the reporting period compared to N\$4.1 billion recorded during the first quarter of 2025. The import bill for fish products during the first quarter of 2026 stood at N\$159.0 million compared to N\$122.7 million recorded in the same quarter of 2025. This resulted in a trade surplus for fish products amounting to N\$4.2 billion.

In conclusion, the NSA would like to express appreciation to all data providers, without whose contributions this bulletin would not have been possible. The NSA would like to urge readers and users of this bulletin to send to us any comments that may enhance statistical production and contribute to the improvement of this publication at [info@nsa.org.na](mailto:info@nsa.org.na)



**Alex Shimuafeni**

**STATISTICIAN-GENERAL & CEO**

**Windhoek, June 2026**

## Table of Contents

.....	<b>Error! Bookmark not defined.</b>
PREFACE.....	iii
LIST OF FIGURES .....	v
LIST OF TABLES.....	vi
1. INTRODUCTION .....	1
2. REVISIONS.....	2
3. AGRONOMY INDICATORS .....	4
4. HORTICULTURE INDICATORS.....	6
4.1 TRADE OF SELECTED HORTICULTURE PRODUCTS.....	6
5. LIVESTOCK AUCTIONS.....	8
6. FISHING INDICATORS .....	10
TECHNICAL NOTE.....	13
CLASSIFICATION AND STANDARDS .....	13

## LIST OF FIGURES

Figure 1: Geographic and National boundaries of Namibia .....	1
Figure 2: Average weighted Livestock auction prices in N\$ per kg.....	9
Figure 3: Export of Fish and crustaceans, molluscs and other aquatic invertebrates in Million N\$ .....	11
Figure 4: Import of Fish and crustaceans, molluscs and other aquatic invertebrates in Million N\$.....	12

## LIST OF TABLES

Table 1: Production for agronomy revisions for fourth quarter 2025 in tonnes.....	2
Table 2: Trade flow revisions for Horticulture products for the fourth quarter 2025 in million N\$ .....	2
Table 3: Fish landings revisions for fourth quarter 2025 in tonnes .....	3
Table 4: Trade flow revisions for 'Fish and crustaceans, molluscs and other aquatic invertebrates' for fourth quarter 2025 in million N\$ .....	3
Table 5: Type of Agronomy products in tonnes .....	4
Table 6: Export of Agronomy products in thousand N\$ .....	5
Table 7: Import of Agronomy products in million N\$ .....	5
Table 8: Export of selected Horticulture products in million N\$ .....	6
Table 9: Import of selected Horticulture products in million N\$ .....	7
Table 10: Number of Livestock auctioned .....	8
Table 11: Landings of fish quota species by type in metric tonnes .....	10

## 1. INTRODUCTION

The agriculture and fishing activities covered in this bulletin are undertaken both on-shore and off-shore within Namibia's territory. Namibia's landscape consists generally of five geographical areas, each with characteristic abiotic conditions and vegetation with some variation within and overlaps between the Central Plateau, the Namib Desert, the Great Escarpment, the Bushveld, and the Kalahari Desert. Regarding population dynamics, the total population of Namibia was reported to be 3.0 million in 2023 indicating an intercensal annual average growth rate of 3.0 percent between 2011 and 2023 according to the Namibia 2023 Population and Housing Census Main Report (NSA, 2023).

Figure 1: Geographic and National boundaries of Namibia

### Namibia: What is in there?

- Namibia Total Area Size (**Landmass +Sea**) **1,337,307 Sqkm**
- Namibia land mass estimated (**824,292 Sqkm**)
- Sea surface area is estimated (**513,015 Sqkm**)
- **Territorial waters** (23,541 Sqkm)
- **Exclusive Economic Zone** (489,474 Sqkm)
- 14 Regions
- 121 Constituencies
- 57 Local Authorities



The agriculture, forestry and fishing sector is a foundational pillar of the Namibian economy driving growth, alleviating poverty, improving food security, creating employment and income, and providing raw materials for industries. The purpose of this bulletin is to provide selected indicators for livestock, crops and fishing to reflect the sector's performance during the first quarter of 2026 (January - March). Data used in this bulletin is based on secondary and administrative sources. Results in this publication are presented in tables and graphs with growth rates, values, and numbers for different estimates.

## 2. REVISIONS

Agriculture and fishing indicator statistics, like many other published statistics, are subject to revisions as new data becomes available from data sources. The statistics are subject to revision up to three years as per the NSA revision policy and therefore results for the past quarters presented in this publication could be different from those reported in the previously published bulletins.

Table 1: Production for agronomy revisions for fourth quarter 2025 in tonnes

<b>Quarter 4 2025</b>	<b>Quarter 1 2026</b>	<b>Difference</b>	<b>% change</b>
<b>Bulletin</b>	<b>Bulletin</b>		
22 643	22 648	5.0	0.0

*Note: When calculating the difference manually in the table above, there are slight differences that are due to rounding to the nearest decimal in MS Excel*

Table 2: Trade flow revisions for Horticulture products for the fourth quarter 2025 in million N\$

<b>Flow</b>	<b>Quarter 4 2025</b>	<b>Quarter 1 2026</b>	<b>Difference</b>	<b>% change</b>
	<b>Bulletin</b>	<b>Bulletin</b>		
<b>Export</b>	1 339.8	1 340.1	0.3	0.0
<b>Import</b>	327.1	326.7	-0.4	-0.1
<b>Trade balance</b>	1 012.8	1 013.4	0.7	0.1

*Note: When calculating the difference manually in the table above, there are slight differences that are due to rounding to the nearest decimal in MS Excel*

Table 3: Fish landings revisions for fourth quarter 2025 in tonnes

Quarter 4 2025 Bulletin	Quarter 1 2026 Bulletin	Difference	% change
53 392	58 588	5 196	9.7

Table 4: Trade flow revisions for 'Fish and crustaceans, molluscs and other aquatic invertebrates' for fourth quarter 2025 in million N\$

Flow	Quarter 4 2025 Bulletin	Quarter 1 2026 Bulletin	Difference	% change
Export	2 937.3	2 937.8	0.5	0.0
Import	136.9	138.7	1.9	1.4
Trade balance	2 800.4	2 799.0	-1.4	0.0

### 3. AGRONOMY INDICATORS

This section covers agronomy products i.e., Pearl millet, white maize, and wheat, that are controlled and subject to the regulations of the Namibian Agronomic Board (NAB). The total agronomy production in the first quarter of 2026 stood at 2 171 tonnes, compared to 1 637 tonnes recorded in the corresponding quarter of 2025. This translates into an increase of 32.6 percent in production level attributed largely to Wheat, which recorded a robust growth of 173.0 percent. For the period under review, Wheat recorded the highest production of 1 565 tonnes, followed by White Maize recording 597 tonnes and Pearl Millet in third place with 9 tonnes (Table 5).

Table 5: Type of Agronomy products in tonnes

Period		Wheat	White Maize	Pearl Millet	Total
2025	Q1	573	924	139	1 637
	Q2	-	35 698	66	35 765
	Q3	-	32 397	2 416	34 813
	Q4	21 058	1 061	529	22 648
2026	Q1	1 565	597	9	2 171

Source: Namibian Agronomic Board (NAB)

The total export of agronomy products in the first quarter of 2026 was valued at N\$303.0 thousand, a decline of 82.8 percent when compared to N\$1 763.0 thousand recorded in the same quarter of 2025. Export earnings were mostly from wheat, which accounted for 89.3 percent of the total export earnings (Table 6). The export of cereal grains in the first quarter of 2026 was mainly destined to Angola, accounting for 99.9 percent. Additionally, the commodity exported to this country was mainly Wheat.

Table 6: Export of Agronomy products in thousand N\$

Period		Wheat	Maize	Rice	Others	Total
<b>2025</b>	Q1	1 762.8	0.1	0.1	0.0	1 763.0
	Q2	0.6	15.3	0.0	0.0	15.9
	Q3	0.0	0.1	0.0	0.0	0.1
	Q4	0.0	175.4	0.0	0.0	175.5
<b>2026</b>	Q1	270.6	32.3	0.1	0.0	303.0

During the quarter under review, the import of cereal grains was valued at N\$467.7 million, a decline of 52.1 percent, compared to N\$976.6 million recorded in the corresponding quarter of 2025 (Table 7). During the first quarter of 2026, Maize was the highest grain imported with a value of N\$320.0 million, followed by Wheat (N\$140.0 million), Oats (N\$4.3 million), Rice (N\$1.5 million) and Sorghum (N\$1.2 million). The cereal grains imported during the quarter under review were mainly sourced from South Africa (71.4%), Lithuania (20.1%) and Poland (8.2%). Additionally, the commodities imported from South Africa was mainly Maize, while commodities imported from Lithuania and Poland were mainly Wheat.

Table 7: Import of Agronomy products in million N\$

Period		Maize	Wheat	Oats	Rice	Sorghum,	Others	Total
<b>2025</b>	Q1	659.4	293.6	6.4	5.7	0.3	11.2	976.6
	Q2	115.2	259.6	11.7	2.7	0.4	32.6	422.1
	Q3	310.6	305.8	5.6	3.5	1.0	4.4	630.8
	Q4	299.4	177.5	4.6	6.1	0.3	0.1	488.0
<b>2026</b>	Q1	320.0	140.0	4.3	1.5	1.2	0.8	467.7

## 4. HORTICULTURE INDICATORS

### 4.1 TRADE OF SELECTED HORTICULTURE PRODUCTS

In the first quarter of 2026, Namibia exported horticultural products valued at N\$668.0 million compared to N\$262.0 million that was exported in the same quarter of 2025. This translated to an increase of 155.0 percent. During the period under review, Grapes were the top exported products, amounting to N\$561.3 million, followed by Dates (N\$101.5 million), 'Pumpkins, squash and gourds' (N\$2.7 million), while 'Vegetable seeds, except beet seeds' stood at N\$2.0 million (Table 8).

Netherlands was the main export destination for horticulture during the first quarter of 2026, accounting for 39.7 percent, followed by the United Kingdom (26.8%), and Germany (7.6%). Additionally, the commodities exported to Netherlands, United Kingdom and Germany were mainly Grapes.

Table 8: Export of selected Horticulture products in million N\$

Period		Grapes	Dates	Pumpkins, squash and gourds	Vegetable seeds, except beet seeds	Other	Total
2025	Q1	188.0	68.5	0.0	0.2	5.3	262.0
	Q2	0.7	96.5	14.1	0.2	38.1	149.6
	Q3	0.4	38.8	8.7	0.0	154.5	202.3
	Q4	1248.3	22.1	1.4	0.0	68.3	1340.1
2026	Q1	561.3	101.5	2.7	2.0	0.6	668.0

During the period under review, the import bill for horticulture products was valued at N\$331.8 million, a decline of 4.1 percent, when compared to N\$346.0 million that was recorded in the corresponding quarter of 2025. Potatoes were the highest imported products amounting to N\$56.4 million followed by Apples (N\$32.0 million) and Onions (N\$16.2 million). Horticulture products were mainly sourced from South Africa, accounting for 96.4 percent during the period under review. The main commodity sourced from South Africa was 'Other stimulant, spice and aromatic crops.

Table 9: Import of selected Horticulture products in million N\$

Period		Potatoes	Apples	Onions	Tea leaves	Other	Total
<b>2025</b>	Q1	76.3	32.0	11.8	14.7	211.2	346.0
	Q2	58.8	30.1	12.4	17.0	199.1	317.4
	Q3	38.2	30.5	1.8	15.6	197.4	283.6
	Q4	53.3	31.1	1.6	13.4	227.3	326.7
<b>2026</b>	Q1	56.4	32.0	16.2	14.7	212.5	331.8

## 5. LIVESTOCK AUCTIONS

The total number of animals auctioned during the first quarter of 2026 increased by 32.1 percent to 118 175 animals from 89 428 animals auctioned in the corresponding quarter of 2025. Cattle auctions during the first quarter of 2026 registered 68 155 heads, whilst auctions for Goats and Sheep were 26 685 heads and 23 335 heads, correspondingly (Table 10).

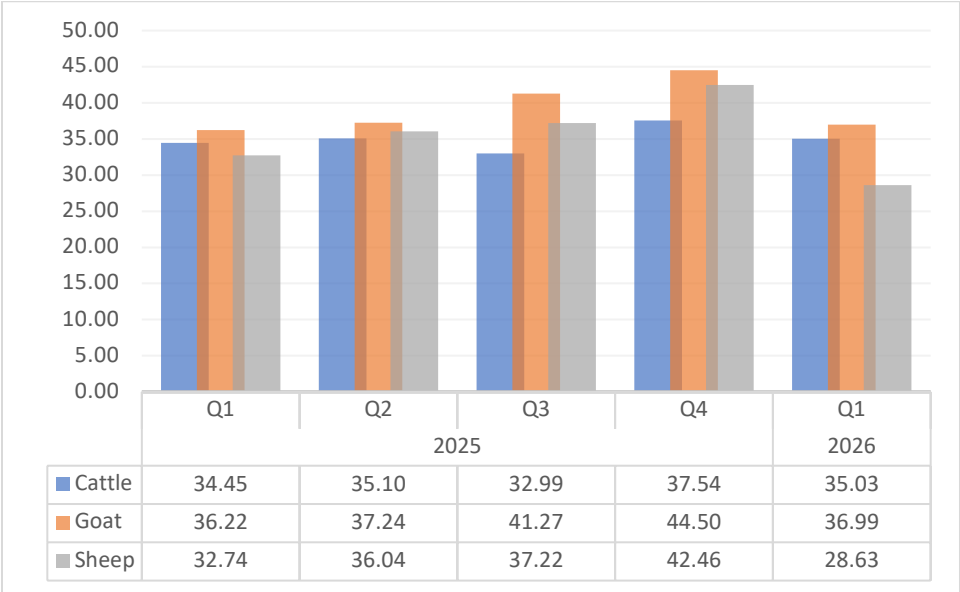
Table 10: Number of Livestock auctioned

Period		Total animal auction	Cattle	Goats	Sheep
2025	Q1	89 428	54 161	18 584	16 683
	Q2	101 513	65 209	21 922	14 382
	Q3	111 771	76 029	20 382	15 360
	Q4	114 989	59 498	33 850	21 641
2026	Q1	118 175	68 155	26 685	23 335

Source: Livestock and Livestock Products Board of Namibia

Prices for Cattle and Goat increased whilst sheep decreased during the quarter under review relative to the corresponding quarter of 2025. In terms of the average weighted price, Goats posted N\$36.99 per kg (a 2.1 percent increase), followed by Cattle that recorded N\$35.03 per kg (an increase of 1.7 percent), whereas Sheep posted N\$28.63 per kg (a decline of 12.5 percent) (Figure 2).

Figure 2: Average weighted Livestock auction prices in N\$ per kg



Source: Livestock and Livestock Products Board of Namibia

## 6. FISHING INDICATORS

The total of quota species during the first quarter of 2026 amounted to 92 853 metric tonnes, a decrease of 5.6 percent when compared to 98 389 metric tonnes recorded in the corresponding quarter of 2025. Horse Mackerel recorded the highest landings of 53 418 metric tonnes, followed by Hake in second place recording 34 985 metric tonnes and in third place was Monk that recorded 2 855 metric tonnes (Table 11).

Table 11: Landings of fish quota species by type in metric tonnes

Period	Horse Mackerel	Hake	Monk	Tuna	Crab	Cape Rock Lobster	Total
Q1	51 457	42 436	2 936	1 027	446	86	98 389
Q2	46 837	52 898	1 582	689	627	13	102 646
<b>2025</b> Q3	29 839	46 104	2 823	320	623		79 710
Q4	35 945	18 485	1 839	175	2 058	87	58 588
<b>2026</b> Q1	53 418	34 985	2 855	880	624	91	92 853

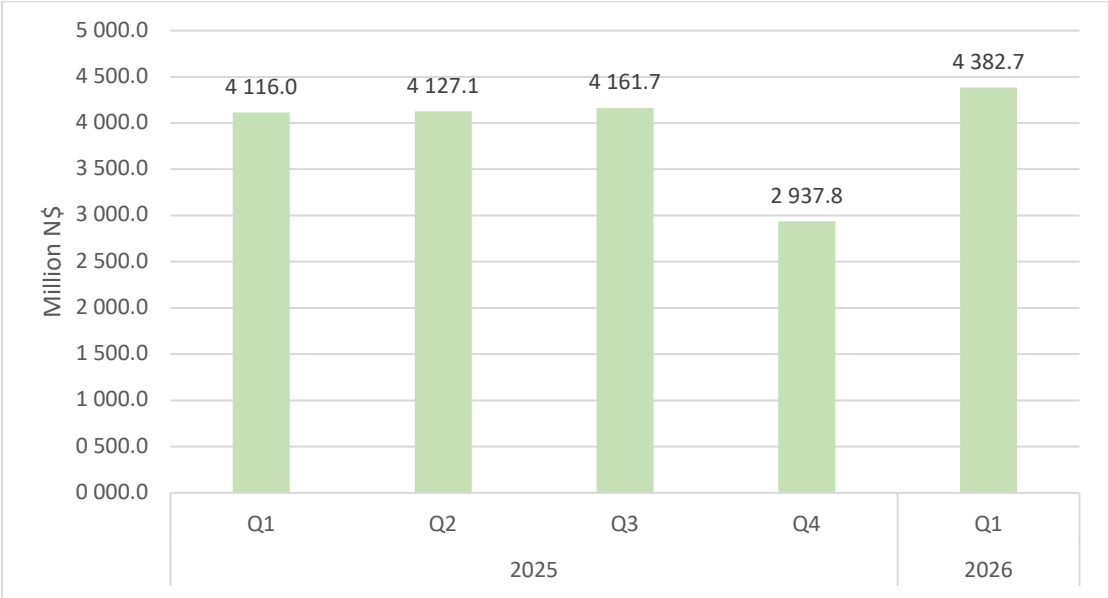
Source: Ministry of Agriculture, Fisheries, Water and Land Reform

*Note: 2026Q1 data is preliminary*

Export earnings for 'Fish and crustaceans, molluscs and other aquatic invertebrates' for the first quarter of 2026 was valued at N\$4.4 billion, an increase of 6.5 percent compared to N\$4.1 billion recorded in the corresponding quarter of 2025 (Figure 3).

The main export destination for 'Fish and crustaceans, molluscs and other aquatic invertebrates' for the quarter under review was Spain accounting for 28.8 percent of total fish exports. The main product that was exported to Spain was frozen fillets of Hake. The second and third top export destinations were Zambia (24.5%) and South Africa (8.6%). The main products exported to Zambia were 'Frozen Jack and Horse mackerel' and to South Africa was frozen fillets of Hake.

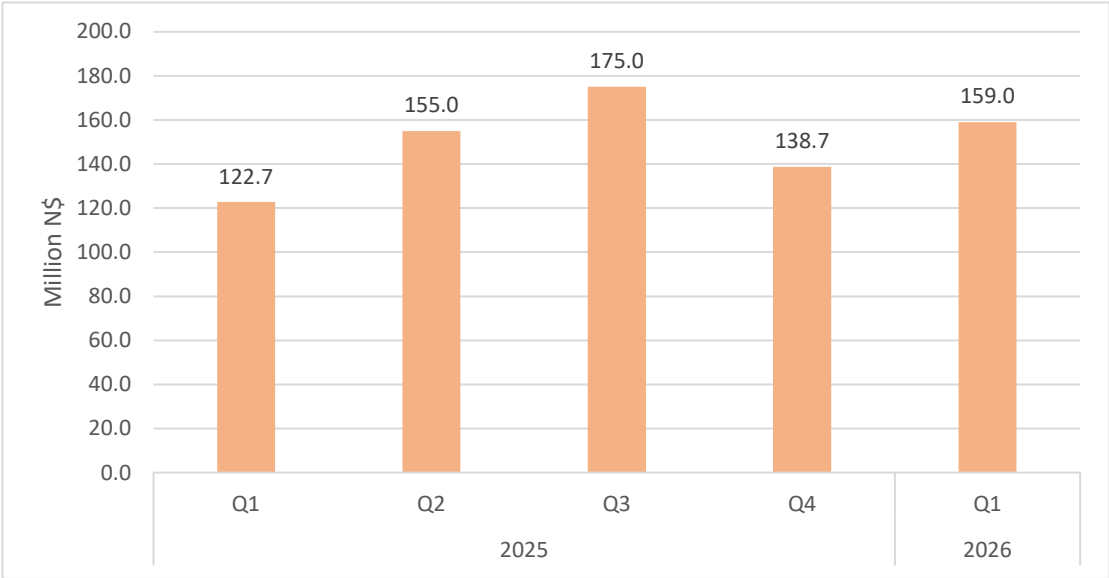
Figure 3: Export of Fish and crustaceans, molluscs and other aquatic invertebrates in Million N\$



The Import bill for ‘Fish and crustaceans, molluscs and other aquatic invertebrates’ for the quarter under review stood at N\$159.0 million, an increase of 29.6 percent when compared to N\$122.7 million recorded in the corresponding quarter of 2025 (Figure 4).

Products of ‘Fish and crustaceans, molluscs and other aquatic invertebrates’ were mainly sourced from South Africa, accounting for a share of 44.2 percent. The main product imported from South Africa was Hake. The second highest import source was Falkland Islands which accounted for a share of 12.8 percent with ‘Cuttle fish and squid’ being the main products imported. Chile stood in third place accounting for a share of 9.7 percent, the main product that was imported from this country was ‘Frozen Jack and horse mackerel’.

Figure 4: Import of Fish and crustaceans, molluscs and other aquatic invertebrates in Million N\$



## TECHNICAL NOTE

This publication uses secondary data of the Namibia Statistics Agency (NSA) and administrative data from different institutions and agencies in the compilation of the results. Monthly auction prices and number of Livestock data sourced from the Livestock and Livestock products Board of Namibia was used to generate the quarterly auction prices and total number of livestock auctioned. In addition, monthly Landing data sourced from Ministry of Agriculture, Fisheries, Water and Land Reform was used to generate quarterly Landings of Quota Species. The Namibian Agronomic Board was the source of data on production of controlled crops.

Data cleaning and processing was performed in Microsoft Excel. The validation of data was performed through consultation with industry experts supported by prevailing economic phenomena.

## CLASSIFICATION AND STANDARDS

The NSA adopts international framework for classification of trade, products, consumption and economic activities. Thus, this publication uses the Central Product Classification (CPC) and Harmonized Commodity Description and Coding System (HS) as an international framework for trade data collection, processing and dissemination. These classifications are imperative for quality and international comparisons.



Namibia Statistics Agency (NSA)  
Post Street Mall, 6958 Mutual Platz Building  
Windhoek, Namibia  
P.O.Box 2133, Windhoek, Namibia  
Tel: 061-431 3200, Fax: 061-4313253  
[www.nsa.org.na](http://www.nsa.org.na)

