

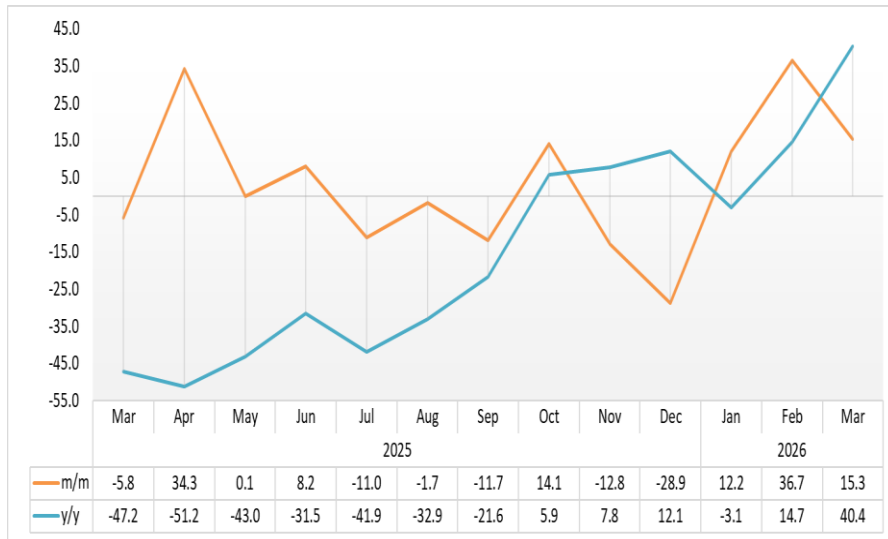


LIVESTOCK

March 2026

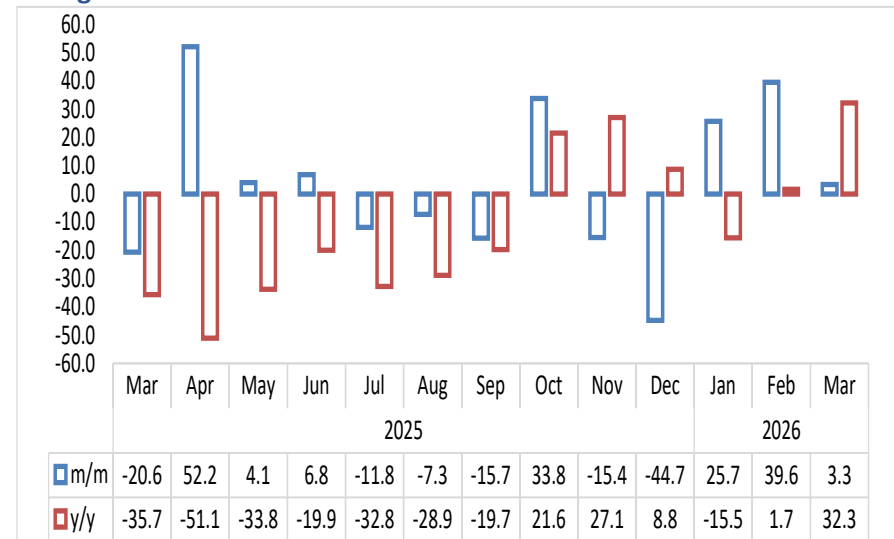


Chart 1: Livestock Marketed Composite Index, Percentage Change



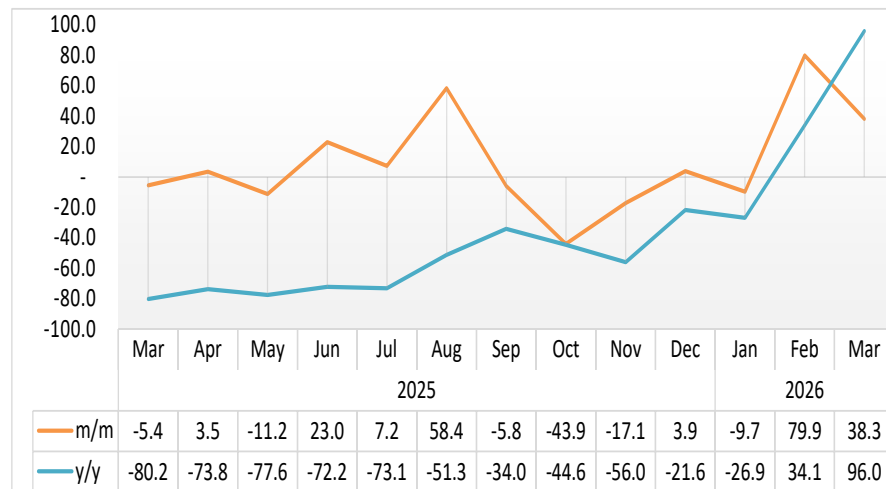
- In March 2026, the **Livestock Marketed Composite Index** recorded an increase of 15.3 percent, compared to a 36.7 percent growth observed in February 2026. On a year-on-year basis, the index expanded by 40.4 percent (Chart 1).
- In absolute terms, 127 189 animals were marketed in March 2026, a huge increase from 91 720 animals marketed in February 2026 and 88 596 animals a year prior, in March 2025.

Chart 2: Cattle Export Approved Abattoirs and Butchers Index, Percentage Change



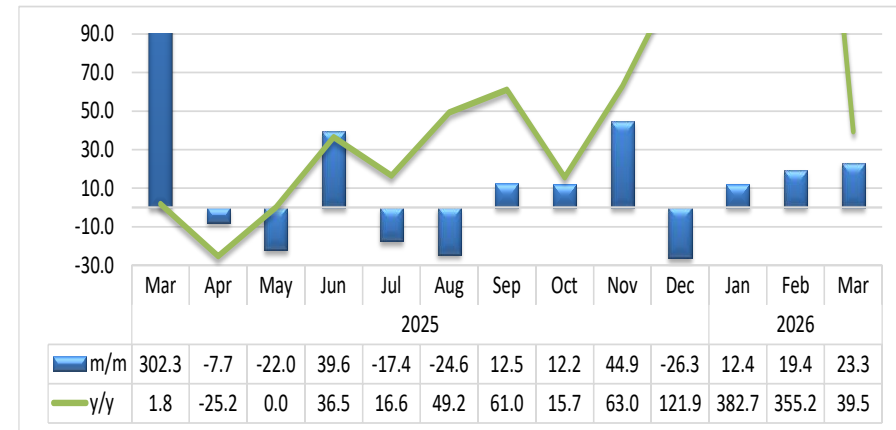
- During the review period, the **Cattle Export to Approved Abattoirs and Butchers Index** rose by 3.3 percent, following a huge 39.6 percent increase posted in the preceding month. Year-on-year, the index registered a growth of 32.3 percent (Chart 2).
- In absolute terms, 12 216 cattle were marketed to export-approved abattoirs and butchers in March 2026, up from 11 825 cattle recorded in February 2026 and considerably higher than the 9 236 cattle marketed to export-approved abattoirs and butchers in the corresponding month of 2025.

Chart 3: Live Cattle Exported on Hoof Index, Percentage Change



- In March 2026, the **Index for Live Cattle Exported on Hoof** recorded an increase of 38.3 percent, which is a huge reduction from a 79.9 percent increase recorded in February 2026. On a year-on-year basis, the index surged by 96.0 percent (Chart 3).
- During the period under review, a total of 8 361 live cattle were exported on hoof, compared to 6 047 live cattle recorded in February 2026 and 4 265 live cattle recorded the preceding year, in March 2025.

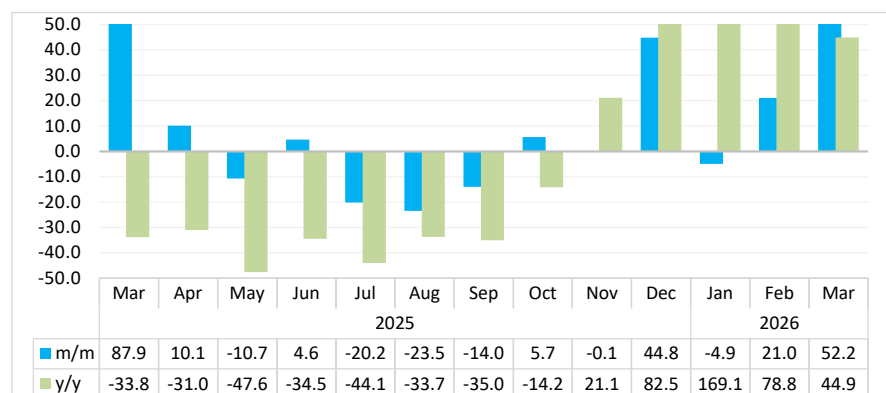
Chart 4: Small Stock Export Approved Abattoirs and Butchers Index, Percentage Change¹



- The **Small Stock Export to Approved Abattoirs and Butchers Index** recorded an increase of 23.3 percent in March 2026, following a 19.4 percent rise in February 2026. On a year-on-year basis, the index rose by 39.5 percent (Chart 4).
- In absolute terms, 17 509 small stocks were marketed to export-approved abattoirs and butchers in March 2026, all sourced from South of the Veterinary Cordon Fence (S-VCF), with none originating from North of the Veterinary Cordon Fence (N-VCF).

¹ This chart is limited to 90 percent for better presentation.

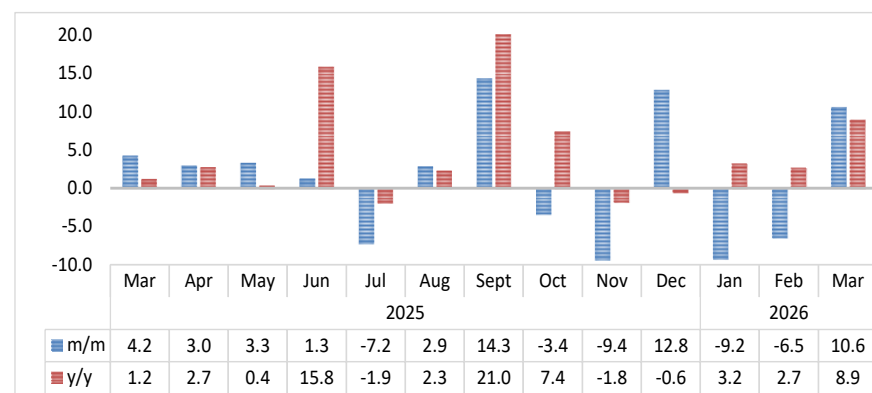
Chart 5: Live Small Stock Export, Percentage Change²



- In March 2026, the **Index for Live Small Stock Exports** grew by 52.2 percent, compared to a 21.0 percent increase recorded a month earlier. In addition, on a year-on-year basis, the index increased by 44.9 percent (Chart 5).
- During the period under review, a total of 84 583 small stock was exported live, of which 89.0 percent were sheep and 11.0 percent were goats. This was substantially higher than the 55 558 live small stock exported in February 2026 and 58 393 exported in March 2025.

² This chart is limited to 50 percent for better presentation.

Chart 6: Pigs Slaughtered Index, Percentage Change³



- In March 2026, the **Pigs Slaughtered Index** made a recovery and recorded a 10.6 percent increase after a 6.5 percent decline in the previous month. On a year-on-year basis, the index also rose by 8.9 percent (Chart 6).
- A total of 4 520 pigs were slaughtered locally in March 2026, up from 4 088 recorded in February 2026 and 4 150 pigs slaughtered in the same month of 2025.

³ This chart is limited to 20 percent for better presentation.

Table 1: Number of livestock Marketed ('000)

Year	Month	Cattle export abattoirs & butchers	Cattle live exported South Africa & Angola	Small stock Export abattoirs and butchers	Total live small stock exported South Africa and Angola	Pigs slaughtered	Total Livestock Marketed
2021	Jan	4	7	9	7	3	30
	Feb	5	8	11	21	4	49
	Mar	8	11	12	42	4	77
	Apr	8	10	14	41	4	77
	May	8	10	10	54	4	86
	Jun	9	12	11	52	4	88
	Jul	10	14	10	33	4	72
	Aug	9	15	10	25	4	63
	Sep	7	15	10	21	4	57
	Oct	8	13	5	27	4	56
	Nov	6	13	7	29	4	58
	Dec	5	10	5	39	4	62
2022	Jan	8	8	7	20	4	46
	Feb	8	10	7	32	3	61
	Mar	8	11	10	58	4	91
	Apr	12	10	29	66	4	121
	May	10	14	12	73	4	113
	Jun	12	14	16	75	4	121
	Jul	10	16	13	58	3	99
	Aug	8	10	12	34	5	70
	Sep	9	10	12	30	4	64
	Oct	9	16	12	32	4	72
	Nov	9	13	14	40	4	80
	Dec	9	8	19	43	4	83
2023	Jan	8	10	11	21	4	54
	Feb	8	8	16	40	4	75
	Mar	12	12	25	77	4	131
	Apr	12	13	20	89	4	138
	May	15	11	21	80	4	132
	Jun	20	12	19	87	4	142
	Jul	14	16	18	81	4	132
	Aug	15	22	13	65	4	119
	Sep	14	14	11	51	4	94
	Oct	9	10	14	53	4	90
	Nov	11	16	15	55	4	101
	Dec	6	7	15	47	4	78

Table 1: Number of livestock Marketed ('000) continued...

Year	Month	Cattle export abattoirs & butchers	Cattle live exported South Africa & Angola	Small stock Export abattoirs and butchers	Total live small stock exported South Africa and Angola	Pigs slaughtered	Total Livestock Marketed
2024	Jan	9	14	9	33	4	69
	Feb	9	22	11	56	4	101
	Mar	14	21	12	88	4	141
	Apr	29	17	15	93	4	158
	May	22	17	9	110	4	163
	Jun	20	17	9	92	4	142
	Jul	20	19	9	86	4	139
	Aug	18	17	5	55	4	100
	Sep	13	12	5	49	4	83
	Oct	12	8	9	39	4	71
	Nov	10	8	9	28	4	58
	Dec	6	5	5	26	5	47
2025	Jan	10	5	2	17	4	38
	Feb	12	5	3	31	4	54
	Mar	9	4	13	58	4	89
	Apr	14	4	12	64	4	99
	May	15	4	9	57	4	89
	Jun	16	5	13	60	4	98
	Jul	14	5	10	48	4	81
	Aug	13	8	8	37	4	70
	Sept	11	8	9	32	5	64
	Oct	14	4	10	33	5	67
	Nov	12	4	14	33	4	68
	Dec	7	4	11	48	5	74
2026	Jan	8	3	12	46	4	74
	Feb	12	6	14	56	4	92
	Mar	12	8	18	85	5	127

Table 2: Indices of Livestock Marketed

Year	Month	Cattle export abattoirs & butchers	Cattle Live export on hoof	Small stock Export abattoirs and butchers	Total live small stock exported South Africa and Angola	Pigs slaughtered	Composite Index
2021	Jan	43.2	32.0	20.4	14.7	105.5	36.8
	Feb	54.3	36.2	25.5	44.6	116.5	46.4
	Mar	78.6	52.1	27.3	87.5	132.6	67.2
	Apr	84.0	45.7	32.5	84.5	116.9	66.8
	May	80.7	47.9	23.6	112.9	114.9	67.9
	Jun	92.2	56.5	26.0	108.3	112.5	75.7
	Jul	105.2	65.7	23.2	69.4	120.1	81.4
	Aug	95.4	68.9	22.8	52.1	122.2	77.0
	Sep	75.3	70.2	22.0	43.5	121.1	67.9
	Oct	79.6	59.7	11.3	57.0	113.2	65.9
	Nov	59.6	61.4	15.4	60.0	119.1	58.7
	Dec	48.5	44.6	10.5	81.0	135.6	49.7
2022	Jan	78.2	38.9	15.4	40.9	115.0	56.6
	Feb	81.3	47.0	16.8	67.2	110.1	63.2
	Mar	83.8	49.9	23.7	121.4	123.6	71.0
	Apr	124.6	47.3	67.0	136.6	128.4	92.4
	May	101.2	65.1	28.3	151.4	129.7	87.3
	Jun	118.0	67.0	35.9	156.2	122.5	96.0
	Jul	96.6	73.1	30.3	120.3	102.9	84.9
	Aug	79.1	48.6	28.3	71.8	146.2	65.3
	Sep	86.0	46.0	28.4	62.0	117.8	65.5
	Oct	86.7	73.4	27.1	67.4	122.5	76.6
	Nov	94.2	60.5	32.2	82.9	139.4	77.3
	Dec	89.0	37.6	43.6	90.3	119.2	67.4
2023	Jan	76.3	46.1	25.9	44.3	120.9	59.8
	Feb	80.5	39.1	35.5	83.0	117.4	62.9
	Mar	124.9	58.4	56.6	161.1	116.1	97.6
	Apr	119.6	61.5	46.5	185.4	116.5	97.8
	May	149.5	52.4	49.1	167.5	135.0	106.5
	Jun	196.6	58.5	44.4	181.7	116.2	129.3
	Jul	143.0	73.0	41.0	168.4	120.5	110.4
	Aug	147.8	104.1	30.5	134.6	117.5	120.2
	Sep	143.8	65.2	26.3	105.6	113.8	101.0
	Oct	94.0	47.0	33.0	109.6	126.9	74.1
	Nov	106.8	74.5	34.3	115.4	123.0	90.4
	Dec	58.6	31.7	33.6	97.3	125.1	52.1

Table 2: Indices of Livestock Marketed continued...

Year	Month	Cattle export abattoirs & butchers	Cattle Live export on hoof	Small stock Export abattoirs and butchers	Total live small stock exported South Africa and Angola	Pigs slaughtered	Composite Index
2024	Jan	87.6	67.8	19.8	68.7	137.3	74.9
	Feb	89.5	101.3	25.0	116.2	122.7	92.2
	Mar	144.6	100.7	28.2	183.8	130.8	122.1
	Apr	289.1	78.8	35.5	194.1	132.6	177.6
	May	222.4	82.0	20.7	228.4	140.2	152.1
	Jun	196.4	81.4	21.1	191.1	123.1	137.0
	Jul	206.4	90.1	20.5	178.6	134.9	143.7
	Aug	180.8	78.8	12.1	115.3	133.0	122.3
	Sep	135.0	54.8	12.6	101.2	128.6	92.4
	Oct	119.4	36.6	19.6	80.9	139.8	78.0
	Nov	96.6	38.2	20.2	57.4	138.7	66.8
	Dec	62.4	22.3	10.9	55.1	154.5	45.7
2025	Jan	101.0	21.5	5.6	35.5	135.1	59.3
	Feb	117.1	21.1	7.1	64.7	126.9	68.5
	Mar	93.0	20.0	28.7	121.6	132.3	64.5
	Apr	141.5	20.7	26.5	133.9	136.3	86.6
	May	147.3	18.4	20.7	119.7	140.8	86.7
	Jun	157.3	22.6	28.9	125.2	142.6	93.8
	Jul	138.7	24.2	23.8	99.9	132.3	83.5
	Aug	128.6	38.4	18.0	76.4	136.1	82.0
	Sep	108.5	36.1	20.2	65.8	155.6	72.4
	Oct	145.1	20.3	22.7	69.5	150.2	82.6
	Nov	122.8	16.8	32.9	69.4	136.1	72.0
	Dec	67.8	17.5	24.3	100.6	153.6	51.2
2026	Jan	85.3	15.8	27.3	95.6	139.4	57.5
	Feb	119.1	28.3	32.5	115.7	130.3	78.5
	Mar	123.0	39.2	40.1	176.2	144.1	90.6

- Data Sources** : The data was obtained from the Livestock and Livestock Products Board of Namibia.
- Base year** : Livestock Sectoral report is harmonized with the quarterly and annual national accounts base year 2015.
- Sector Classification** : The ISIC CODE for this sector is 4620 for live animals and 4621 for slaughtered animals.
- Calculations of index** : The index is calculated based on the 2015 base year volumes and 2015 weights. The index is the magnitude of the volume. Changes over time, with reference to the volume of the base year 2015. The index is calculated as a ratio of the volume of a specific component in a specific month to the total volume of that component in 2015.
- Conversion** : 1 basis point = 0.01 percent