



PASSENGERS ARRIVALS & DEPARTURES FEBRUARY 2026

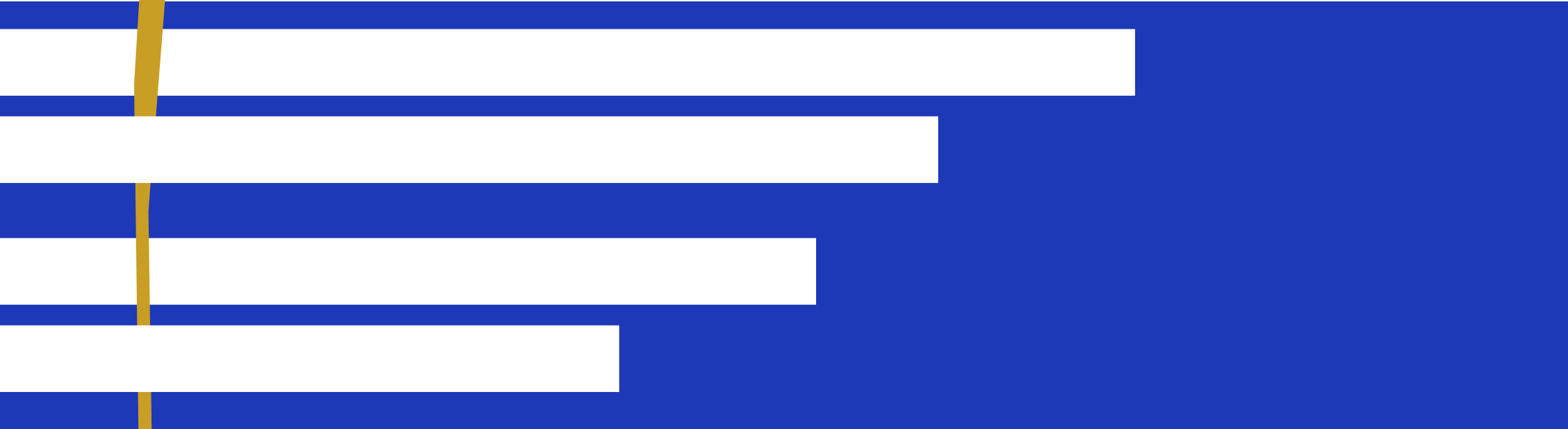
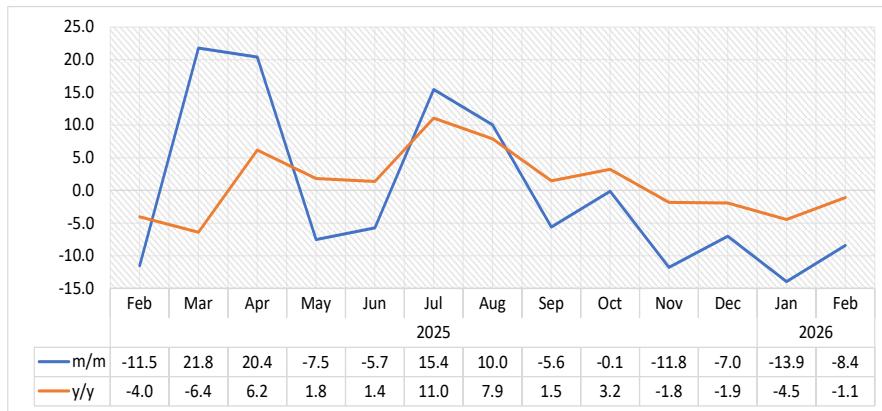
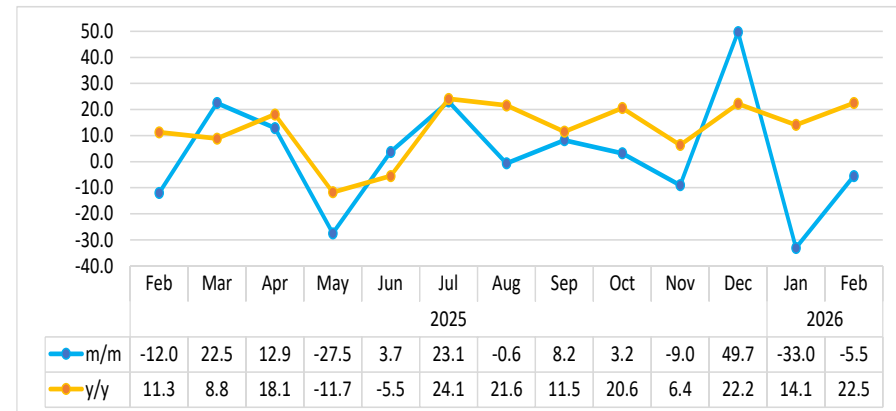


Chart 1: Passengers Movement Composite Index, Percentage Change



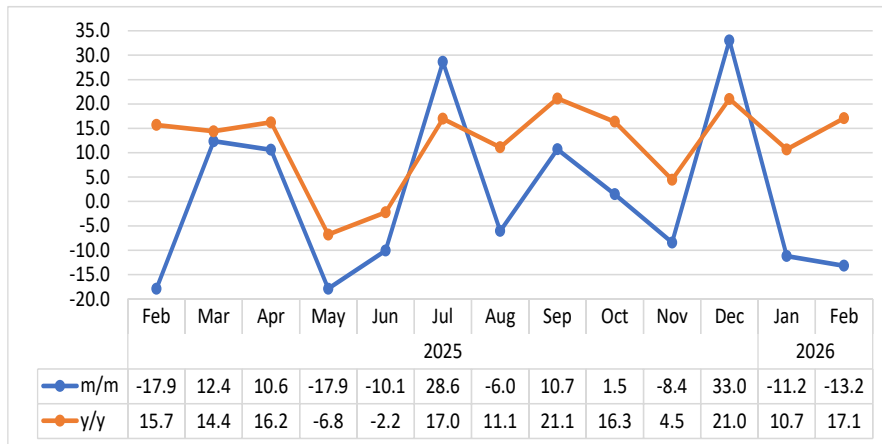
- The **Passenger Movement Composite Index**, which measures international, regional, and domestic passenger arrivals and departures across all airports, fell by 8.4 percent in February 2026, after a 13.9 percent decline in January 2026. Compared to the same month last year, the index also decreased by 1.1 percent (Chart 1).
- In absolute terms, a total of 69 129 passenger movements were recorded at airport terminals nationwide in February 2026, compared with 75 483 movements witnessed in January 2026 and 69 888 noted in February 2025.
- Hosea Kutako International Airport (HKIA) remained the main hub, accounting for 78.4 percent of total passenger movements in February 2026. Walvis Bay Airport followed with 12.7 percent, while Eros Airport contributed 5.3 percent. The remaining airports each accounted for between 2.4 and 0.06 percent of total passenger traffic.

Chart 2: Arrivals Index for Walvis Bay Airport, Percentage



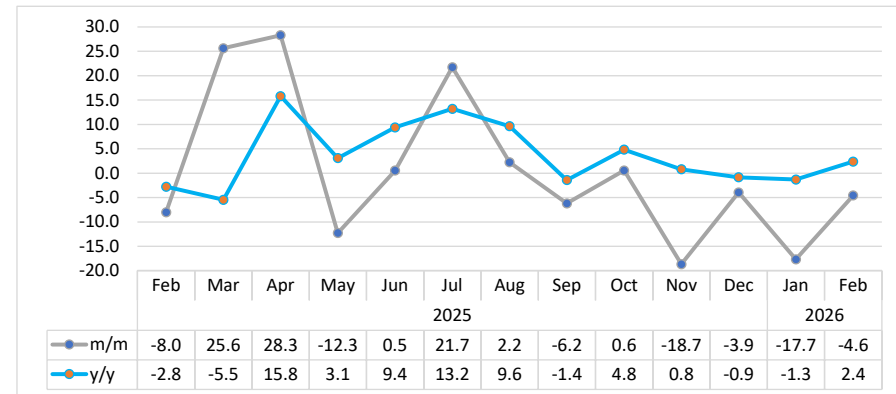
- The **Arrivals Index for Walvis Bay Airport** dropped by 5.5 percent in February 2026 compared to the previous month, following a 33.0 percent decline in January 2026. Whereas, on a year-on-year basis, the index increased by 22.5 percent (Chart 2).
- In absolute terms, 4 185 passengers arrived through Walvis Bay Airport in February 2026, slightly down from 4 429 arrivals in January 2026 but higher than 3 416 arrivals recorded in February 2025.

Chart 3: Departures Index for Walvis Bay Airport, Percentage Change



- In February 2026, the **Departures Index for Walvis Bay Airport** fell by 13.2 percent month-on-month, following a 11.2 percent decline in January 2026. On a year-on-year basis, however, the index increased by 17.1 percent (Chart 3).
- In absolute terms, 4 593 passengers departed through Walvis Bay Airport in February 2026, a decrease from 5 290 departures posted in January 2026 but an increase from 3 923 departures recorded in the corresponding month of 2025.

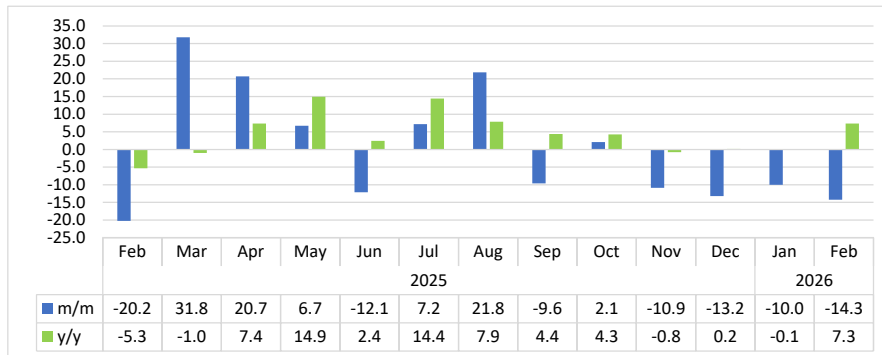
Chart 4: Arrivals Index for Hosea Kutako International Airport, Percentage Change



- The **Arrivals Index for Hosea Kutako International Airport** decreased by 4.6 percent in February 2026, following a 17.7 percent decline in January 2026. On a year-on-year basis, the index rose by 2.4 percent compared to February 2025 (Chart 4).
- In absolute terms, 27 865 passengers arrived at Hosea Kutako International Airport in February 2026, down from 29 202 in January 2026 but slightly above 27 219 arrivals recorded in the same month of 2025.

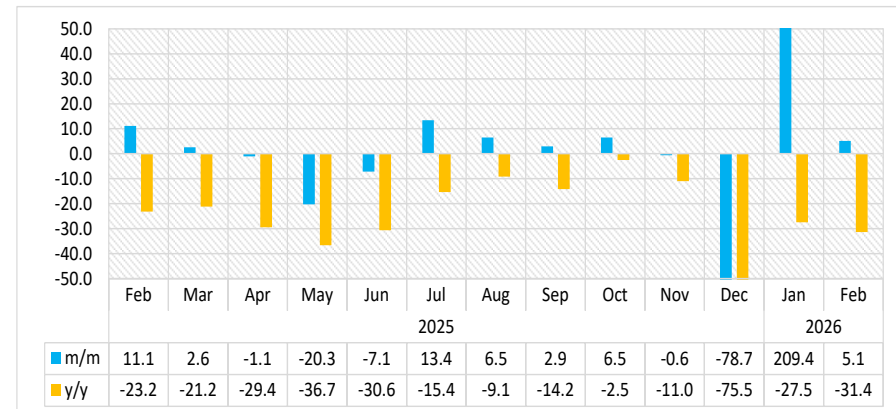
Chart 5: Departures Index for Hosea Kutako International Airport,

Percentage Change



- In February 2026, the **Departures Index for Hosea Kutako International Airport** fell by 14.3 percent, following a 10.0 percent decline recorded in January 2026. On a year-on-year basis, however, the index increased by 7.3 percent (Chart 5).
- In absolute terms, a total of 26 341 passengers departed through Hosea Kutako International Airport in February 2026, down from 30 722 passengers registered in January 2026 but slightly higher than 24 541 departures recorded in February 2025.

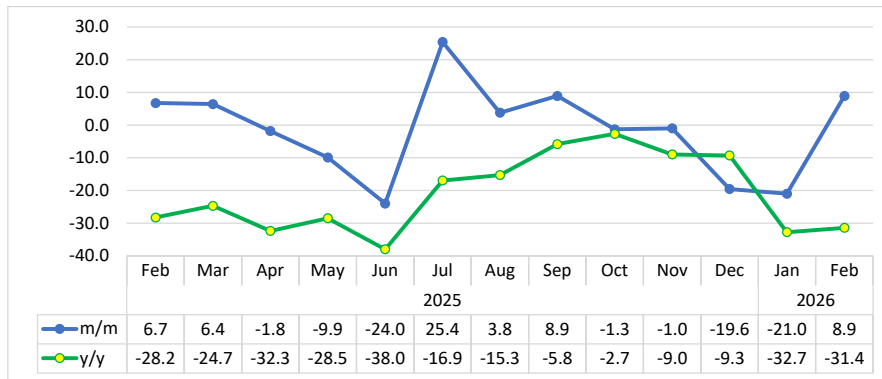
Chart 6: Arrivals Index for Eros Airport, Percentage Change¹



- The **Arrivals Index for Eros Airport** showed slower growth, increasing by 5.1 percent in February 2026, after a sharp 209.4 percent surge recorded in January 2026. However, on a year-on-year basis, the index declined by 31.4 percent (Chart 6).
- In absolute terms, 1 837 passengers arrived through Eros Airport in February 2026, up from 1 748 passengers recorded in January 2026 but below 2 678 arrivals registered in the corresponding month of 2025.

¹ This chart is limited to -50 and 50 percent for better readability.

Chart 7: Departures Index for Eros Airport, Percentage Change



- The **Departures Index for Eros Airport** rose by 8.9 percent month-on-month in February 2026, following a 21.0 percent decline in January 2026. On a year-on-year basis, however, the index declined by 31.4 percent (Chart 7).
- In absolute terms, 1 827 passengers departed through Eros Airport in February 2026, up from 1 678 in January 2026 but lower than 2 663 departures recorded in February 2025.

Table 1: The indices of regional, international and domestic arrivals and departures

Year	Month	Total Passengers	Index for (Regional, International & Domestic) Arrivals	Index for (Regional, International & Domestic) Departures
2021	Jan	28.3	26.0	30.7
	Feb	19.7	19.2	20.1
	Mar	27.0	27.5	26.5
	Apr	33.9	34.2	33.5
	May	37.5	36.8	38.3
	Jun	26.8	25.6	28.0
	Jul	21.6	22.6	20.6
	Aug	34.1	34.1	34.2
	Sep	42.4	44.8	40.0
	Oct	58.3	61.2	55.4
	Nov	58.4	61.4	55.4
	Dec	43.7	44.3	43.1
2022	Jan	55.2	41.1	69.4
	Feb	55.3	40.2	70.4
	Mar	83.5	61.8	105.5
	Apr	106.6	76.3	137.2
	May	99.5	72.1	127.3
	Jun	72.9	72.8	73.0
	Jul	94.0	101.4	86.5
	Aug	99.4	98.0	100.8
	Sep	90.4	93.0	87.8
	Oct	99.5	101.9	97.1
	Nov	88.0	83.9	92.3
	Dec	77.8	78.9	76.8
2023	Jan	68.6	66.2	70.9
	Feb	67.7	68.7	66.7
	Mar	90.4	92.5	88.3
	Apr	102.2	102.4	102.1
	May	97.1	95.3	99.0
	Jun	92.8	93.1	92.4
	Jul	113.4	119.9	106.8
	Aug	120.9	121.3	120.4
	Sep	111.6	114.4	108.8
	Oct	116.2	117.9	114.5
	Nov	109.5	106.8	112.2
	Dec	97.7	100.0	95.3

Table 1: The indices of regional, international and domestic arrivals and departures continue...

Year	Month	Total Passengers	Index for (Regional, International & Domestic) Arrivals	Index for (Regional, International & Domestic) Departures
2024	Jan	84.4	80.1	88.6
	Feb	85.3	86.6	84.0
	Mar	106.5	108.2	104.8
	Apr	113.1	113.8	112.3
	May	109.0	109.2	108.8
	Jun	103.2	102.0	104.4
	Jul	108.8	115.4	102.1
	Aug	123.2	121.0	125.4
	Sep	123.6	128.0	119.1
	Oct	121.4	121.1	121.6
	Nov	112.6	108.4	116.9
	Dec	104.8	106.6	103.0
2025	Jan	92.6	89.4	95.8
	Feb	81.9	83.9	79.8
	Mar	99.7	100.9	98.5
	Apr	120.0	124.7	115.3
	May	111.0	105.4	116.6
	Jun	104.6	106.5	102.7
	Jul	120.8	128.8	112.6
	Aug	132.9	132.3	133.4
	Sep	125.4	126.7	124.1
	Oct	125.3	125.9	124.6
	Nov	110.5	107.0	114.1
	Dec	102.8	102.9	102.7
2026	Jan	88.4	85.0	91.9
	Feb	81.0	81.7	80.3

Methodology

- Background:** The information in this report looks at both citizen and non-citizen travelers' arrivals and departures.
- Data sources:** Namibia Airports Company
- Base year:** The volumes have been referenced to 2015 data as of November 2019
- Conversion:** 1 basis point = 0.01 percent