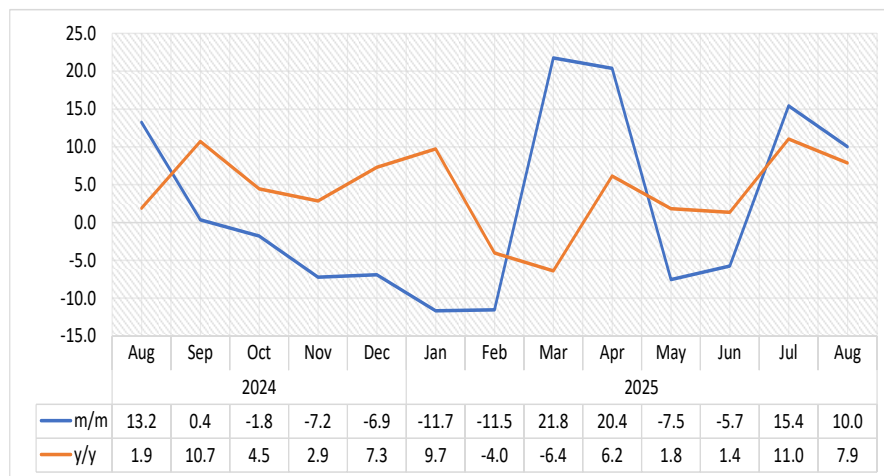




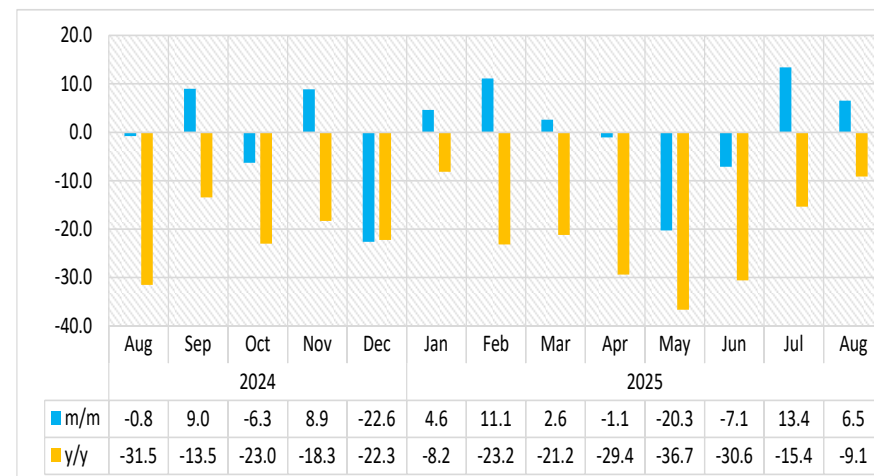
## PASSENGERS ARRIVALS & DEPARTURES AUGUST 2025

**Chart 1: Passenger Movement Composite Index, Percentage Change**



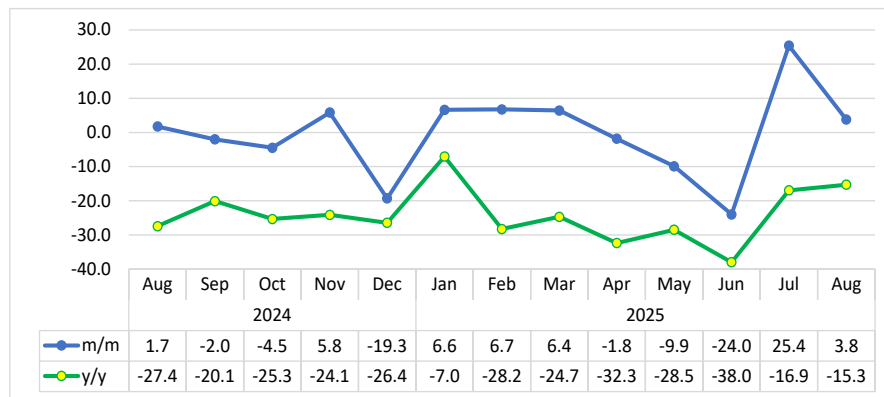
- The **Passenger Movement Composite Index**, which includes international, regional, and domestic passenger arrivals and departures across all airports, slowed down in August 2025 by registering an increase of 10.0 percent, compared to 15.4 percent growth registered in July 2025. Similarly, year-on-year, the index grew by 7.9 percent (Chart 1).
- In total, 113 399 passengers arrived and departed at airport terminals nationwide in August 2025, this is higher than 103 070 and 105 111 passengers recorded in July 2025 and August 2024, respectively.
- Hosea Kutako International Airport remained the main hub, handling 84.6 percent of total passenger traffic in August 2025, followed by Walvis Bay Airport with 7.7 percent, and Eros Airport with a share of 4.3 percent. Other airports each accounted for between 0.03 and 2.2 percent of passenger traffic.

**Chart 2: Arrivals Index for Eros Airport, Percentage Change**



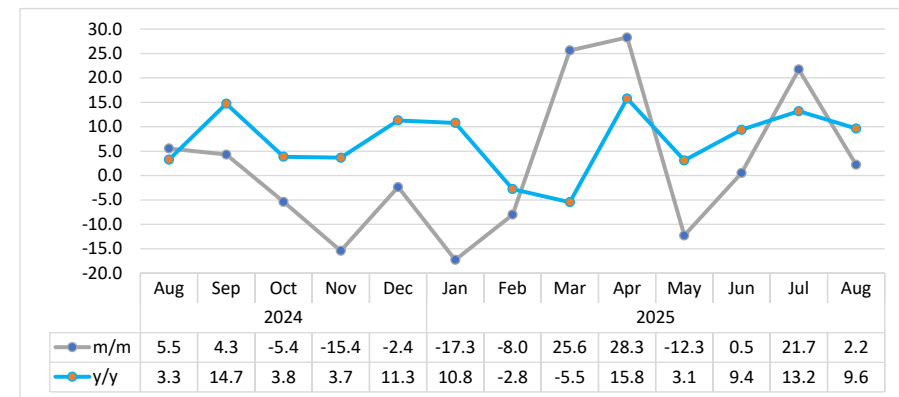
- The **Arrivals Index at Eros Airport** rose by 6.5 percent month-on-month in August 2025, following a 13.4 percent increase recorded in July 2025. However, on a year-on-year basis, the index declined by 9.1 percent (Chart 2).

Chart 3: Departures Index for Eros Airport, Percentage Change



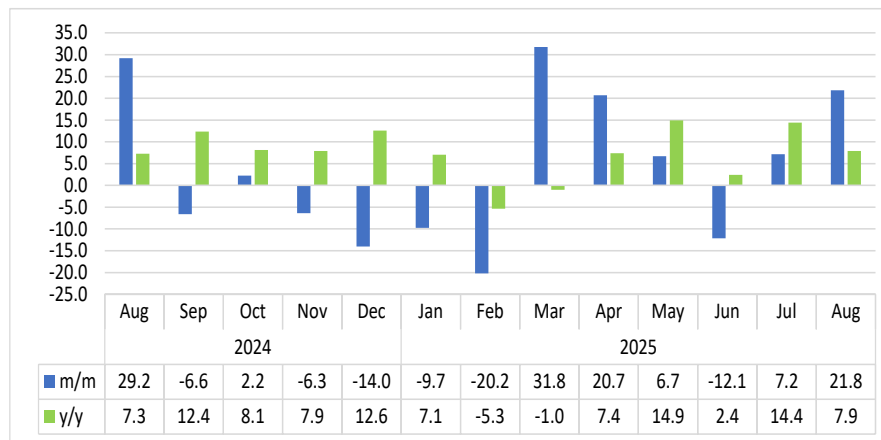
- In August 2025, the **Departures Index for Eros Airport** increased by 3.8 percent on a monthly basis, compared to 25.4 percent rise in July 2025. However, year-on-year, the index, declined by 15.3 percent (Chart 3).

Chart 4: Arrivals Index for Hosea Kutako Airport, Percentage Change



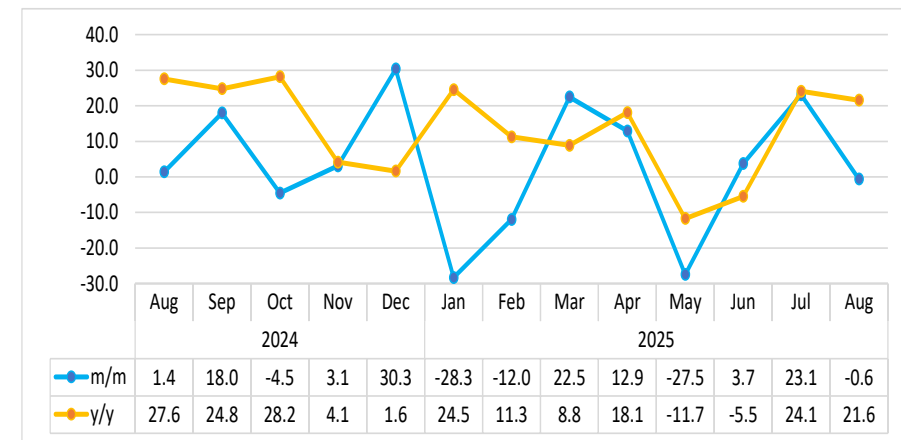
- The **Arrivals Index for Hosea Kutako International Airport** increased by 2.2 percent month-on-month in August 2025, marking a slowdown when compared to 21.7 percent growth recorded in July 2025. Similarly, the index rose by 9.6 percent when compared to August 2024 (Chart 4).

Chart 5: Departures Index for Hosea Kutako Airport, Percentage Change



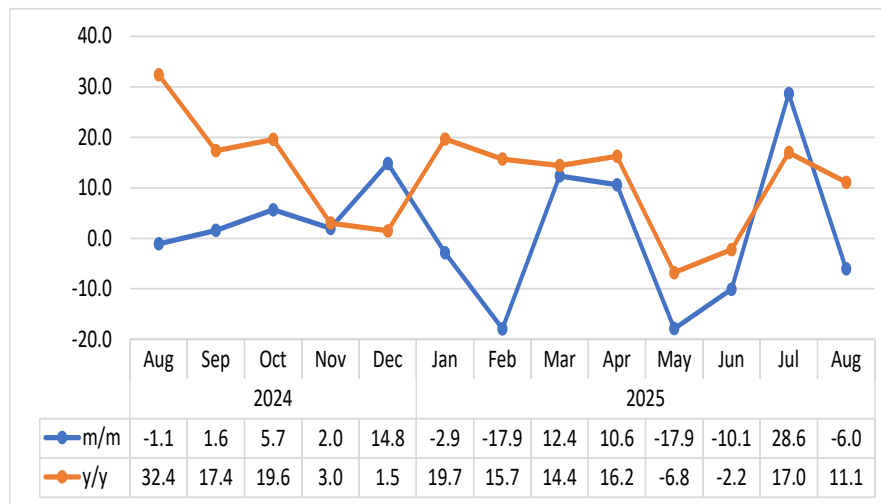
- In August 2025, the **Departures Index for Hosea Kutako International Airport** increased by 21.8 percent month-on-month, up from 7.2 percent rise recorded in July 2025. On a year-on-year basis, the index grew by 7.9 percent (Chart 5).

Chart 6: Arrivals Index for Walvis Bay Airport, Percentage Change



- The **Arrivals Index for Walvis Bay Airport** decreased by 0.6 percent month-on-month in August 2025, following a 23.1 percent increase in July 2025. On a yearly basis, however, the index rose by 21.6 percent (Chart 6).

**Chart 7: Departures Index for Walvis Bay Airport, Percentage Change**



- In August 2025, the **Departures Index for Walvis Bay Airport** fell by 6.0 percent, in contrast to a growth of 28.6 percent experienced in July 2025. However, on a year-on-year basis, the index increased by 11.1 percent (Chart 7).

**Table 1: The indices of regional, international and domestic arrivals and departures**

Year	Month	Total Passengers	Index for (Regional, International & Domestic) Arrivals	Index for (Regional, International & Domestic) Departures
2021	Jan	28.3	26.0	30.7
	Feb	19.7	19.2	20.1
	Mar	27.0	27.5	26.5
	Apr	33.9	34.2	33.5
	May	37.5	36.8	38.3
	Jun	26.8	25.6	28.0
	Jul	21.6	22.6	20.6
	Aug	34.1	34.1	34.2
	Sep	42.4	44.8	40.0
	Oct	58.3	61.2	55.4
	Nov	58.4	61.4	55.4
	Dec	43.7	44.3	43.1
2022	Jan	55.2	41.1	69.4
	Feb	55.3	40.2	70.4
	Mar	83.5	61.8	105.5
	Apr	106.6	76.3	137.2
	May	99.5	72.1	127.3
	Jun	72.9	72.8	73.0
	Jul	94.0	101.4	86.5
	Aug	99.4	98.0	100.8
	Sep	90.4	93.0	87.8
	Oct	99.5	101.9	97.1
	Nov	88.0	83.9	92.3
	Dec	77.8	78.9	76.8
2023	Jan	68.6	66.2	70.9
	Feb	67.7	68.7	66.7
	Mar	90.4	92.5	88.3
	Apr	102.2	102.4	102.1
	May	97.1	95.3	99.0
	Jun	92.8	93.1	92.4
	Jul	113.4	119.9	106.8
	Aug	120.9	121.3	120.4
	Sep	111.6	114.4	108.8
	Oct	116.2	117.9	114.5
	Nov	109.5	106.8	112.2
	Dec	97.7	100.0	95.3

**Table 1: The indices of regional, international and domestic arrivals and departures continue...**

Year	Month	Total Passengers	Index for (Regional, International & Domestic) Arrivals	Index for (Regional, International & Domestic) Departures
2024	Jan	84.4	80.1	88.6
	Feb	85.3	86.6	84.0
	Mar	106.5	108.2	104.8
	Apr	113.1	113.8	112.3
	May	109.0	109.2	108.8
	Jun	103.2	102.0	104.4
	Jul	108.8	115.4	102.1
	Aug	123.2	121.0	125.4
	Sep	123.6	128.0	119.1
	Oct	121.4	121.1	121.6
	Nov	112.6	108.4	116.9
	Dec	104.8	106.6	103.0
2025	Jan	92.6	89.4	95.8
	Feb	81.9	83.9	79.8
	Mar	99.7	100.9	98.5
	Apr	120.0	124.7	115.3
	May	111.0	105.4	116.6
	Jun	104.6	106.5	102.7
	Jul	120.8	128.8	112.6
	Aug	132.9	132.3	133.4

### ***Methodology***

<b>Background:</b>	The information in this report looks at both citizen and non-citizen traveller's arrivals and departures.
<b>Data sources:</b>	Namibia Airports Company
<b>Base year:</b>	The volumes have been referenced to 2015 data as of November 2019
<b>Conversion:</b>	1 basis point = 0.01 percent