

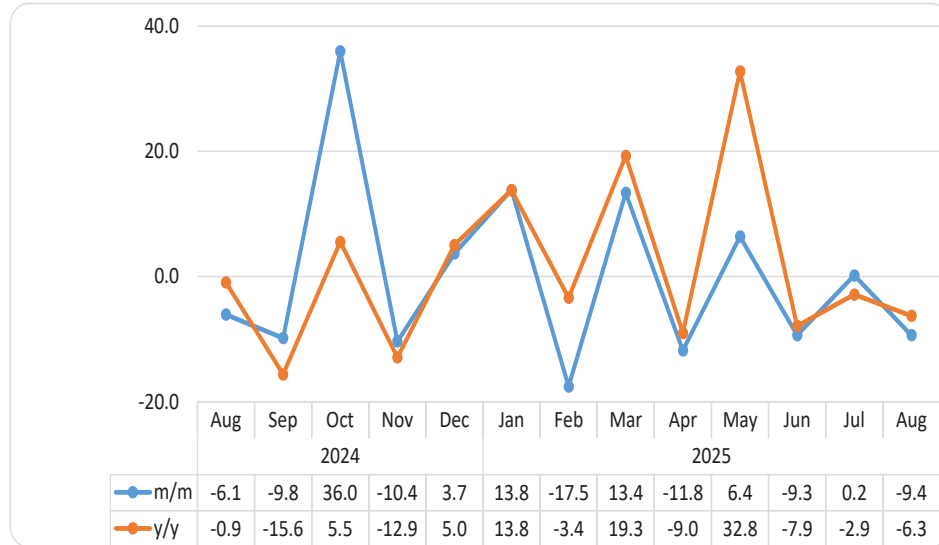


# MINING

AUGUST 2025



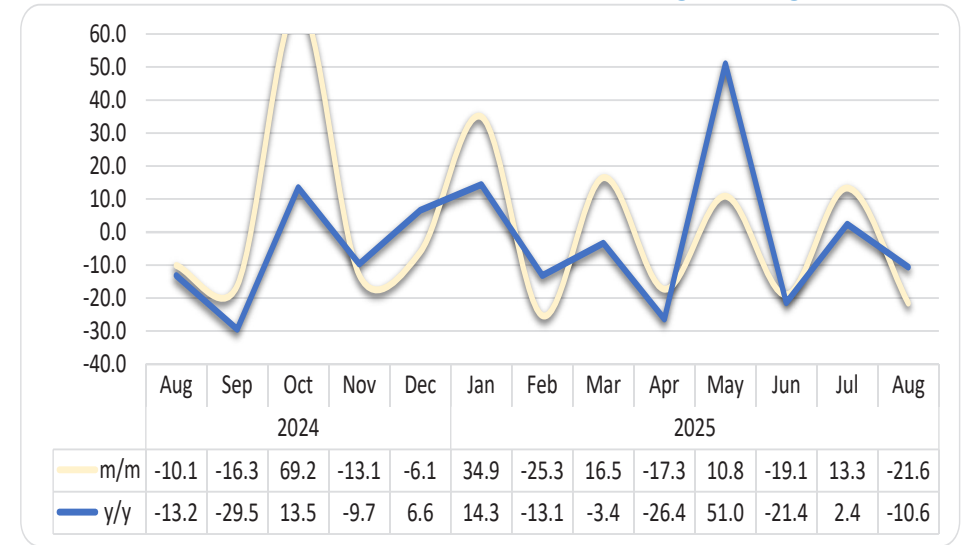
Chart 1: Mining Composite Production Index, Percentage Change



- In August 2025, the **Mining Production Composite Index** which includes Diamonds, Zinc Concentrate & Contained, Gold Bullion and Uranium declined by 9.4 percent, compared to a 0.2 percent increase recorded in the preceding month. On an annual basis, the index contracted by 6.3 percent (Chart 1).
- The monthly decline was primarily driven by lower production levels of Diamonds and Zinc Concentrate & Contained, while the production of Gold Bullion and Uranium increased during the period under review.

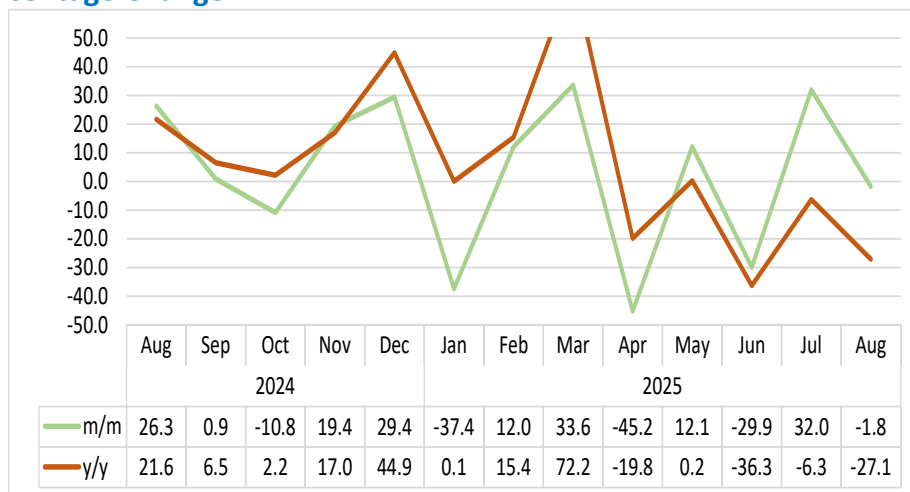
<sup>1</sup> This chart is limited to 60 percent for better readability.

Chart 2: Diamonds Production Index, Percentage Change<sup>1</sup>



- The **Diamonds Production Index** declined by 21.6 percent in August 2025, compared to 13.3 percent increase recorded in the previous month. On a year-on-year basis, the index also dropped by 10.6 percent (Chart 2).

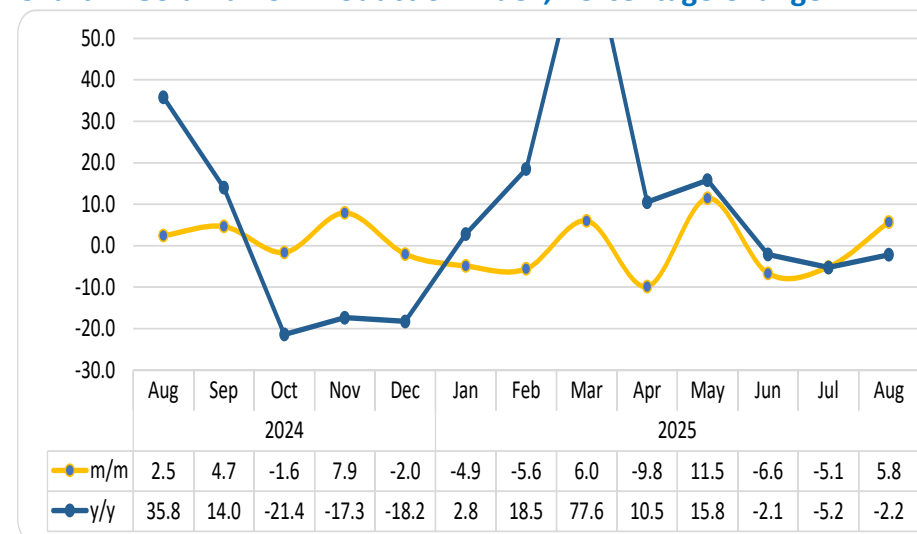
Chart 3: 'Zinc Concentrate & Contained' Production Index, Percentage Change<sup>2</sup>



- In August 2025, the **Zinc Concentrate & Contained Production Index** declined by 1.8 percent, following a 32.0 percent growth observed in the preceding month. On a year-on-year basis, the index dropped by 27.1 percent (Chart 3).

<sup>2</sup> This chart is limited to 50 percent for better readability.

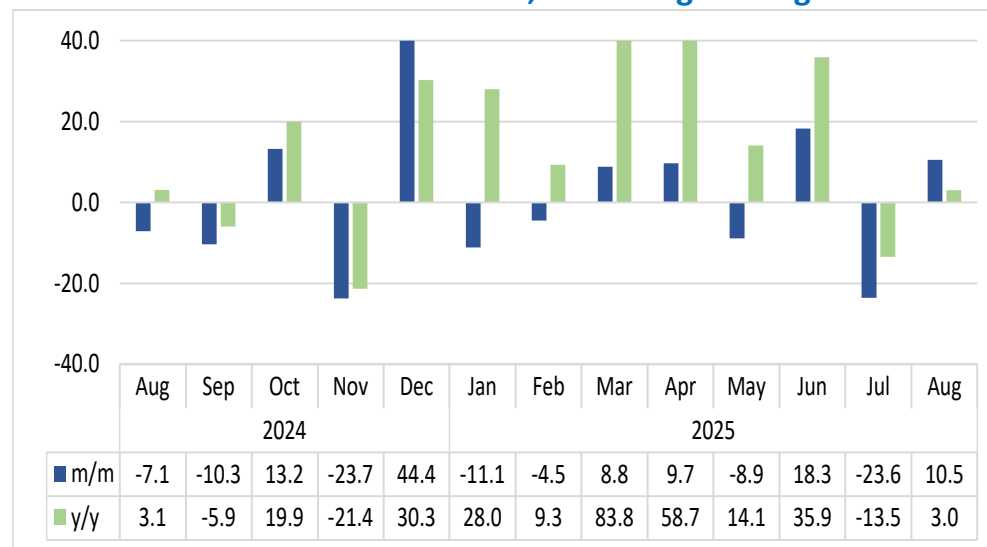
Chart 4: Gold Bullion Production Index, Percentage Change<sup>3</sup>



- The **Gold Bullion Production Index** rose by 5.8 percent in August 2025, compared to a decline of 5.1 percent recorded in July 2025. On a yearly basis, the index decreased by 2.2 percent (Chart 4).

<sup>3</sup> This chart is limited to 50 percent for better readability.

Chart 5: Uranium Production Index, Percentage Change<sup>4</sup>



- In August 2025, the **Uranium Production Index** grew by 10.5 percent month-on-month, following a 23.6 percent decline observed in the previous month. On a year-on-year basis, the index increased by 3.0 percent (Chart 5).

<sup>4</sup> This chart is limited to 40 percent for better readability.

Table 1: Mining Composite Index of the Selected Minerals

Year	Month	Diamonds	Uranium	Zinc concentrate & contained	Gold Bullion	Composite Index
2021	Jan	90.2	173.3	72.2	70.5	94.8
	Feb	76.2	194.7	60.0	63.5	86.2
	Mar	64.6	162.3	69.2	66.5	75.8
	Apr	70.2	120.2	70.5	76.0	76.4
	May	79.9	198.6	90.9	67.8	91.3
	Jun	80.2	150.7	87.3	69.8	86.2
	Jul	91.5	163.2	83.5	119.7	103.5
	Aug	85.9	169.6	93.6	163.0	108.6
	Sep	93.6	210.4	91.7	164.5	118.5
	Oct	95.1	182.1	102.1	182.6	119.9
	Nov	100.2	195.9	91.4	164.9	121.2
	Dec	69.8	215.9	90.5	166.5	103.7
2022	Jan	101.0	83.6	73.1	110.8	98.7
	Feb	90.1	197.2	75.7	81.6	99.5
	Mar	117.4	205.9	82.5	98.1	121.6
	Apr	114.0	136.9	73.6	83.6	108.6
	May	120.4	160.9	70.7	108.0	119.6
	Jun	148.7	168.6	82.3	84.1	135.5
	Jul	129.4	220.6	77.8	85.8	128.8
	Aug	121.8	205.3	69.5	97.2	123.6
	Sep	111.2	195.2	94.5	120.8	120.9
	Oct	119.0	146.1	99.2	134.8	123.1
	Nov	149.2	180.1	88.4	136.0	146.5
	Dec	131.9	184.0	94.7	209.8	148.7
2023	Jan	140.0	182.3	83.8	142.2	141.6
	Feb	126.3	204.6	75.8	123.9	131.5
	Mar	161.2	189.6	90.8	97.8	148.9
	Apr	121.3	217.3	57.4	133.0	130.4
	May	138.2	192.8	69.2	120.1	137.0
	Jun	158.2	209.4	73.1	139.3	155.5
	Jul	116.4	234.4	65.3	142.7	131.1
	Aug	120.5	245.0	69.3	122.0	131.6
	Sep	124.2	240.7	79.9	152.1	139.3
	Oct	130.6	213.7	74.3	217.1	151.5
	Nov	142.7	248.7	77.4	222.9	164.6
	Dec	113.5	216.7	80.9	220.8	141.5

Table 1: Mining Composite Index of the Selected Minerals continued...

Year	Month	Diamonds	Uranium	Zinc concentrate & contained	Gold Bullion	Composite Index
2024	Jan	142.8	196.0	73.4	167.1	148.7
	Feb	140.3	219.3	71.3	136.9	144.4
	Mar	146.9	141.8	63.9	96.9	132.6
	Apr	159.4	180.2	75.2	140.4	153.3
	May	86.2	228.3	67.5	149.4	111.8
	Jun	134.0	226.8	74.4	164.9	146.1
	Jul	116.5	271.9	66.8	161.7	138.8
	Aug	104.6	252.6	84.4	165.7	130.4
	Sep	87.6	226.4	85.1	173.4	117.6
	Oct	148.2	256.3	75.9	170.7	159.9
	Nov	128.9	195.5	90.6	184.2	143.3
	Dec	121.0	282.3	117.3	180.5	148.7
2025	Jan	163.2	250.9	73.5	171.8	169.2
	Feb	121.9	239.6	82.3	162.2	139.5
	Mar	142.0	260.7	110.0	172.0	158.2
	Apr	117.4	285.9	60.3	155.1	139.5
	May	130.1	260.5	67.6	173.0	148.5
	Jun	105.3	308.1	47.4	161.5	134.6
	Jul	119.3	235.3	62.6	153.3	134.8
	Aug	93.6	260.1	61.5	162.1	122.2

## Definitions

- **Diamond:** Is a very hard mineral that is in the form of bars of carbon and is used, especially in Jewellery.
- **Gold Bullion:** Is a gold or silver in bulk before coining or valued by weight which means gold bullion is gold valued purify and weights.
- **Zinc:** Is a metallic element with a blue-white colour, used as a protective covering for iron and to make metal alloys like nickel silver.
- **Uranium:** Is a Silver-heavy radioactive polyvalent metallic element that is found especially in uraninite and exists naturally as a mixture of mostly no fissionable elements.

## Methodology Notes and Data Sources

**Data Sources** : Data sourced from Bank of Namibia for the period starting from January 2019.

**Base year** : The Mining sectoral report is harmonised with the quarterly and annual National Accounts base year 2015.

**Index calculations** : The index of mining production was weighted using the value-added data of 2015. The index is then calculated as a ratio of the volume of a specific component in a specific month to the total volume of that component in 2015.

**Conversion** : 1 basis point = 0.01 percent