

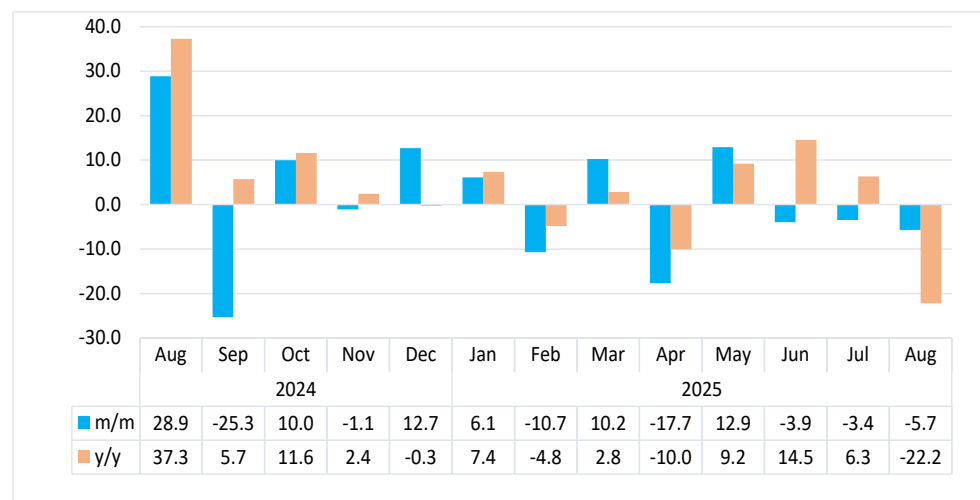


# ELECTRICITY

AUGUST 2025

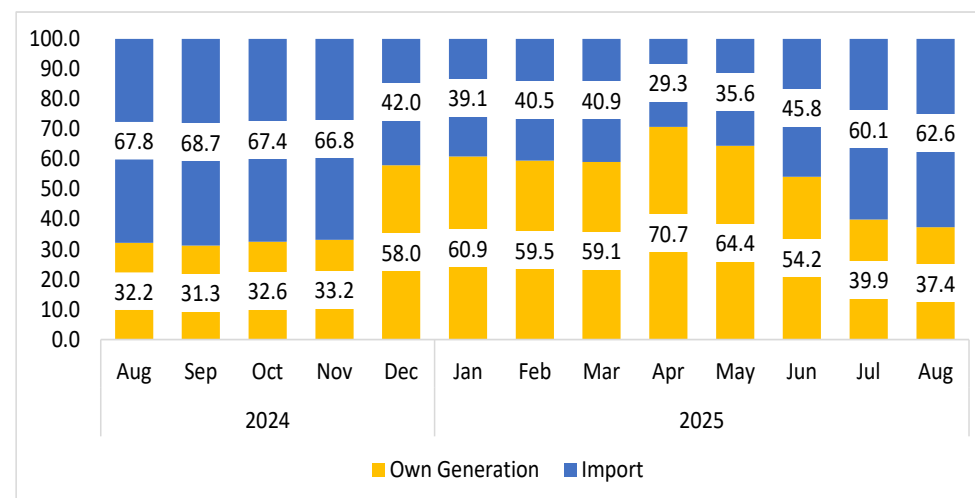


**Chart 1: Electricity Sources Composite Index, Percentage Change**



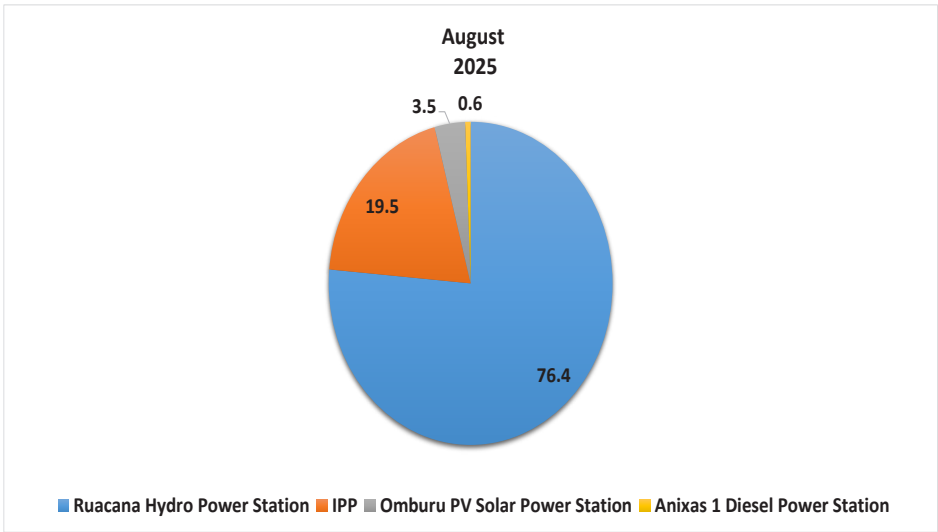
- The **Electricity Sources Composite Index**, which reflects both own generation (local production) and imports, fell by 5.7 percent in August 2025, following a 3.4 percent decline in July 2025. On an annual basis, the index contracted by 22.2 percent (Chart 1).
- During the same period, electricity supplied to the domestic economy stood at 379 696 MWh, down from 402 682 MWh in July 2025 and 488 072 MWh recorded in August 2024.

**Chart 2: Share of Sources of Electricity, in Percent**



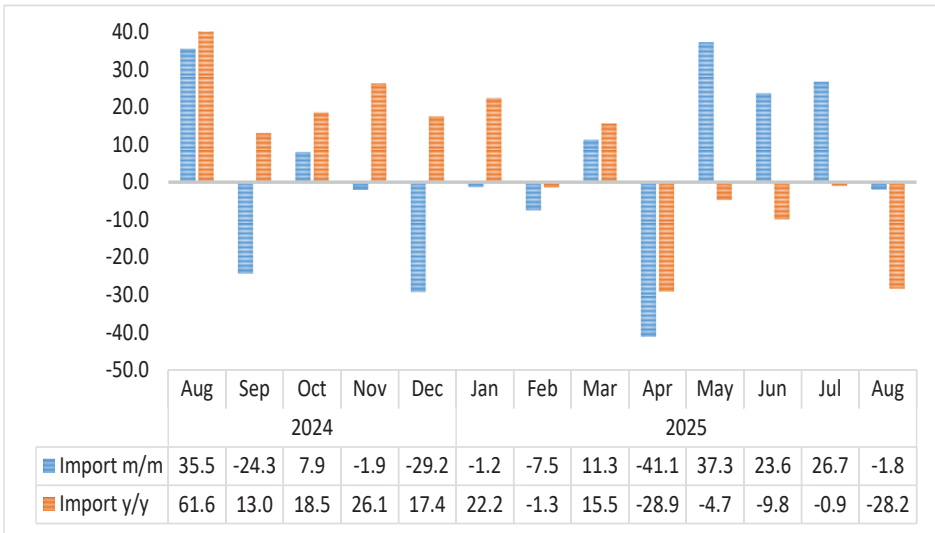
- In August 2025, own generation contributed 37.4 percent (141 962 MWh) of the total electricity supplied to the domestic economy, while imports made up the remaining 62.6 percent (237 734 MWh). This trend mirrors August 2024, when imports similarly accounted for the dominant share of electricity supply.

Chart 3: Share of Electricity for Own Generation, in Percent



- In August 2025, total domestic electricity generation stood at 141 962 MWh. The Ruacana Hydro Power Station was the leading source, contributing 76.4 percent (108 427 MWh), followed by Independent Power Producers (IPPs) with 19.5 percent (27 730 MWh). The Omburu PV Solar Power Station accounted for 3.5 percent (4 932 MWh) of the total local output generated.
- The Anixas 1 Diesel Power Station ranked fourth, contributing 0.6 percent (873 MWh) of the overall local generation (Chart 3).

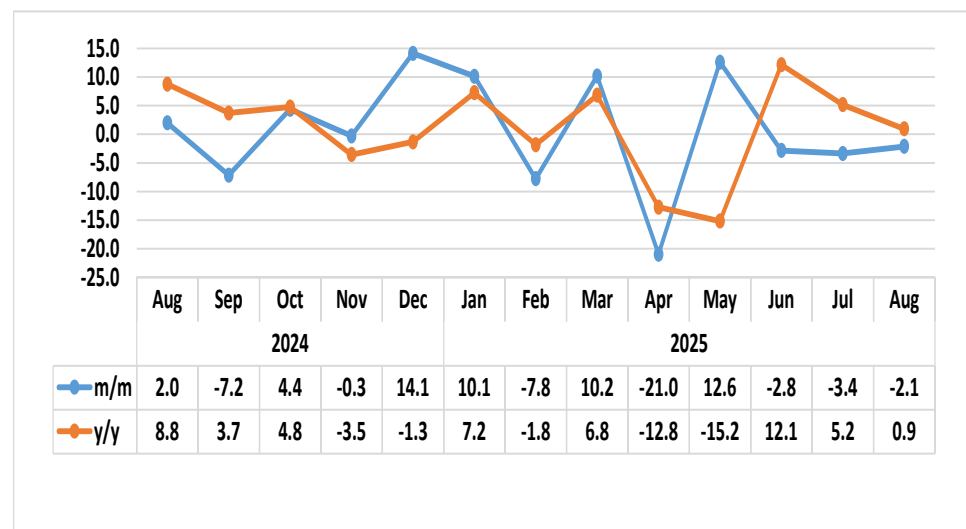
Chart 4: Electricity Import Index, Percentage Change<sup>1</sup>



- The **Electricity Import Index** fell by 1.8 percent month-on-month in August 2025, in contrast to a strong growth of 26.7 percent recorded in the previous month. On an annual basis, the index dropped by 28.2 percent (Chart 4).
- South Africa remained the leading source of electricity imports, accounting for 38.0 percent of the total import electricity, followed closely by Zambia with 37.4 percent. Zimbabwe contributed 16.7 percent, while Eskom Orange River and the Day-Ahead Market (SAPP) supplied 4.7 and 3.2 percent, respectively.

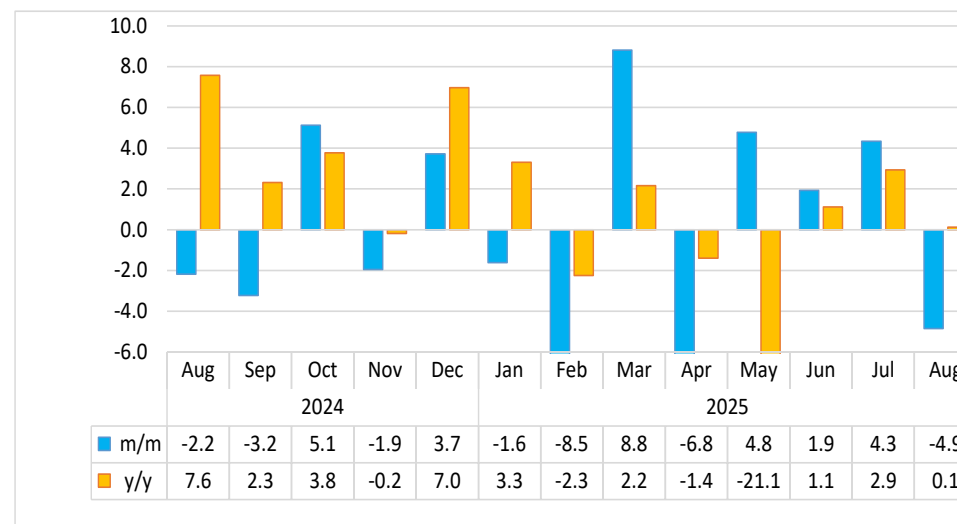
<sup>1</sup> This chart is limited to 40 percent for better readability.

Chart 5: Electricity Sales Composite Index, Percentage Change



- The **Electricity Sales Composite Index** decreased by 2.1 percent month-on-month in August 2025, following a 3.4 percent decline in the previous month. On a year-on-year basis, however, the index rose by 0.9 percent (Chart 5).
- In terms of volume, total electricity sales reached 348 831 MWh in August 2025, down from 356 431 MWh in July 2025, but higher than the 345 598 MWh recorded in August 2024.

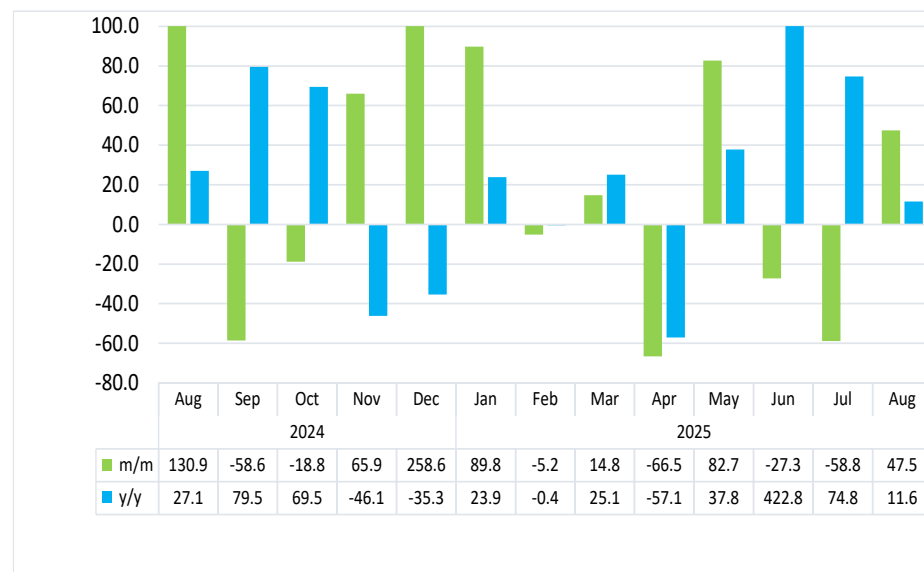
Chart 6: Electricity Domestic Sales Index, Percentage Change<sup>2</sup>



- The **Domestic Electricity Sales Index** fell by 4.9 percent month-on-month in August 2025, reversing the 4.3 percent increase recorded in July 2025. On a year-on-year basis, the index inched up by 0.1 percent (Chart 6).
- The bulk of domestic electricity sales was directed to Redistributors – LPU, which accounted for 68.9 percent, followed by the Mining sector with 23.6 percent, and Eskom Orange River with 3.5 percent.
- Domestic electricity sales to Farms – Main Supply and Plots, Miscellaneous ranked fourth and fifth, contributing 1.3 and 0.8 percent, respectively.

<sup>2</sup> This chart is limited to -6 percent for better readability.

Chart 7: Electricity Export Sales Index, Percentage Change<sup>3</sup>



- The **Electricity Export Sales Index** rose by 47.5 percent in August 2025, following a 58.8 percent decline in July 2025. On a year-on-year basis, the index increased by 11.6 percent (Chart 7).
- During the review period, Namibia exported a total of 27 336 MWh of electricity. The bulk of these exports, 91.9 percent, went to STEM Sales – SAPP. Botswana was the second-largest recipient with 4.5 percent, followed by South Africa and Angola, which received 1.9 and 1.7 percent, respectively.

<sup>3</sup> This chart is limited to 100 percent for better readability.

Table 1: Electricity Sources in MWH

Year	Month	Own generated	Import
2020	Jan	249,327	171,655
	Feb	260,165	171,759
	Mar	268,742	252,506
	Apr	270,785	136,187
	May	234,883	176,429
	Jun	145,495	226,701
	Jul	156,692	227,982
	Aug	176,845	209,579
	Sep	155,062	213,956
	Oct	139,242	248,759
	Nov	110,168	255,038
	Dec	140,822	243,109
2021	Jan	98,191	255,534
	Feb	66,648	238,395
	Mar	65,547	252,906
	Apr	95,326	250,225
	May	95,027	251,119
	Jun	64,155	265,577
	Jul	48,192	297,297
	Aug	43,152	301,495
	Sep	50,664	290,922
	Oct	61,058	290,893
	Nov	76,294	270,322
	Dec	89,054	263,899
2022	Jan	93,044	252,026
	Feb	65,362	255,286
	Mar	139,261	221,067
	Apr	265,053	117,300
	May	152,261	204,296
	Jun	98,405	247,188
	Jul	100,515	253,554
	Aug	101,360	252,948
	Sep	87,212	259,414
	Oct	81,558	278,245
	Nov	89,789	260,750
	Dec	134,559	216,217

Table 1: Electricity Sources in MWH continue...

Year	Month	Own generated	Import
2023	Jan	174 396	195 004
	Feb	208 340	147 774
	Mar	116 256	250 059
	Apr	232 039	172 956
	May	266 144	146 833
	Jun	191 672	179 945
	Jul	160 051	216 521
	Aug	150 729	204 813
	Sept	123 030	221 823
	Oct	131 052	228 332
	Nov	177 168	210 293
	Dec	288 544	160 000
2024	Jan	290 188	151 871
	Feb	271 269	173 999
	Mar	288 783	165 456
	Apr	268 882	158 522
	May	235 280	162 218
	Jun	152 224	211 944
	Jul	134 370	244 343
	Aug	157 001	331 071
	Sep	114 040	250 592
	Oct	130 570	270 488
	Nov	131 556	265 272
	Dec	259 295	187 890
2025	Jan	288 909	185 642
	Feb	251 954	171 773
	Mar	275 941	191 134
	Apr	271 855	112 637
	May	279 548	154 606
	Jun	225 897	191 153
	Jul	160 531	242 151
	Aug	141 962	237 734

Table 2: Electricity Sources Index (2015=100)

Year	Month	Own generated Index	Import Index	Electricity Sources Composite Index
2020	Jan	225.7	72.1	<b>120.7</b>
	Feb	235.5	72.1	<b>123.9</b>
	Mar	243.2	106.0	<b>149.5</b>
	Apr	245.1	57.2	<b>116.7</b>
	May	212.6	74.1	<b>117.9</b>
	Jun	131.7	95.2	<b>106.7</b>
	Jul	141.8	95.7	<b>110.3</b>
	Aug	160.1	88.0	<b>110.8</b>
	Sep	140.3	89.8	<b>105.8</b>
	Oct	126.0	104.4	<b>111.3</b>
	Nov	99.7	107.0	<b>104.7</b>
	Dec	127.5	102.0	<b>110.1</b>
2021	Jan	88.9	107.3	<b>101.4</b>
	Feb	60.3	100.1	<b>87.5</b>
	Mar	59.3	106.2	<b>91.3</b>
	Apr	86.3	105.0	<b>99.1</b>
	May	86.0	105.4	<b>99.3</b>
	Jun	58.1	111.5	<b>94.6</b>
	Jul	43.6	124.8	<b>99.1</b>
	Aug	39.1	126.5	<b>98.8</b>
	Sep	45.9	122.1	<b>98.0</b>
	Oct	55.3	122.1	<b>100.9</b>
	Nov	69.1	113.5	<b>99.4</b>
	Dec	80.6	110.8	<b>101.2</b>
2022	Jan	84.2	105.8	<b>99.0</b>
	Feb	59.2	107.2	<b>91.9</b>
	Mar	126.0	92.8	<b>103.3</b>
	Apr	239.9	49.2	<b>109.6</b>
	May	137.8	85.8	<b>102.2</b>
	Jun	89.1	103.8	<b>99.1</b>
	Jul	91.0	106.4	<b>101.5</b>
	Aug	91.7	106.2	<b>101.6</b>
	Sep	78.9	108.9	<b>99.4</b>
	Oct	73.8	116.8	<b>103.2</b>
	Nov	81.3	109.4	<b>100.5</b>
	Dec	121.8	90.8	<b>100.6</b>

Table 2: Electricity Sources Index (2015=100) continue...

Year	Month	Own generated Index	Import Index	Electricity Sources Composite Index
2023	Jan	157.8	81.9	<b>105.9</b>
	Feb	188.6	62.0	<b>102.1</b>
	Mar	105.2	105.0	<b>105.0</b>
	Apr	210.0	72.6	<b>116.1</b>
	May	240.9	61.6	<b>118.4</b>
	Jun	173.5	75.5	<b>106.6</b>
	Jul	144.9	90.9	<b>108.0</b>
	Aug	136.4	86.0	<b>102.0</b>
	Sep	111.4	93.1	<b>98.9</b>
	Oct	118.6	95.8	<b>103.1</b>
	Nov	160.4	88.3	<b>111.1</b>
	Dec	261.2	67.2	<b>128.6</b>
2024	Jan	262.6	63.7	<b>126.8</b>
	Feb	245.5	73.0	<b>127.7</b>
	Mar	261.4	69.4	<b>130.3</b>
	Apr	243.4	66.5	<b>122.6</b>
	May	213.0	68.1	<b>114.0</b>
	Jun	137.8	89.0	<b>104.4</b>
	Jul	121.6	102.6	<b>108.6</b>
	Aug	142.1	139.0	<b>140.0</b>
	Sep	103.2	105.2	<b>104.6</b>
	Oct	118.2	113.5	<b>115.0</b>
	Nov	119.1	111.3	<b>113.8</b>
	Dec	234.7	78.9	<b>128.2</b>
2025	Jan	261.5	77.9	<b>136.1</b>
	Feb	228.0	72.1	<b>121.5</b>
	Mar	249.8	80.2	<b>133.9</b>
	Apr	246.1	47.3	<b>110.3</b>
	May	253.0	64.9	<b>124.5</b>
	Jun	204.5	80.2	<b>119.6</b>
	Jul	145.3	101.6	<b>115.5</b>
	Aug	128.5	99.8	<b>108.9</b>

Table 3: Electricity Sales in MWH

Year	Month	Domestic Sales	Export Sales
2020	Jan	293,012	9,741
	Feb	263,685	9,854
	Mar	345,424	9,445
	Apr	261,738	9,029
	May	268,139	8,600
	Jun	279,446	9,359
	Jul	289,489	9,704
	Aug	295,368	9,809
	Sep	287,338	9,895
	Oct	299,602	10,497
	Nov	282,311	10,674
	Dec	302,423	10,544
2021	Jan	298,848	9,608
	Feb	271,421	8,931
	Mar	290,056	9,164
	Apr	284,527	9,089
	May	297,400	8,915
	Jun	284,881	9,015
	Jul	297,535	8,978
	Aug	296,030	8,979
	Sep	293,074	9,668
	Oct	301,575	9,917
	Nov	299,292	10,346
	Dec	294,724	10,964
2022	Jan	299,509	13,339
	Feb	277,413	9,566
	Mar	305,817	18,501
	Apr	282,149	35,519
	May	288,780	22,849
	Jun	297,285	10,415
	Jul	307,537	7,535
	Aug	303,106	11,149
	Sep	303,158	4,507
	Oct	313,408	2,238
	Nov	310,318	3,011
	Dec	296,953	4,671

Table 3: Electricity Sales in MWH continue...

Year	Month	Domestic Sales	Export Sales
2023	Jan	314 507	11 777
	Feb	321 345	30 395
	Mar	318 289	9 072
	Apr	302 068	46 496
	May	310 238	38 042
	Jun	300 076	28 321
	Jul	313 495	11 618
	Aug	298 484	19 279
	Sep	303 727	5 645
	Oct	314 812	4 856
	Nov	320 895	25 344
	Dec	310 580	75 727
2024	Jan	316 402	75 037
	Feb	305 879	88 484
	Mar	318 457	80 859
	Apr	307 526	78 837
	May	402 701	44 885
	Jun	320 287	8 604
	Jul	328 280	10 607
	Aug	321 103	24 496
	Sep	310 744	10 131
	Oct	326 678	8 229
	Nov	320 317	13 654
	Dec	332 222	48 969
2025	Jan	326 862	92 945
	Feb	298 987	88 146
	Mar	325 329	101 189
	Apr	303 241	33 857
	May	317 729	61 873
	Jun	323 864	44 983
	Jul	337 895	18 537
	Aug	321 495	27 336

Table 4: Electricity Sales Index

Year	Month	Domestic Sales Index	Export Index	Electricity Sales Composite Index
2020	Jan	108.9	125.2	109.3
	Feb	98.0	126.7	98.8
	Mar	128.4	121.4	128.2
	Apr	97.3	116.1	97.8
	May	99.6	110.5	99.9
	Jun	103.8	120.3	104.3
	Jul	107.6	124.7	108.1
	Aug	109.8	126.1	110.2
	Sep	106.8	127.2	107.4
	Oct	126.9	134.9	127.1
	Nov	115.1	137.2	115.7
	Dec	112.6	135.5	113.2
2021	Jan	111.2	123.5	111.6
	Feb	100.9	114.8	101.3
	Mar	107.8	117.8	108.1
	Apr	105.7	116.8	106.0
	May	110.5	114.6	110.6
	Jun	105.9	115.9	106.1
	Jul	110.6	115.4	110.7
	Aug	110.0	115.4	110.2
	Sep	108.9	124.3	109.3
	Oct	112.1	127.5	112.5
	Nov	111.2	133.0	111.8
	Dec	109.5	140.9	110.4
2022	Jan	111.3	171.5	113.0
	Feb	103.1	123.0	103.6
	Mar	113.6	237.8	117.1
	Apr	104.8	456.5	114.7
	May	107.3	293.7	112.5
	Jun	110.5	133.9	111.1
	Jul	114.3	96.8	113.8
	Aug	112.6	143.3	113.5
	Sep	112.7	57.9	111.1
	Oct	116.5	28.8	114.0
	Nov	115.3	38.7	113.2
	Dec	110.4	60.0	108.9

Table 4: Electricity Sales Index continue...

Year	Month	Domestic Sales Index	Export Index	Electricity Sales Composite Index
2023	Jan	116.9	151.4	117.8
	Feb	119.4	390.7	127.0
	Mar	118.3	116.6	118.2
	Apr	112.3	597.6	125.9
	May	115.3	489.0	125.8
	Jun	111.5	364.0	118.6
	Jul	116.5	149.3	117.4
	Aug	110.9	247.8	114.8
	Sep	112.9	72.6	111.7
	Oct	117.0	62.4	115.5
	Nov	119.2	325.8	125.1
	Dec	115.4	973.4	139.5
2024	Jan	117.6	964.5	141.4
	Feb	113.7	1 137.3	142.4
	Mar	118.3	1 039.3	144.2
	Apr	114.3	1 013.3	139.5
	May	149.6	576.9	161.7
	Jun	119.0	110.6	118.8
	Jul	122.0	136.3	122.4
	Aug	119.3	314.9	124.8
	Sep	115.5	130.2	115.9
	Oct	121.4	105.8	121.0
	Nov	119.0	175.5	120.6
	Dec	123.5	629.4	137.7
2025	Jan	121.5	1 194.7	151.6
	Feb	111.1	1 133.0	139.8
	Mar	120.9	1 300.6	154.0
	Apr	112.7	435.2	121.7
	May	118.1	795.3	137.1
	Jun	120.4	578.2	133.2
	Jul	125.6	238.3	128.7
	Aug	119.5	351.4	126.0

**Methodology** : Graphical and tabular analysis

**Data Sources** : The data source for the volume of electricity is sourced from Nam-power. These are data on domestic and export sale, Own Generation and import sources. The Production is in kilowatts per hour (kWh) for all the variables.

**Index calculation:** The index of sales and sources weighted uses the volume data of 2015.

**Conversion** : 1 basis point = 0.01 percent