

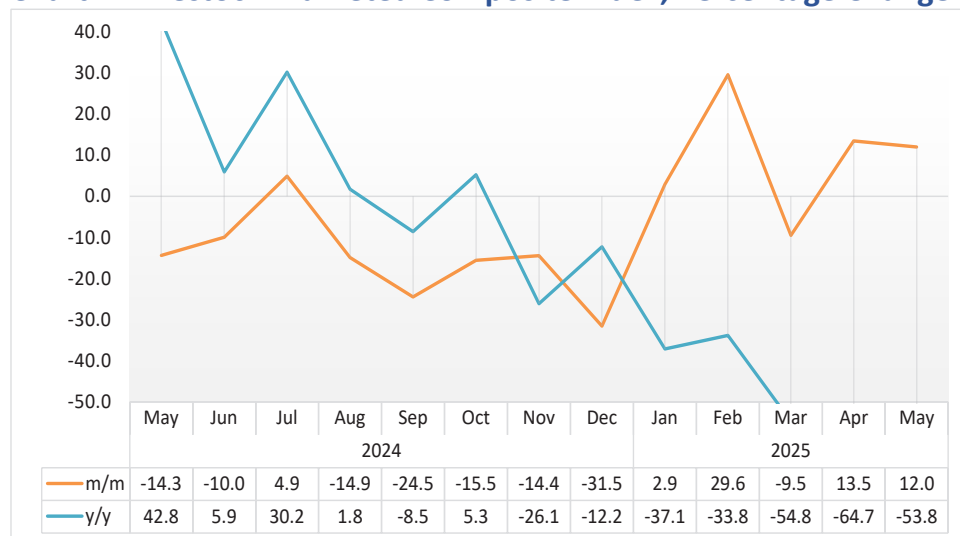


# LIVESTOCK

MAY 2025



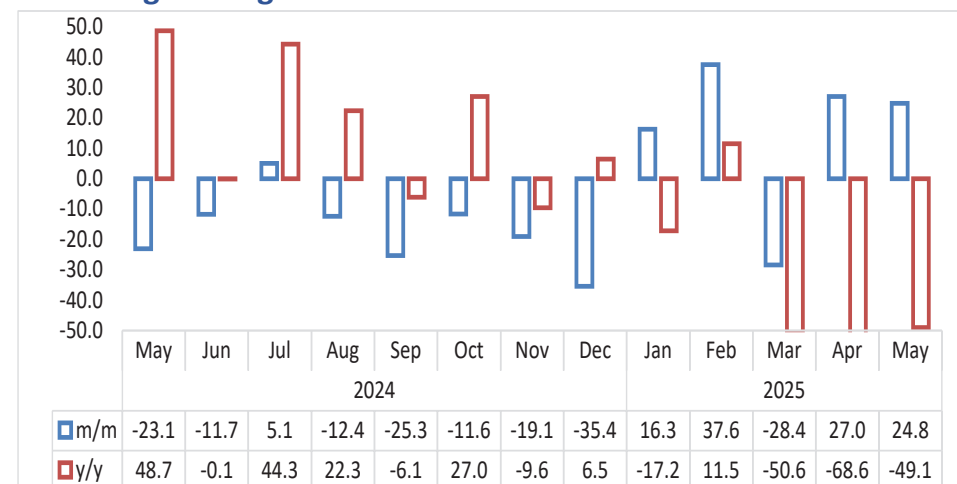
Chart 1: Livestock Marketed Composite Index, Percentage Change<sup>1</sup>



- In May 2025, the **Livestock Marketed Composite Index** slowed down by recording an increase of 12.0 percent on a monthly basis, compared to a growth of 13.5 percent recorded in the previous month. On the other hand, the index experienced a decline of 53.8 percent year-on-year (Chart 1).
- In absolute terms, a total of 75 768 livestock were marketed in May 2025, down from 81 763 in April 2025. This also marks a decline when compared to 162 638 animals marketed in May 2024.

<sup>1</sup> This chart is limited to -50 percent and 40 percent for better presentation.

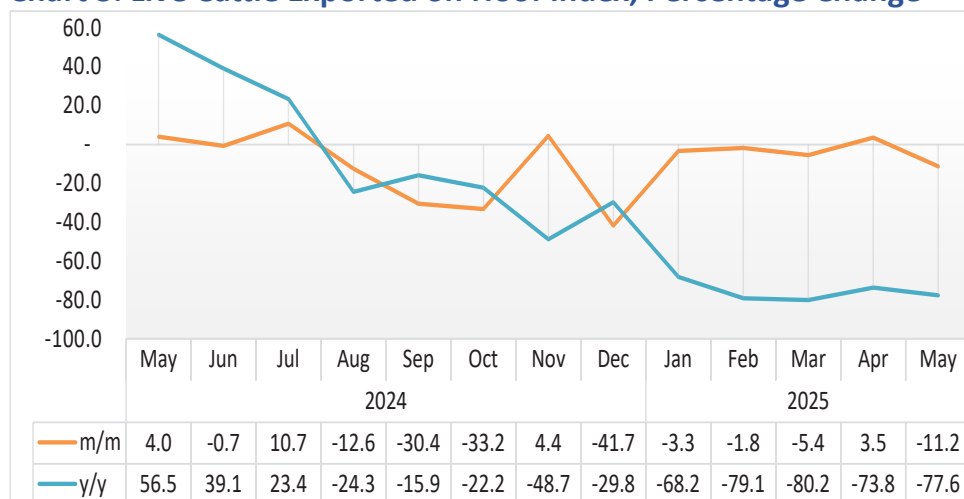
Chart 2: Cattle Export Approved Abattoirs and Butchers Index, Percentage Change<sup>2</sup>



- During the period under review, the **Cattle Export to Approved Abattoirs and Butchers Index** rose by 24.8 percent, compared to a growth of 27.0 percent posted a month earlier. However, on a yearly basis, the index contracted by 49.1 percent (Chart 2).

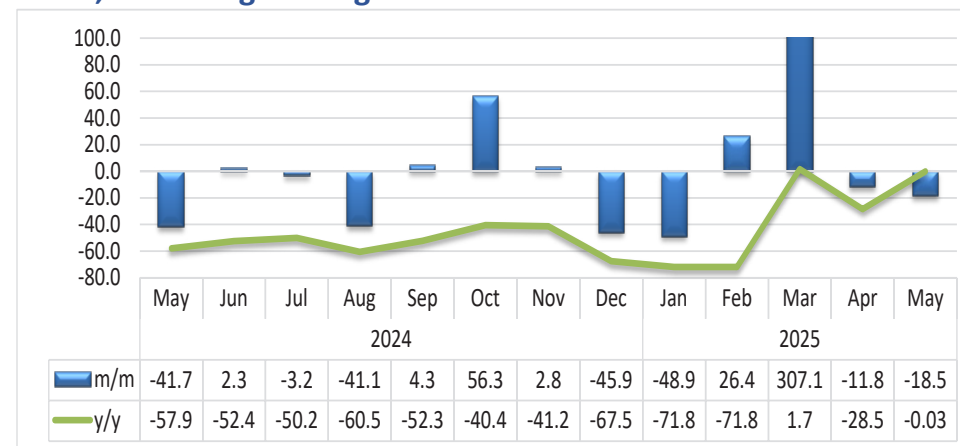
<sup>2</sup> This chart is limited to -50 percent and 50 percent for better presentation.

**Chart 3: Live Cattle Exported on Hoof Index, Percentage Change**



- In May 2025, the **Index for Live Cattle Exported on Hoof** declined by 11.2 percent, following a 3.5 percent increase recorded in the previous month. On a yearly basis, the index saw a decline of 77.6 percent (see Chart 3).

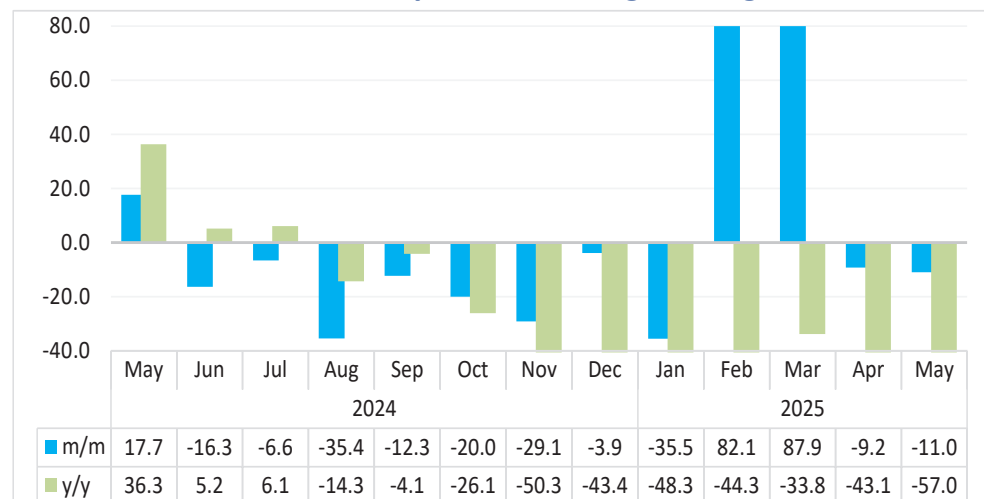
**Chart 4: Small Stock Export Approved Abattoirs and Butchers Index, Percentage Change<sup>3</sup>**



- **Small Stock Export to Approved Abattoirs and Butchers Index** dropped by 18.5 percent on a monthly basis in May 2025, compared to 11.8 percent decline recorded in April 2025. On a yearly basis, the index recorded a decline of 0.03 percent (see Chart 4).
- In absolute terms, a total of 9 022 small stock were sold to export-approved abattoirs and butchers in May 2025. Of these, 9 003 of small stock were sourced from the South of the Veterinary Cordon Fence (S-VCF), while only 19 were sourced from the North of the Veterinary Cordon Fence (N-VCF).

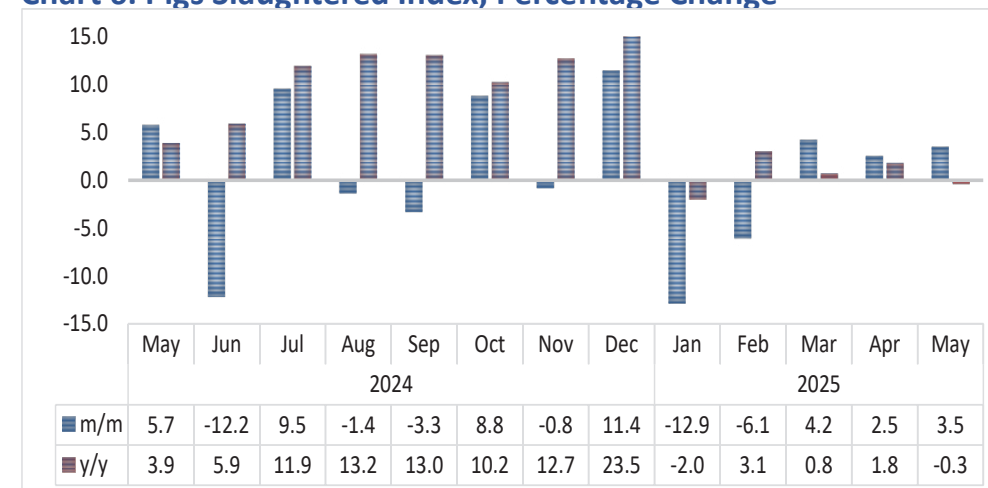
<sup>3</sup> This chart is limited to 100 percent for better presentation.

Chart 5: Live Small Stock Export, Percentage Change<sup>4</sup>



- In May 2025, the **Index for Live Small Stock Export** decreased by 11.0 percent, following a 9.2 percent decline in the previous month. Additionally, year-on-year, the index registered a drop of 57.0 percent (see Chart 5).

Chart 6: Pigs Slaughtered Index, Percentage Change



- The **Pigs Slaughtered Index** rose by 3.5 percent month-on-month in May 2025, up from 2.5 percent increase recorded in the preceding month. However, year-on-year, the index saw a decline of 0.3 percent (see Chart 6).
- The number of pigs slaughtered locally stood at 4 383 heads in May 2025, higher than 4 236 heads slaughtered in April 2025 but lower than 4 398 heads slaughtered in the corresponding month of 2024.

Table 1: Number of livestock Marketed ('000)

| Year | Month | Cattle export abattoirs & butchers | Cattle live exported South Africa & Angola | Small stock Export abattoirs and butchers | Total live small stock exported South Africa and Angola | Pigs slaughtered | Total Livestock Marketed |
|------|-------|------------------------------------|--|---|---|------------------|--------------------------|
| 2021 | Jan   | 4                                  | 7  | 9   | 7   | 3                | 30                       |
|      | Feb   | 5                                  | 8  | 11  | 21  | 4                | 49                       |
|      | Mar   | 8                                  | 11   | 12  | 42  | 4                | 77                       |
|      | Apr   | 8                                  | 10   | 14  | 41  | 4                | 77                       |
|      | May   | 8                                  | 10   | 10  | 54  | 4                | 86                       |
|      | Jun   | 9                                  | 12   | 11  | 52  | 4                | 88                       |
|      | Jul   | 10                                 | 14   | 10  | 33  | 4                | 72                       |
|      | Aug   | 9                                  | 15   | 10  | 25  | 4                | 63                       |
|      | Sep   | 7                                  | 15   | 10  | 21  | 4                | 57                       |
|      | Oct   | 8                                  | 13   | 5   | 27  | 4                | 56                       |
|      | Nov   | 6                                  | 13   | 7   | 29  | 4                | 58                       |
|      | Dec   | 5                                  | 10   | 5   | 39  | 4                | 62                       |
| 2022 | Jan   | 8                                  | 8  | 7   | 20  | 4                | 46                       |
|      | Feb   | 8                                  | 10   | 7   | 32  | 3                | 61                       |
|      | Mar   | 8                                  | 11   | 10  | 58  | 4                | 91                       |
|      | Apr   | 12                                 | 10   | 29  | 66  | 4                | 121                      |
|      | May   | 10                                 | 14   | 12  | 73  | 4                | 113                      |
|      | Jun   | 12                                 | 14   | 16  | 75  | 4                | 121                      |
|      | Jul   | 10                                 | 16   | 13  | 58  | 3                | 99                       |
|      | Aug   | 8                                  | 10   | 12  | 34  | 5                | 70                       |
|      | Sep   | 9                                  | 10   | 12  | 30  | 4                | 64                       |
|      | Oct   | 9                                  | 16   | 12  | 32  | 4                | 72                       |
|      | Nov   | 9                                  | 13   | 14  | 40  | 4                | 80                       |
|      | Dec   | 9                                  | 8  | 19  | 43  | 4                | 83                       |
| 2023 | Jan   | 8                                  | 10   | 11  | 21  | 4                | 54                       |
|      | Feb   | 8                                  | 8  | 16  | 40  | 4                | 75                       |
|      | Mar   | 12                                 | 12   | 25  | 77  | 4                | 131                      |
|      | Apr   | 12                                 | 13   | 20  | 89  | 4                | 138                      |
|      | May   | 15                                 | 11   | 21  | 80  | 4                | 132                      |
|      | Jun   | 20                                 | 12   | 19  | 87  | 4                | 142                      |
|      | Jul   | 14                                 | 16   | 18  | 81  | 4                | 132                      |
|      | Aug   | 15                                 | 22   | 13  | 65  | 4                | 119                      |
|      | Sep   | 14                                 | 14   | 11  | 51  | 4                | 94                       |
|      | Oct   | 9                                  | 10   | 14  | 53  | 4                | 90                       |
|      | Nov   | 11                                 | 16   | 15  | 55  | 4                | 101                      |
|      | Dec   | 6                                  | 7  | 15  | 47  | 4                | 78                       |

Table 1: Number of livestock Marketed ('000) continued...

| Year | Month | Cattle export abattoirs & butchers | Cattle live exported South Africa & Angola | Small stock Export abattoirs and butchers | Total live small stock exported South Africa and Angola | Pigs slaughtered | Total Livestock Marketed |
|------|-------|------------------------------------|--|---|---|------------------|--------------------------|
| 2024 | Jan   | 9                                  | 14   | 9   | 33  | 4                | 69                       |
|      | Feb   | 9                                  | 22   | 11  | 56  | 4                | 101                      |
|      | Mar   | 14                                 | 21   | 12  | 88  | 4                | 141                      |
|      | Apr   | 29                                 | 17   | 15  | 93  | 4                | 158                      |
|      | May   | 22                                 | 17   | 9   | 110   | 4                | 163                      |
|      | Jun   | 20                                 | 17   | 9   | 92  | 4                | 142                      |
|      | Jul   | 20                                 | 19   | 9   | 86  | 4                | 139                      |
|      | Aug   | 18                                 | 17   | 5   | 55  | 4                | 100                      |
|      | Sep   | 13                                 | 12   | 5   | 49  | 4                | 83                       |
|      | Oct   | 12                                 | 8  | 9   | 39  | 4                | 71                       |
|      | Nov   | 10                                 | 8  | 9   | 28  | 4                | 58                       |
|      | Dec   | 6                                  | 5  | 5   | 26  | 5                | 47                       |
| 2025 | Jan   | 7                                  | 5  | 2   | 17  | 4                | 36                       |
|      | Feb   | 10                                 | 5  | 3   | 31  | 4                | 53                       |
|      | Mar   | 7                                  | 4  | 13  | 58  | 4                | 86                       |
|      | Apr   | 9                                  | 4  | 11  | 53  | 4                | 82                       |
|      | May   | 11                                 | 4  | 9   | 47  | 4                | 76                       |

Table 2: Indices of Livestock Marketed

| Year | Month | Cattle export abattoirs & butchers | Cattle Live export on hoof | Small stock Export abattoirs and butchers | Total live small stock exported South Africa and Angola | Pigs slaughtered | Composite Index |
|------|-------|------------------------------------|----------------------------|---|---|------------------|-----------------|
| 2021 | Jan   | 43.2                               | 32.0                       | 20.4                                      | 14.7  | 105.5            | 36.8            |
|      | Feb   | 54.3                               | 36.2                       | 25.5                                      | 44.6  | 116.5            | 46.4            |
|      | Mar   | 78.6                               | 52.1                       | 27.3                                      | 87.5  | 132.6            | 67.2            |
|      | Apr   | 84.0                               | 45.7                       | 32.5                                      | 84.5  | 116.9            | 66.8            |
|      | May   | 80.7                               | 47.9                       | 23.6                                      | 112.9   | 114.9            | 67.9            |
|      | Jun   | 92.2                               | 56.5                       | 26.0                                      | 108.3   | 112.5            | 75.7            |
|      | Jul   | 105.2                              | 65.7                       | 23.2                                      | 69.4  | 120.1            | 81.4            |
|      | Aug   | 95.4                               | 68.9                       | 22.8                                      | 52.1  | 122.2            | 77.0            |
|      | Sep   | 75.3                               | 70.2                       | 22.0                                      | 43.5  | 121.1            | 67.9            |
|      | Oct   | 79.6                               | 59.7                       | 11.3                                      | 57.0  | 113.2            | 65.9            |
|      | Nov   | 59.6                               | 61.4                       | 15.4                                      | 60.0  | 119.1            | 58.7            |
|      | Dec   | 48.5                               | 44.6                       | 10.5                                      | 81.0  | 135.6            | 49.7            |
| 2022 | Jan   | 78.2                               | 38.9                       | 15.4                                      | 40.9  | 115.0            | 56.6            |
|      | Feb   | 81.3                               | 47.0                       | 16.8                                      | 67.2  | 110.1            | 63.2            |
|      | Mar   | 83.8                               | 49.9                       | 23.7                                      | 121.4   | 123.6            | 71.0            |
|      | Apr   | 124.6                              | 47.3                       | 67.0                                      | 136.6   | 128.4            | 92.4            |
|      | May   | 101.2                              | 65.1                       | 28.3                                      | 151.4   | 129.7            | 87.3            |
|      | Jun   | 118.0                              | 67.0                       | 35.9                                      | 156.2   | 122.5            | 96.0            |
|      | Jul   | 96.6                               | 73.1                       | 30.3                                      | 120.3   | 102.9            | 84.9            |
|      | Aug   | 79.1                               | 48.6                       | 28.3                                      | 71.8  | 146.2            | 65.3            |
|      | Sep   | 86.0                               | 46.0                       | 28.4                                      | 62.0  | 117.8            | 65.5            |
|      | Oct   | 86.7                               | 73.4                       | 27.1                                      | 67.4  | 122.5            | 76.6            |
|      | Nov   | 94.2                               | 60.5                       | 32.2                                      | 82.9  | 139.4            | 77.3            |
|      | Dec   | 89.0                               | 37.6                       | 43.6                                      | 90.3  | 119.2            | 67.4            |
| 2023 | Jan   | 76.3                               | 46.1                       | 25.9                                      | 44.3  | 120.9            | 59.8            |
|      | Feb   | 80.5                               | 39.1                       | 35.5                                      | 83.0  | 117.4            | 62.9            |
|      | Mar   | 124.9                              | 58.4                       | 56.6                                      | 161.1   | 116.1            | 97.6            |
|      | Apr   | 119.6                              | 61.5                       | 46.5                                      | 185.4   | 116.5            | 97.8            |
|      | May   | 149.5                              | 52.4                       | 49.1                                      | 167.5   | 135.0            | 106.5           |
|      | Jun   | 196.6                              | 58.5                       | 44.4                                      | 181.7   | 116.2            | 129.3           |
|      | Jul   | 143.0                              | 73.0                       | 41.0                                      | 168.4   | 120.5            | 110.4           |
|      | Aug   | 147.8                              | 104.1                      | 30.5                                      | 134.6   | 117.5            | 120.2           |
|      | Sep   | 143.8                              | 65.2                       | 26.3                                      | 105.6   | 113.8            | 101.0           |
|      | Oct   | 94.0                               | 47.0                       | 33.0                                      | 109.6   | 126.9            | 74.1            |
|      | Nov   | 106.8                              | 74.5                       | 34.3                                      | 115.4   | 123.0            | 90.4            |
|      | Dec   | 58.6                               | 31.7                       | 33.6                                      | 97.3  | 125.1            | 52.1            |

Table 2: Indices of Livestock Marketed continued....

| Year | Month | Cattle export abattoirs & butchers | Cattle Live export on hoof | Small stock Export abattoirs and butchers | Total live small stock exported South Africa and Angola | Pigs slaughtered | Composite Index |
|------|-------|------------------------------------|----------------------------|---|---|------------------|-----------------|
| 2024 | Jan   | 87.6                               | 67.8                       | 19.8                                      | 68.7  | 137.3            | 74.9            |
|      | Feb   | 89.5                               | 101.3                      | 25.0                                      | 116.2   | 122.7            | 92.2            |
|      | Mar   | 144.6                              | 100.7                      | 28.2                                      | 183.8   | 130.8            | 122.1           |
|      | Apr   | 289.1                              | 78.8                       | 35.5                                      | 194.1   | 132.6            | 177.6           |
|      | May   | 222.4                              | 82.0                       | 20.7                                      | 228.4   | 140.2            | 152.1           |
|      | Jun   | 196.4                              | 81.4                       | 21.1                                      | 191.1   | 123.1            | 137.0           |
|      | Jul   | 206.4                              | 90.1                       | 20.5                                      | 178.6   | 134.9            | 143.7           |
|      | Aug   | 180.8                              | 78.8                       | 12.1                                      | 115.3   | 133.0            | 122.3           |
|      | Sep   | 135.0                              | 54.8                       | 12.6                                      | 101.2   | 128.6            | 92.4            |
|      | Oct   | 119.4                              | 36.6                       | 19.6                                      | 80.9  | 139.8            | 78.0            |
|      | Nov   | 96.6                               | 38.2                       | 20.2                                      | 57.4  | 138.7            | 66.8            |
|      | Dec   | 62.4                               | 22.3                       | 10.9                                      | 55.1  | 154.5            | 45.7            |
| 2025 | Jan   | 72.5                               | 21.5                       | 5.6                                       | 35.5  | 134.6            | 47.1            |
|      | Feb   | 99.8                               | 21.1                       | 7.1                                       | 64.7  | 126.4            | 61.0            |
|      | Mar   | 71.5                               | 20.0                       | 28.7                                      | 121.6   | 131.7            | 55.2            |
|      | Apr   | 90.8                               | 20.7                       | 25.4                                      | 110.4   | 135.1            | 62.7            |
|      | May   | 113.3                              | 18.4                       | 20.7                                      | 98.3  | 139.7            | 70.2            |

|                              |   |  |
|------------------------------|---|--|
| <b>Data Sources</b>          | : | The data was obtained from the Livestock and Livestock Products Board of Namibia.  |
| <b>Base year</b>             | : | Livestock Sectoral report is harmonized with the quarterly and annual national accounts base year 2015.  |
| <b>Sector Classification</b> | : | The ISIC CODE for this sector is 4620 for live animals and 4621 for slaughtered animals.   |
| <b>Calculations of index</b> | : | The index is calculated based on the 2015 base year volumes and 2015 weights. The index is the magnitude of the volume. Changes over time, with reference to the volume of the base year 2015. The index is calculated as a ratio of the volume of a specific component in a specific month to the total volume of that component in 2015. |
| <b>Conversion</b>            | : | 1 basis point = 0.01 percent   |