



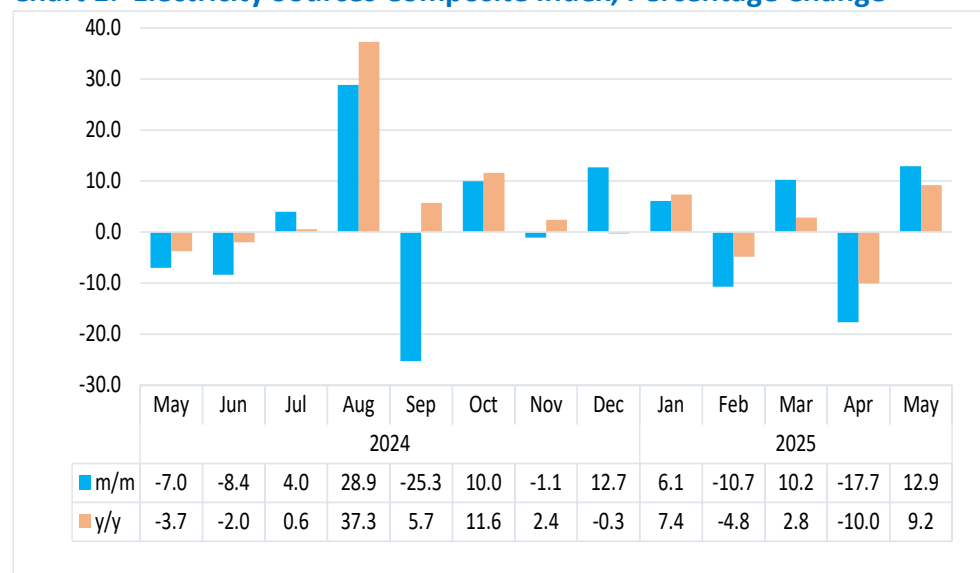
Namibia Statistics  
Agency

# ELECTRICITY

MAY 2025

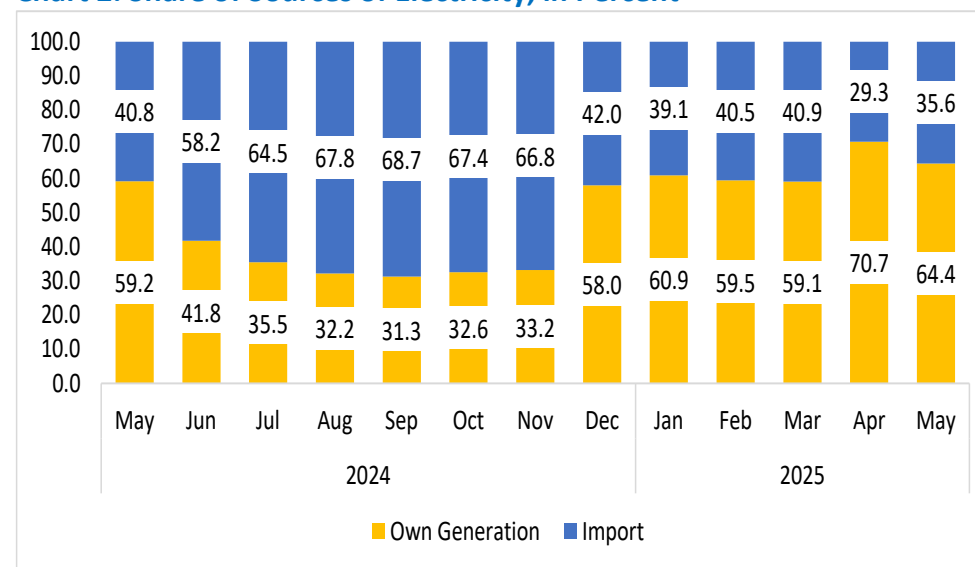


**Chart 1: Electricity Sources Composite Index, Percentage Change**



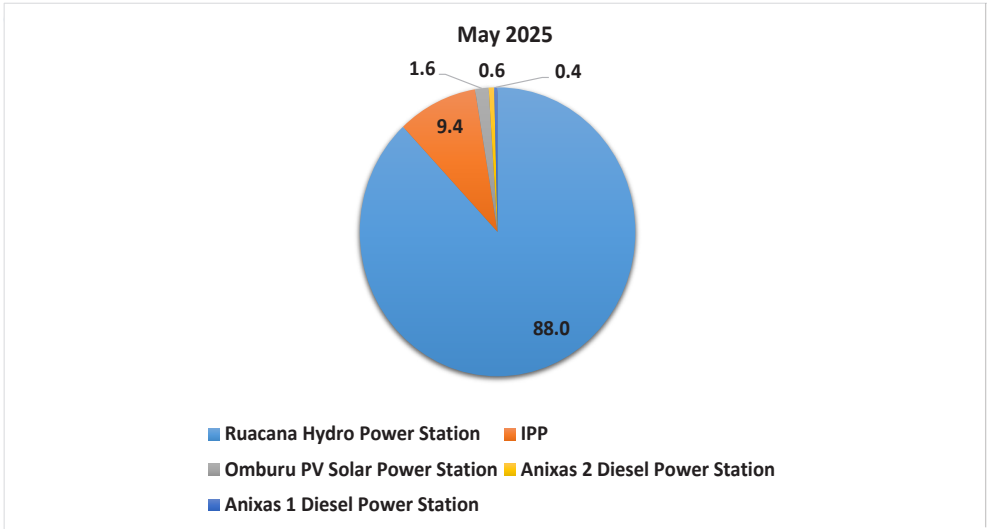
- **Electricity Sources Composite Index**, which includes both own generation (local production) and import, increased by 12.9 percent in May 2025 in contrast to a decline of 17.7 percent posted in the preceding month. Similarly, the index rose by 9.2 percent year-on-year (Chart 1).
- In May 2025, a total of 434 154 MWh of electricity was supplied in the domestic economy, this was higher than 384 492 MWh and 397 498 supplied a month earlier and the corresponding month of 2024, respectively.

**Chart 2: Share of Sources of Electricity, in Percent**



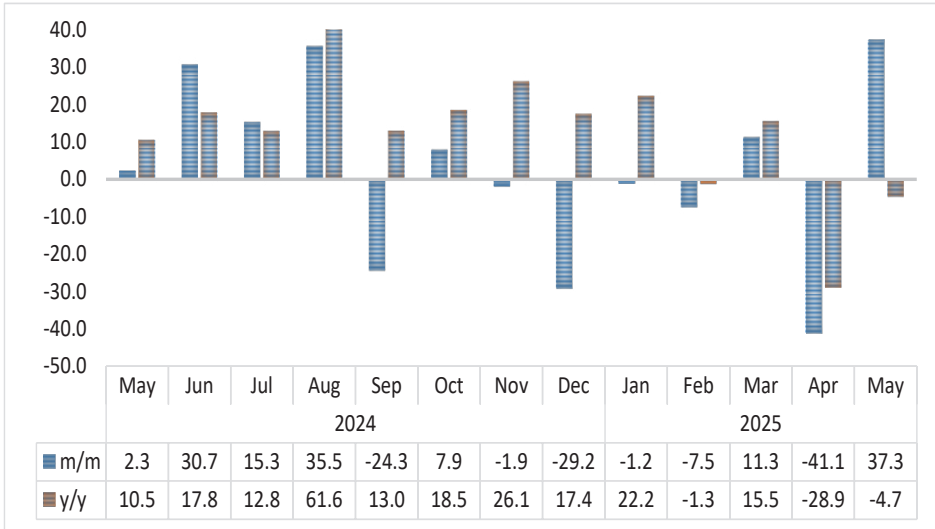
- Own generation contributed 64.4 percent (279 548 MWh) of the total electricity supplied to the domestic economy, while imports made up the remaining 35.6 percent (154 606 MWh). This distribution aligns with what has been observed in both April 2025 and May 2024, where local generation accounted for the majority share of electricity supply.

Chart 3: Share of Electricity for Own Generation, in Percent



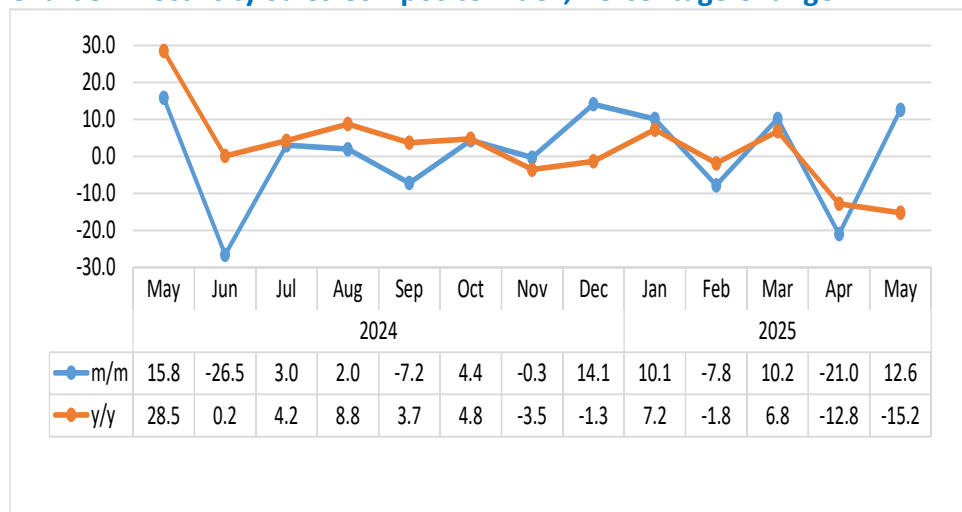
- In May 2025, total local electricity generation amounted to 279 548 MWh. The Ruacana Hydro Power Station was the highest contributor to local production, generating 88.0 percent (245 900 MWh), followed by Independent Power Producers (IPPs) with 9.4 percent (26 334 MWh). The Omburu PV Solar Power Station accounted for 1.6 percent (4 430 MWh) of the total local output.
- Furthermore, the Anixas 2 Diesel Power Station ranked fourth, contributing 0.6 percent (1 803 MWh) to the overall own generation (see Chart 3).

Chart 4: Electricity Import Index, Percentage Change



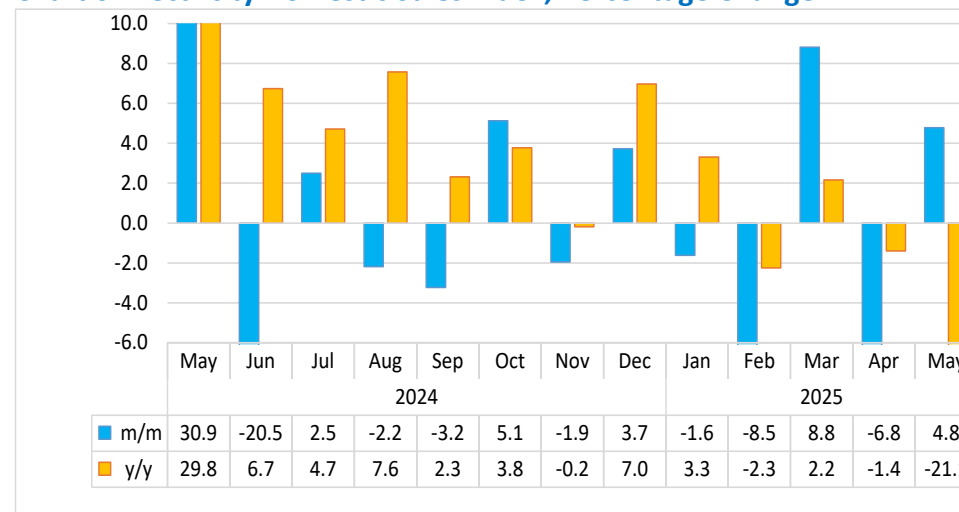
- **Electricity Import Index** in May 2025 increased by 37.3 percent on a monthly basis, as opposed to a reduction of 41.1 percent recorded in the preceding month. Year-on-year, the index fell by 4.7 percent (Chart 4).
- Zambia was the main source of electricity imports, supplying 42.9 percent of the total import electricity, followed by South Africa with 38.1 percent share. While Zimbabwe contributed 8.2 percent, ahead of Eskom Orange River and the Day Ahead Market-SAPP which ranked fourth and fifth, accounting for 6.9 percent and 4.0 percent, respectively.

Chart 5: Electricity Sales Composite Index, Percentage Change



- The **Electricity Sales Composite Index** rose by 12.6 percent on a monthly basis in May 2025, in contrast to a decline of 21.0 percent observed in the previous month. On the other hand, year-on-year, the index reduced by 15.2 percent (Chart 5).
- Total electricity sales in May 2025 stood at 379 603 MWh, above 337 098 MWh sold in April 2025, but below 447 586 MWh sold in the corresponding month of 2024.

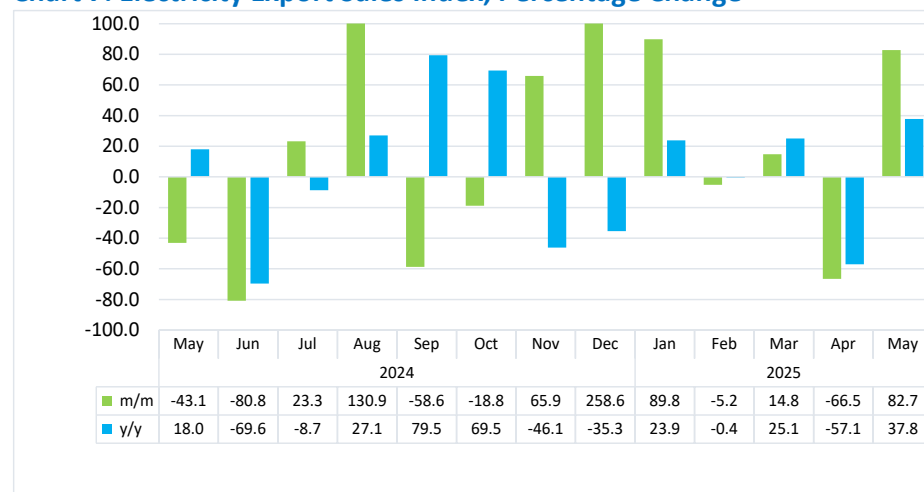
Chart 6: Electricity Domestic Sales Index, Percentage Change<sup>1</sup>



- The **Domestic Electricity Sales Index** in May 2025 grew by 4.8 percent on a monthly basis, as opposed to a reduction of 6.8 percent recorded in April 2025. Year-on-year, the index declined by 21.1 percent (Chart 6).
- Most of the domestic electricity sales were to Redistributors - LPU (66.0%), followed by Mines (27.1%) and Eskom Orange River (3.4%).
- While domestic sales to Farms - Main Supply and Commercial – LPU ranked fourth and fifth, with 1.2 percent and 0.7 percent, respectively.

<sup>1</sup> This chart is limited to -6 percent and 10 percent for better readability.

Chart 7: Electricity Export Sales Index, Percentage Change<sup>2</sup>



- **Electricity Export Sales Index** increased by 82.7 percent in May 2025, in contrast to a contraction of 66.5 percent posted in April 2025. Furthermore, the index experienced a rise of 37.8 percent year-on-year (Chart 7).
- During the review period, Namibia exported a total of 61 873 MWh of electricity. The largest proportion of 96.5 percent was exported to STEM Sales - SAPP. Botswana was the second-largest export market with 2.0 percent, followed by South Africa and Angola, each with 0.8 percent and 0.7 percent respectively.

<sup>2</sup> This chart is limited to 100 percent for better readability.

Table 1: Electricity Sources in MWH

Year	Month	Own generated	Import
2020	Jan	249,327	171,655
	Feb	260,165	171,759
	Mar	268,742	252,506
	Apr	270,785	136,187
	May	234,883	176,429
	Jun	145,495	226,701
	Jul	156,692	227,982
	Aug	176,845	209,579
	Sep	155,062	213,956
	Oct	139,242	248,759
	Nov	110,168	255,038
	Dec	140,822	243,109
2021	Jan	98,191	255,534
	Feb	66,648	238,395
	Mar	65,547	252,906
	Apr	95,326	250,225
	May	95,027	251,119
	Jun	64,155	265,577
	Jul	48,192	297,297
	Aug	43,152	301,495
	Sep	50,664	290,922
	Oct	61,058	290,893
	Nov	76,294	270,322
	Dec	89,054	263,899
2022	Jan	93,044	252,026
	Feb	65,362	255,286
	Mar	139,261	221,067
	Apr	265,053	117,300
	May	152,261	204,296
	Jun	98,405	247,188
	Jul	100,515	253,554
	Aug	101,360	252,948
	Sep	87,212	259,414
	Oct	81,558	278,245
	Nov	89,789	260,750
	Dec	134,559	216,217

Table 1: Electricity Sources in MWH continue...

Year	Month	Own generated	Import
2023	Jan	174,396	195,004
	Feb	208,340	147,774
	Mar	116,256	250,059
	Apr	232,039	172,956
	May	266,144	146,833
	Jun	191,672	179,945
	Jul	160,051	216,521
	Aug	150,729	204,813
	Sept	123,030	221,823
	Oct	131,052	228,332
	Nov	177,168	210,293
	Dec	288,544	160,000
2024	Jan	290,188	151,871
	Feb	271,269	173,999
	Mar	288,783	165,456
	Apr	268,882	158,522
	May	235,280	162,218
	Jun	152,224	211,944
	Jul	134,370	244,343
	Aug	157,001	331,071
	Sep	114,040	250,592
	Oct	130,570	270,488
	Nov	131,556	265,272
	Dec	259,295	187,890
2025	Jan	288,909	185,642
	Feb	251,954	171,773
	Mar	275,941	191,134
	Apr	271,855	112,637
	May	279,548	154,606

Table 2: Electricity Sources Index (2015=100)

Year	Month	Own generated Index	Import Index	Electricity Sources Composite Index
2020	Jan	225.7	72.1	<b>120.7</b>
	Feb	235.5	72.1	<b>123.9</b>
	Mar	243.2	106.0	<b>149.5</b>
	Apr	245.1	57.2	<b>116.7</b>
	May	212.6	74.1	<b>117.9</b>
	Jun	131.7	95.2	<b>106.7</b>
	Jul	141.8	95.7	<b>110.3</b>
	Aug	160.1	88.0	<b>110.8</b>
	Sep	140.3	89.8	<b>105.8</b>
	Oct	126.0	104.4	<b>111.3</b>
	Nov	99.7	107.0	<b>104.7</b>
	Dec	127.5	102.0	<b>110.1</b>
2021	Jan	88.9	107.3	<b>101.4</b>
	Feb	60.3	100.1	<b>87.5</b>
	Mar	59.3	106.2	<b>91.3</b>
	Apr	86.3	105.0	<b>99.1</b>
	May	86.0	105.4	<b>99.3</b>
	Jun	58.1	111.5	<b>94.6</b>
	Jul	43.6	124.8	<b>99.1</b>
	Aug	39.1	126.5	<b>98.8</b>
	Sep	45.9	122.1	<b>98.0</b>
	Oct	55.3	122.1	<b>100.9</b>
	Nov	69.1	113.5	<b>99.4</b>
	Dec	80.6	110.8	<b>101.2</b>
2022	Jan	84.2	105.8	<b>99.0</b>
	Feb	59.2	107.2	<b>91.9</b>
	Mar	126.0	92.8	<b>103.3</b>
	Apr	239.9	49.2	<b>109.6</b>
	May	137.8	85.8	<b>102.2</b>
	Jun	89.1	103.8	<b>99.1</b>
	Jul	91.0	106.4	<b>101.5</b>
	Aug	91.7	106.2	<b>101.6</b>
	Sep	78.9	108.9	<b>99.4</b>
	Oct	73.8	116.8	<b>103.2</b>
	Nov	81.3	109.4	<b>100.5</b>
	Dec	121.8	90.8	<b>100.6</b>

Table 2: Electricity Sources Index (2015=100) continue...

Year	Month	Own generated Index	Import Index	Electricity Sources Composite Index
2023	Jan	157.8	81.9	<b>105.9</b>
	Feb	188.6	62.0	<b>102.1</b>
	Mar	105.2	105.0	<b>105.0</b>
	Apr	210.0	72.6	<b>116.1</b>
	May	240.9	61.6	<b>118.4</b>
	Jun	173.5	75.5	<b>106.6</b>
	Jul	144.9	90.9	<b>108.0</b>
	Aug	136.4	86.0	<b>102.0</b>
	Sep	111.4	93.1	<b>98.9</b>
	Oct	118.6	95.8	<b>103.1</b>
	Nov	160.4	88.3	<b>111.1</b>
	Dec	261.2	67.2	<b>128.6</b>
2024	Jan	262.6	63.7	<b>126.8</b>
	Feb	245.5	73.0	<b>127.7</b>
	Mar	261.4	69.4	<b>130.3</b>
	Apr	243.4	66.5	<b>122.6</b>
	May	213.0	68.1	<b>114.0</b>
	Jun	137.8	89.0	<b>104.4</b>
	Jul	121.6	102.6	<b>108.6</b>
	Aug	142.1	139.0	<b>140.0</b>
	Sep	103.2	105.2	<b>104.6</b>
	Oct	118.2	113.5	<b>115.0</b>
	Nov	119.1	111.3	<b>113.8</b>
	Dec	234.7	78.9	<b>128.2</b>
2025	Jan	261.5	77.9	<b>136.1</b>
	Feb	228.0	72.1	<b>121.5</b>
	Mar	249.8	80.2	<b>133.9</b>
	Apr	246.1	47.3	<b>110.3</b>
	May	253.0	64.9	<b>124.5</b>

Table 3: Electricity Sales in MWH

Year	Month	Domestic Sales	Export Sales
2020	Jan	293,012	9,741
	Feb	263,685	9,854
	Mar	345,424	9,445
	Apr	261,738	9,029
	May	268,139	8,600
	Jun	279,446	9,359
	Jul	289,489	9,704
	Aug	295,368	9,809
	Sep	287,338	9,895
	Oct	299,602	10,497
	Nov	282,311	10,674
	Dec	302,423	10,544
2021	Jan	298,848	9,608
	Feb	271,421	8,931
	Mar	290,056	9,164
	Apr	284,527	9,089
	May	297,400	8,915
	Jun	284,881	9,015
	Jul	297,535	8,978
	Aug	296,030	8,979
	Sep	293,074	9,668
	Oct	301,575	9,917
	Nov	299,292	10,346
	Dec	294,724	10,964
2022	Jan	299,509	13,339
	Feb	277,413	9,566
	Mar	305,817	18,501
	Apr	282,149	35,519
	May	288,780	22,849
	Jun	297,285	10,415
	Jul	307,537	7,535
	Aug	303,106	11,149
	Sep	303,158	4,507
	Oct	313,408	2,238
	Nov	310,318	3,011
	Dec	296,953	4,671

Table 3: Electricity Sales in MWH continue...

Year	Month	Domestic Sales	Export Sales
2023	Jan	314,507	11,777
	Feb	321,345	30,395
	Mar	318,289	9,072
	Apr	302,068	46,496
	May	310,238	38,042
	Jun	300,076	28,321
	Jul	313,495	11,618
	Aug	298,484	19,279
	Sep	303,727	5,645
	Oct	314,812	4,856
	Nov	320,895	25,344
	Dec	310,580	75,727
2024	Jan	316,402	75,037
	Feb	305,879	88,484
	Mar	318,457	80,859
	Apr	307,526	78,837
	May	402,701	44,885
	Jun	320,287	8,604
	Jul	328,280	10,607
	Aug	321,103	24,496
	Sep	310,744	10,131
	Oct	326,678	8,229
	Nov	320,317	13,654
	Dec	332,222	48,969
2025	Jan	326,862	92,945
	Feb	298,987	88,146
	Mar	325,329	101,189
	Apr	303,241	33,857
	May	317,729	61,873



**Table 4: Electricity Sales Index**

Year	Month	Domestic Sales Index	Export Index	Electricity Sales Composite Index
<b>2020</b>	Jan	108.9	125.2	<b>109.3</b>
	Feb	98.0	126.7	<b>98.8</b>
	Mar	128.4	121.4	<b>128.2</b>
	Apr	97.3	116.1	<b>97.8</b>
	May	99.6	110.5	<b>99.9</b>
	Jun	103.8	120.3	<b>104.3</b>
	Jul	107.6	124.7	<b>108.1</b>
	Aug	109.8	126.1	<b>110.2</b>
	Sep	106.8	127.2	<b>107.4</b>
	Oct	126.9	134.9	<b>127.1</b>
	Nov	115.1	137.2	<b>115.7</b>
	Dec	112.6	135.5	<b>113.2</b>
<b>2021</b>	Jan	111.2	123.5	<b>111.6</b>
	Feb	100.9	114.8	<b>101.3</b>
	Mar	107.8	117.8	<b>108.1</b>
	Apr	105.7	116.8	<b>106.0</b>
	May	110.5	114.6	<b>110.6</b>
	Jun	105.9	115.9	<b>106.1</b>
	Jul	110.6	115.4	<b>110.7</b>
	Aug	110.0	115.4	<b>110.2</b>
	Sep	108.9	124.3	<b>109.3</b>
	Oct	112.1	127.5	<b>112.5</b>
	Nov	111.2	133.0	<b>111.8</b>
	Dec	109.5	140.9	<b>110.4</b>
<b>2022</b>	Jan	111.3	171.5	<b>113.0</b>
	Feb	103.1	123.0	<b>103.6</b>
	Mar	113.6	237.8	<b>117.1</b>
	Apr	104.8	456.5	<b>114.7</b>
	May	107.3	293.7	<b>112.5</b>
	Jun	110.5	133.9	<b>111.1</b>
	Jul	114.3	96.8	<b>113.8</b>
	Aug	112.6	143.3	<b>113.5</b>
	Sep	112.7	57.9	<b>111.1</b>
	Oct	116.5	28.8	<b>114.0</b>
	Nov	115.3	38.7	<b>113.2</b>
	Dec	110.4	60.0	<b>108.9</b>

**Table 4: Electricity Sales Index continue...**

Year	Month	Domestic Sales Index	Export Index	Electricity Sales Composite Index
<b>2023</b>	Jan	116.9	151.4	<b>117.8</b>
	Feb	119.4	390.7	<b>127.0</b>
	Mar	118.3	116.6	<b>118.2</b>
	Apr	112.3	597.6	<b>125.9</b>
	May	115.3	489.0	<b>125.8</b>
	Jun	111.5	364.0	<b>118.6</b>
	Jul	116.5	149.3	<b>117.4</b>
	Aug	110.9	247.8	<b>114.8</b>
	Sep	112.9	72.6	<b>111.7</b>
	Oct	117.0	62.4	<b>115.5</b>
	Nov	119.2	325.8	<b>125.1</b>
	Dec	115.4	973.4	<b>139.5</b>
<b>2024</b>	Jan	117.6	964.5	<b>141.4</b>
	Feb	113.7	1,137.3	<b>142.4</b>
	Mar	118.3	1,039.3	<b>144.2</b>
	Apr	114.3	1,013.3	<b>139.5</b>
	May	149.6	576.9	<b>161.7</b>
	Jun	119.0	110.6	<b>118.8</b>
	Jul	122.0	136.3	<b>122.4</b>
	Aug	119.3	314.9	<b>124.8</b>
	Sep	115.5	130.2	<b>115.9</b>
	Oct	121.4	105.8	<b>121.0</b>
	Nov	119.0	175.5	<b>120.6</b>
	Dec	123.5	629.4	<b>137.7</b>
<b>2025</b>	Jan	121.5	1,194.7	<b>151.6</b>
	Feb	111.1	1,133.0	<b>139.8</b>
	Mar	120.9	1,300.6	<b>154.0</b>
	Apr	112.7	435.2	<b>121.7</b>
	May	118.1	795.3	<b>137.1</b>

**Methodology** : Graphical and tabular analysis

**Data Sources** : The data source for the volume of electricity is sourced from Nam-power. These are data on domestic and export sale, Own Generation and import sources. The Production is in kilowatts per hour (kWh) for all the variables.

**Index calculation:** The index of sales and sources weighted uses the volume data of 2015.

**Conversion** : 1 basis point = 0.01 percent