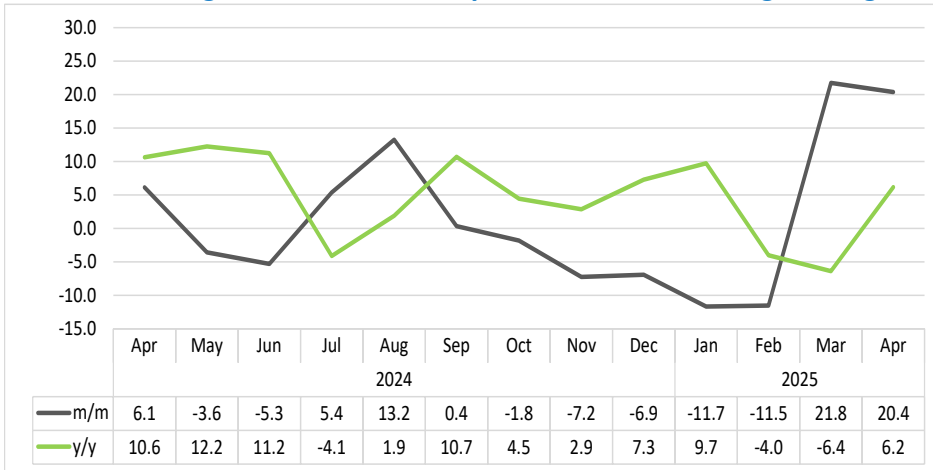


# PASSENGERS ARRIVALS & DEPARTURES

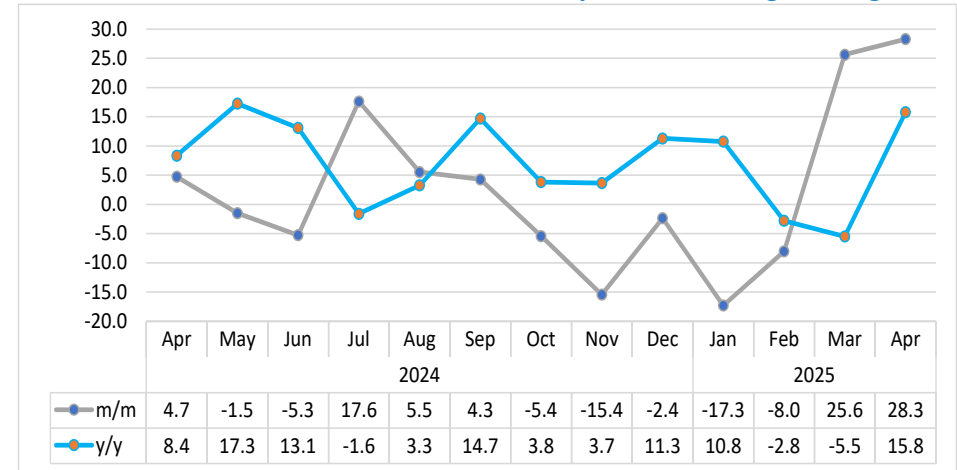
APRIL 2025



**Chart 1: Passengers Movement Composite Index, Percentage Change**



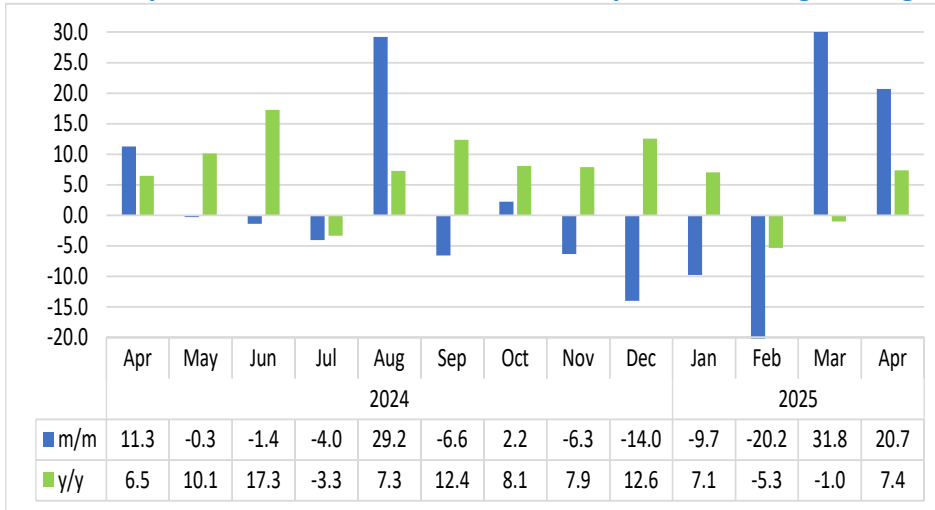
**Chart 2: Arrivals Index for Hosea Kutako Airport, Percentage Change**



- The **Passengers Movement Composite Index** (which includes international, regional, and domestic arrivals and departures of passengers at all airports) declined in April 2025 by recording an increase of 20.4 percent compared to 21.8 percent growth recorded in the preceding month. Similarly, the index rose by 6.2 percent, year-on-year (Chart 1).
- In absolute terms, a total of 102 449 passenger arrivals and departures were recorded at airport terminals across the country in April 2025. This represents an increase from 85 098 and 96 504 passengers recorded in March 2025 and April 2024, respectively.
- Hosea Kutako International Airport remained the primary hub for passenger arrivals and departures, accounting for 80.9 percent of the total passenger traffic in April 2025. It was followed by Walvis Bay Airport with 9.4 percent and Eros Airport with 5.4 percent. While the rest of the airports each contributed between 2.2 percent and 0.03 percent.

- The **Arrivals Index for Hosea Kutako International Airport** in April 2025 increased by 28.3 percent on a monthly basis, compared to a growth of 25.6 percent posted a month earlier. Furthermore, the index grew by 15.8 percent on a yearly basis (Chart 2).

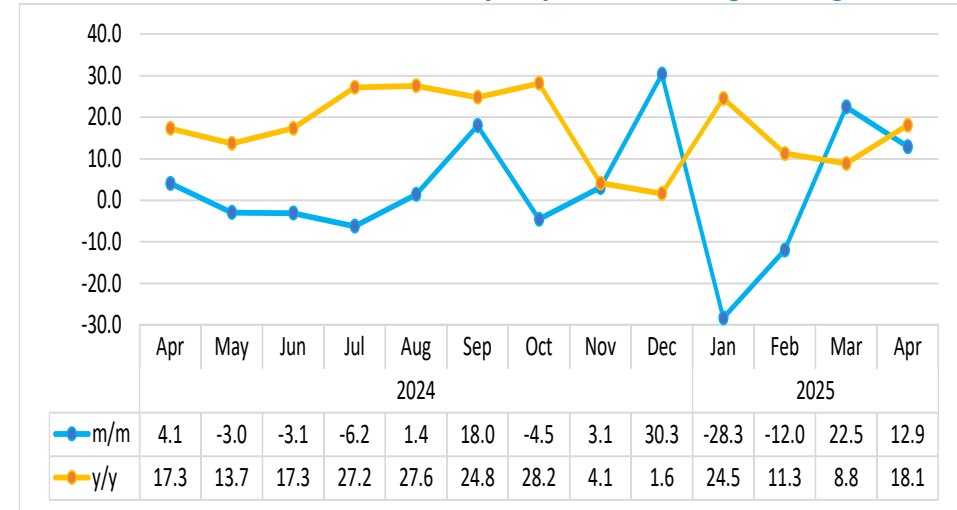
**Chart 3: Departures Index for Hosea Kutako Airport, Percentage Change<sup>1</sup>**



- The **Departures Index for Hosea Kutako International Airport** slowed down in April 2025 by recording an increase of 20.7 percent, compared to a growth of 31.8 percent registered in March 2025. In addition, the index recorded a year-on-year increase of 7.4 percent (Chart 3).

<sup>1</sup> This chart is limited to -20 percent and 30 percent for better readability.

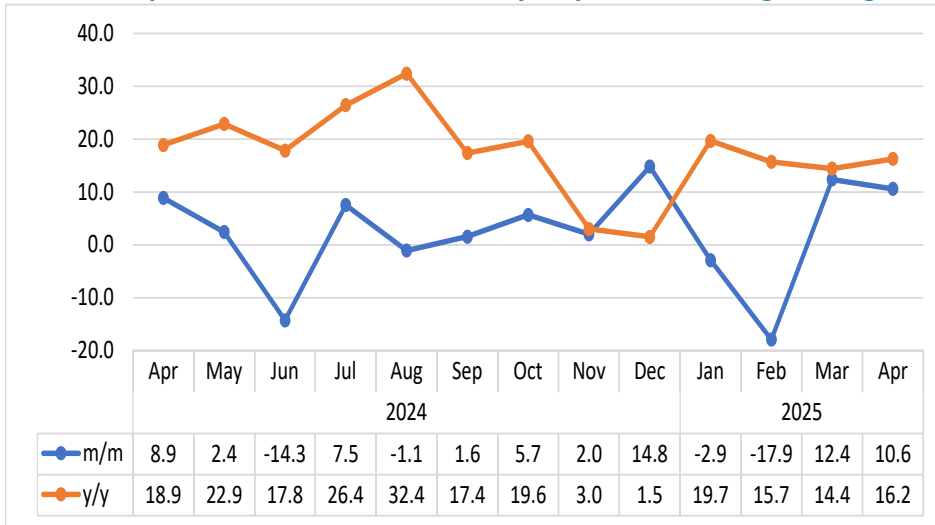
**Chart 4: Arrivals Index for Walvis Bay Airport, Percentage Change<sup>2</sup>**



- The **Arrivals Index for Walvis Bay Airport** rose by 12.9 percent on a monthly basis in April 2025, compared to a growth of 22.5 percent posted in the preceding month. Moreover, the index increased by 18.1 percent, year-on-year (Chart 4).

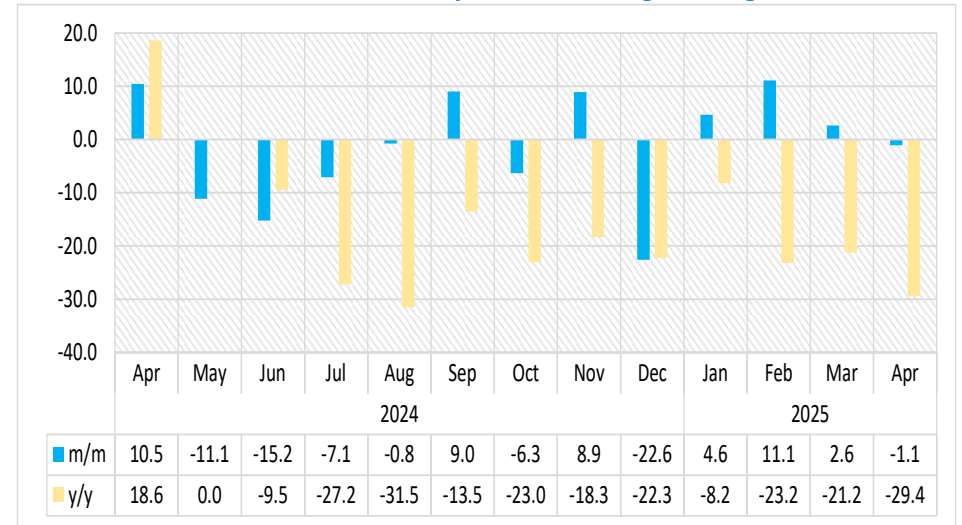
<sup>2</sup> This chart is limited to -30 percent for better readability.

**Chart 5: Departures Index for Walvis Bay Airport, Percentage Change**



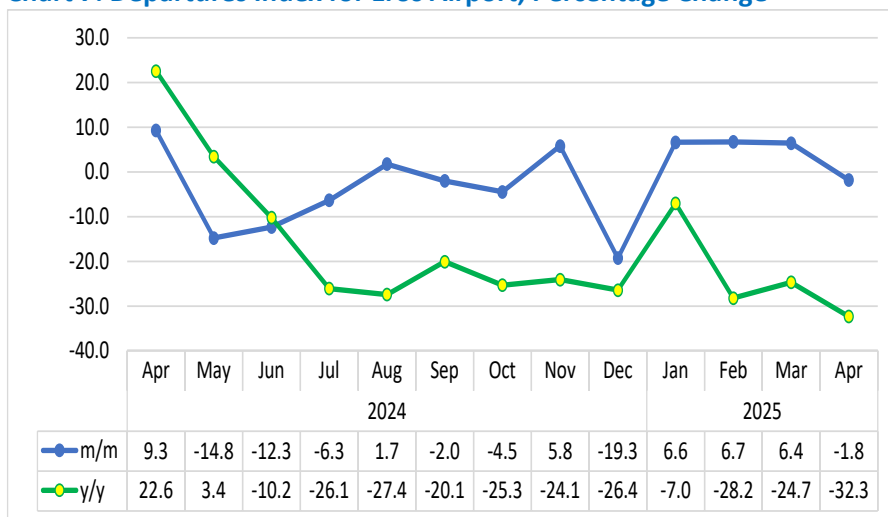
- In April 2025, the **Departures Index for Walvis Bay Airport** slowed down on a monthly basis by registering an increase of 10.6 percent, compared to a growth of 12.4 percent reported in March 2025. Additionally, the index recorded an increase of 16.2 percent on a yearly basis (Chart 5).

**Chart 6: Arrivals Index for Eros Airport, Percentage Change**



- The **Arrivals Index for Eros Airport** in April 2025 declined by 1.1 percent on a monthly basis, as opposed to the preceding month's growth of 2.6 percent. Moreover, the index reduced by 29.4 percent year-on-year (Chart 6).

**Chart 7: Departures Index for Eros Airport, Percentage Change**



- The **Departures Index for Eros Airport** declined by 1.8 percent on a monthly basis in April 2025, in contrast to a growth of 6.4 percent recorded a month earlier. Additionally, the index contracted by 32.3 percent on a yearly basis (Chart 7).

**Table 1: The indices of regional, international and domestic arrivals and departures**

Year	Month	Total Passengers	Index for (Regional, International & Domestic) Arrivals	Index for (Regional, International & Domestic) Departures
2021	Jan	28.3	26.0	30.7
	Feb	19.7	19.2	20.1
	Mar	27.0	27.5	26.5
	Apr	33.9	34.2	33.5
	May	37.5	36.8	38.3
	Jun	26.8	25.6	28.0
	Jul	21.6	22.6	20.6
	Aug	34.1	34.1	34.2
	Sep	42.4	44.8	40.0
	Oct	58.3	61.2	55.4
	Nov	58.4	61.4	55.4
	Dec	43.7	44.3	43.1
2022	Jan	55.2	41.1	69.4
	Feb	55.3	40.2	70.4
	Mar	83.5	61.8	105.5
	Apr	106.6	76.3	137.2
	May	99.5	72.1	127.3
	Jun	72.9	72.8	73.0
	Jul	94.0	101.4	86.5
	Aug	99.4	98.0	100.8
	Sep	90.4	93.0	87.8
	Oct	99.5	101.9	97.1
	Nov	88.0	83.9	92.3
	Dec	77.8	78.9	76.8
2023	Jan	68.6	66.2	70.9
	Feb	67.7	68.7	66.7
	Mar	90.4	92.5	88.3
	Apr	102.2	102.4	102.1
	May	97.1	95.3	99.0
	Jun	92.8	93.1	92.4
	Jul	113.4	119.9	106.8
	Aug	120.9	121.3	120.4
	Sep	111.6	114.4	108.8
	Oct	116.2	117.9	114.5
	Nov	109.5	106.8	112.2
	Dec	97.7	100.0	95.3

**Table 1: The indices of regional, international and domestic arrivals and departures continue...**

Year	Month	Total Passengers	Index for (Regional, International & Domestic) Arrivals	Index for (Regional, International & Domestic) Departures
2024	Jan	84.4	80.1	88.6
	Feb	85.3	86.6	84.0
	Mar	106.5	108.2	104.8
	Apr	113.1	113.8	112.3
	May	109.0	109.2	108.8
	Jun	103.2	102.0	104.4
	Jul	108.8	115.4	102.1
	Aug	123.2	121.0	125.4
	Sep	123.6	128.0	119.1
	Oct	121.4	121.1	121.6
	Nov	112.6	108.4	116.9
	Dec	104.8	106.6	103.0
2025	Jan	92.6	89.4	95.8
	Feb	81.9	83.9	79.8
	Mar	99.7	100.9	98.5
	Apr	120.0	124.7	115.3

## ***Methodology***

- Background:** The information in this report looks at both citizen and non-citizen travelers' arrivals and departures.
- Data sources:** Namibia Airports Company
- Base year:** The volumes have been referenced to 2015 data as of November 2019
- Conversion:** 1 basis point = 0.01 percent