

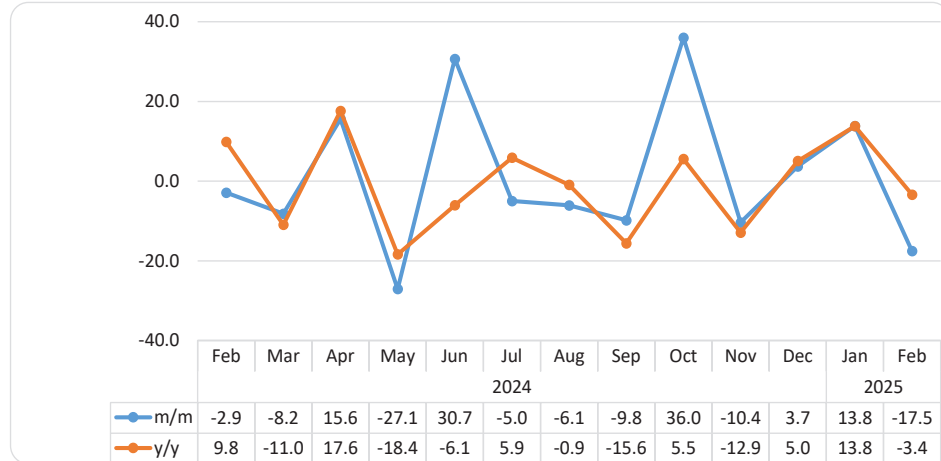


MINING

FEBRUARY 2025



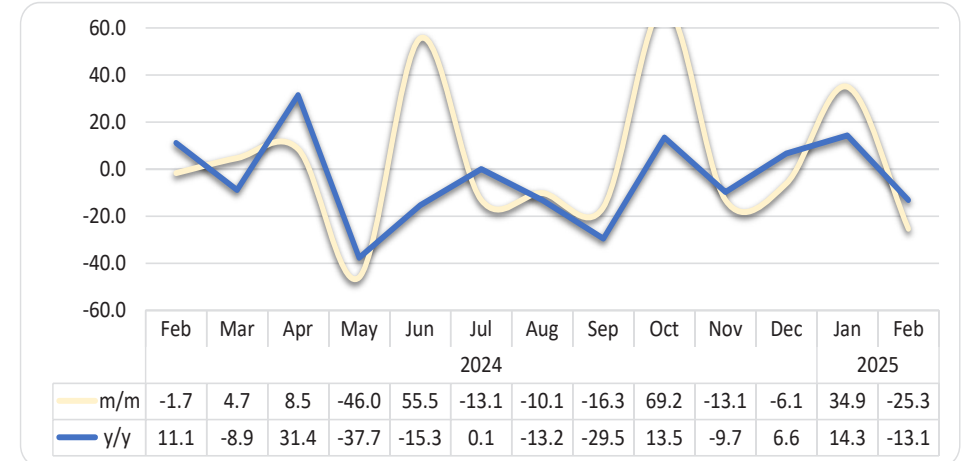
Chart 1: Mining Composite Production Index, Percentage Change



- **Mining Production Composite Index**, which includes Diamonds, Gold Bullion, Uranium and 'Zinc concentrate & contained' contracted by 17.5 percent in February 2025, in contrast to a growth of 13.8 percent recorded a month earlier. Similarly, the index declined by 3.4 percent year-on-year (Chart 1).
- The monthly decline is driven by a reduction in the production levels of Diamonds, Uranium and Gold Bullion. However, production of 'Zinc concentrate & contained' saw an increase during the review period.

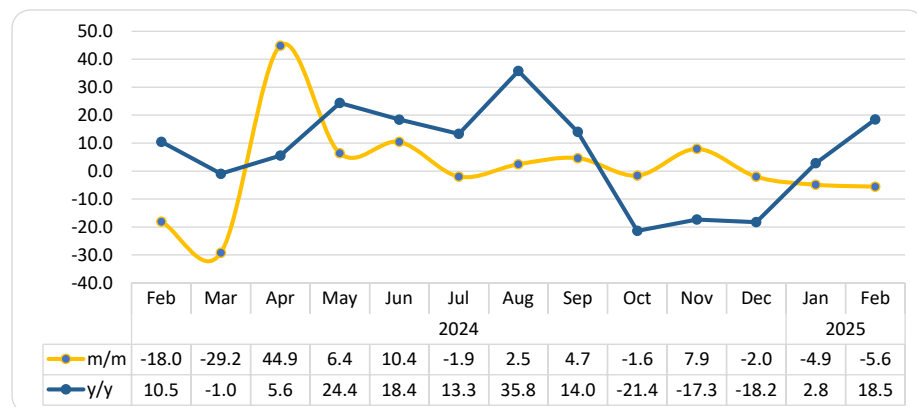
¹ This chart is limited to 60 percent for better readability.

Chart 2: Diamonds Production Index, Percentage Change ¹



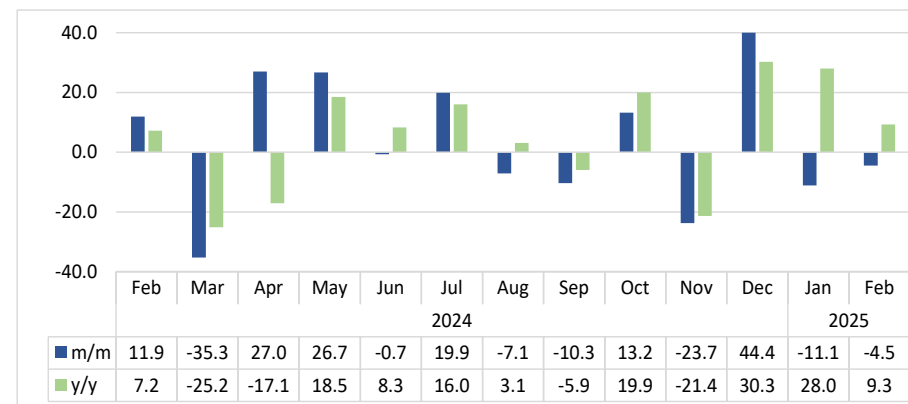
- **Diamond Production Index** declined by 25.3 percent in February 2025, in contrast to a growth of 34.9 percent witnessed in the previous month. Furthermore, the index contracted by 13.1 percent year-on-year (Chart 2).

Chart 3: Gold Bullion Production Index, Percentage Change



- **Gold Bullion Production Index** contracted by 5.6 percent in February 2025, compared to a contraction of 4.9 percent registered in January 2025. On the other hand, the index grew by 18.5 percent year-on-year (Chart 3).

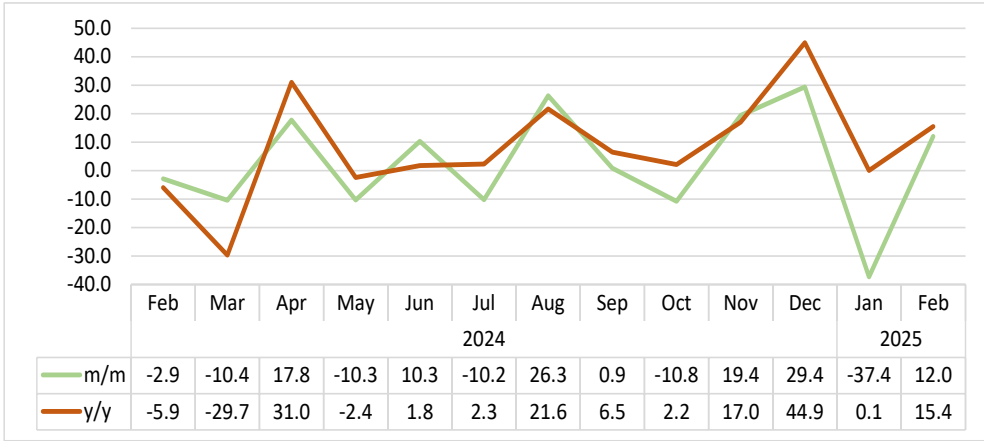
Chart 4: Uranium Production Index, Percentage Change²



- **Uranium Production Index** recovered in February 2025 by recording a decline of 4.5 percent, compared to a contraction of 11.1 percent posted in January 2025. However, the index registered a year-on-year increase of 9.3 percent (Chart 4).

² This chart is limited to 40 percent for better readability.

Chart 5: 'Zinc Concentrate & Contained' Production Index, Percentage Change



- **'Zinc concentrate & contained' Production Index** increased by 12.0 percent in February 2025, in contrast to a contraction of 37.4 percent recorded a month earlier. Additionally, the index grew by 15.4 percent year-on-year (Chart 5).

Table 1: Mining Composite Index of the Selected Minerals

Year	Month	Diamonds	Uranium	Zinc concentrate & contained	Gold Bullion	Composite Index
2021	Jan	90.2	173.3	72.2	70.5	94.8
	Feb	76.2	194.7	60.0	63.5	86.2
	Mar	64.6	162.3	69.2	66.5	75.8
	Apr	70.2	120.2	70.5	76.0	76.4
	May	79.9	198.6	90.9	67.8	91.3
	Jun	80.2	150.7	87.3	69.8	86.2
	Jul	91.5	163.2	83.5	119.7	103.5
	Aug	85.9	169.6	93.6	163.0	108.6
	Sep	93.6	210.4	91.7	164.5	118.5
	Oct	95.1	182.1	102.1	182.6	119.9
	Nov	100.2	195.9	91.4	164.9	121.2
	Dec	69.8	215.9	90.5	166.5	103.7
2022	Jan	101.0	83.6	73.1	110.8	98.7
	Feb	90.1	197.2	75.7	81.6	99.5
	Mar	117.4	205.9	82.5	98.1	121.6
	Apr	114.0	136.9	73.6	83.6	108.6
	May	120.4	160.9	70.7	108.0	119.6
	Jun	148.7	168.6	82.3	84.1	135.5
	Jul	129.4	220.6	77.8	85.8	128.8
	Aug	121.8	205.3	69.5	97.2	123.6
	Sep	111.2	195.2	94.5	120.8	120.9
	Oct	119.0	146.1	99.2	134.8	123.1
	Nov	149.2	180.1	88.4	136.0	146.5
	Dec	131.9	184.0	94.7	209.8	148.7
2023	Jan	140.0	182.3	83.8	142.2	141.6
	Feb	126.3	204.6	75.8	123.9	131.5
	Mar	161.2	189.6	90.8	97.8	148.9
	Apr	121.3	217.3	57.4	133.0	130.4
	May	138.2	192.8	69.2	120.1	137.0
	Jun	158.2	209.4	73.1	139.3	155.5
	Jul	116.4	234.4	65.3	142.7	131.1
	Aug	120.5	245.0	69.3	122.0	131.6
	Sep	124.2	240.7	79.9	152.1	139.3
	Oct	130.6	213.7	74.3	217.1	151.5
	Nov	142.7	248.7	77.4	222.9	164.6
	Dec	113.5	216.7	80.9	220.8	141.5

Table 1: Mining Composite Index of the Selected Minerals continued...

Year	Month	Diamonds	Uranium	Zinc concentrate & contained	Gold Bullion	Composite Index
2024	Jan	142.8	196.0	73.4	167.1	148.7
	Feb	140.3	219.3	71.3	136.9	144.4
	Mar	146.9	141.8	63.9	96.9	132.6
	Apr	159.4	180.2	75.2	140.4	153.3
	May	86.2	228.3	67.5	149.4	111.8
	Jun	134.0	226.8	74.4	164.9	146.1
	Jul	116.5	271.9	66.8	161.7	138.8
	Aug	104.6	252.6	84.4	165.7	130.4
	Sep	87.6	226.4	85.1	173.4	117.6
	Oct	148.2	256.3	75.9	170.7	159.9
	Nov	128.9	195.5	90.6	184.2	143.3
	Dec	121.0	282.3	117.3	180.5	148.7
2025	Jan	163.2	250.9	73.5	171.8	169.2
	Feb	121.9	239.6	82.3	162.2	139.5

Definitions

- **Diamond:** Is a very hard mineral that is in the form of bars of carbon and is used, especially in Jewellery.
- **Gold Bullion:** Is a gold or silver in bulk before coining or valued by weight which means gold bullion is gold valued purify and weights.
- **Zinc:** Is a metallic element with a blue-white colour, used as a protective covering for iron and to make metal alloys like nickel silver.
- **Uranium:** Is a Silver-heavy radioactive polyvalent metallic element that is found especially in uraninite and exists naturally as a mixture of mostly no fissionable elements.

Methodology Notes and Data Sources

- Data Sources** : Data sourced from Bank of Namibia for the period starting from January 2019.
- Base year** : The Mining sectoral report is harmonised with the quarterly and annual National Accounts base year 2015.
- Index calculations** : The index of mining production was weighted using the value-added data of 2015. The index is then calculated as a ratio of the volume of a specific component in a specific month to the total volume of that component in 2015.
- Conversion** : 1 basis point = 0.01 percent