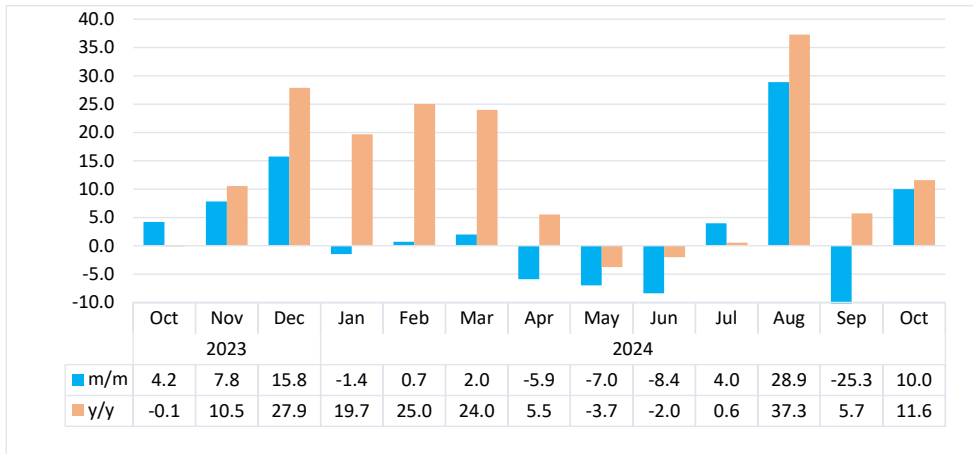


ELECTRICITY

OCTOBER 2024

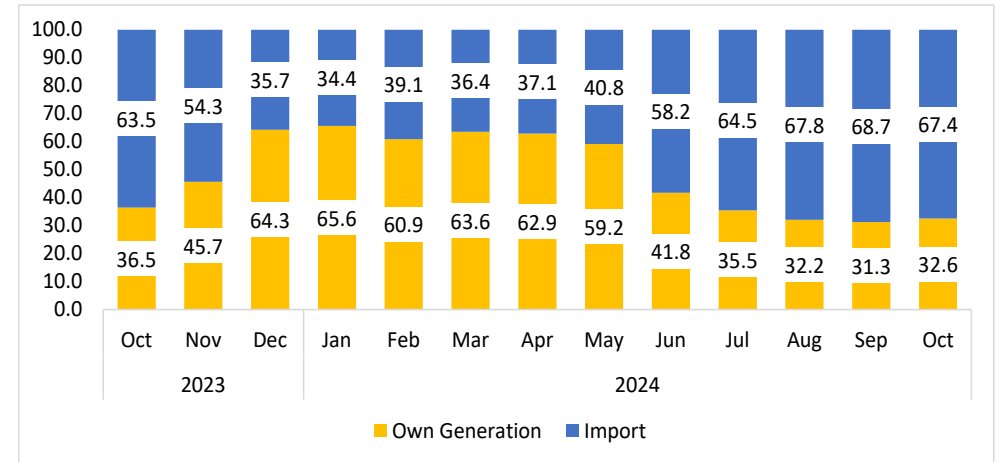


Chart 1: Electricity Sources Composite Index, Percentage Change



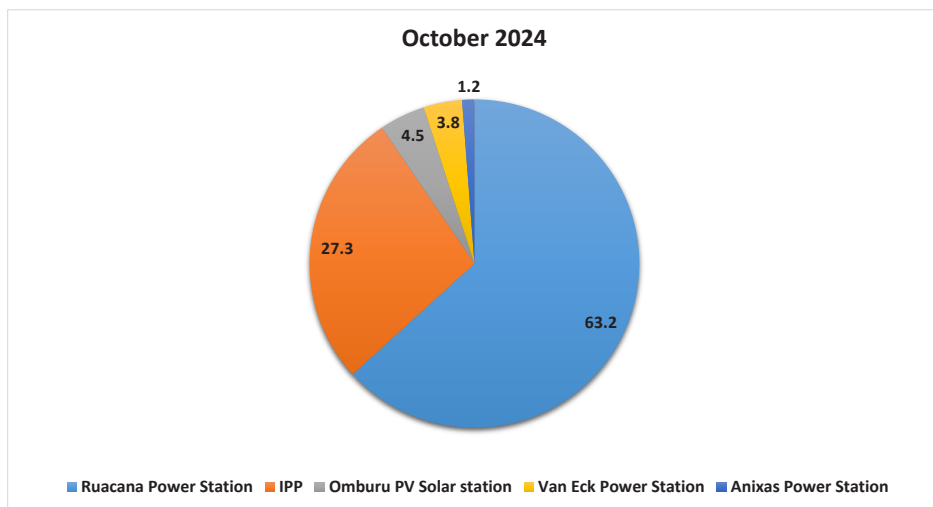
- The **Electricity Sources Composite Index**, which includes own generation (local production) recovered an increase of 10.0 percent during the month of October 2024, in contrast to a decline of 25.3 percent experienced in the previous month. Furthermore, the index saw an increase of 11.6 percent on an annual basis (Chart 1).

Chart 2: Share of Sources of Electricity, in Percent



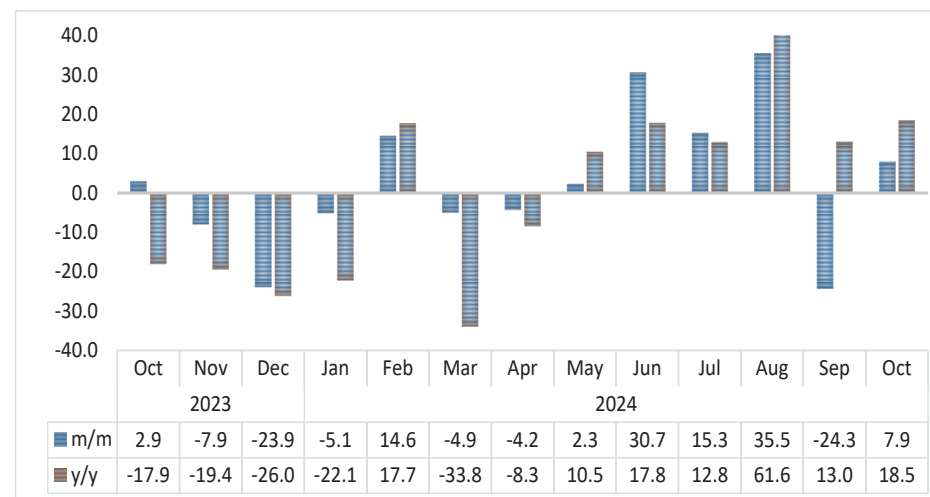
- In October 2024, the total electricity demand reached 401 058 MWh, higher than 364 632 MWh demanded in the preceding month and 359 385 MWh recorded in the corresponding month of 2023.
- Own generation contributed 32.6 percent (130 570 MWh) of the total electricity demand, while imports made up the largest share of 67.4 percent (270 488 MWh) in October 2024. A similar trend was observed in October 2023, where imports accounted for a larger share of the total electricity demanded than own generation.

Chart 3: Share of Electricity for Own Generation, in Percent



- In October 2024, the total electricity generated locally was 130 570 MWh. Ruacana Power Station produced the largest share, contributing 63.2 percent (82 551 MWh), followed by Independent Power Producers (IPP) with 27.3 percent (35 641 MWh), and Omburu PV Solar Station, which generated 4.5 percent (5 874 MWh) of local production.
- Among the top five contributors to local electricity generation for the month, Van Eck Power Station ranked fourth with 3.8 percent (4 931 MWh), and Anixas Power Station ranked fifth, contributing 1.2 percent (1 572 MWh) (Chart 3).

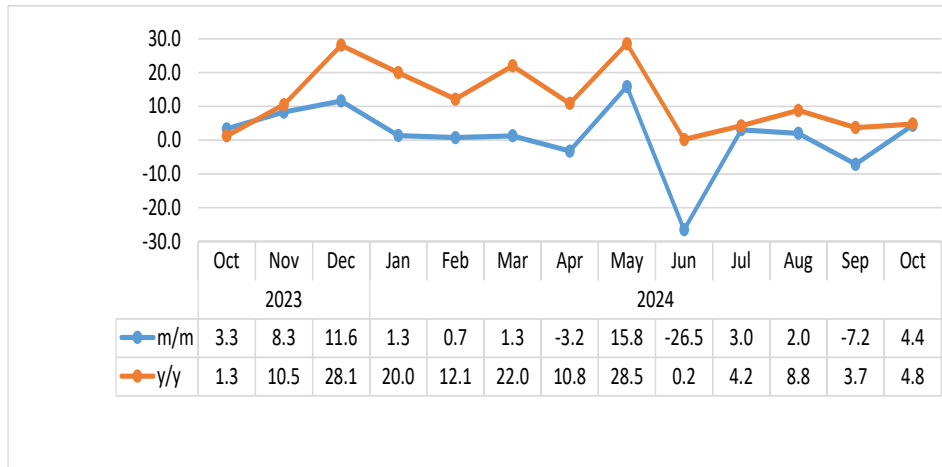
Chart 4: Electricity Import Index, Percentage Change¹



- The **Electricity Imports Index** for October 2024 grew by 7.9 percent, a recovery from a decline of 24.3 percent recorded in the previous month. Moreover, the index increased by 18.5 percent year-on-year (Chart 4).
- A total of 270 488 MWh of electricity was imported in October 2024. The largest contributor to total electricity imported was South Africa, accounting for 45.3 percent, followed by Zambia with 25.7 percent, Zimbabwe taking the third position with 15.2 percent contribution. While Day Ahead Market - SAPP and Eskom Orange River, in fourth and fifth positions with 9.8 percent and 4.0 percent, respectively.

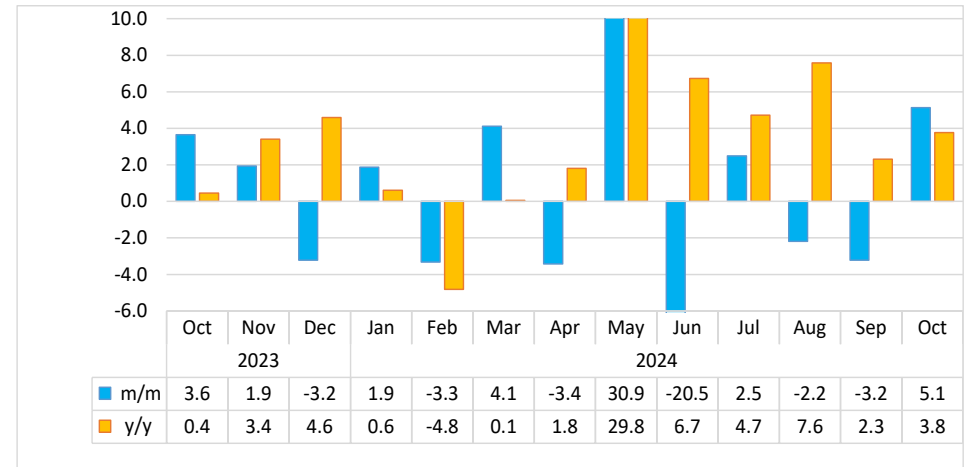
¹ This chart is limited to 40 percent for better readability.

Chart 5: Electricity Sales Composite Index, Percentage Change



- The **Electricity Sales Composite Index** for October 2024 rebounded after registering an increase of 4.4 percent, recovering from 7.2 percent decline recorded in the preceding month. Additionally, the index increased by 4.8 percent on an annual basis (Chart 5).
- Total electricity sales during the month of October 2024 amounted to 334 907 MWh, compared to 320 875 MWh sold in the previous month, and 319 668 MWh sold in the corresponding month of 2023.

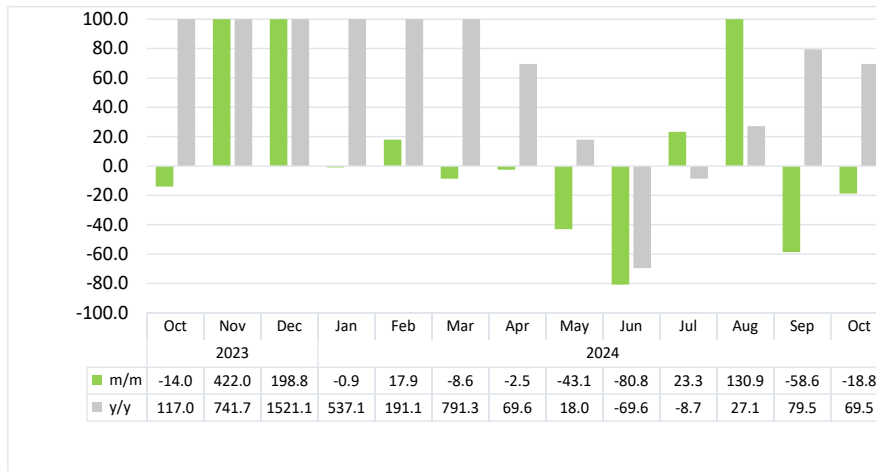
Chart 6: Electricity Domestic Sales Index, Percentage Change²



- The **Domestic Electricity Sales Index** grew by 5.1 percent in October 2024, recovering from 3.2 percent decline recorded a month earlier. Furthermore, the index increased by 3.8 percent on an annual basis (Chart 6).
- Total electricity sold domestically in October 2024 amounted to 326 678 MWh, compared to 310 744 MWh sold in the preceding month, and 314 812 MWh sold in the corresponding month of 2023. Most of the electricity in the period under review was sold to Redistributors - LPU (65.7%), followed by Mines (26.2%), Eskom Orange River (3.3%), and Farms - Main Supply (1.2%).

² This chart is limited to 10 percent for better readability.

Chart 7: Electricity Export Sales Index, Percentage Change³



- The **Electricity Export Sales Index** declined by 18.8 percent month-on-month in October 2024, a rebound when compared to a decline of 58.6 percent recorded in the previous month. However, the index increased by 69.5 percent year-on-year (Chart 7).
- During the review period, Namibia exported 8 229 MWh of electricity, with 71.1 percent supplied to STEM Sales - SAPP. Botswana was the second-largest export market for Namibia’s electricity, accounting for 15.2 percent, followed by South Africa (7.3%) and Angola (6.3%).

³ This chart is limited to 100 percent for better readability.

Table 1: Electricity Sources in MWH

Year	Month	Own generated	Import
2020	Jan	249,327	171,655
	Feb	260,165	171,759
	Mar	268,742	252,506
	Apr	270,785	136,187
	May	234,883	176,429
	Jun	145,495	226,701
	Jul	156,692	227,982
	Aug	176,845	209,579
	Sep	155,062	213,956
	Oct	139,242	248,759
	Nov	110,168	255,038
	Dec	140,822	243,109
2021	Jan	98,191	255,534
	Feb	66,648	238,395
	Mar	65,547	252,906
	Apr	95,326	250,225
	May	95,027	251,119
	Jun	64,155	265,577
	Jul	48,192	297,297
	Aug	43,152	301,495
	Sep	50,664	290,922
	Oct	61,058	290,893
	Nov	76,294	270,322
	Dec	89,054	263,899
2022	Jan	93,044	252,026
	Feb	65,362	255,286
	Mar	139,261	221,067
	Apr	265,053	117,300
	May	152,261	204,296
	Jun	98,405	247,188
	Jul	100,515	253,554
	Aug	101,360	252,948
	Sep	87,212	259,414
	Oct	81,558	278,245
	Nov	89,789	260,750
	Dec	134,559	216,217

Table 1: Electricity Sources in MWH Continue...

Year	Month	Own generated	Import
2023	Jan	174,396	195,004
	Feb	208,340	147,774
	Mar	116,256	250,059
	Apr	232,039	172,956
	May	266,144	146,833
	Jun	191,672	179,945
	Jul	160,051	216,521
	Aug	150,729	204,813
	Sept	123,030	221,823
	Oct	131,052	228,332
	Nov	177,168	210,293
	Dec	288,544	160,000
2024	Jan	290,188	151,871
	Feb	271,269	173,999
	Mar	288,783	165,456
	Apr	268,882	158,522
	May	235,280	162,218
	Jun	152,224	211,944
	Jul	134,370	244,343
	Aug	157,001	331,071
	Sep	114,040	250,592
	Oct	130,570	270,488

Table 2: Electricity sources index (2015=100)

Year	Month	Own generated Index	Import Index	Electricity Sources Composite Index
2020	Jan	225.7	72.1	120.7
	Feb	235.5	72.1	123.9
	Mar	243.2	106.0	149.5
	Apr	245.1	57.2	116.7
	May	212.6	74.1	117.9
	Jun	131.7	95.2	106.7
	Jul	141.8	95.7	110.3
	Aug	160.1	88.0	110.8
	Sep	140.3	89.8	105.8
	Oct	126.0	104.4	111.3
	Nov	99.7	107.0	104.7
	Dec	127.5	102.0	110.1
2021	Jan	88.9	107.3	101.4
	Feb	60.3	100.1	87.5
	Mar	59.3	106.2	91.3
	Apr	86.3	105.0	99.1
	May	86.0	105.4	99.3
	Jun	58.1	111.5	94.6
	Jul	43.6	124.8	99.1
	Aug	39.1	126.5	98.8
	Sep	45.9	122.1	98.0
	Oct	55.3	122.1	100.9
	Nov	69.1	113.5	99.4
	Dec	80.6	110.8	101.2
2022	Jan	84.2	105.8	99.0
	Feb	59.2	107.2	91.9
	Mar	126.0	92.8	103.3
	Apr	239.9	49.2	109.6
	May	137.8	85.8	102.2
	Jun	89.1	103.8	99.1
	Jul	91.0	106.4	101.5
	Aug	91.7	106.2	101.6
	Sep	78.9	108.9	99.4
	Oct	73.8	116.8	103.2
	Nov	81.3	109.4	100.5
	Dec	121.8	90.8	100.6

Table 2: Electricity sources index (2015=100) Continue...

Year	Month	Own generated Index	Import Index	Electricity Sources Composite Index
2023	Jan	157.8	81.9	105.9
	Feb	188.6	62.0	102.1
	Mar	105.2	105.0	105.0
	Apr	210.0	72.6	116.1
	May	240.9	61.6	118.4
	Jun	173.5	75.5	106.6
	Jul	144.9	90.9	108.0
	Aug	136.4	86.0	102.0
	Sep	111.4	93.1	98.9
	Oct	118.6	95.8	103.1
	Nov	160.4	88.3	111.1
	Dec	261.2	67.2	128.6
2024	Jan	262.6	63.7	126.8
	Feb	245.5	73.0	127.7
	Mar	261.4	69.4	130.3
	Apr	243.4	66.5	122.6
	May	213.0	68.1	114.0
	Jun	137.8	89.0	104.4
	Jul	121.6	102.6	108.6
	Aug	142.1	139.0	140.0
	Sep	103.2	105.2	104.6
	Oct	118.2	113.5	115.0

Table 3: Electricity Sales in MWH

Year	Month	Domestic Sales	Export Sales
2020	Jan	293,012	9,741
	Feb	263,685	9,854
	Mar	345,424	9,445
	Apr	261,738	9,029
	May	268,139	8,600
	Jun	279,446	9,359
	Jul	289,489	9,704
	Aug	295,368	9,809
	Sep	287,338	9,895
	Oct	299,602	10,497
	Nov	282,311	10,674
	Dec	302,423	10,544
2021	Jan	298,848	9,608
	Feb	271,421	8,931
	Mar	290,056	9,164
	Apr	284,527	9,089
	May	297,400	8,915
	Jun	284,881	9,015
	Jul	297,535	8,978
	Aug	296,030	8,979
	Sep	293,074	9,668
	Oct	301,575	9,917
	Nov	299,292	10,346
	Dec	294,724	10,964
2022	Jan	299,509	13,339
	Feb	277,413	9,566
	Mar	305,817	18,501
	Apr	282,149	35,519
	May	288,780	22,849
	Jun	297,285	10,415
	Jul	307,537	7,535
	Aug	303,106	11,149
	Sep	303,158	4,507
	Oct	313,408	2,238
	Nov	310,318	3,011
	Dec	296,953	4,671

Table 3: Electricity Sales in MWH Continue...

Year	Month	Domestic Sales	Export Sales
2023	Jan	314,507	11,777
	Feb	321,345	30,395
	Mar	318,289	9,072
	Apr	302,068	46,496
	May	310,238	38,042
	Jun	300,076	28,321
	Jul	313,495	11,618
	Aug	298,484	19,279
	Sep	303,727	5,645
	Oct	314,812	4,856
	Nov	320,895	25,344
	Dec	310,580	75,727
2024	Jan	316,402	75,037
	Feb	305,879	88,484
	Mar	318,457	80,859
	Apr	307,526	78,837
	May	402,701	44,885
	Jun	320,287	8,604
	Jul	328,280	10,607
	Aug	321,103	24,496
	Sep	310,744	10,131
	Oct	326,678	8,229

Table 4: Electricity sales index

Year	Month	Domestic Sales Index	Export Index	Electricity Sales Composite Index
2020	Jan	108.9	125.2	109.3
	Feb	98.0	126.7	98.8
	Mar	128.4	121.4	128.2
	Apr	97.3	116.1	97.8
	May	99.6	110.5	99.9
	Jun	103.8	120.3	104.3
	Jul	107.6	124.7	108.1
	Aug	109.8	126.1	110.2
	Sep	106.8	127.2	107.4
	Oct	126.9	134.9	127.1
	Nov	115.1	137.2	115.7
	Dec	112.6	135.5	113.2
2021	Jan	111.2	123.5	111.6
	Feb	100.9	114.8	101.3
	Mar	107.8	117.8	108.1
	Apr	105.7	116.8	106.0
	May	110.5	114.6	110.6
	Jun	105.9	115.9	106.1
	Jul	110.6	115.4	110.7
	Aug	110.0	115.4	110.2
	Sep	108.9	124.3	109.3
	Oct	112.1	127.5	112.5
	Nov	111.2	133.0	111.8
	Dec	109.5	140.9	110.4
2022	Jan	111.3	171.5	113.0
	Feb	103.1	123.0	103.6
	Mar	113.6	237.8	117.1
	Apr	104.8	456.5	114.7
	May	107.3	293.7	112.5
	Jun	110.5	133.9	111.1
	Jul	114.3	96.8	113.8
	Aug	112.6	143.3	113.5
	Sep	112.7	57.9	111.1
	Oct	116.5	28.8	114.0
	Nov	115.3	38.7	113.2
	Dec	110.4	60.0	108.9

Table 4: Electricity sales index Continue...

Year	Month	Domestic Sales Index	Export Index	Electricity Sales Composite Index
2023	Jan	116.9	151.4	117.8
	Feb	119.4	390.7	127.0
	Mar	118.3	116.6	118.2
	Apr	112.3	597.6	125.9
	May	115.3	489.0	125.8
	Jun	111.5	364.0	118.6
	Jul	116.5	149.3	117.4
	Aug	110.9	247.8	114.8
	Sep	112.9	72.6	111.7
	Oct	117.0	62.4	115.5
	Nov	119.2	325.8	125.1
	Dec	115.4	973.4	139.5
2024	Jan	117.6	964.5	141.4
	Feb	113.7	1,137.3	142.4
	Mar	118.3	1,039.3	144.2
	Apr	114.3	1,013.3	139.5
	May	149.6	576.9	161.7
	Jun	119.0	110.6	118.8
	Jul	122.0	136.3	122.4
	Aug	119.3	314.9	124.8
	Sep	115.5	130.2	115.9
	Oct	121.4	105.8	121.0

Methodology : Graphical and tabular analysis

Data Sources : The data source for the volume of electricity is sourced from Nam-power. These are data on domestic and export sale, Own Generation and import sources. The Production is in kilowatts per hour (kWh) for all the variables.

Index calculation: The index of sales and sources weighted uses the volume data of 2015.

Conversion : 1 basis point = 0.01 percent