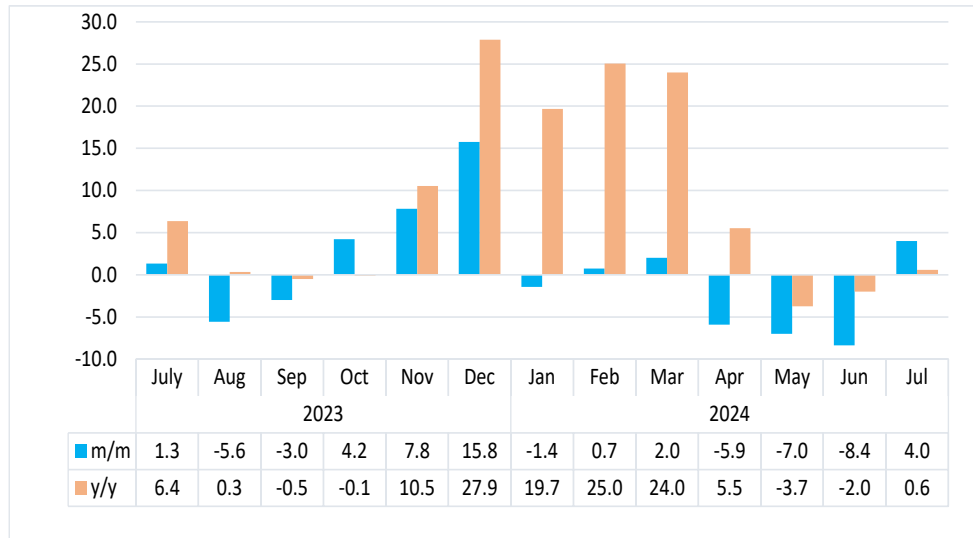


# ELECTRICITY

JULY 2024

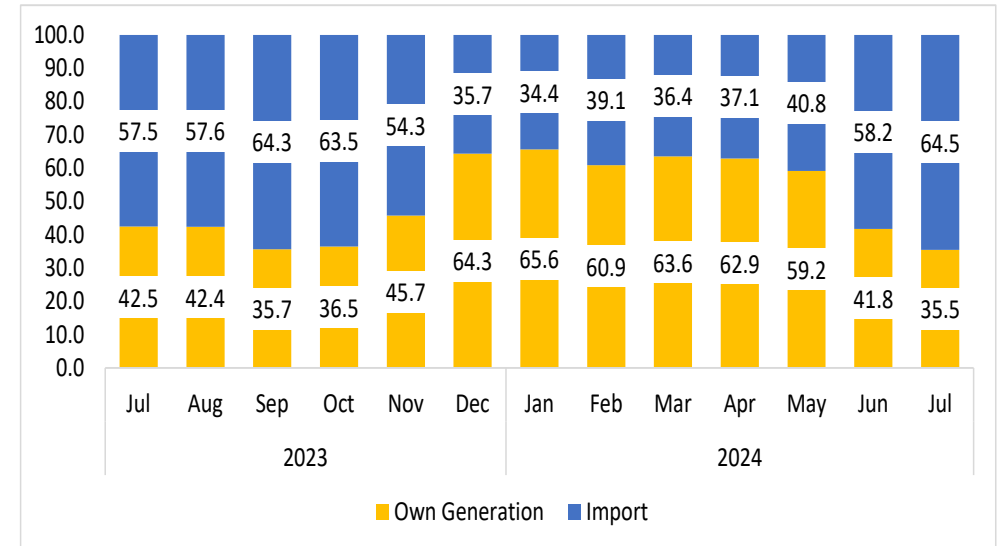


**Chart 1: Electricity Sources Composite Index, Percentage Change**



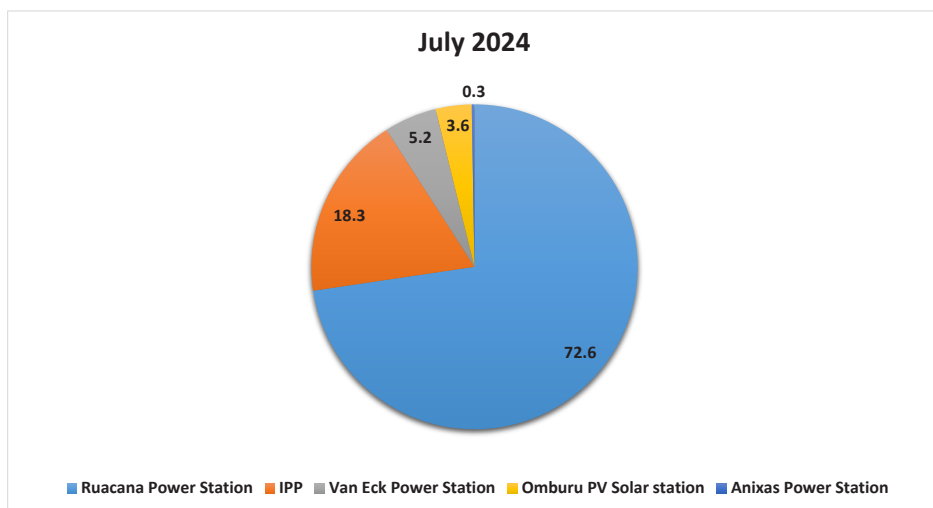
- The **Electricity Sources Composite Index** recorded an increase of 4.0 percent during the month of July 2024, compared to a reduction of 8.4 percent that was posted a month earlier. Similarly, the index rose slightly by 0.6 percent year-on-year (Chart 1).

**Chart 2: Share of Sources of Electricity, in Percent**



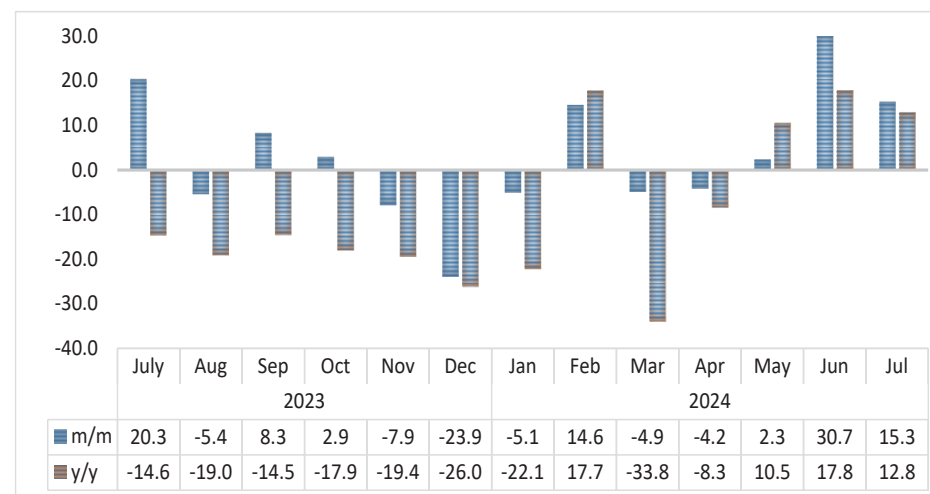
- During the month of July 2024, the aggregate demand for electricity stood at 378 714 MWh, an increase from 364 167 MWh and 376 572 MWh that was recorded in the preceding month and the corresponding month of 2023, respectively.
- Own generation accounted for 35.5 percent (134 370 MWh), while import constituted 64.5 percent (244 343 MWh) of total demand during the month of July 2024. A similar pattern was observed in the corresponding month of 2023, where imports contributed more of the total electricity demanded than own generation.

Chart 3: Share of Electricity for Own Generation, in Percent



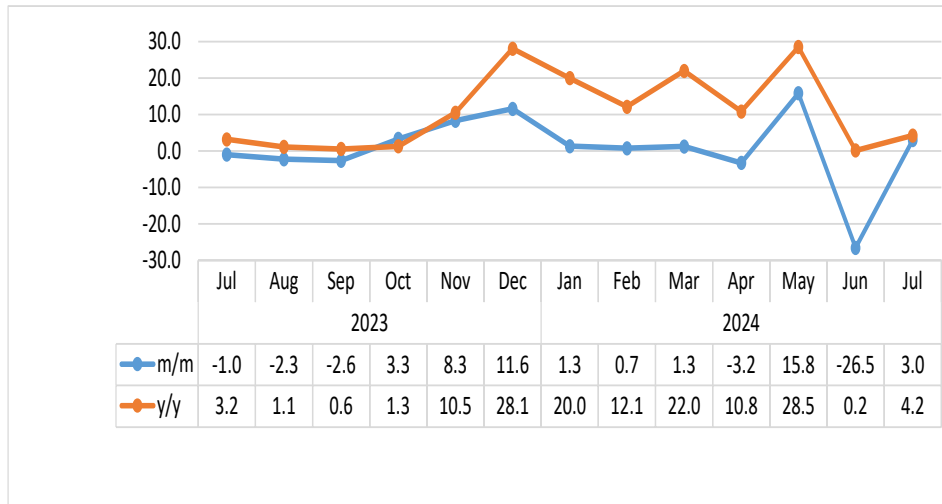
- In July 2024, electricity generated locally amounted to 134 370 MWh. Ruacana Power Station contributed the highest share of electricity generated locally accounting for 72.6 percent (97 614 MWh), while Independent Power Producers (IPP) and Van Eck Power Station generated 18.3 percent (24 590 MWh) and 5.2 percent (7 004 MWh) of local production, respectively (Chart 3).

Chart 4: Electricity Import Index, Percentage Change



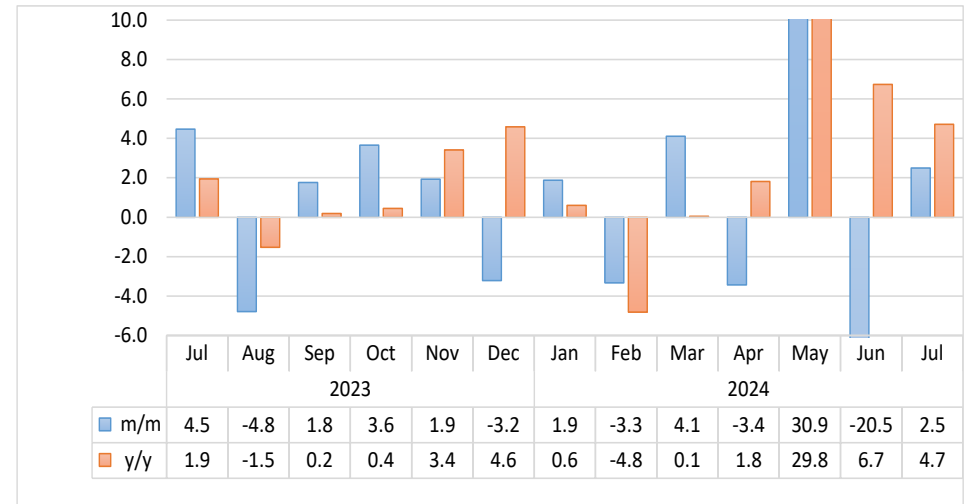
- The **Electricity Import Index** for July 2024 slowed down on a monthly basis registering an increase of 15.3 percent, compared to a growth of 30.7 percent that was posted a month earlier. Furthermore, the index grew by 12.8 percent year-on-year (Chart 4).
- In July 2024, a total of 244 343 MWh of electricity was imported. The largest share of electricity was imported from South Africa with 43.4 percent, followed by Zambia with 36.4 percent, Zimbabwe (15.7%), while Eskom Orange River and Day Ahead Market contributed 4.3 percent and 0.1 percent, respectively.

**Chart 5: Electricity Sales Composite Index, Percentage Change**



- The **Electricity Sales Composite Index** for July 2024 rebounded on a monthly basis registering an increase of 3.0 percent, in contrast to a reduction of 26.5 percent posted in the previous month. Moreover, the index grew by 4.2 percent on an annual basis (Chart 5).
- Total electricity sales during the month of July 2024 amounted to 338 886 MWh, an increase from 328 891 MWh and 325 112 MWh that was sold in the preceding month and the corresponding month of 2023, respectively.

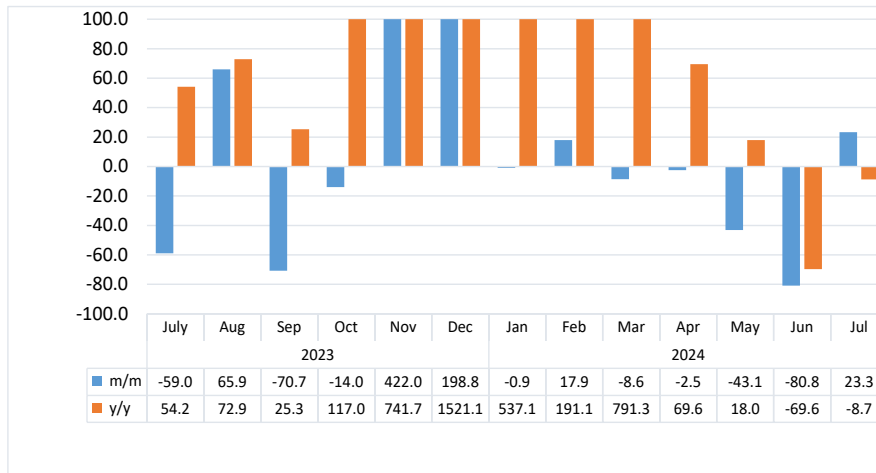
**Chart 6: Electricity Domestic Sales Index, Percentage Change<sup>1</sup>**



- The **Electricity Domestic Sales Index** for July 2024 increased by 2.5 percent on a monthly basis, as opposed to a decline of 20.5 percent posted in the preceding month. Similarly, the index increased by 4.7 percent year-on-year (Chart 6).
- The total electricity sold locally during the month of July 2024 increased to 328 280 MWh, from 320 287 MWh and 313 495 MWh that was sold locally a month earlier and in the corresponding month of 2023, respectively. Most of the electricity was mainly sold to Redistributors - LPU (64.9%) and Mines (27.8%) during the period under review.

<sup>1</sup> This chart is limited to 10 percent for better readability.

**Chart 7: Electricity Export Sales Index, Percentage Change<sup>2</sup>**



- The **Electricity Export Sales Index** on a monthly basis increased by 23.3 percent during the month of July 2024, a contrast to a reduction of 80.8 percent registered a month earlier. Conversely, the index declined by 8.7 percent year-on-year (Chart 7).
- During the period under review, Namibia exported 10 607 MWh of electricity, of which 79.0 percent was supplied to STEM Sales-SAPP, followed by Botswana (11.6%) in the second place, while 5.5 percent and 3.9 percent was exported to South Africa and Angola, respectively.

<sup>2</sup> This chart is limited to 100 percent for better readability.

**Table 1: Electricity Sources in MWH**

| Year | Month | Own generated | Import  |
|------|-------|---------------|---------|
| 2020 | Jan   | 249,327       | 171,655 |
|      | Feb   | 260,165       | 171,759 |
|      | Mar   | 268,742       | 252,506 |
|      | Apr   | 270,785       | 136,187 |
|      | May   | 234,883       | 176,429 |
|      | Jun   | 145,495       | 226,701 |
|      | Jul   | 156,692       | 227,982 |
|      | Aug   | 176,845       | 209,579 |
|      | Sep   | 155,062       | 213,956 |
|      | Oct   | 139,242       | 248,759 |
|      | Nov   | 110,168       | 255,038 |
|      | Dec   | 140,822       | 243,109 |
| 2021 | Jan   | 98,191        | 255,534 |
|      | Feb   | 66,648        | 238,395 |
|      | Mar   | 65,547        | 252,906 |
|      | Apr   | 95,326        | 250,225 |
|      | May   | 95,027        | 251,119 |
|      | Jun   | 64,155        | 265,577 |
|      | Jul   | 48,192        | 297,297 |
|      | Aug   | 43,152        | 301,495 |
|      | Sep   | 50,664        | 290,922 |
|      | Oct   | 61,058        | 290,893 |
|      | Nov   | 76,294        | 270,322 |
|      | Dec   | 89,054        | 263,899 |
| 2022 | Jan   | 93,044        | 252,026 |
|      | Feb   | 65,362        | 255,286 |
|      | Mar   | 139,261       | 221,067 |
|      | Apr   | 265,053       | 117,300 |
|      | May   | 152,261       | 204,296 |
|      | Jun   | 98,405        | 247,188 |
|      | Jul   | 100,515       | 253,554 |
|      | Aug   | 101,360       | 252,948 |
|      | Sep   | 87,212        | 259,414 |
|      | Oct   | 81,558        | 278,245 |
|      | Nov   | 89,789        | 260,750 |
|      | Dec   | 134,559       | 216,217 |

**Table 1: Electricity Sources in MWH Continue...**

| Year | Month | Own generated | Import  |
|------|-------|---------------|---------|
| 2023 | Jan   | 174,396       | 195,004 |
|      | Feb   | 208,340       | 147,774 |
|      | Mar   | 116,256       | 250,059 |
|      | Apr   | 232,039       | 172,956 |
|      | May   | 266,144       | 146,833 |
|      | Jun   | 191,672       | 179,945 |
|      | Jul   | 160,051       | 216,521 |
|      | Aug   | 150,729       | 204,813 |
|      | Sept  | 123,030       | 221,823 |
|      | Oct   | 131,052       | 228,332 |
|      | Nov   | 177,168       | 210,293 |
|      | Dec   | 288,544       | 160,000 |
| 2024 | Jan   | 290,188       | 151,871 |
|      | Feb   | 271,269       | 173,999 |
|      | Mar   | 288,783       | 165,456 |
|      | Apr   | 268,882       | 158,522 |
|      | May   | 235,280       | 162,218 |
|      | Jun   | 152,224       | 211,944 |
|      | Jul   | 134,370       | 244,343 |

**Table 2: Electricity sources index (2015=100)**

| Year | Month | Own generated Index | Import Index | Electricity Sources Composite Index |
|------|-------|---------------------|--------------|-------------------------------------|
| 2020 | Jan   | 225.7               | 72.1         | <b>120.7</b>                        |
|      | Feb   | 235.5               | 72.1         | <b>123.9</b>                        |
|      | Mar   | 243.2               | 106.0        | <b>149.5</b>                        |
|      | Apr   | 245.1               | 57.2         | <b>116.7</b>                        |
|      | May   | 212.6               | 74.1         | <b>117.9</b>                        |
|      | Jun   | 131.7               | 95.2         | <b>106.7</b>                        |
|      | Jul   | 141.8               | 95.7         | <b>110.3</b>                        |
|      | Aug   | 160.1               | 88.0         | <b>110.8</b>                        |
|      | Sep   | 140.3               | 89.8         | <b>105.8</b>                        |
|      | Oct   | 126.0               | 104.4        | <b>111.3</b>                        |
|      | Nov   | 99.7                | 107.0        | <b>104.7</b>                        |
|      | Dec   | 127.5               | 102.0        | <b>110.1</b>                        |
| 2021 | Jan   | 88.9                | 107.3        | <b>101.4</b>                        |
|      | Feb   | 60.3                | 100.1        | <b>87.5</b>                         |
|      | Mar   | 59.3                | 106.2        | <b>91.3</b>                         |
|      | Apr   | 86.3                | 105.0        | <b>99.1</b>                         |
|      | May   | 86.0                | 105.4        | <b>99.3</b>                         |
|      | Jun   | 58.1                | 111.5        | <b>94.6</b>                         |
|      | Jul   | 43.6                | 124.8        | <b>99.1</b>                         |
|      | Aug   | 39.1                | 126.5        | <b>98.8</b>                         |
|      | Sep   | 45.9                | 122.1        | <b>98.0</b>                         |
|      | Oct   | 55.3                | 122.1        | <b>100.9</b>                        |
|      | Nov   | 69.1                | 113.5        | <b>99.4</b>                         |
|      | Dec   | 80.6                | 110.8        | <b>101.2</b>                        |
| 2022 | Jan   | 84.2                | 105.8        | <b>99.0</b>                         |
|      | Feb   | 59.2                | 107.2        | <b>91.9</b>                         |
|      | Mar   | 126.0               | 92.8         | <b>103.3</b>                        |
|      | Apr   | 239.9               | 49.2         | <b>109.6</b>                        |
|      | May   | 137.8               | 85.8         | <b>102.2</b>                        |
|      | Jun   | 89.1                | 103.8        | <b>99.1</b>                         |
|      | Jul   | 91.0                | 106.4        | <b>101.5</b>                        |
|      | Aug   | 91.7                | 106.2        | <b>101.6</b>                        |
|      | Sep   | 78.9                | 108.9        | <b>99.4</b>                         |
|      | Oct   | 73.8                | 116.8        | <b>103.2</b>                        |
|      | Nov   | 81.3                | 109.4        | <b>100.5</b>                        |
|      | Dec   | 121.8               | 90.8         | <b>100.6</b>                        |

**Table 2: Electricity sources index (2015=100) Continue...**

| Year | Month | Own generated Index | Import Index | Electricity Sources Composite Index |
|------|-------|---------------------|--------------|-------------------------------------|
| 2023 | Jan   | 157.8               | 81.9         | <b>105.9</b>                        |
|      | Feb   | 188.6               | 62.0         | <b>102.1</b>                        |
|      | Mar   | 105.2               | 105.0        | <b>105.0</b>                        |
|      | Apr   | 210.0               | 72.6         | <b>116.1</b>                        |
|      | May   | 240.9               | 61.6         | <b>118.4</b>                        |
|      | Jun   | 173.5               | 75.5         | <b>106.6</b>                        |
|      | Jul   | 144.9               | 90.9         | <b>108.0</b>                        |
|      | Aug   | 136.4               | 86.0         | <b>102.0</b>                        |
|      | Sep   | 111.4               | 93.1         | <b>98.9</b>                         |
|      | Oct   | 118.6               | 95.8         | <b>103.1</b>                        |
|      | Nov   | 160.4               | 88.3         | <b>111.1</b>                        |
|      | Dec   | 261.2               | 67.2         | <b>128.6</b>                        |
| 2024 | Jan   | 262.6               | 63.7         | <b>126.8</b>                        |
|      | Feb   | 245.5               | 73.0         | <b>127.7</b>                        |
|      | Mar   | 261.4               | 69.4         | <b>130.3</b>                        |
|      | Apr   | 243.4               | 66.5         | <b>122.6</b>                        |
|      | May   | 213.0               | 68.1         | <b>114.0</b>                        |
|      | Jun   | 137.8               | 89.0         | <b>104.4</b>                        |
|      | Jul   | 121.6               | 102.6        | <b>108.6</b>                        |

**Table 3: Electricity Sales in MWH**

| Year        | Month | Domestic Sales | Export Sales |
|-------------|-------|----------------|--------------|
| <b>2020</b> | Jan   | 293,012        | 9,741        |
|             | Feb   | 263,685        | 9,854        |
|             | Mar   | 345,424        | 9,445        |
|             | Apr   | 261,738        | 9,029        |
|             | May   | 268,139        | 8,600        |
|             | Jun   | 279,446        | 9,359        |
|             | Jul   | 289,489        | 9,704        |
|             | Aug   | 295,368        | 9,809        |
|             | Sep   | 287,338        | 9,895        |
|             | Oct   | 299,602        | 10,497       |
|             | Nov   | 282,311        | 10,674       |
|             | Dec   | 302,423        | 10,544       |
| <b>2021</b> | Jan   | 298,848        | 9,608        |
|             | Feb   | 271,421        | 8,931        |
|             | Mar   | 290,056        | 9,164        |
|             | Apr   | 284,527        | 9,089        |
|             | May   | 297,400        | 8,915        |
|             | Jun   | 284,881        | 9,015        |
|             | Jul   | 297,535        | 8,978        |
|             | Aug   | 296,030        | 8,979        |
|             | Sep   | 293,074        | 9,668        |
|             | Oct   | 301,575        | 9,917        |
|             | Nov   | 299,292        | 10,346       |
|             | Dec   | 294,724        | 10,964       |
| <b>2022</b> | Jan   | 299,509        | 13,339       |
|             | Feb   | 277,413        | 9,566        |
|             | Mar   | 305,817        | 18,501       |
|             | Apr   | 282,149        | 35,519       |
|             | May   | 288,780        | 22,849       |
|             | Jun   | 297,285        | 10,415       |
|             | Jul   | 307,537        | 7,535        |
|             | Aug   | 303,106        | 11,149       |
|             | Sep   | 303,158        | 4,507        |
|             | Oct   | 313,408        | 2,238        |
|             | Nov   | 310,318        | 3,011        |
|             | Dec   | 296,953        | 4,671        |

**Table 3: Electricity Sales in MWH Continue...**

| Year        | Month | Domestic Sales | Export Sales |
|-------------|-------|----------------|--------------|
| <b>2023</b> | Jan   | 314,507        | 11,777       |
|             | Feb   | 321,345        | 30,395       |
|             | Mar   | 318,289        | 9,072        |
|             | Apr   | 302,068        | 46,496       |
|             | May   | 310,238        | 38,042       |
|             | Jun   | 300,076        | 28,321       |
|             | Jul   | 313,495        | 11,618       |
|             | Aug   | 298,484        | 19,279       |
|             | Sep   | 303,727        | 5,645        |
|             | Oct   | 314,812        | 4,856        |
|             | Nov   | 320,895        | 25,344       |
|             | Dec   | 310,580        | 75,727       |
| <b>2024</b> | Jan   | 316,402        | 75,037       |
|             | Feb   | 305,879        | 88,484       |
|             | Mar   | 318,457        | 80,859       |
|             | Apr   | 307,526        | 78,837       |
|             | May   | 402,701        | 44,885       |
|             | Jun   | 320,287        | 8,604        |
|             | Jul   | 328,280        | 10,607       |