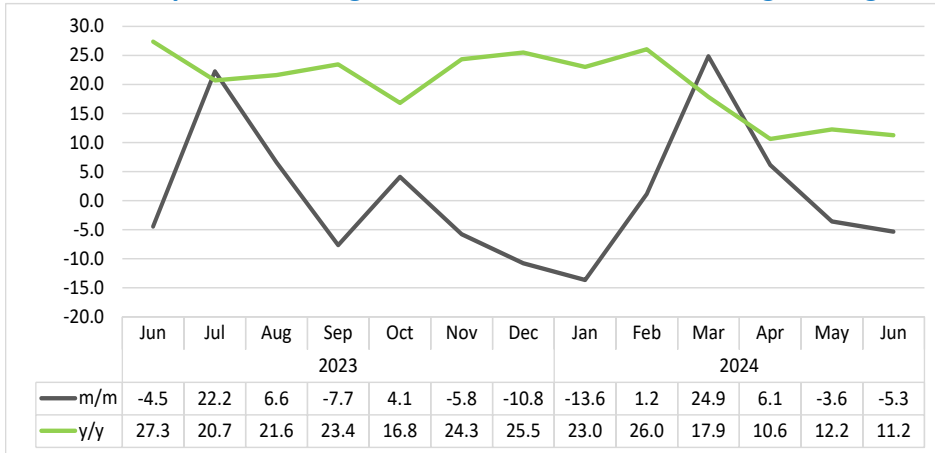


PASSENGERS ARRIVALS & DEPARTURES

JUNE 2024

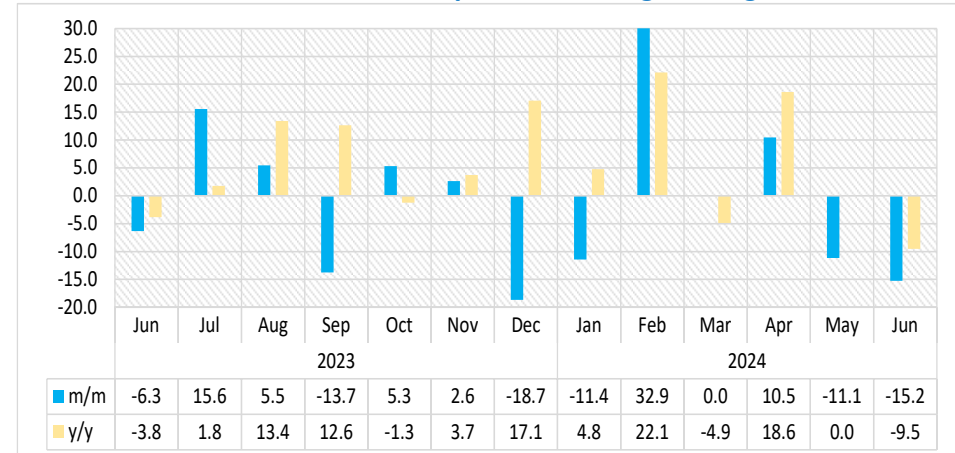


Chart 1: Composite Passengers Movement Index, Percentage Change



- The **Composite Passengers Movement Index** (consisting of regional, international, and domestic arrivals and departures of passengers at airports) contracted by 5.3 percent in June 2024, compared to a contraction of 3.6 percent recorded in the preceding month. Conversely, the index increased by 11.2 percent year-on-year (Chart 1).
- In absolute terms, a total of 88 091 passenger movements were recorded at airport terminals across the country in June 2024, compared to 93 041 passenger movements in May 2024 and 79 187 passenger movements registered in the corresponding month of 2023.
- Hosea Kutako International Airport continue to be the main contributor to passenger movements, accounting for the largest share of 80.7 percent, followed by Walvis Bay and Eros airports, with shares of 8.5 percent and 6.8 percent, respectively.

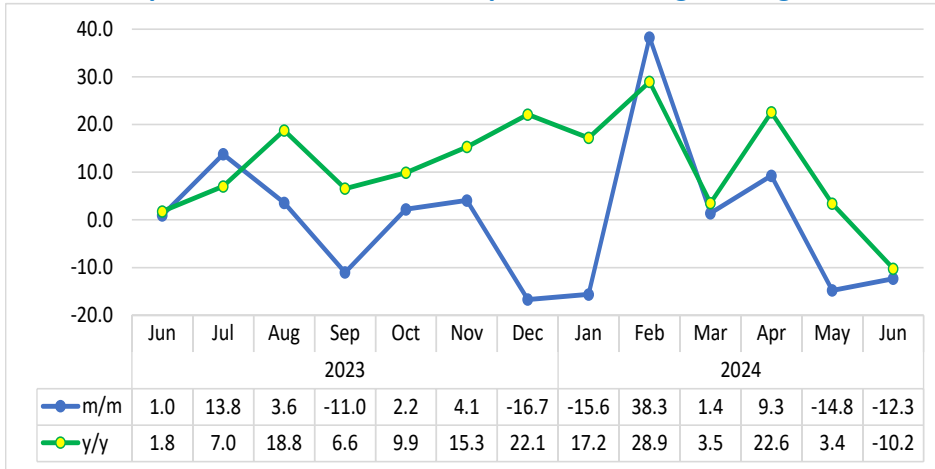
Chart 2: Arrivals Index for Eros Airport, Percentage Change¹



- The **Arrivals Index for Eros Airport** in June 2024 declined by 15.2 percent on a monthly basis, compared to a decrease of 11.1 percent posted in the previous month. Furthermore, the index contracted by 9.5 percent year-on-year (Chart 2).
- The number of passengers arriving via Eros Airport terminals in June 2024 decreased to 2 902 passengers, compared to 3 424 passengers noted in the previous month and 3 207 passenger arrivals recorded in June 2023.

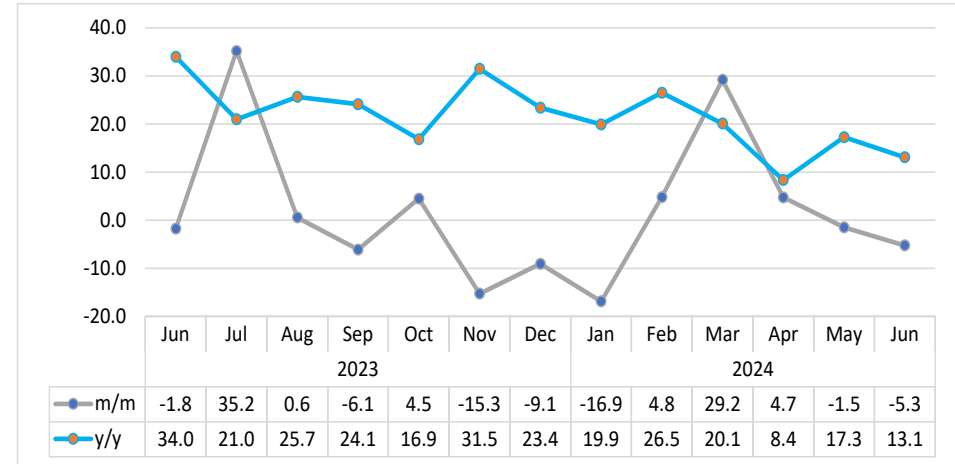
¹ This chart is limited to -20 percent and 30 percent for better presentation.

Chart 3: Departures Index for Eros Airport, Percentage Change



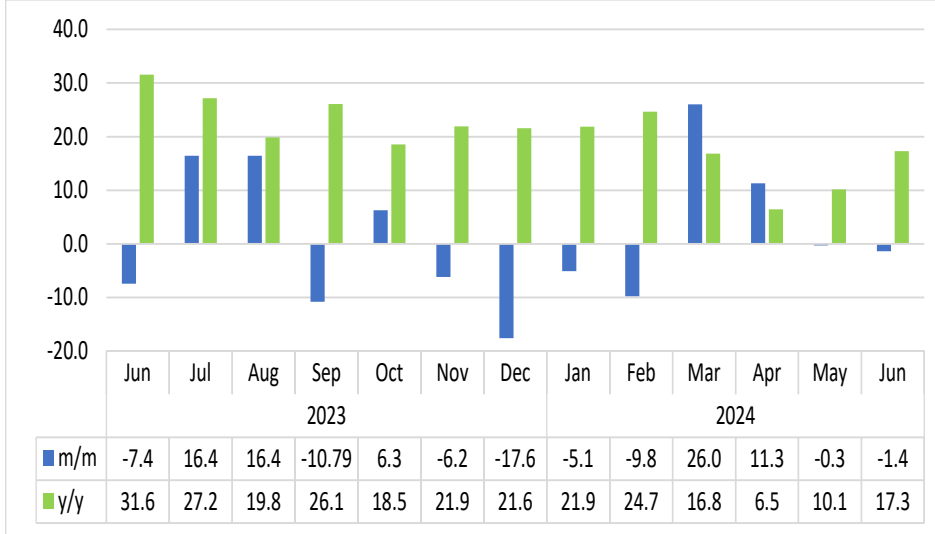
- The Index of **Departures for Eros Airport** in June 2024 contracted by 12.3 percent, compared to a reduction of 14.8 percent recorded in the preceding month. Furthermore, the index reduced by 10.2 percent year-on-year (Chart 3).
- The number of passengers that departed through Eros Airport terminals in June 2024 decreased to 3 072 passengers, down from 3 504 passengers registered a month earlier, while 3 422 passengers were recorded in June 2023.

Chart 4: Arrivals Index for Hosea Kutako Airport, Percentage Change



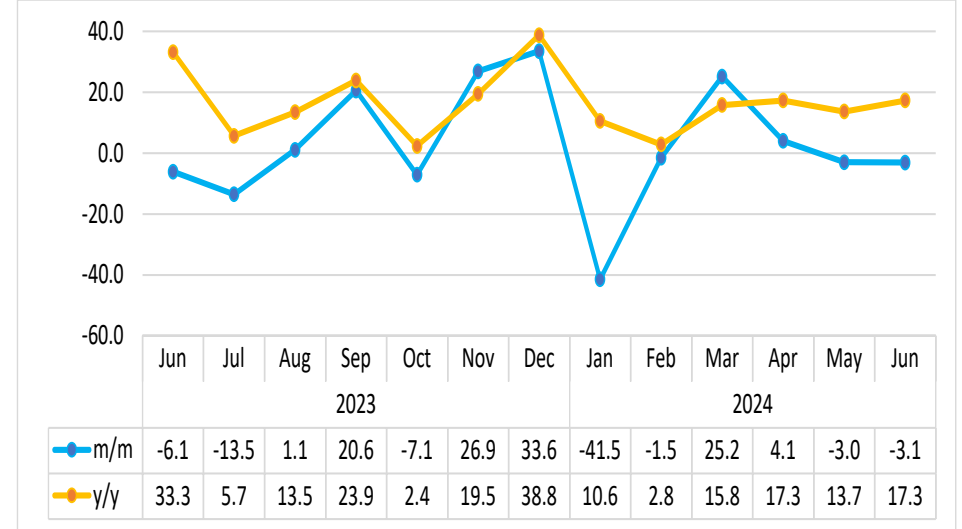
- The **Arrivals Index for Hosea Kutako Airport** in June 2024 declined by 5.3 percent on a monthly basis, compared to a decline of 1.5 percent registered in May 2024. However, the index registered an increase of 13.1 percent year-on-year (Chart 4).
- In June 2024, the number of passengers arriving via Hosea Kutako Airport terminals declined to 35 367 passengers, compared to 37 329 passengers recorded in the preceding month, while 31 272 passenger arrivals were registered in June 2023.

Chart 5: Departures Index for Hosea Kutako Airport, Percentage Change



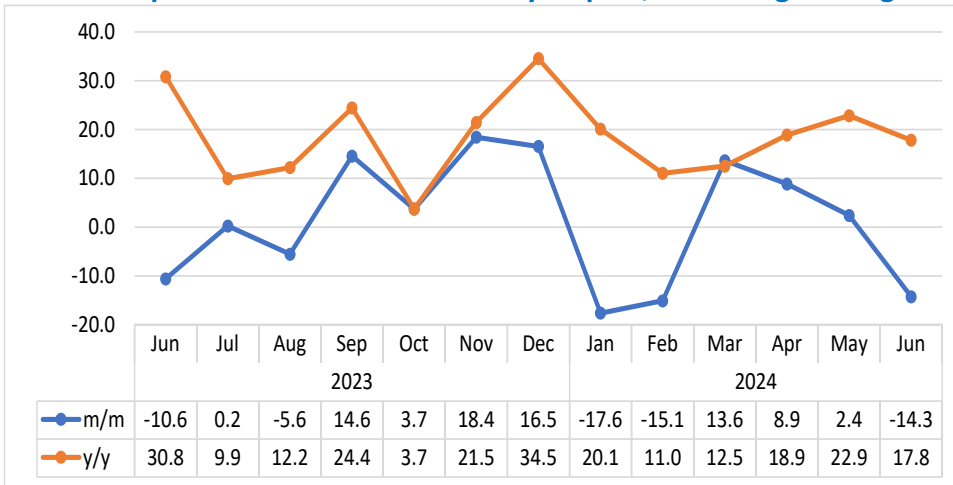
- The **Departures Index for Hosea Kutako Airport** in June 2024 slowed down on a monthly basis, registering a decline of 1.4 percent, compared to a decrease of 0.3 percent posted in May 2024. Conversely, the index posted an increase of 17.3 percent year-on-year (Chart 5).
- In absolute terms, the number of passengers departing through Hosea Kutako Airport terminals declined to 35 734 passengers in June 2024, compared to 36 245 passengers recorded in May 2024 and 30 470 passengers that was recorded in June 2023.

Chart 6: Arrivals Index for Walvis Bay Airport, Percentage Change



- The **Arrivals Index for Walvis Bay Airport** in June 2024 declined by 3.1 percent on a monthly basis, in contrast to a reduction of 3.0 percent registered in May 2024. On annual basis, the index registered an increase of 17.3 percent (Chart 6).
- In absolute terms, the number of passengers arriving via Walvis Bay Airport terminals declined to 3 762 passengers in June 2024, compared to 3 882 passengers noted in the preceding month, while 3 206 passengers were registered in June 2023.

Chart 7: Departures Index for Walvis Bay Airport, Percentage Change



- The **Departures Index for Walvis Bay Airport** in June 2024 declined by 14.3 percent on a monthly basis, in contrast to a growth of 2.4 percent, posted in May 2024. On the other hand, the index increased by 17.8 percent year-on-year (Chart 7).
- In absolute terms, the number of passengers that departed through Walvis Bay Airport decreased to 3 682 passengers in June 2024, from 4 295 passengers recorded in May 2024, while 3 125 passenger departures were recorded in June 2023.

Table 1: The indices of regional, international and domestic arrivals and departures

Year	Month	Total Passengers	Index for (Regional, International & Domestic) Arrivals	Index for (Regional, International & Domestic) Departures
2020	Jan	98.2	94.8	101.6
	Feb	92.4	92.6	92.2
	Mar	60.6	57.1	64.1
	Apr	2.0	1.1	3.0
	May	8.2	8.2	8.1
	Jun	9.4	9.1	9.7
	Jul	12.0	11.3	12.7
	Aug	7.8	7.7	8.0
	Sep	7.8	7.3	8.2
	Oct	21.2	22.8	19.6
	Nov	30.5	32.3	28.7
	Dec	34.8	37.3	32.2
2021	Jan	28.3	26.0	30.7
	Feb	19.7	19.2	20.1
	Mar	27.0	27.5	26.5
	Apr	33.9	34.2	33.5
	May	37.5	36.8	38.3
	Jun	26.8	25.6	28.0
	Jul	21.6	22.6	20.6
	Aug	34.1	34.1	34.2
	Sep	42.4	44.8	40.0
	Oct	58.3	61.2	55.4
	Nov	58.4	61.4	55.4
	Dec	43.7	44.3	43.1

Table 1: The indices of regional, international and domestic arrivals and departures continue...

Year	Month	Total Passengers	Index for (Regional, International & Domestic) Arrivals	Index for (Regional, International & Domestic) Departures
2022	Jan	55.2	41.1	69.4
	Feb	55.3	40.2	70.4
	Mar	83.5	61.8	105.5
	Apr	106.6	76.3	137.2
	May	99.5	72.1	127.3
	Jun	72.9	72.8	73.0
	Jul	94.0	101.4	86.5
	Aug	99.4	98.0	100.8
	Sep	90.4	93.0	87.8
	Oct	99.5	101.9	97.1
	Nov	88.0	83.9	92.3
	Dec	77.8	78.9	76.8
2023	Jan	68.6	66.2	70.9
	Feb	67.7	68.7	66.7
	Mar	90.4	92.5	88.3
	Apr	102.2	102.4	102.1
	May	97.1	95.3	99.0
	Jun	92.8	93.1	92.4
	Jul	113.4	119.9	106.8
	Aug	120.9	121.3	120.4
	Sep	111.6	114.4	108.8
	Oct	116.2	117.9	114.5
	Nov	109.5	106.8	112.2
	Dec	97.7	100.0	95.3
2024	Jan	84.4	80.1	88.6
	Feb	85.3	86.6	84.0
	Mar	106.5	108.2	104.8
	Apr	113.1	113.8	112.3
	May	109.0	109.2	108.8
	Jun	103.2	102.0	104.4

Methodology

- Background:** The information in this report looks at both citizen and non-citizen travelers' arrivals and departures.
- Data sources:** Namibia Airports Company
- Base year:** The volumes have been referenced to 2015 data as of November 2019
- Conversion:** 1 basis point = 0.01 percent