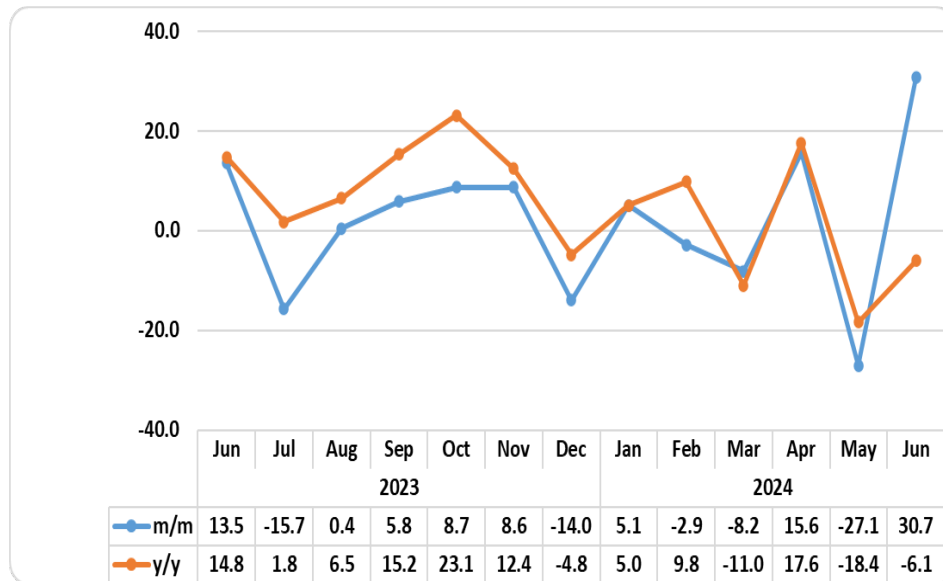


MINING

JUNE 2024

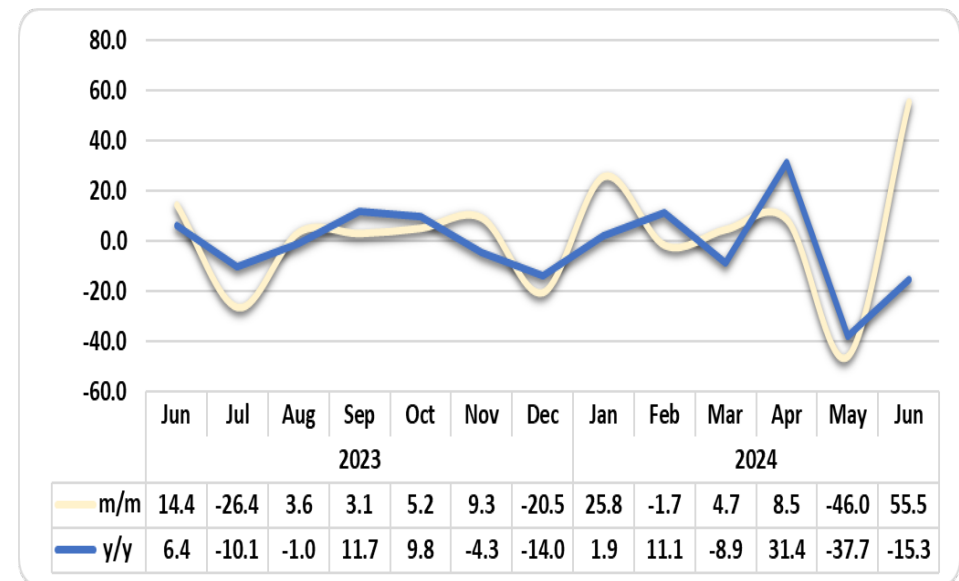


Chart 1: Mining Composite Production Index, Percentage Change



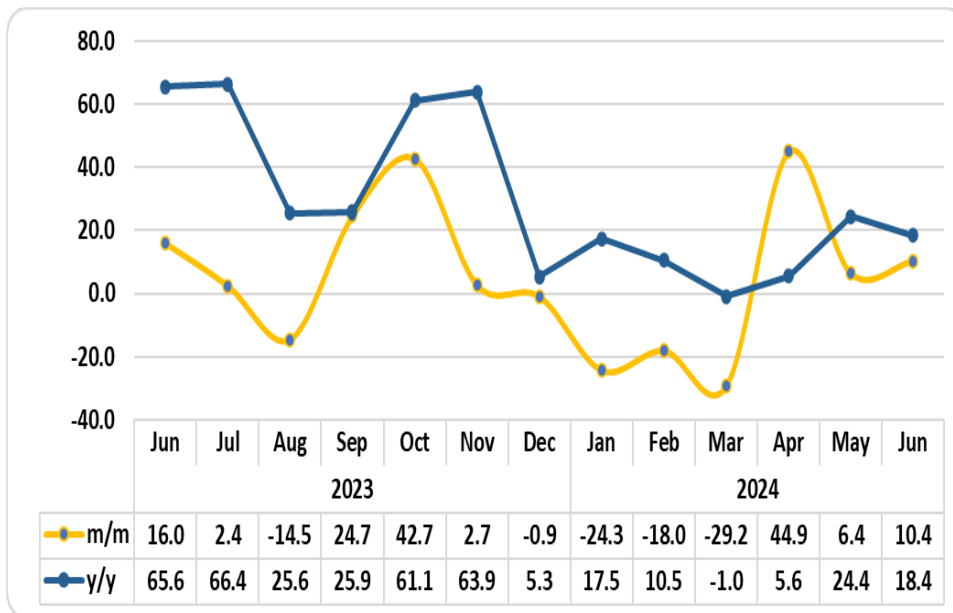
- The **Composite Mining Production Index** consists of Diamonds, Gold bullion, Uranium and ‘Zinc concentrate and contained’. On a monthly basis, the index for June 2024 increased by 30.7 percent, in contrast to a reduction of 27.1 percent recorded a month earlier. Conversely, the index declined by 6.1 percent year-on-year (Chart 1).
- The increase registered on a monthly basis is mainly attributed to an increase in the production of Diamonds, Gold Bullion and ‘Zinc concentrated & contained’. On the other hand, Uranium recorded a decrease in the production levels during the month under review.

Chart 2: Diamonds Production Index, Percentage Change



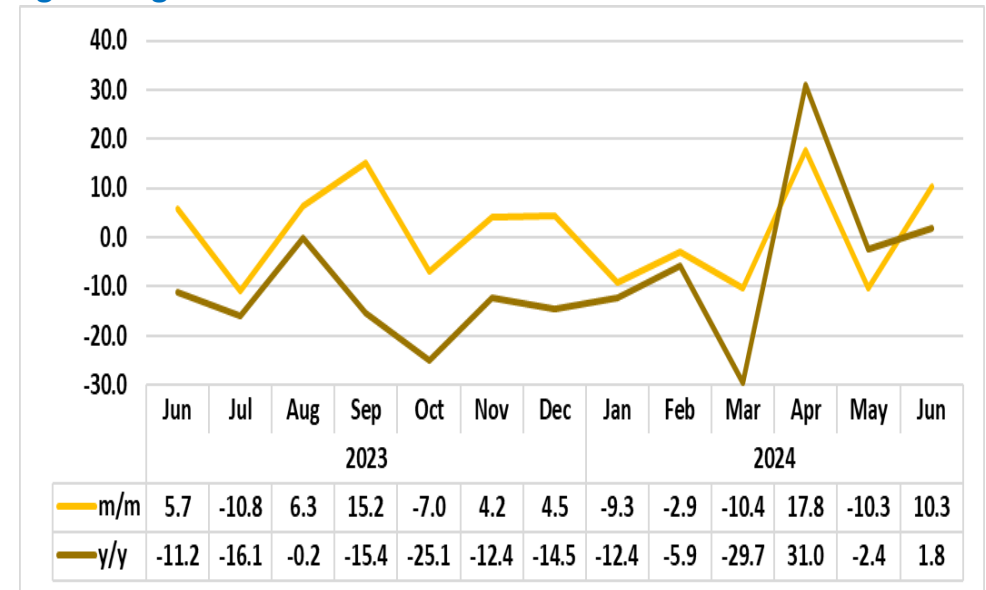
- In June 2024, the **Diamond Production Index** rebounded on a monthly basis, registering an increase of 55.5 percent, in contrast to a decline of 46.0 percent registered in the preceding month. On the other hand, the index declined by 15.3 percent year-on-year (Chart 2).
- During the period under review, 198 101 carats of diamonds were produced, compared to 127 414 carats that were recorded in May 2024, while 233 932 carats were produced in the corresponding month of 2023.

Chart 3: Gold Bullion Production Index, Percentage Change



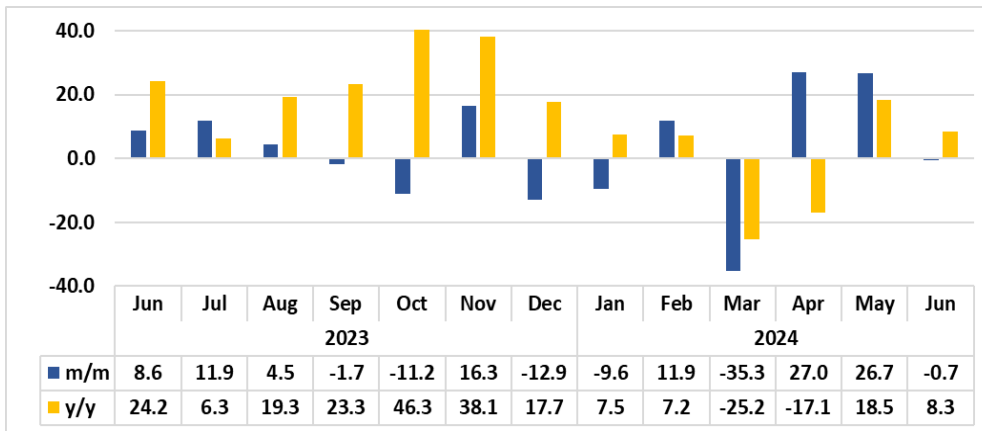
- The **Gold Bullion Production Index** for June 2024 increased by 10.4 percent on a monthly basis, as opposed to a growth of 6.4 percent noted in the preceding month. In addition, the index rose by 18.4 percent year-on-year (Chart 3).
- The production level for gold bullion in June 2024 stood at 854 kg compared to 773 kg and 721 kg that were recorded in May 2024 and in the corresponding month of 2023, respectively.

Chart 4: 'Zinc concentrate & contained' Production Index, Percentage Change



- During the period under review, the **Zinc concentrate & contained Production Index** recovered by registering an increase of 10.3 percent on a monthly basis, compared to a reduction of 10.3 percent recorded in the preceding month. Furthermore, the index increased by 1.8 percent year-on-year (Chart 4).
- Namibia produced 6 186 tonnes of zinc concentrate and contained during the reporting period, compared to 5 610 tonnes and 6 080 tonnes that were recorded in May 2024 and in the corresponding month of 2023, respectively.

Chart 5: Uranium Production Index, Percentage Change¹



- During the month of June 2024, the **Uranium Production Index** declined with a margin of 0.7 percent on a monthly basis, in contrast to a growth of 26.7 percent recorded in the previous month. Furthermore, the index grew by 8.3 percent year-on-year (Chart 5).
- A total of 720 tonnes of uranium was produced during the period under review, compared to 725 tonnes that was registered in May 2024, while 665 tonnes was produced in the corresponding month of 2023.

¹ This chart is limited to 40 percent for better readability.

Table 1: Mining Composite Index of the Selected Minerals

Year	Month	Diamonds	Uranium	Zinc concentrate & contained	Gold Bullion	Composite Index
2020	Jan	116.8	163.2	98.8	113.0	119.7
	Feb	106.6	81.0	103.8	72.4	96.9
	Mar	126.0	127.9	119.1	120.1	124.0
	Apr	74.6	194.3	110.6	100.8	94.0
	May	77.0	170.4	73.8	110.3	92.7
	Jun	97.5	163.2	81.0	97.9	103.6
	Jul	81.9	134.2	85.9	101.2	90.8
	Aug	60.1	161.6	86.4	99.5	79.3
	Sep	24.8	211.4	83.7	91.9	60.3
	Oct	78.4	223.3	88.3	188.1	113.9
	Nov	97.0	148.2	87.2	103.5	102.8
	Dec	54.1	240.7	77.4	94.8	83.2
2021	Jan	90.2	173.3	72.2	70.5	94.8
	Feb	76.2	194.7	60.0	63.5	86.2
	Mar	64.6	162.3	69.2	66.5	75.8
	Apr	70.2	120.2	70.5	76.0	76.4
	May	79.9	198.6	90.9	67.8	91.3
	Jun	80.2	150.7	87.3	69.8	86.2
	Jul	91.5	163.2	83.5	119.7	103.5
	Aug	85.9	169.6	93.6	163.0	108.6
	Sep	93.6	210.4	91.7	164.5	118.5
	Oct	95.1	182.1	102.1	182.6	119.9
	Nov	100.2	195.9	91.4	164.9	121.2
	Dec	69.8	215.9	90.5	166.5	103.7

Table 2: Mining Composite Index of the Selected Minerals...

Year	Month	Diamonds	Uranium	Zinc concentrate & contained	Gold Bullion	Composite Index
2022	Jan	101.0	83.6	73.1	110.8	98.7
	Feb	90.1	197.2	75.7	81.6	99.5
	Mar	117.4	205.9	82.5	98.1	121.6
	Apr	114.0	136.9	73.6	83.6	108.6
	May	120.4	160.9	70.7	108.0	119.6
	Jun	148.7	168.6	82.3	84.1	135.5
	Jul	129.4	220.6	77.8	85.8	128.8
	Aug	121.8	205.3	69.5	97.2	123.6
	Sep	111.2	195.2	94.5	120.8	120.9
	Oct	119.0	146.1	99.2	134.8	123.1
	Nov	149.2	180.1	88.4	136.0	146.5
	Dec	131.9	184.0	94.7	209.8	148.7
2023	Jan	140.0	182.3	83.8	142.2	141.6
	Feb	126.3	204.6	75.8	123.9	131.5
	Mar	161.2	189.6	90.8	97.8	148.9
	Apr	121.3	217.3	57.4	133.0	130.4
	May	138.2	192.8	69.2	120.1	137.0
	Jun	158.2	209.4	73.1	139.3	155.5
	Jul	116.4	234.4	65.3	142.7	131.1
	Aug	120.5	245.0	69.3	122.0	131.6
	Sep	124.2	240.7	79.9	152.1	139.3
	Oct	130.6	213.7	74.3	217.1	151.5
	Nov	142.7	248.7	77.4	222.9	164.6
	Dec	113.5	216.7	80.9	220.8	141.5
2024	Jan	142.8	196.0	73.4	167.1	148.7
	Feb	140.3	219.3	71.3	136.9	144.4
	Mar	146.9	141.8	63.9	96.9	132.6
	Apr	159.4	180.2	75.2	140.4	153.3
	May	86.2	228.3	67.5	149.4	111.8
	Jun	134.0	226.8	74.4	164.9	146.1

Definitions

- **Diamond:** Is a very hard mineral that is in the form of bars of carbon and is used, especially in Jewellery.
- **Gold Bullion:** Is a gold or silver in bulk before coining or valued by weight which means gold bullion is gold valued purify and weights.
- **Zinc:** Is a metallic element with a blue-white colour, used as a protective covering for iron and to make metal alloys like nickel silver.
- **Uranium:** Is a Silver-heavy radioactive polyvalent metallic element that is found especially in uraninite and exists naturally as a mixture of mostly no fissionable elements.

Methodology notes and data sources

Data Sources: Data sourced from Bank of Namibia for the period starting from January 2019.

Base year: The Mining sectoral report is harmonised with the quarterly and annual National Accounts base year 2015.

Index calculations: The index of mining production was weighted using the value-added data of 2015. The index is then calculated as a ratio of the volume of a specific component in a specific month to the total volume of that component in 2015.

Conversion: 1 basis point = 0.01 percent