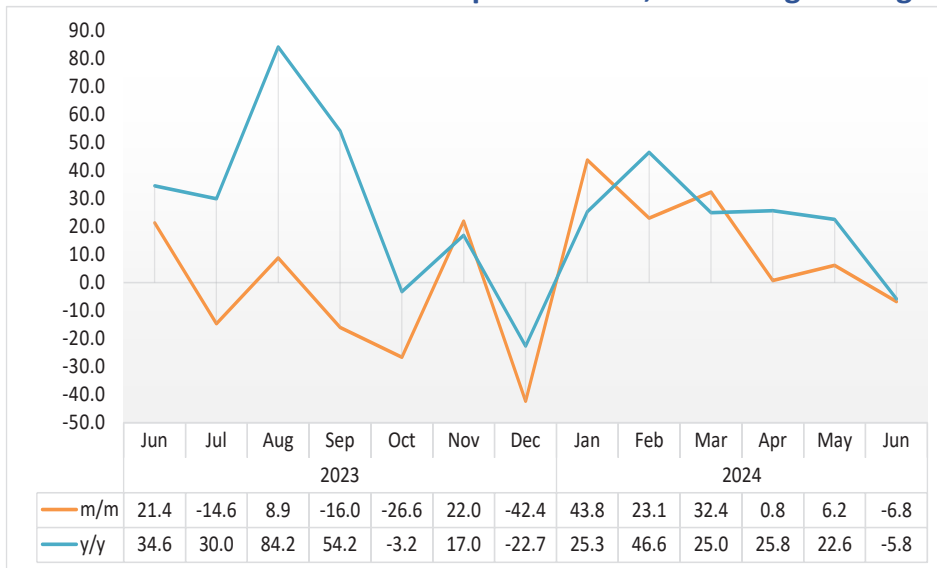


# LIVESTOCK

JUNE 2024

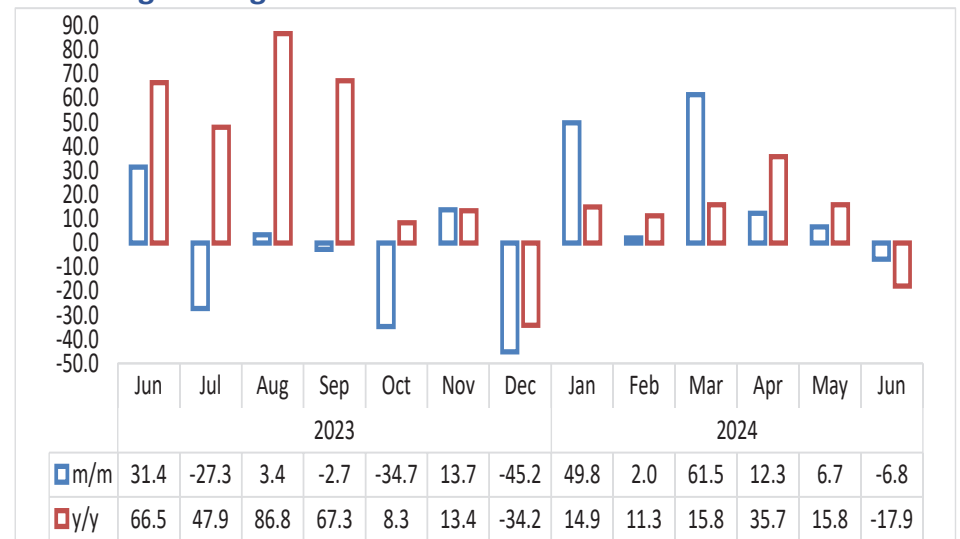


**Chart 1: Livestock Marketed Composite Index, Percentage Change**



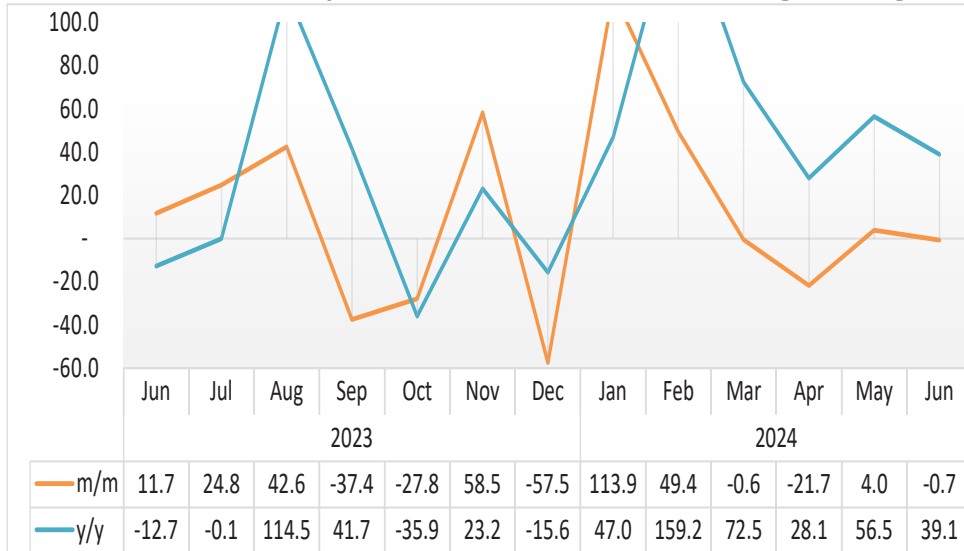
- In June 2024, the **Livestock Marketed Composite Index** decreased by 6.8 percent on a monthly basis, in contrast to a growth of 6.2 percent registered a month earlier. Additionally, the index declined by 5.8 percent year-on-year (Chart 1).
- In absolute terms, the total number of livestock marketed during June 2024 decreased to 138 096, down from 157 435 animals recorded in the preceding month and 142 287 animals that was registered in the corresponding month of 2023.

**Chart 2: Cattle Export Approved Abattoirs and Butchers Index, Percentage Change**



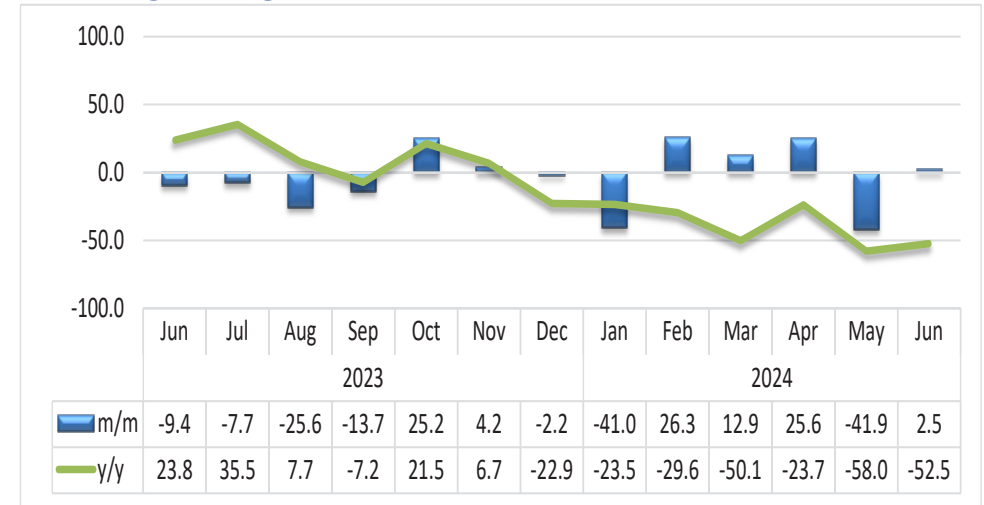
- In June 2024, the **Cattle Export-Approved Abattoirs and Butchers Index** recorded a decline of 6.8 percent on a monthly basis, as opposed to a growth of 6.7 percent posted in the previous month. Moreover, the index contracted by 17.9 percent year-on-year. (Chart 2).
- The total number of cattle marketed to export-approved abattoirs and butchers during June 2024 stood at 16 032, compared to 17 195 registered in May 2024 and 19 518 posted in the same month last year.

**Chart 3: Live Cattle Exported on Hoof Index, Percentage Change<sup>1</sup>**



- During the period under review, the **Index for Live Cattle Exported on Hoof** declined by a margin of 0.7 percent on a monthly basis, in contrast to a growth of 4.0 percent recorded in the preceding month. Moreover, the index increased by 39.1 percent year-on-year (Chart 3).
- During the review period, the total number of live cattle exported on hoof amounted to 17 361, compared to 17 485 cattle recorded in May 2024 and 12 482 cattle that were registered in the corresponding month of 2023.

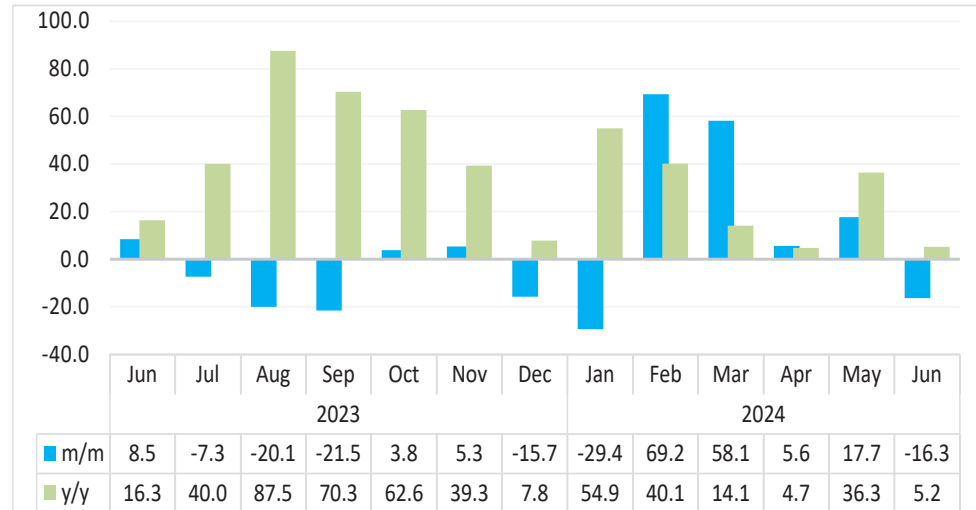
**Chart 4: Small Stock Export Approved Abattoirs and Butchers Index, Percentage Change**



- During the period under review, the **Small Stock Export-Approved Abattoirs and Butchers Index** rebounded on a monthly basis, registering an increase of 2.5 percent, in contrast to the decline of 41.9 percent noted in May 2024. Conversely, the index recorded a decrease of 52.5 percent year-on-year (Chart 4).
- In absolute terms, a total of 9 225 small stock were marketed through export-approved abattoirs and butchers in June 2024. Of these, 9 199 were sourced from the South of the Veterinary Cordon Fence (S-VCF), while 26 were sourced from the North of the Veterinary Cordon Fence (N-VCF).

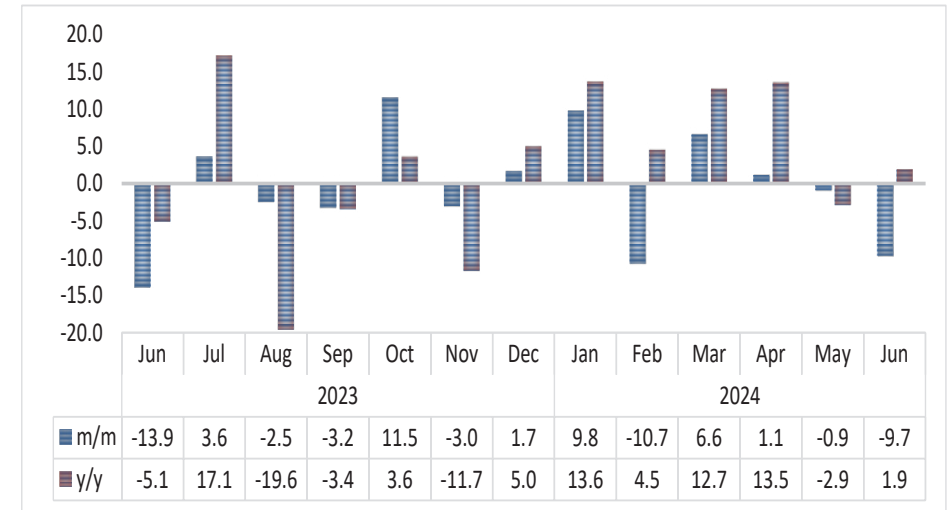
<sup>1</sup> This chart is limited to 100 percent for better presentation.

**Chart 5: Live Small Stock Export, Percentage Change**



- During June 2024, the **Index for Live Export Small Stock Export** decreased by 16.3 percent on a monthly basis, as opposed to a growth of 17.7 percent posted in the previous month. Additionally, the index recorded an increase of 5.2 percent year-on-year (Chart 5).
- In the month under review, 91 764 small stock were exported live, with sheep accounting for 83.6 percent and goats accounting for 16.4 percent of the total live small stock export.

**Chart 6: Pigs Index, Percentage Change**



- On a monthly basis, the **Index for Pigs** decreased by 9.7 percent in June 2024, compared with a decrease of 0.9 percent noted in the preceding month. Conversely, the index grew by 1.9 percent year-on-year (Chart 6).
- The number of pigs slaughtered locally during June 2024 declined to 3 714, down from 4 111 that was posted in May 2024 while 3 646 was recorded in the corresponding month of 2023.

**Table 1: Number of livestock marketed ('000)**

Year	Month	Cattle export abattoirs & butchers	Cattle live exported South Africa & Angola	Small stock Export abattoirs and butchers	Total live small stock exported South Africa and Angola	Pigs slaughtered	Total Livestock Marketed
2020	Jan	6	10	11	11	4	42
	Feb	6	21	11	18	3	61
	Mar	8	18	15	32	4	77
	Apr	8	10	28	34	4	83
	May	13	6	14	36	3	73
	Jun	10	10	13	38	4	74
	Jul	8	19	11	29	4	71
	Aug	6	16	9	22	4	55
	Sep	5	15	10	16	4	50
	Oct	7	13	11	17	4	52
	Nov	8	11	10	25	4	58
	Dec	6	10	11	29	4	60
2021	Jan	4	7	9	7	3	30
	Feb	5	8	11	21	4	49
	Mar	8	11	12	42	4	77
	Apr	8	10	14	41	4	77
	May	8	10	10	54	4	86
	Jun	9	12	11	52	4	88
	Jul	10	14	10	33	4	72
	Aug	9	15	10	25	4	63
	Sep	7	15	10	21	4	57
	Oct	8	13	5	27	4	56
	Nov	6	13	7	29	4	58
	Dec	5	10	5	39	4	62

**Table 1: Number of livestock marketed ('000) cont...**

Year	Month	Cattle export abattoirs & butchers	Cattle live exported South Africa & Angola	Small stock Export abattoirs and butchers	Total live small stock exported South Africa and Angola	Pigs slaughtered	Total Livestock Marketed
2022	Jan	8	8	7	20	4	46
	Feb	8	10	7	32	3	61
	Mar	8	11	10	58	4	91
	Apr	12	10	29	66	4	121
	May	10	14	12	73	4	113
	Jun	12	14	16	75	4	121
	Jul	10	16	13	58	3	99
	Aug	8	10	12	34	5	70
	Sep	9	10	12	30	4	64
	Oct	9	16	12	32	4	72
	Nov	9	13	14	40	4	80
	Dec	9	8	19	43	4	83
2023	Jan	8	10	11	21	4	54
	Feb	8	8	16	40	4	75
	Mar	12	12	25	77	4	131
	Apr	12	13	20	89	4	138
	May	15	11	21	80	4	132
	Jun	20	12	19	87	4	142
	Jul	14	16	18	81	4	132
	Aug	15	22	13	65	4	119
	Sep	14	14	11	51	4	94
	Oct	9	10	14	53	4	90
	Nov	11	16	15	55	4	101
	Dec	6	7	15	47	4	78
2024	Jan	9	14	9	33	4	69
	Feb	9	22	11	56	4	101
	Mar	14	21	12	88	4	141
	Apr	16	17	15	93	4	146
	May	17	17	9	110	4	157
	Jun	16	17	9	92	4	138

**Table 2: Indices of Livestock marketed**

Year	Month	Cattle export abattoirs & butchers	Cattle Live export on hoof	Small stock Export abattoirs and butchers	Total live small stock exported South Africa and Angola	Pigs slaughtered	Composite Index
2020	Jan	60.6	46.6	24.9	23.6	118.7	51.3
	Feb	65.1	99.8	26.2	38.4	109.9	74.1
	Mar	82.2	82.7	33.8	67.3	126.1	78.7
	Apr	79.5	48.1	63.0	70.3	124.5	67.2
	May	133.1	28.7	31.0	75.8	105.3	80.3
	Jun	97.3	46.9	29.9	78.8	120.6	72.4
	Jul	78.4	89.6	25.0	60.5	128.9	78.4
	Aug	56.4	73.3	19.9	45.1	112.7	60.7
	Sep	54.8	68.7	22.6	34.1	119.2	57.7
	Oct	74.2	59.9	24.9	36.0	117.1	63.1
	Nov	78.5	53.8	22.4	52.1	115.2	63.8
	Dec	62.9	45.4	24.4	61.3	132.9	55.5
2021	Jan	43.2	32.0	20.4	14.7	105.5	36.8
	Feb	54.3	36.2	25.5	44.6	116.5	46.4
	Mar	78.6	52.1	27.3	87.5	132.6	67.2
	Apr	84.0	45.7	32.5	84.5	116.9	66.8
	May	80.7	47.9	23.6	112.9	114.9	67.9
	Jun	92.2	56.5	26.0	108.3	112.5	75.7
	Jul	105.2	65.7	23.2	69.4	120.1	81.4
	Aug	95.4	68.9	22.8	52.1	122.2	77.0
	Sep	75.3	70.2	22.0	43.5	121.1	67.9
	Oct	79.6	59.7	11.3	57.0	113.2	65.9
	Nov	59.6	61.4	15.4	60.0	119.1	58.7
	Dec	48.5	44.6	10.5	81.0	135.6	49.7

**Table 2: Indices of Livestock marketed cont....**

Year	Month	Cattle export abattoirs & butchers	Cattle Live export on hoof	Small stock Export abattoirs and butchers	Total live small stock exported South Africa and Angola	Pigs slaughtered	Composite Index
2022	Jan	78.2	38.9	15.4	40.9	115.0	56.6
	Feb	81.3	47.0	16.8	67.2	110.1	63.2
	Mar	83.8	49.9	23.7	121.4	123.6	71.0
	Apr	124.6	47.3	67.0	136.6	128.4	92.4
	May	101.2	65.1	28.3	151.4	129.7	87.3
	Jun	118.0	67.0	35.9	156.2	122.5	96.0
	Jul	96.6	73.1	30.3	120.3	102.9	84.9
	Aug	79.1	48.6	28.3	71.8	146.2	65.3
	Sep	86.0	46.0	28.4	62.0	117.8	65.5
	Oct	86.7	73.4	27.1	67.4	122.5	76.6
	Nov	94.2	60.5	32.2	82.9	139.4	77.3
	Dec	89.0	37.6	43.6	90.3	119.2	67.4
2023	Jan	76.3	46.1	25.9	44.3	120.9	59.8
	Feb	80.5	39.1	35.5	83.0	117.4	62.9
	Mar	124.9	58.4	56.6	161.1	116.1	97.6
	Apr	119.6	61.5	46.5	185.4	116.5	97.8
	May	149.5	52.4	49.1	167.5	135.0	106.5
	Jun	196.6	58.5	44.4	181.7	116.2	129.3
	Jul	143.0	73.0	41.0	168.4	120.5	110.4
	Aug	147.8	104.1	30.5	134.6	117.5	120.2
	Sep	143.8	65.2	26.3	105.6	113.8	101.0
	Oct	94.0	47.0	33.0	109.6	126.9	74.1
	Nov	106.8	74.5	34.3	115.4	123.0	90.4
	Dec	58.6	31.7	33.6	97.3	125.1	52.1
2024	Jan	87.7	67.8	19.8	68.7	137.3	74.9
	Feb	89.5	101.3	25.0	116.2	122.7	92.2
	Mar	144.6	100.7	28.2	183.8	130.8	122.1
	Apr	162.3	78.8	35.5	194.1	132.2	123.0
	May	173.2	82.0	20.6	228.4	131.1	130.6
	Jun	161.5	81.4	21.1	191.1	118.4	121.8

- Data Sources** : The data was obtained from the Meat Board of Namibia.
- Base year** : Livestock Sectoral report is harmonized with the quarterly and annual national accounts base year 2015.
- Calculations of index** : The index is calculated based on the 2015 base year volumes and 2015 weights. The index is the magnitude of the volume. Changes over time, with reference to the volume of the base year 2015. The index is calculated as a ratio of the volume of a specific component in a specific month to the total volume of that component in 2015.
- Conversion** : 1 basis point = 0.01 percent