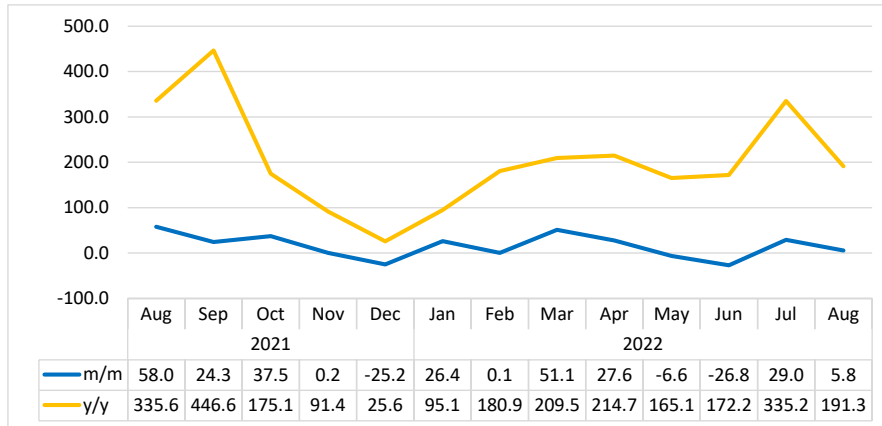


TRAVELLERS ARRIVALS & DEPARTURES

SECTORAL REPORT - AUGUST 2022

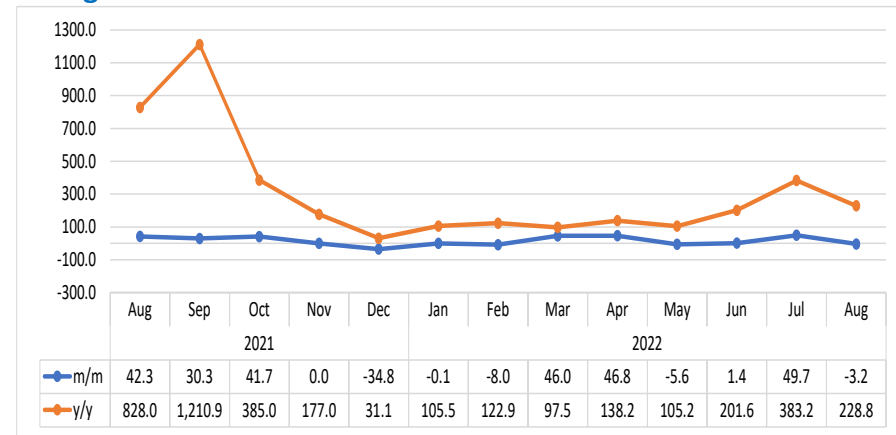


Chart 1: Composite Passenger Movement Index, Percentage Change



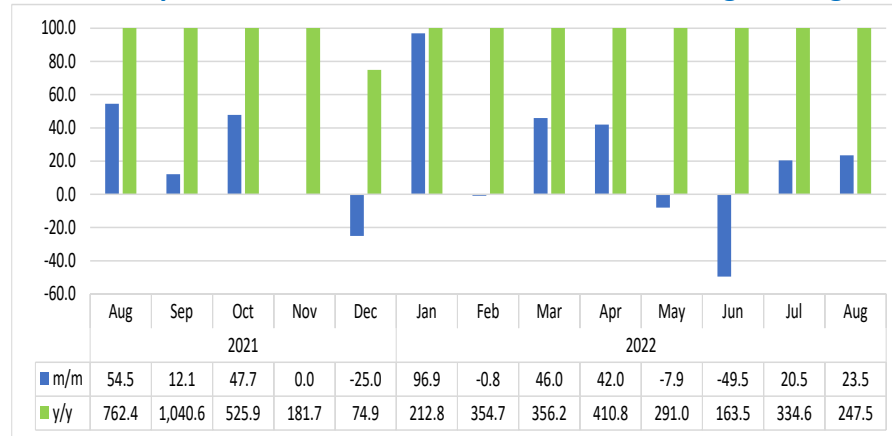
- The **Composite Passenger Movement Index** (consisting of arrivals and departures of passengers at airports) slowed down monthly by 5.8 percent in August 2022, downward from a growth of 29.0 percent registered in the preceding month. Similarly, the index recorded an increase of 191.3 percent year on year (Chart 1).
- The slowdown registered monthly was mainly observed from declines in the movement of passengers via Hosea Kutako, Eros, Walvis Bay, Rundu, Katima Mulilo and Keetmanshoop airports. However, other airports namely Ya Toivo and Lüderitz registered increases in passenger movements.
- A total of 42 088 passengers were recorded at airport terminals across the country during the review period, as opposed to 43 518 passengers registered in July 2022. Departing passengers stood at 42 738 compared to 14 486 passengers that were recorded a year earlier.

Chart 2: Arrivals Index for Hosea Kutako Airport, Percentage Change



- The Index for **Regional and International Arrivals for Hosea Kutako Airport** (Chart 2) declined by 3.2 percent monthly in August 2022, in contrast to a growth of 49.7 percent recorded a month earlier. However, the index registered an increase of 228.8 percent year on year.
- During August 2022, the number of passengers that arrived via Hosea Kutako Airport reduced to 33 832 passengers compared to 34 943 passengers observed in July 2022, while the number of passengers increased when compared to 10 291 passengers recorded in the corresponding period of 2021.

Chart 3: Departures Index for Hosea Kutako, Percentage Change

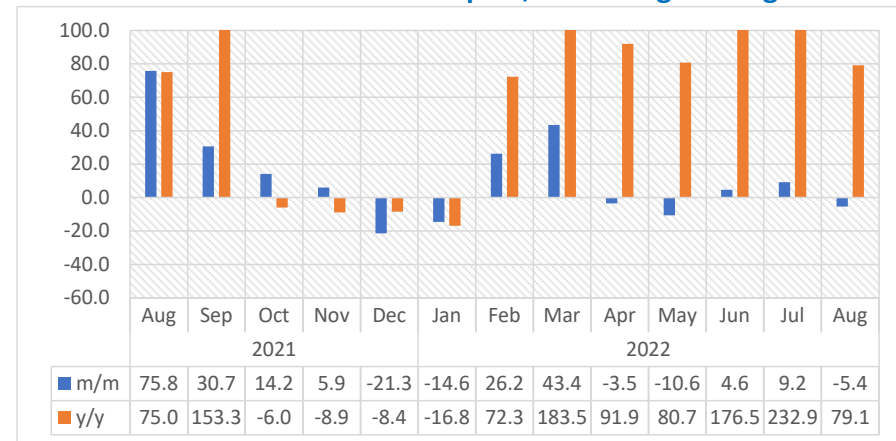


1

- The Index for **Regional and International departures for Hosea Kutako Airport** increased by 23.5 percent on monthly basis in August 2022, when compared to a growth of 20.5 percent posted in the previous month, (Chart 3).
- In absolute terms, the number of passengers movement that departed via Hosea Kutako grew to 34 464 in August 2022 compared to 27 900 passengers in July 2022 and 9 918 passengers registered in the corresponding period of 2021.

¹ This graph is limited to -60 percent and 100 percent for better presentation.

Chart 4: Arrivals Index for Eros Airport, Percentage Change

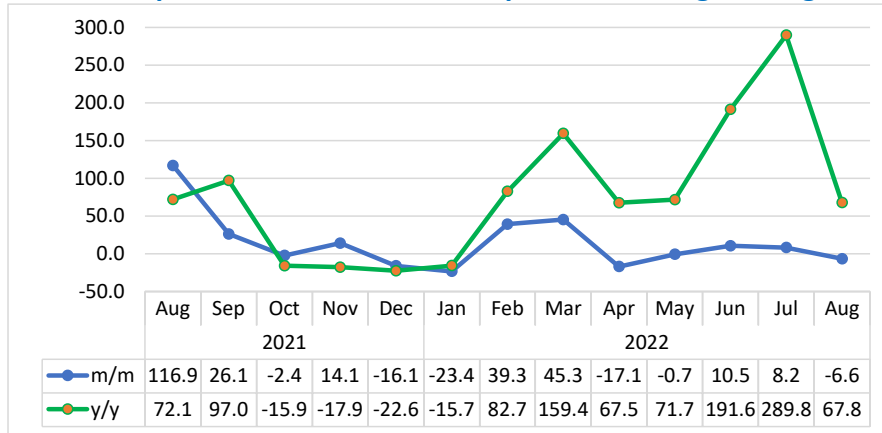


2

- The Index for **Arrivals for Eros Airport** (Chart 4) declined by 5.4 percent monthly during the period under consideration, downward from a growth of 9.2 percent registered in July 2022.
- The number of passengers that arrived in August 2022 via Eros Airport declined to 3 445 passengers, in contrast to 3 642 passengers registered in the preceding month of 2022, while it increased when compared to 1 923 passengers registered in August 2021.

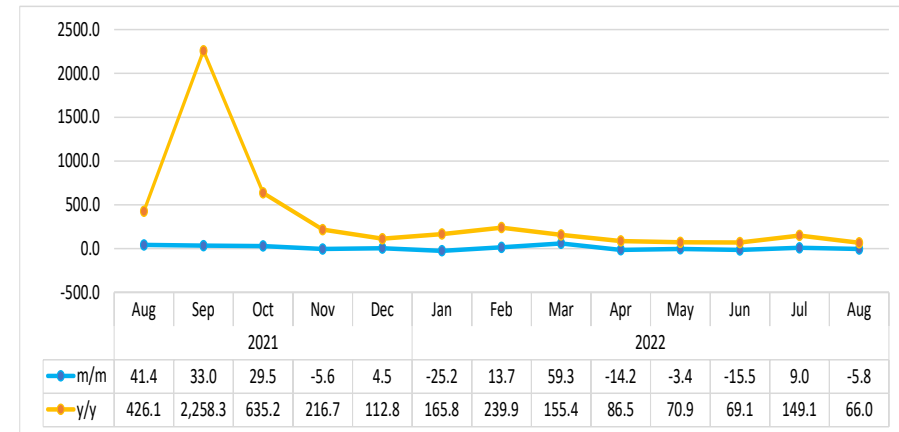
² This graph is limited to -60 percent and 100 percent for better presentation.

Chart 5: Departures Index for Eros Airport, Percentage Change



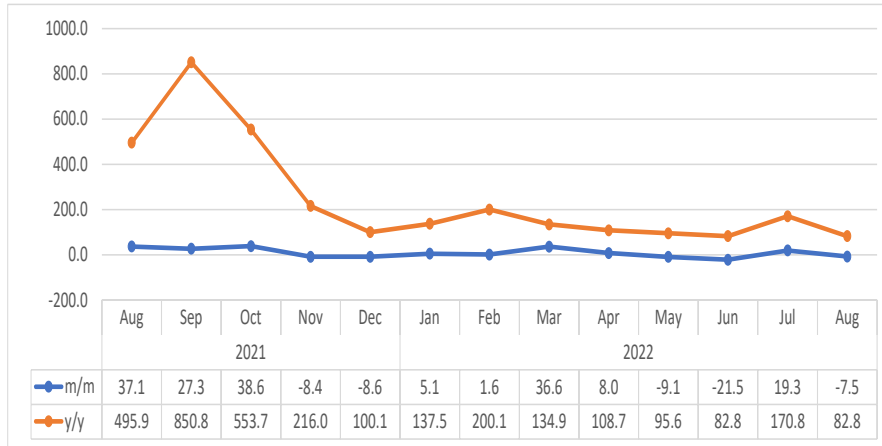
- The Index for **departures for Eros Airport** (Chart 5) declined by 6.6 percent on a monthly basis, in August 2022, in contrast to a growth of 8.2 percent recorded in the preceding month.
- The number of passengers that departed through Eros Airport in August 2022 stood at 3 396 passengers, up from 2 024 passengers registered in the corresponding month of 2021.

Chart 6: Arrivals Index for Walvis Bay, Percentage Change



- The Index for **Regional and International Arrivals for Walvis Bay Airport** (Chart 6) declined monthly, recording a reduction of 5.8 percent in August 2022, a deterioration when compared to a growth of 9.0 percent recorded in the previous month. Annually, the index increased by 66.0 percent.
- A total number of 2 471 passengers arrived in August 2022 via Walvis Bay airport, upward from 1 489 passengers registered in the corresponding month of 2021.

Chart 7: Departures Index for Walvis Bay, Percentage Change



- The Index for **Regional and International departures for Walvis Bay Airport** (Chart 7) declined monthly by 7.5 percent in August 2022, in contrast to a growth of 19.3 percent registered a month earlier.
- In absolute terms, the number of passengers that departed via Walvis Bay airport in August 2022 increased, registering 2 636 passengers upward from 1 442 passengers recorded in the corresponding month of 2021.

Table 1: The indices of international arrivals and departures

Year	Month	Total Airports	Index for Arrivals (Regional & International)	Index for Departures (Regional & International)
2019	Jan	107.8	105.8	109.8
	Feb	103.3	103.6	103.0
	Mar	128.1	129.6	126.5
	Apr	130.4	130.0	130.8
	May	123.7	121.9	125.4
	Jun	107.7	110.7	104.5
	Jul	122.6	130.9	114.1
	Aug	143.1	138.3	147.9
	Sep	128.0	132.7	123.3
	Oct	129.7	129.6	129.7
	Nov	120.3	114.8	125.9
	Dec	109.3	111.5	107.0
2020	Jan	98.2	94.8	101.6
	Feb	92.4	92.6	92.2
	Mar	60.6	57.1	64.1
	Apr	2.0	1.1	3.0
	May	8.2	8.2	8.1
	Jun	9.4	9.1	9.7
	Jul	12.0	11.3	12.7
	Aug	7.8	7.7	8.0
	Sep	7.8	7.3	8.2
	Oct	21.2	22.8	19.6
	Nov	30.5	32.3	28.7
	Dec	34.8	37.3	32.2

Table 1: The indices of international arrivals and departures continue...

Year	Month	Total Airports	Index for Arrivals (Regional & International)	Index for Departures (Regional & International)
2021	Jan	28.3	26.0	30.7
	Feb	19.7	19.2	20.1
	Mar	27.0	27.5	26.5
	Apr	33.9	34.2	33.5
	May	37.5	36.8	38.3
	Jun	26.8	25.6	28.0
	Jul	21.6	22.6	20.6
	Aug	34.1	34.1	34.2
	Sep	42.4	44.8	40.0
	Oct	58.3	61.2	55.4
	Nov	58.4	61.4	55.4
	Dec	43.7	44.3	43.1
2022	Jan	55.2	41.1	69.4
	Feb	55.3	40.2	70.4
	Mar	83.5	61.8	105.5
	Apr	106.6	76.3	137.2
	May	99.5	72.1	127.3
	Jun	72.9	72.8	73.0
	Jul	94.0	101.4	86.5
	Aug	99.4	98.0	100.8

Methodology

- Background:** The information in this report looks at both citizen and non-citizen travelers' arrivals and departures.
- Data sources:** Namibia Airports Company
- Base year:** The volumes have been referenced to 2015 data as of November 2019
- Conversion:** 1 basis point = 0.01 percent