



# Livestock Sectoral Report November 2022

---

Namibia Statistics Agency  
P.O. Box 2133,  
FGI House, Post Street Mall,  
Windhoek, Namibia

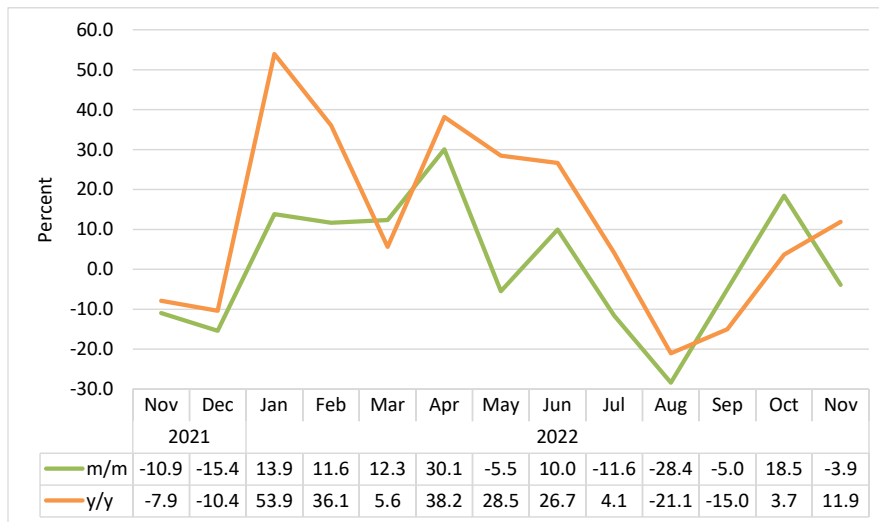
Tel: +264 61 431 3200

Fax: +264 61 431 3253

Email: [info@nsa.org.na](mailto:info@nsa.org.na)

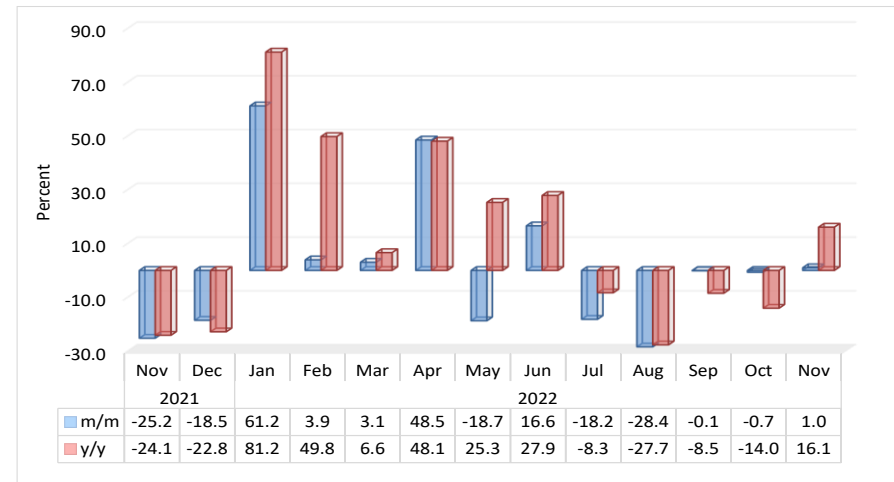
[www.nsa.org.na](http://www.nsa.org.na)

**Chart 1: Livestock Marketed Composite Index, Percentage change**



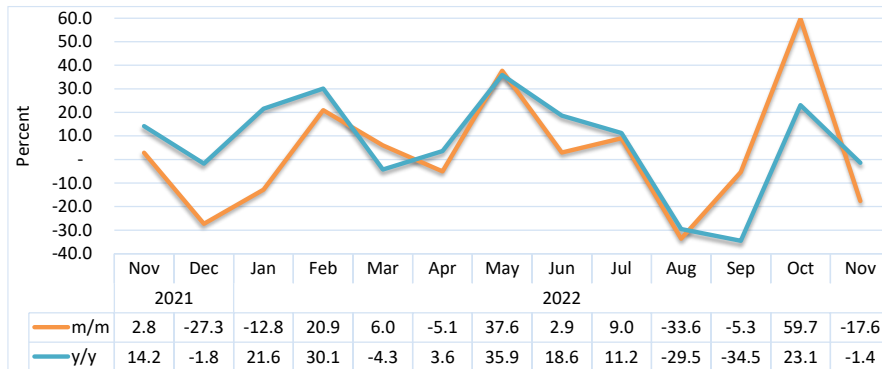
- The **Livestock Marketed Composite Index** recorded a monthly decline of 3.9 percent in November 2022 compared to a growth of 18.5 percent that was posted in the preceding month. However, the index recorded a growth of 11.9 percent, year on year.
- The decline monthly is due to live cattle exported on hoof and ‘Small stock Export approved abattoirs and butchers’ that reduced during the month under review.
- In absolute terms, the total number of livestock marketed for November 2022 stood at 73 770 compared to 68 666 and 58 305 livestock marketed in the preceding month and in the corresponding month of 2021, respectively.

**Chart 2: Cattle Export Approved Abattoirs & Butchers Index, Percentage change**



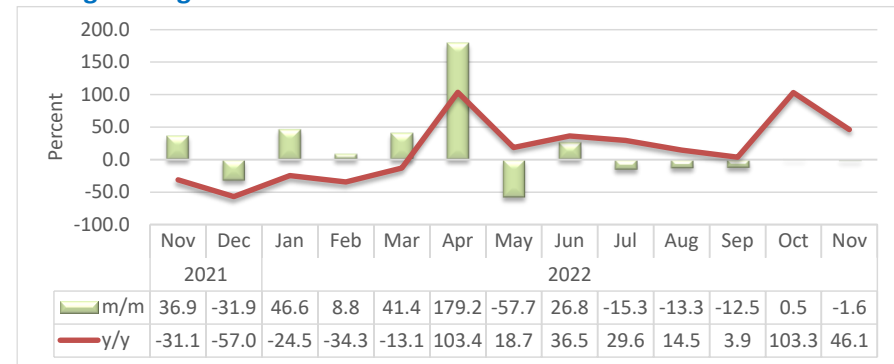
- The Index for ‘**Cattle Export Approved Abattoirs and Butchers**’ in November 2022 registered an increase of 1.0 percent monthly, compared to a marginal decline of 0.7 percent posted a month earlier. Annually, the index recorded an increase of 16.1 percent.
- The number of cattle marketed through export-approved abattoirs and butchers for November 2022 stood at 6 866 animals, of which 97.3 percent (6 681 cattle) were sourced from the Southern Veterinary Cordon Fence (S-VCF), while 2.7 percent (185 cattle) were sourced from the Northern Veterinary Cordon Fence (N-VCF).

**Chart 3: Live Cattle Exported on Hoof Index, Percentage change**



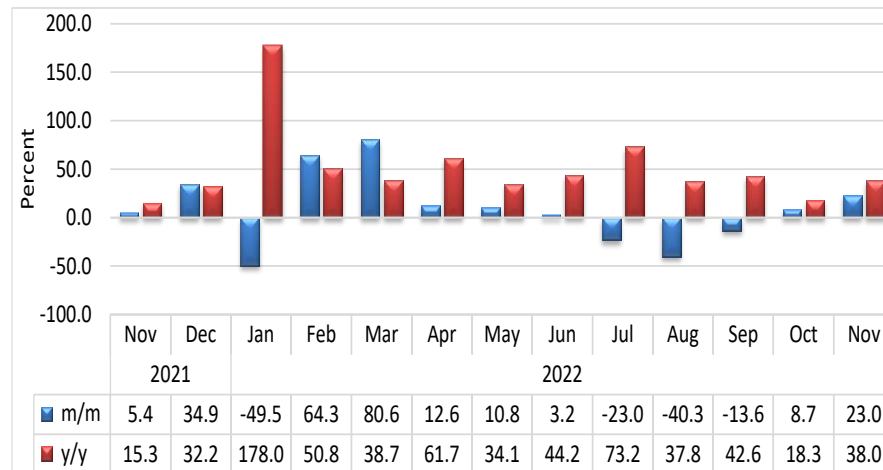
- The Index for **Live Cattle Exported on Hoof** declined by 17.6 percent during the review period, in contrast to a growth of 59.7 percent that was recorded in October 2022. Similarly, the index posted an annual decline of 1.4 percent.
- A total number of 12 908 live cattle on hoof were exported during the month of November 2022, compared to 15 667 cattle exports recorded in October 2022 while 13 092 live cattle were registered a year earlier.
- South Africa was the main destination of exports with 12 892 cattle during the month of November 2022, followed by Botswana in the second place with only 16 cattle.

**Chart 4: Small Stock Export Approved Abattoirs and Butchers Index, Percentage change**



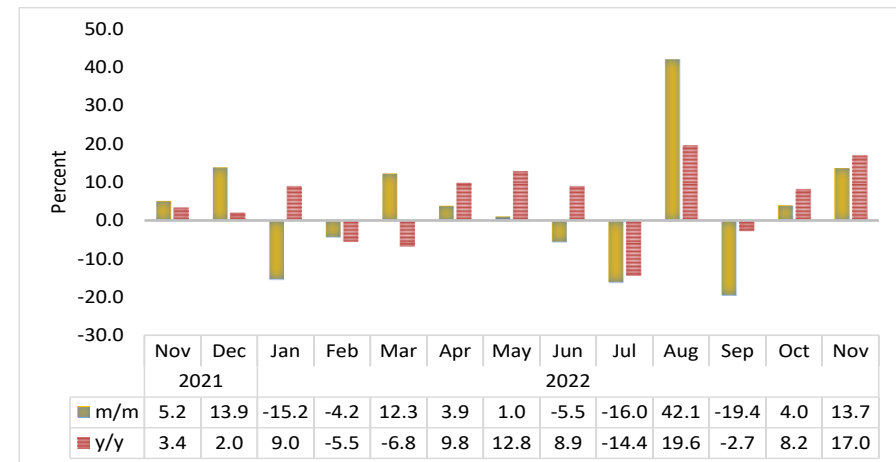
- **'Small Stock Export Approved Abattoirs and Butchers'** index recorded a monthly decline of 1.6 percent in November 2022, in contrast to a growth of 0.5 percent that was registered in October 2022. Additionally, the index annual increase was 46.1 percent.
- A total of 9 843 small stock were marketed through the export approved abattoirs and butchers in November 2022 which were all sourced from Southern Veterinary Cordon Fence (S-VCF).

**Chart 5: Live Small Stock Exported, Percentage change**



- The **Index for Live Small Stock Exported** in November 2023 recorded a growth of 23.0 percent in November 2022 on a monthly basis, compared to an increase of 8.7 percent registered in the preceding month. Additionally, the index registered an increase of 38.0 percent, year on year.
- During the review period, 39 784 small stock were exported. Sheep recorded the largest share of 71.9 percent, while goats contributed a share of 28.1 percent to the total exported live small stock.
- A total of 28 586 sheep were marketed in November 2022, of which 28 455 sheep (99.5%) were exported live to South Africa, while 131 sheep (0.5%) were exported to Botswana.
- Additionally, a total of 11 157 live goats were exported to South Africa during the period under review, while only 41 goats were exported to Botswana respectively.

**Chart 6: Pigs Index, Percentage change**



- For the month of November 2022, the **Index for Pigs** increased on a monthly basis by 13.7 percent, compared to a growth of 4.0 percent posted a month earlier. Similarly, the index recorded a growth of 17.0 percent, year on year.
- The number of pigs slaughtered locally in November 2022 amounted to 4 369, compared to 3 842 pigs slaughtered a month earlier, while 3 735 pigs were slaughtered locally during the corresponding month of 2021.

**Table1. Number of livestock marketed ('000)**

Year	Month	Cattle export abattoirs & butchers	Cattle live exported South Africa & Angola	Small stock Export abattoirs and butchers	Live small stock South Africa and Angola	Pigs slaughtered	Total Livestock Marketed
2018	Jan	5.2	17.8	19.6	13.2	3.8	59.6
	Feb	5.2	31.3	20.4	34.4	3.0	94.2
	Mar	7.8	37.1	33.0	39.3	3.0	120.2
	Apr	9.0	20.2	54.8	56.9	2.9	143.8
	May	7.0	20.6	43.2	64.2	3.7	138.7
	Jun	10.2	25.5	35.7	77.7	3.4	152.4
	Jul	5.3	27.4	33.1	77.3	4.0	147.1
	Aug	6.3	30.5	30.0	59.4	4.1	130.3
	Sep	6.1	28.9	21.5	39.8	4.1	100.4
	Oct	6.3	23.6	25.6	37.7	5.1	98.4
	Nov	7.2	23.7	30.0	40.3	4.2	105.5
	Dec	2.6	21.3	28.2	47.8	3.8	103.7
2019	Jan	1.8	12.0	24.0	27.5	4.5	69.8
	Feb	5.8	17.9	16.8	39.0	3.7	83.2
	Mar	13.5	33.4	33.4	62.9	3.7	146.9
	Apr	11.5	30.7	65.5	77.2	4.3	189.1
	May	18.9	37.4	32.8	79.6	4.1	172.8
	Jun	15.5	28.1	25.6	73.5	3.8	146.5
	Jul	14.5	28.1	22.6	57.1	4.2	126.6
	Aug	17.3	27.0	12.8	46.5	3.7	107.3
	Sep	13.5	22.4	11.3	34.6	3.8	85.5
	Oct	7.9	22.1	10.0	35.1	3.9	78.9
	Nov	8.4	19.0	8.1	27.5	3.8	66.8
	Dec	2.4	11.3	12.1	48.2	4.2	78.1

**Table1: Number of livestock marketed ('000), continue.....**

Year	Month	Cattle export abattoirs & butchers	Cattle live exported South Africa & Angola	Small stock Export abattoirs and butchers	Live small stock South Africa and Angola	Pigs slaughtered	Total Livestock Marketed
2020	Jan	6.0	9.9	10.9	11.3	3.7	41.9
	Feb	6.5	21.3	11.4	18.4	3.4	61.1
	Mar	8.2	17.6	14.8	32.3	4.0	76.8
	Apr	7.9	10.3	27.5	33.7	3.9	83.3
	May	13.2	6.1	13.5	36.4	3.3	72.6
	Jun	9.7	10.0	13.1	37.8	3.8	74.4
	Jul	7.8	19.1	10.9	29.1	4.0	70.9
	Aug	5.6	15.6	8.7	21.7	3.5	55.1
	Sep	5.4	14.7	9.9	16.4	3.7	50.1
	Oct	7.4	12.8	10.9	17.3	3.7	52.0
	Nov	7.8	11.5	9.8	25.0	3.6	57.7
	Dec	6.2	9.7	10.7	29.4	4.2	60.2
2021	Jan	4.3	6.8	8.9	7.1	3.3	30.4
	Feb	5.4	7.7	11.1	21.4	3.7	49.3
	Mar	7.8	11.1	11.9	42.0	4.2	77.0
	Apr	8.3	9.7	14.2	40.6	3.7	76.5
	May	8.0	10.2	10.3	54.2	3.6	86.3
	Jun	9.2	12.1	11.3	52.0	3.5	88.1
	Jul	10.4	14.0	10.1	33.3	3.8	71.7
	Aug	9.5	14.7	9.9	25.0	3.8	63.0
	Sep	7.5	15.0	9.6	20.9	3.8	56.7
	Oct	7.9	12.7	4.9	27.4	3.6	56.5
	Nov	5.9	13.1	6.7	28.8	3.7	58.3
	Dec	4.8	9.5	4.6	38.9	4.3	62.1
2022	Jan	7.8	8.3	6.7	19.6	3.6	46.0
	Feb	8.1	10.0	7.3	32.3	3.5	61.1
	Mar	8.3	10.6	10.4	58.3	3.9	91.4
	Apr	12.4	10.1	28.9	65.6	4.0	121.0
	May	10.0	13.9	12.2	72.7	4.1	112.9
	Jun	11.7	14.3	15.5	75.0	3.8	120.4
	Jul	9.6	15.6	13.1	57.7	3.2	99.3
	Aug	6.9	10.4	11.4	34.5	4.6	67.6
	Sep	6.8	9.8	10.0	29.8	3.7	60.1
	Oct	6.8	15.7	10.0	32.4	3.8	68.7
	Nov	6.9	12.9	9.8	39.8	4.4	73.8

**Table2: Indices of Livestock marketed**

Year	Month	Cattle export abattoirs & butchers	Cattle Live export on hoof	Small stock Export abattoirs and butchers	Live small stock South Africa and Angola	Pigs slaughtered	Composite Index
2018	Jan	51.9	83.5	44.8	27.5	122.4	63.3
	Feb	52.1	146.8	46.6	71.6	94.2	90.0
	Mar	78.8	173.9	75.6	81.8	96.9	114.8
	Apr	90.4	94.5	125.6	118.4	93.5	97.2
	May	70.9	96.4	99.0	133.6	118.7	89.6
	Jun	102.5	119.4	81.9	161.8	107.6	112.5
	Jul	53.4	128.2	75.8	161.1	128.3	94.8
	Aug	63.5	142.9	68.6	123.7	132.3	100.9
	Sep	60.9	135.7	49.2	82.9	129.9	92.0
	Oct	63.6	110.8	58.6	78.5	163.9	85.3
	Nov	73.0	111.0	68.8	84.0	133.0	89.7
	Dec	26.6	99.9	64.6	99.5	120.0	66.2
2019	Jan	18.2	56.4	55.0	57.2	143.9	42.8
	Feb	58.2	83.9	38.5	81.3	116.4	70.1
	Mar	136.2	156.4	76.6	131.0	117.0	138.0
	Apr	116.2	143.8	149.9	160.7	136.2	133.6
	May	190.2	175.2	75.2	165.7	131.4	171.6
	Jun	155.6	131.9	58.7	153.1	120.5	137.8
	Jul	146.4	131.8	51.9	119.0	133.3	130.8
	Aug	174.1	126.7	29.3	96.9	117.6	136.5
	Sep	135.5	104.9	25.9	72.0	120.1	109.5
	Oct	79.4	103.4	22.8	73.1	125.1	84.8
	Nov	84.1	88.9	18.6	57.3	120.5	79.6
	Dec	24.0	53.1	27.6	100.4	133.3	45.2

**Table2: Indices of Livestock marketed, continue...**

Year	Month	Cattle export abattoirs & butchers	Cattle Live export on hoof	Small stock Export abattoirs and butchers	Live small stock South Africa and Angola	Pigs slaughtered	Composite Index
2020	Jan	60.6	46.6	24.9	23.6	118.7	51.3
	Feb	65.1	99.8	26.2	38.4	109.9	74.1
	Mar	82.2	82.7	33.8	67.3	126.1	78.7
	Apr	79.5	48.1	63.0	70.3	124.5	67.2
	May	133.1	28.7	31.0	75.8	105.3	80.3
	Jun	97.3	46.9	29.9	78.8	120.6	72.4
	Jul	78.4	89.6	25.0	60.5	128.9	78.4
	Aug	56.4	73.3	19.9	45.1	112.7	60.7
	Sep	54.8	68.7	22.6	34.1	119.2	57.7
	Oct	74.2	59.9	24.9	36.0	117.1	63.1
	Nov	78.5	53.8	22.4	52.1	115.2	63.8
	Dec	62.9	45.4	24.4	61.3	132.9	55.5
2021	Jan	43.2	32.0	20.4	14.7	105.5	36.8
	Feb	54.3	36.2	25.5	44.6	116.5	46.4
	Mar	78.6	52.1	27.3	87.5	132.6	67.2
	Apr	84.0	45.7	32.5	84.5	116.9	66.8
	May	80.7	47.9	23.6	112.9	114.9	67.9
	Jun	92.2	56.5	26.0	108.3	112.5	75.7
	Jul	105.2	65.7	23.2	69.4	120.1	81.4
	Aug	95.4	68.9	22.8	52.1	122.2	77.0
	Sep	75.3	70.2	20.5	43.5	121.1	67.8
	Oct	79.6	59.7	9.9	57.0	113.2	65.8
	Nov	59.6	61.4	14.1	60.0	119.1	58.6
	Dec	48.5	44.6	6.8	81.0	135.6	49.4
2022	Jan	78.2	38.9	15.4	40.9	115.0	56.6
	Feb	81.3	47.0	16.8	67.2	110.1	63.2
	Mar	83.8	49.9	23.7	121.4	123.6	71.0
	Apr	124.4	47.3	66.2	136.6	128.4	92.3
	May	101.1	65.1	28.0	151.4	129.7	87.2
	Jun	117.9	67.0	35.5	156.2	122.5	95.9
	Jul	96.4	73.1	30.1	120.3	102.9	84.8
	Aug	69.0	48.6	26.1	71.8	146.2	60.7
	Sep	68.9	46.0	22.8	62.0	117.8	57.7
	Oct	68.4	73.4	22.9	67.4	122.5	68.4
	Nov	69.1	60.5	22.5	82.9	139.3	65.7

- Data Sources** : The data was obtained from the Meat Board of Namibia.
- Base year** : Livestock Sectoral report is harmonised with the quarterly and annual national accounts base year 2015.
- Calculations of index** : The index is calculated based on the 2015 base year volumes and 2015 weights. The index is a magnitude of the volume Changes over time, with reference to the volume of the base year 2015. The index is calculated as a ratio of the volume of a specific component in a specific month to the total volume of that component in 2015.
- Conversion** : 1 basis point = 0.01 percent