

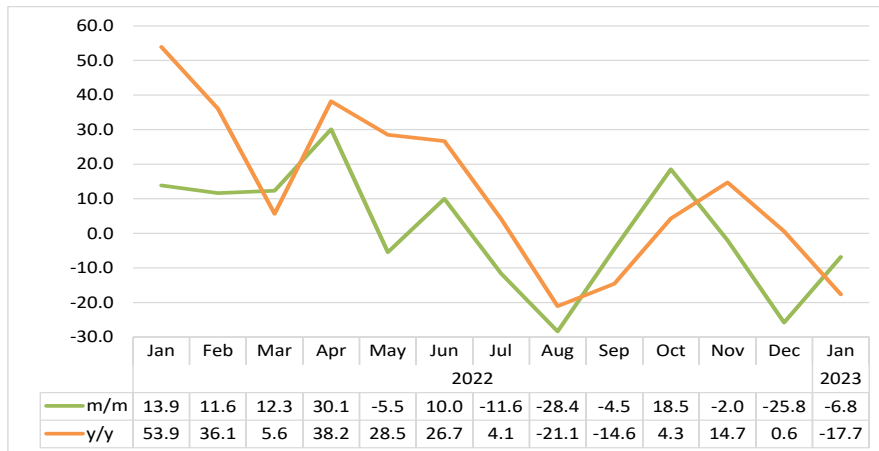


Namibia Statistics
Agency

LIVESTOCK REPORT

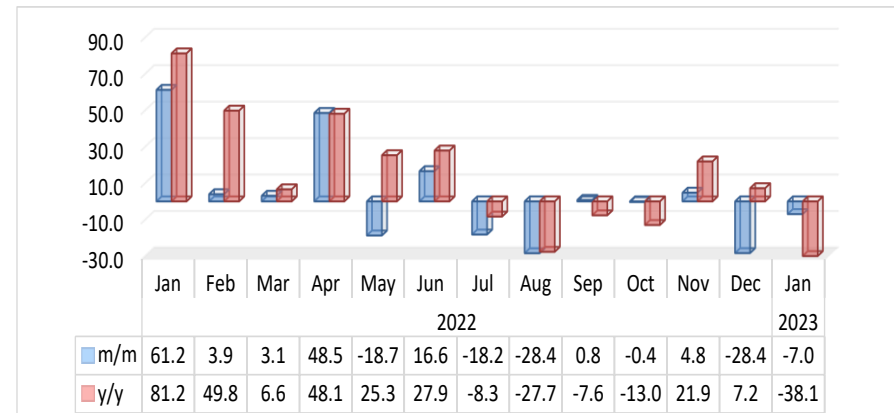
JANUARY 2023

Chart 1: Livestock Marketed Composite Index, Percent



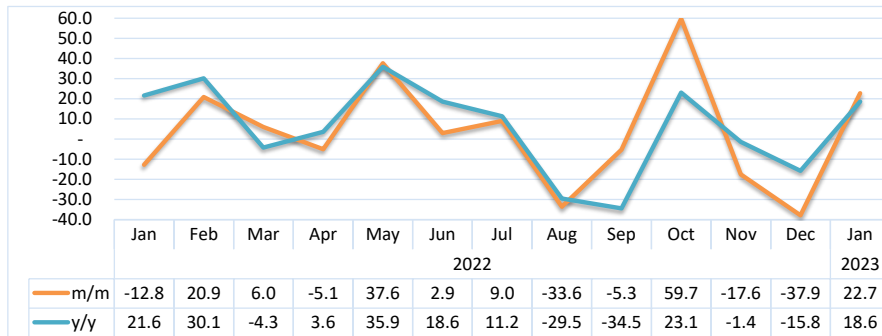
- The **Livestock Marketed Composite Index** recorded a monthly decline of 6.8 percent in January 2023 compared to a reduction of 25.8 percent in the preceding month. Additionally, the index recorded a decline of 17.7 percent, year on year.
- The decline registered monthly was due to Cattle export approved abattoirs and butchers’, ‘Small stock export approved abattoirs and butchers’ and Live small stock export that decreased.
- In absolute terms, the total number of livestock marketed for January 2023 stood at 44 469 compared to 71 149 and 46 034 livestock that was marketed in the preceding month and in the corresponding month of 2022, respectively.

Chart 2: Cattle Export Approved Abattoirs & Butchers Index, Percent



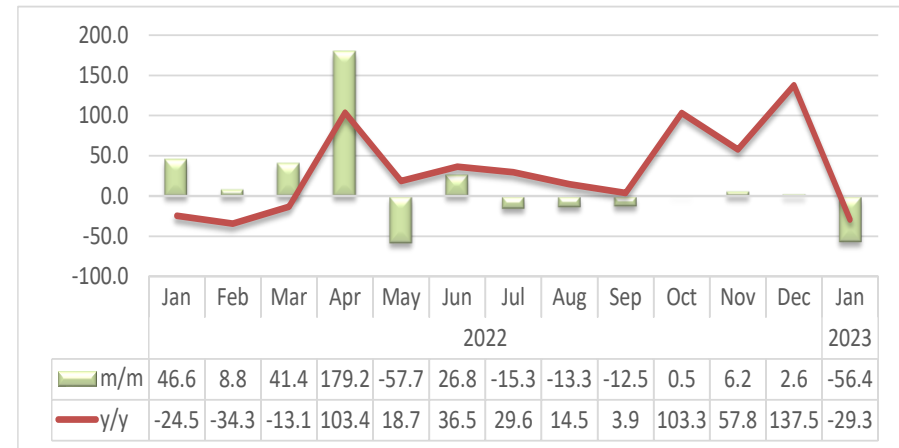
- The Index for **Cattle Export Approved Abattoirs and Butchers** in January 2023 recorded a decline of 7.0 percent monthly, compared to a decline of 28.4 percent posted a month earlier. Moreover, the index recorded a decline of 38.1 percent, year on year.
- The number of cattle marketed recorded through export approved abattoirs and butchers for January 2023 was 4 805, of which 88.6 percent (4 255 cattle) were sourced from the Southern Veterinary Cordon Fence (S-VCF), while 11.4 percent (550 cattle) were sourced from the Northern Veterinary Cordon Fence (N-VCF).

Chart 3: Live Cattle Exported on Hoof Index, Percent



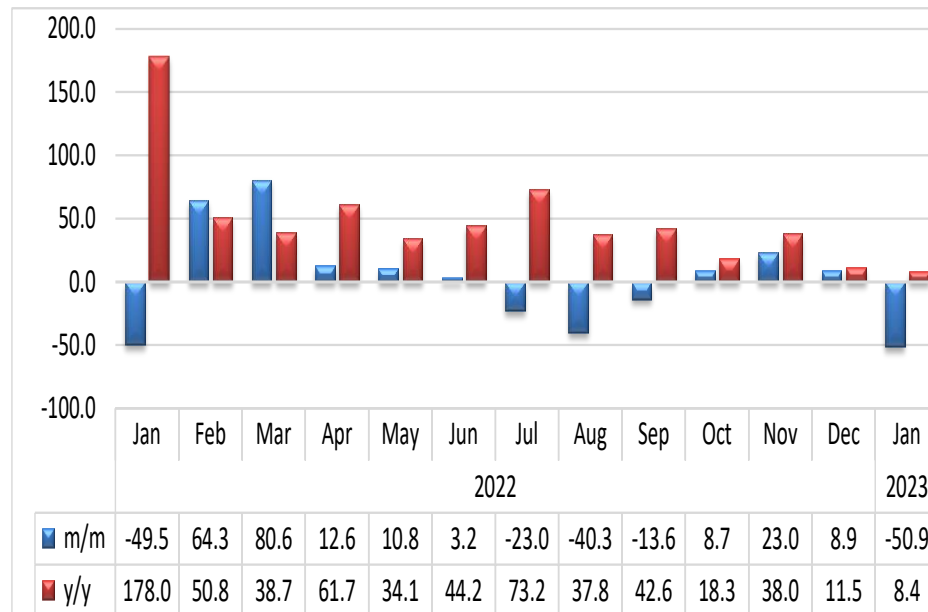
- The Index for **Live Cattle Exported on Hoof** recorded a monthly increase of 22.7 percent during the review month, compared to a reduction of 37.9 percent that was recorded in December 2022. Similarly, the index posted an annual growth of 18.6 percent.
- A total number of 9 840 live cattle on hoof were exported during the month of January 2023, compared to 8 018 cattle export recorded in December 2022 while 8 300 live cattle export were registered a year earlier. All live cattle for January 2023 were exported to South Africa.

Chart 4: Small Stock Export Approved Abattoirs and Butchers Index, Percent



- The **Small Stock Export Approved Abattoirs and Butchers Index** recorded a monthly decline of 56.4 percent in January 2023 compared to an increase of 2.6 percent that was registered in December 2022. Furthermore, the index declined by 29.3 percent year on year.
- A total of 4 759 small stock were marketed through the export approved abattoirs and butchers in January 2023, of which 99.9 percent (4 753 small stock) were sourced from Southern Veterinary Cordon Fence (S-VCF) and only 6 small stock were sourced from Northern Veterinary Cordon Fence (N-VCF).

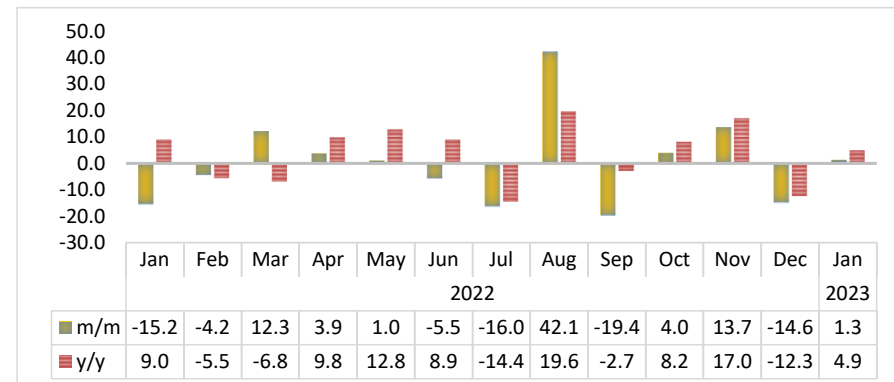
Chart 5: Live Small Stock Export, Percent



- The **Index for Live Small Stock Export** recorded a decline of 50.9 percent in January 2023 on a monthly basis, compared to an increase of 8.9 percent registered in December 2022. On annual basis, the index registered an increase of 8.4 percent.
- During the review period, 21 283 small stock were exported. Sheep recorded the largest share of 75.6 percent, while goats accounted for a share of 24.4 percent of total live small stock export.

- A total of 16 085 sheep were marketed in January 2023, of which 16 065 sheep (99.9%) were exported live to South Africa, while 20 sheep (0.12%) were exported to Zambia.
- Finally, 5 149 live goats were exported live to South Africa during the review month, followed by Botswana with 29 goats and Zambia which demanded 20 goats.

Chart 6: Pigs Index, Percentage change



- For the month of January 2023, the **Index for Pigs** increased on a monthly basis by 1.3 percent, compared to a decline of 14.6 percent registered a month earlier. Similarly, the index recorded an increase of 4.9 percent, year on year.
- The number of pigs slaughtered locally in January 2023 stood at 3 782, compared to 3 732 pigs and 3 606 pigs slaughtered locally in December 2022 and January 2022, respectively.

Table1. Number of livestock marketed ('000)

Year	Month	Cattle export abattoirs & butchers	Cattle live exported South Africa & Angola	Small stock Export abattoirs and butchers	Live small stock South Africa and Angola	Pigs slaughtered	Total Livestock Marketed
2020	Jan	6.0	9.9	10.9	11.3	3.7	41.9
	Feb	6.5	21.3	11.4	18.4	3.4	61.1
	Mar	8.2	17.6	14.8	32.3	4.0	76.8
	Apr	7.9	10.3	27.5	33.7	3.9	83.3
	May	13.2	6.1	13.5	36.4	3.3	72.6
	Jun	9.7	10.0	13.1	37.8	3.8	74.4
	Jul	7.8	19.1	10.9	29.1	4.0	70.9
	Aug	5.6	15.6	8.7	21.7	3.5	55.1
	Sep	5.4	14.7	9.9	16.4	3.7	50.1
	Oct	7.4	12.8	10.9	17.3	3.7	52.0
	Nov	7.8	11.5	9.8	25.0	3.6	57.7
	Dec	6.2	9.7	10.7	29.4	4.2	60.2
2021	Jan	4.3	6.8	8.9	7.1	3.3	30.4
	Feb	5.4	7.7	11.1	21.4	3.7	49.3
	Mar	7.8	11.1	11.9	42.0	4.2	77.0
	Apr	8.3	9.7	14.2	40.6	3.7	76.5
	May	8.0	10.2	10.3	54.2	3.6	86.3
	Jun	9.2	12.1	11.3	52.0	3.5	88.1
	Jul	10.4	14.0	10.1	33.3	3.8	71.7
	Aug	9.5	14.7	9.9	25.0	3.8	63.0
	Sep	7.5	15.0	9.6	20.9	3.8	56.7
	Oct	7.9	12.7	4.9	27.4	3.6	56.5
	Nov	5.9	13.1	6.7	28.8	3.7	58.3
	Dec	4.8	9.5	4.6	38.9	4.3	62.1

Table1: Number of livestock marketed ('000), continue.....

Year	Month	Cattle export abattoirs & butchers	Cattle live exported South Africa & Angola	Small stock Export abattoirs and butchers	Live small stock South Africa and Angola	Pigs slaughtered	Total Livestock Marketed
2022	Jan	7.8	8.3	6.7	19.6	3.6	46.0
	Feb	8.1	10.0	7.3	32.3	3.5	61.1
	Mar	8.3	10.6	10.4	58.3	3.9	91.4
	Apr	12.4	10.1	28.9	65.6	4.0	121.0
	May	10.0	13.9	12.2	72.7	4.1	112.9
	Jun	11.7	14.3	15.5	75.0	3.8	120.4
	Jul	9.6	15.6	13.1	57.7	3.2	99.3
	Aug	6.9	10.4	11.4	34.5	4.6	67.6
	Sep	6.9	9.8	10.0	29.8	3.7	60.1
	Oct	6.9	15.7	10.0	32.4	3.8	68.8
	Nov	7.2	12.9	10.6	39.8	4.4	74.9
	Dec	5.2	8.0	10.9	43.3	3.7	71.1
2023	Jan	4.8	9.8	4.8	21.3	3.8	44.5

Table2: Indices of Livestock marketed

Year	Month	Cattle export abattoirs & butchers	Cattle Live export on hoof	Small stock Export abattoirs and butchers	Live small stock South Africa and Angola	Pigs slaughtered	Composite Index
2020	Jan	60.6	46.6	24.9	23.6	118.7	51.3
	Feb	65.1	99.8	26.2	38.4	109.9	74.1
	Mar	82.2	82.7	33.8	67.3	126.1	78.7
	Apr	79.5	48.1	63.0	70.3	124.5	67.2
	May	133.1	28.7	31.0	75.8	105.3	80.3
	Jun	97.3	46.9	29.9	78.8	120.6	72.4
	Jul	78.4	89.6	25.0	60.5	128.9	78.4
	Aug	56.4	73.3	19.9	45.1	112.7	60.7
	Sep	54.8	68.7	22.6	34.1	119.2	57.7
	Oct	74.2	59.9	24.9	36.0	117.1	63.1
	Nov	78.5	53.8	22.4	52.1	115.2	63.8
	Dec	62.9	45.4	24.4	61.3	132.9	55.5
2021	Jan	43.2	32.0	20.4	14.7	105.5	36.8
	Feb	54.3	36.2	25.5	44.6	116.5	46.4
	Mar	78.6	52.1	27.3	87.5	132.6	67.2
	Apr	84.0	45.7	32.5	84.5	116.9	66.8
	May	80.7	47.9	23.6	112.9	114.9	67.9
	Jun	92.2	56.5	26.0	108.3	112.5	75.7
	Jul	105.2	65.7	23.2	69.4	120.1	81.4
	Aug	95.4	68.9	22.8	52.1	122.2	77.0
	Sep	75.3	70.2	22.0	43.5	121.1	67.9
	Oct	79.6	59.7	11.3	57.0	113.2	65.9
	Nov	59.6	61.4	15.4	60.0	119.1	58.7
	Dec	48.5	44.6	10.5	81.0	135.6	49.7

Table2: Indices of Livestock marketed, continue...

Year	Month	Cattle export abattoirs & butchers	Cattle Live export on hoof	Small stock Export abattoirs and butchers	Live small stock South Africa and Angola	Pigs slaughtered	Composite Index
2022	Jan	78.2	38.9	15.4	40.9	115.0	56.6
	Feb	81.3	47.0	16.8	67.2	110.1	63.2
	Mar	83.8	49.9	23.7	121.4	123.6	71.0
	Apr	124.4	47.3	66.2	136.6	128.4	92.3
	May	101.1	65.1	28.0	151.4	129.7	87.2
	Jun	117.9	67.0	35.5	156.2	122.5	95.9
	Jul	96.4	73.1	30.1	120.3	102.9	84.8
	Aug	69.0	48.6	26.1	71.8	146.2	60.7
	Sep	69.6	46.0	22.8	62.0	117.8	58.0
	Oct	69.3	73.4	22.9	67.4	122.5	68.8
	Nov	72.6	60.5	24.3	82.9	139.3	67.4
	Dec	52.0	37.6	25.0	90.3	119.0	50.0
2023	Jan	48.4	46.1	10.9	44.3	120.6	46.6

- Data Sources** : The data was obtained from the Meat Board of Namibia.
- Base year** : Livestock Sectoral report is harmonised with the quarterly and annual national accounts base year 2015.
- Calculations of index** : The index is calculated based on the 2015 base year volumes and 2015 weights. The index is a magnitude of the volume Changes over time, with reference to the volume of the base year 2015. The index is calculated as a ratio of the volume of a specific component in a specific month to the total volume of that component in 2015.
- Conversion** : 1 basis point = 0.01 percent