



Livestock Sectoral Report

September 2022

Namibia Statistics Agency

Tel: +264 61 431 3200

P.O. Box 2133

Fax: +264 61 431 3253

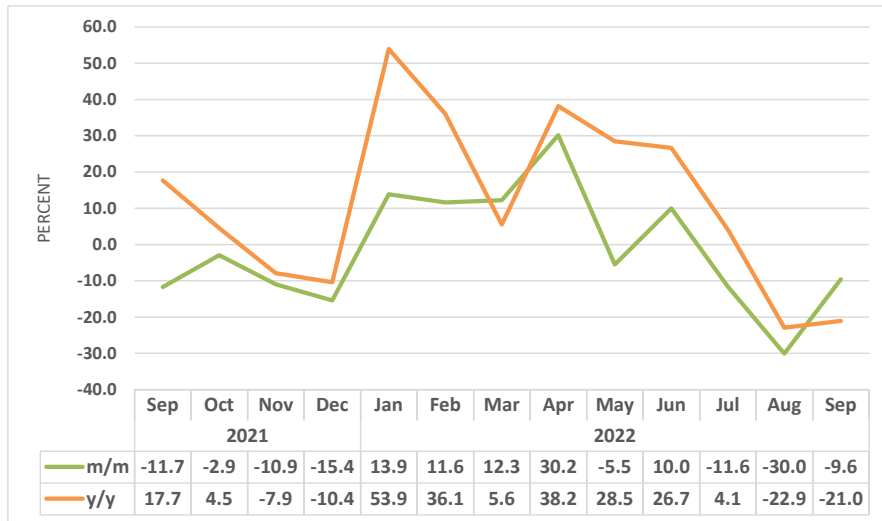
FGI House, Post Street Mall

Email: info@nsa.org.na

www.nsa.org.na

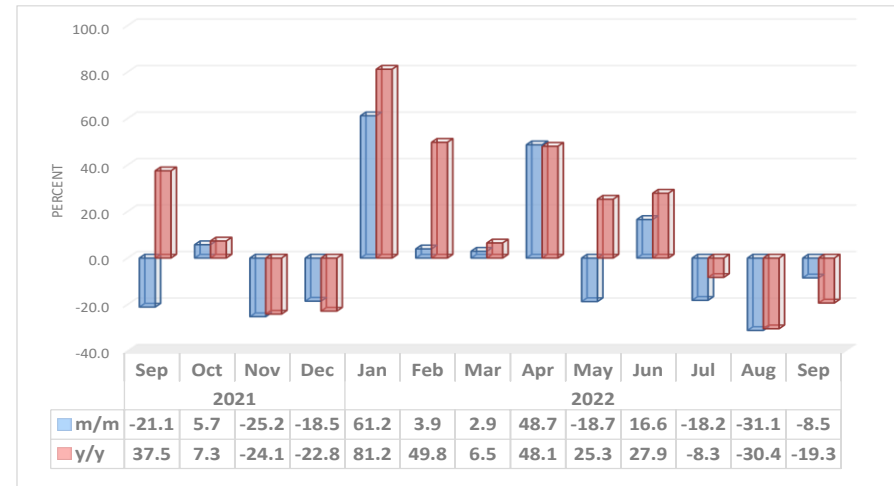
Windhoek Namibia

Chart 1: Livestock Marketed Composite Index, Percent



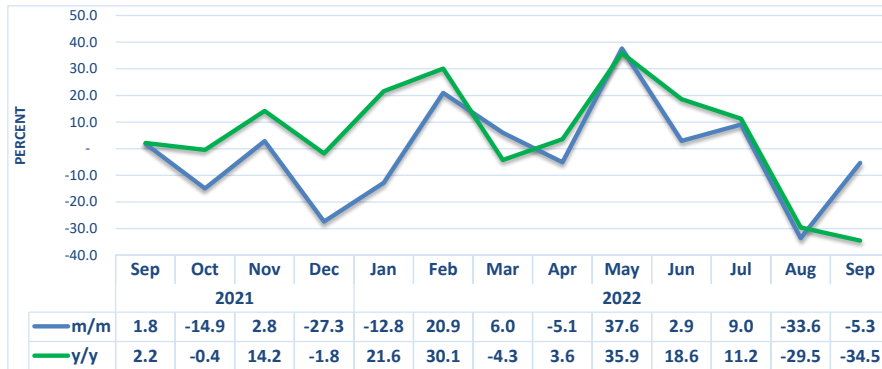
- The **Livestock Marketed Composite Index** declined monthly by 9.6 percent in September 2022, better off when compared to a decline of 30.0 percent that was recorded during the preceding month. Furthermore, the index declined by 21.0 percent year on year.
- The improvement in the monthly decline in the index was observed in all the categories of livestock marketed. The lifting of FMD-related restrictions on livestock movements by South Africa resulted in an improvement of the index during the review month.
- In absolute terms, the total number of livestock marketed for September 2022 stood at 56 111, as opposed to 65 693 livestock recorded during the preceding month, while 56 703 livestock were marketed during the corresponding month of 2021.

Chart 2: Cattle Export Approved Abattoirs & Butchers Index, Percent



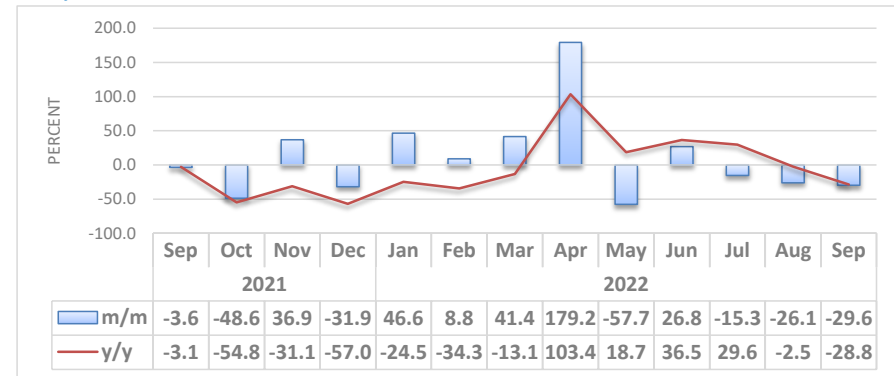
- The Index for '**Cattle Export Approved Abattoirs and Butchers**' in September 2022 declined by 8.5 percent monthly, an improvement compared to a decline of 31.1 percent recorded a month earlier. Annually, the index recorded a decline of 19.3 percent.
- The number of cattle marketed through export approved abattoirs and butchers for September 2022 went down by 6 032 animals, of which 88.2 percent (5 323 cattle) were sourced from the Southern Veterinary Cordon Fence (S-VCF), while 11.8 percent (709 cattle) were from the Northern Veterinary Cordon Fence (N-VCF).

Chart 3: Live Cattle Exported on Hoof Index, Percent



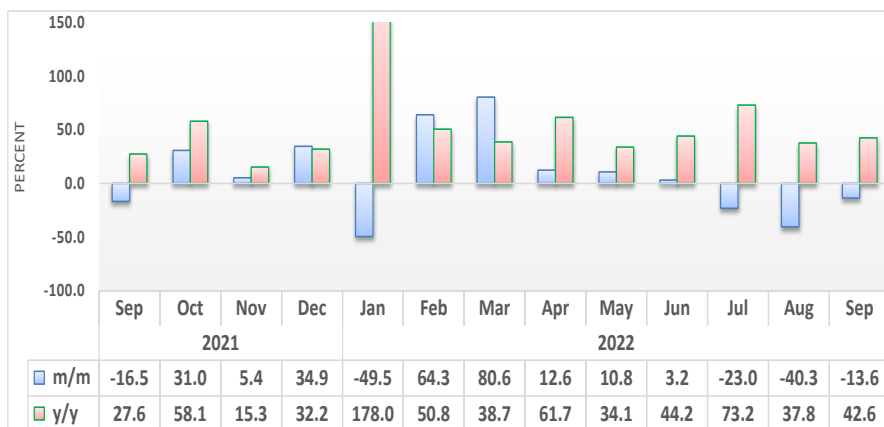
- The Index for **Live Cattle Exported on Hoof** on a monthly basis registered a decline of 5.3 percent during the review period, compared to a decline of 33.6 percent that was recorded in August 2022. The index posted an annual reduction of 34.5 percent.
- A total number of 9 808 of live cattle on hoof were exported during the month of September 2022, compared to 10 357 cattle export recorded in August 2022 while 14 967 live cattle were registered a year earlier.
- South Africa was the main destination of export with 9 721 cattle during the month of September 2022, followed by Angola in the second place posting 87 cattle.

Chart 4: Small Stock Export Approved Abattoirs and Butchers Index, Percent



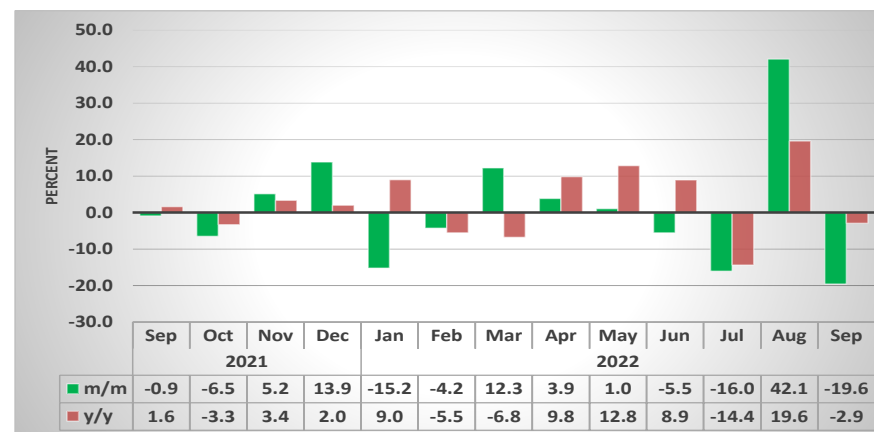
- On a monthly basis, the index for **‘Small Stock Export Approved Abattoirs and Butchers’** declined by 29.6 percent in September 2022, compared to a drop of 26.1 percent that was recorded in August 2022. Furthermore, the annual index declined by 28.8 percent.
- A total of 6 821 small stock were marketed through the export approved abattoirs and butchers in September 2022, of which 5 807 were sheep and only 8 were goats. Sheep and goats were all sourced from the Southern Veterinary Cordon Fence (S-VCF).

Chart 5: Live Small Stock Exported, Percent



- On a monthly basis, the **Index for Live Small Stock Exported** recorded a decline of 13.6 percent in September 2022, compared to a reduction of 40.3 percent registered a month earlier. However, the index registered an increase of 42.6 percent year on year.
- During the review period, 29 762 small stocks were exported live in September 2022. Sheep scooped the largest share of 60.5 percent, while goats contributed 39.5 percent of the total exported live small stock.
- A total of 18 020 sheep were marketed in September 2022, of which 18 018 sheep were exported live to South Africa, while Angola sourced only 2 sheep from Namibia, respectively.
- Additionally, a total of 11 742 live goats were solely exported to South Africa during the period under review.

Chart 6: Pigs Index, Percent



- During the month of September 2022, the **Index for Pigs** on a monthly basis declined by 19.6 percent, compared to an increase of 42.1 percent registered in the preceding month. Similarly, the index recorded a decline of 2.9 percent year on year.
- The number of pigs slaughtered locally stood at 3 688 pigs in September 2022, compared to 4 585 pigs slaughtered a month earlier, while 3 799 pigs were slaughtered locally during the corresponding month of 2021.

Table1. Number of livestock marketed ('000)

Year	Month	Cattle export abattoirs & butchers	Cattle live exported South Africa & Angola	Small stock Export abattoirs and butchers	Live small stock South Africa and Angola	Pigs slaughtered	Total Livestock Marketed
2018	Jan	5.2	17.8	19.6	13.2	3.8	59.6
	Feb	5.2	31.3	20.4	34.4	3.0	94.2
	Mar	7.8	37.1	33.0	39.3	3.0	120.2
	Apr	9.0	20.2	54.8	56.9	2.9	143.8
	May	7.0	20.6	43.2	64.2	3.7	138.7
	Jun	10.2	25.5	35.7	77.7	3.4	152.4
	Jul	5.3	27.4	33.1	77.3	4.0	147.1
	Aug	6.3	30.5	30.0	59.4	4.1	130.3
	Sep	6.1	28.9	21.5	39.8	4.1	100.4
	Oct	6.3	23.6	25.6	37.7	5.1	98.4
	Nov	7.2	23.7	30.0	40.3	4.2	105.5
	Dec	2.6	21.3	28.2	47.8	3.8	103.7
2019	Jan	1.8	12.0	24.0	27.5	4.5	69.8
	Feb	5.8	17.9	16.8	39.0	3.7	83.2
	Mar	13.5	33.4	33.4	62.9	3.7	146.9
	Apr	11.5	30.7	65.5	77.2	4.3	189.1
	May	18.9	37.4	32.8	79.6	4.1	172.8
	Jun	15.5	28.1	25.6	73.5	3.8	146.5
	Jul	14.5	28.1	22.6	57.1	4.2	126.6
	Aug	17.3	27.0	12.8	46.5	3.7	107.3
	Sep	13.5	22.4	11.3	34.6	3.8	85.5
	Oct	7.9	22.1	10.0	35.1	3.9	78.9
	Nov	8.4	19.0	8.1	27.5	3.8	66.8
	Dec	2.4	11.3	12.1	48.2	4.2	78.1

Table1: Number of livestock marketed ('000), continue.....

Year	Month	Cattle export abattoirs & butchers	Cattle live exported South Africa & Angola	Small stock Export abattoirs and butchers	Live small stock South Africa and Angola	Pigs slaughtered	Total Livestock Marketed
2020	Jan	6.0	9.9	10.9	11.3	3.7	41.9
	Feb	6.5	21.3	11.4	18.4	3.4	61.1
	Mar	8.2	17.6	14.8	32.3	4.0	76.8
	Apr	7.9	10.3	27.5	33.7	3.9	83.3
	May	13.2	6.1	13.5	36.4	3.3	72.6
	Jun	9.7	10.0	13.1	37.8	3.8	74.4
	Jul	7.8	19.1	10.9	29.1	4.0	70.9
	Aug	5.6	15.6	8.7	21.7	3.5	55.1
	Sep	5.4	14.7	9.9	16.4	3.7	50.1
	Oct	7.4	12.8	10.9	17.3	3.7	52.0
	Nov	7.8	11.5	9.8	25.0	3.6	57.7
	Dec	6.2	9.7	10.7	29.4	4.2	60.2
2021	Jan	4.3	6.8	8.9	7.1	3.3	30.4
	Feb	5.4	7.7	11.1	21.4	3.7	49.3
	Mar	7.8	11.1	11.9	42.0	4.2	77.0
	Apr	8.3	9.7	14.2	40.6	3.7	76.5
	May	8.0	10.2	10.3	54.2	3.6	86.3
	Jun	9.2	12.1	11.3	52.0	3.5	88.1
	Jul	10.4	14.0	10.1	33.3	3.8	71.7
	Aug	9.5	14.7	9.9	25.0	3.8	63.0
	Sep	7.5	15.0	9.6	20.9	3.8	56.7
	Oct	7.9	12.7	4.9	27.4	3.6	56.5
	Nov	5.9	13.1	6.7	28.8	3.7	58.3
	Dec	4.8	9.5	4.6	38.9	4.3	62.1
2022	Jan	7.8	8.3	6.7	19.6	3.6	46.0
	Feb	8.1	10.0	7.3	32.3	3.5	61.1
	Mar	8.3	10.6	10.4	58.3	3.9	91.4
	Apr	12.4	10.1	28.9	65.6	4.0	121.0
	May	10.0	13.9	12.2	72.7	4.1	112.9
	Jun	11.7	14.3	15.5	75.0	3.8	120.4
	Jul	9.6	15.6	13.1	57.7	3.2	99.3
	Aug	6.6	10.4	9.7	34.5	4.6	65.7
	Sep	6.0	9.8	6.8	29.8	3.7	56.1

Table2: Indices of Livestock marketed

Year	Month	Cattle export abattoirs & butchers	Cattle Live export on hoof	Small stock Export abattoirs and butchers	Live small stock South Africa and Angola	Pigs slaughtered	Composite Index
2018	Jan	51.9	83.5	44.8	27.5	122.4	63.3
	Feb	52.1	146.8	46.6	71.6	94.2	90.0
	Mar	78.8	173.9	75.6	81.8	96.9	114.8
	Apr	90.4	94.5	125.6	118.4	93.5	97.2
	May	70.9	96.4	99.0	133.6	118.7	89.6
	Jun	102.5	119.4	81.9	161.8	107.6	112.5
	Jul	53.4	128.2	75.8	161.1	128.3	94.8
	Aug	63.5	142.9	68.6	123.7	132.3	100.9
	Sep	60.9	135.7	49.2	82.9	129.9	92.0
	Oct	63.6	110.8	58.6	78.5	163.9	85.3
	Nov	73.0	111.0	68.8	84.0	133.0	89.7
	Dec	26.6	99.9	64.6	99.5	120.0	66.2
2019	Jan	18.2	56.4	55.0	57.2	143.9	42.8
	Feb	58.2	83.9	38.5	81.3	116.4	70.1
	Mar	136.2	156.4	76.6	131.0	117.0	138.0
	Apr	116.2	143.8	149.9	160.7	136.2	133.6
	May	190.2	175.2	75.2	165.7	131.4	171.6
	Jun	155.6	131.9	58.7	153.1	120.5	137.8
	Jul	146.4	131.8	51.9	119.0	133.3	130.8
	Aug	174.1	126.7	29.3	96.9	117.6	136.5
	Sep	135.5	104.9	25.9	72.0	120.1	109.5
	Oct	79.4	103.4	22.8	73.1	125.1	84.8
	Nov	84.1	88.9	18.6	57.3	120.5	79.6
	Dec	24.0	53.1	27.6	100.4	133.3	45.2

Table2: Indices of Livestock marketed, continue...

Year	Month	Cattle export abattoirs & butchers	Cattle Live export on hoof	Small stock Export abattoirs and butchers	Live small stock South Africa and Angola	Pigs slaughtered	Composite Index
2020	Jan	60.6	46.6	24.9	23.6	118.7	51.3
	Feb	65.1	99.8	26.2	38.4	109.9	74.1
	Mar	82.2	82.7	33.8	67.3	126.1	78.7
	Apr	79.5	48.1	63.0	70.3	124.5	67.2
	May	133.1	28.7	31.0	75.8	105.3	80.3
	Jun	97.3	46.9	29.9	78.8	120.6	72.4
	Jul	78.4	89.6	25.0	60.5	128.9	78.4
	Aug	56.4	73.3	19.9	45.1	112.7	60.7
	Sep	54.8	68.7	22.6	34.1	119.2	57.7
	Oct	74.2	59.9	24.9	36.0	117.1	63.1
	Nov	78.5	53.8	22.4	52.1	115.2	63.8
	Dec	62.9	45.4	24.4	61.3	132.9	55.5
2021	Jan	43.2	32.0	20.4	14.7	105.5	36.8
	Feb	54.3	36.2	25.5	44.6	116.5	46.4
	Mar	78.6	52.1	27.3	87.5	132.6	67.2
	Apr	84.0	45.7	32.5	84.5	116.9	66.8
	May	80.7	47.9	23.6	112.9	114.9	67.9
	Jun	92.2	56.5	26.0	108.3	112.5	75.7
	Jul	105.2	65.7	23.2	69.4	120.1	81.4
	Aug	95.4	68.9	22.8	52.1	122.2	77.0
	Sep	75.3	70.2	20.5	43.5	121.1	67.8
	Oct	79.6	59.7	9.9	57.0	113.2	65.8
	Nov	59.6	61.4	14.1	60.0	119.1	58.6
	Dec	48.5	44.6	6.8	81.0	135.6	49.4
2022	Jan	78.2	38.9	15.4	40.9	115.0	56.6
	Feb	81.3	47.0	16.8	67.2	110.1	63.2
	Mar	83.7	49.9	23.7	121.4	123.6	70.9
	Apr	124.4	47.3	66.2	136.6	128.4	92.3
	May	101.1	65.1	28.0	151.4	129.7	87.2
	Jun	117.9	67.0	35.5	156.2	122.5	95.9
	Jul	96.4	73.1	30.1	120.3	102.9	84.8
	Aug	66.4	48.6	22.2	71.8	146.2	59.3
	Sep	60.7	46.0	15.6	62.0	117.6	53.6

- Data Sources** : The data was obtained from the Meat Board of Namibia.
- Base year** : Livestock Sectoral report is harmonised with the quarterly and annual national accounts base year 2015.
- Calculations of index** : The index is calculated based on the 2015 base year volumes and 2015 weights. The index is a magnitude of the volume Changes over time, with reference to the volume of the base year 2015. The index is calculated as a ratio of the volume of a specific component in a specific month to the total volume of that component in 2015.
- Conversion** : 1 basis point = 0.01 percent