



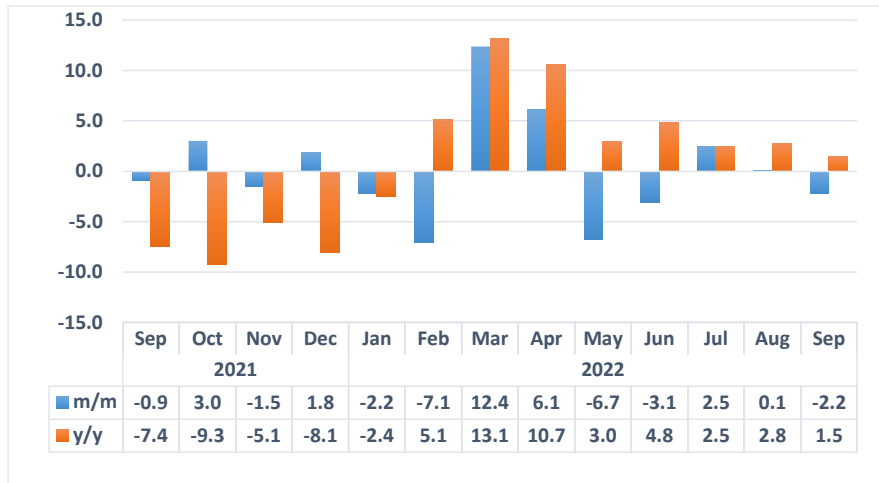
# Electricity Sectoral Report

## September 2022

---

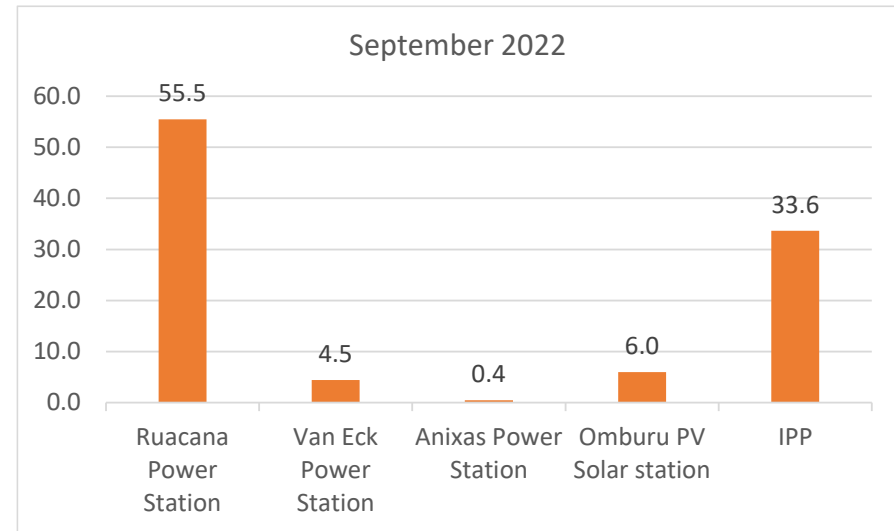
Namibia Statistics Agency  
Tel: +264 61 431 3200  
P.O. Box 2133  
Fax: +264 61 431 3253

**Chart 1: Electricity Sources Composite Index, Percent**



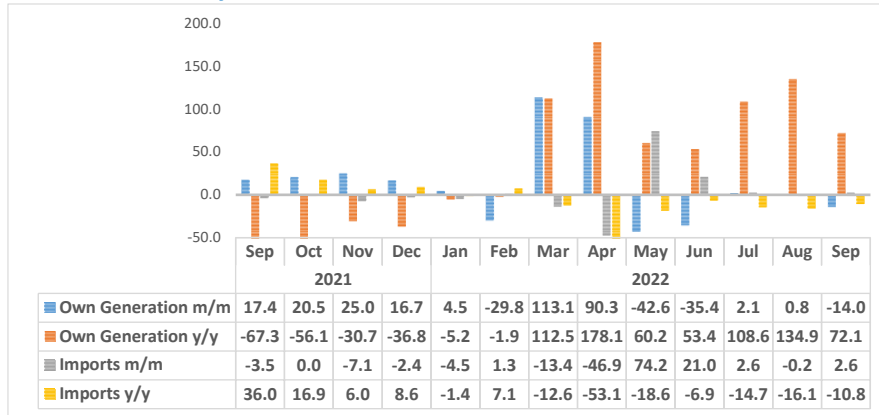
- The **Electricity Sources Composite Index**, which is composed of own generation (local production) and imported electricity for the month of September 2022, posted a decline of 2.2 percent compared to a growth of 0.1 percent recorded during the preceding month. While, on yearly basis, the index recorded an increase of 1.5 percent.
- The monthly decline was derived from own generation of electricity which registered a reduction of 14.0 percent. Whereas import recorded an increase of 2.6 percent.

**Chart 2: Contribution of sources to Own Generation, Percent**



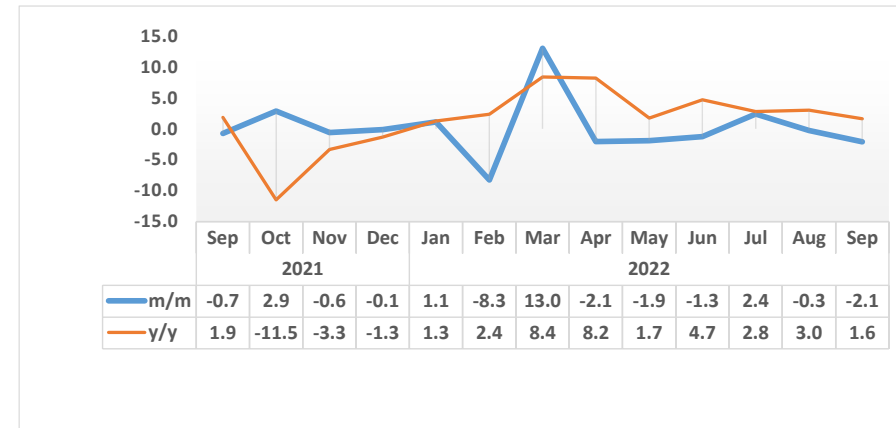
- The local production of electricity for September 2022 stood at 87 212 MWh. Ruacana power station produced 48 403 MWh (55.5 %) while the Independent Power Producers (IPP) collectively generated 29 339 MWh (33.6%) of electricity.

**Chart 3: Electricity Source Index, Percent**



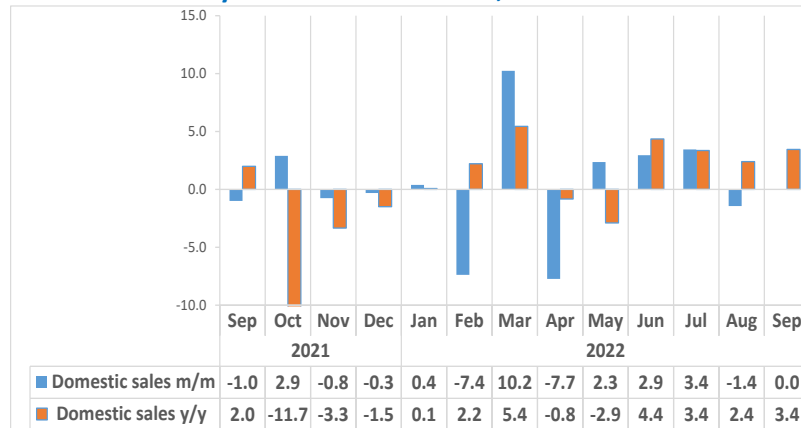
- The **Import Index** recorded an increase of 2.6 percent in September 2022, compared a decline of 0.2 percent that was registered in August 2022. However, on an annual basis, the index declined by 10.8 percent.
- A total of 259 414 MWh of electricity was imported into the country in September 2022. Electricity was mainly sourced from Zesco in Zambia (50.0%), followed by Eskom Aggeneis in South Africa (19.9%), Day Ahead Market-SAPP (12.7%) and Eskom Orange River (4.2%) in the third and fourth place, respectively.

**Chart 4: Electricity Sales Composite Index, Percent**



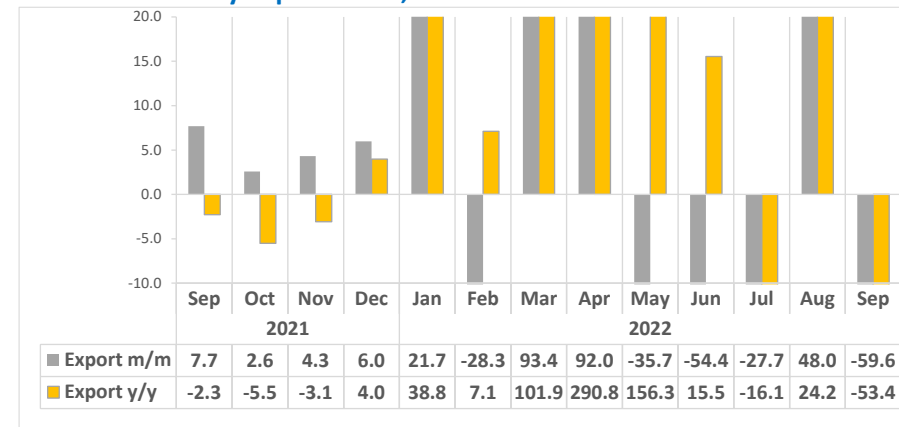
- The **Electricity Sales Composite Index** for September 2022 recorded a monthly decline of 2.1 percent, similarly to a decline of 0.3 percent recorded in August 2022. On the other hand, annually the index recorded an increase of 1.6 percent.
- The monthly decline in the index was mainly due to a reduction in exported electricity by 59.6 percent (Chart 6).

**Chart 5: Electricity Domestic Sales Index, Percent**



- The **Domestic Sales Index** in September 2022 remained unchanged month on month from a decline of 1.4 percent posted a month earlier. The index registered an increase of 3.4 percent on an annual basis.
- Electricity was mainly sold to Redistributors - LPU (66.1%) and Mining (25.8%) on the domestic market, while Eskom Orange River obtained a share of 3.6 percent.
- The total amount of electricity sold locally increased from 303 106 MWh recorded during August 2022 to 303 158 MWh registered during the period under review. Whereas 293 074 MWh of electricity was sold in the corresponding period of 2021.

**Chart 6: Electricity Export Index, Percent<sup>1</sup>**



- The **Export Sales Index** declined by 59.6 percent in September 2022, from an increase of 48.0 percent registered a month earlier. The decline in export was reflected in the supply of electricity sales to STEM Sales-SAPP, Botswana Power Corp and South Africa Rietfontein. Moreover, the index declined by 53.4 percent yearly when compared to a reduction of 2.3 percent posted in the corresponding month of 2021.
- In the month of September 2022, Namibia exported a total of 4 507 MWh of electricity of which 35.9 percent of electricity was supplied to Angola, followed by Botswana (28.7%) while STEM Sales and South Africa received a share of 24.0 and 11.4 percent.

<sup>1</sup> This graph is limited to -10 percent and 20 percent for better presentation.

**Table 1: Electricity Sources in MWH**

Year	Month	Own generated	Import
2020	Jan	249,327	171,655
	Feb	260,165	171,759
	Mar	268,742	252,506
	Apr	270,785	136,187
	May	234,883	176,429
	Jun	145,495	226,701
	Jul	156,692	227,982
	Aug	176,845	209,579
	Sep	155,062	213,956
	Oct	139,242	248,759
	Nov	110,168	255,038
	Dec	140,822	243,109
2021	Jan	98,191	255,534
	Feb	66,648	238,395
	Mar	65,547	252,906
	Apr	95,326	250,225
	May	95,027	251,119
	Jun	64,155	265,577
	Jul	48,192	297,297
	Aug	43,152	301,495
	Sep	50,664	290,922
	Oct	61,058	290,893
	Nov	76,294	270,322
	Dec	89,054	263,899

**Table 1: Electricity Sources in MWH Continue...**

Year	Month	Own generated	Import
2022	Jan	93,044	252,026
	Feb	65,362	255,286
	Mar	139,261	221,067
	Apr	265,053	117,300
	May	152,261	204,296
	Jun	98,405	247,188
	Jul	100,515	253,554
	Aug	101,360	252,948
	Sep	87,212	259,414

**Table 2: Electricity sources index (2015=100)**

Year	Month	Own generated Index	Import Index	Electricity Sources Composite Index
<b>2020</b>	Jan	225.7	72.1	<b>120.7</b>
	Feb	235.5	72.1	<b>123.9</b>
	Mar	243.2	106.0	<b>149.5</b>
	Apr	245.1	57.2	<b>116.7</b>
	May	212.6	74.1	<b>117.9</b>
	Jun	131.7	95.2	<b>106.7</b>
	Jul	141.8	95.7	<b>110.3</b>
	Aug	160.1	88.0	<b>110.8</b>
	Sep	140.3	89.8	<b>105.8</b>
	Oct	126.0	104.4	<b>111.3</b>
	Nov	99.7	107.0	<b>104.7</b>
	Dec	127.5	102.0	<b>110.1</b>
<b>2021</b>	Jan	88.9	107.3	<b>101.4</b>
	Feb	60.3	100.1	<b>87.5</b>
	Mar	59.3	106.2	<b>91.3</b>
	Apr	86.3	105.0	<b>99.1</b>
	May	86.0	105.4	<b>99.3</b>
	Jun	58.1	111.5	<b>94.6</b>
	Jul	43.6	124.8	<b>99.1</b>
	Aug	39.1	126.5	<b>98.8</b>
	Sep	45.9	122.1	<b>98.0</b>
	Oct	55.3	122.1	<b>100.9</b>
	Nov	69.1	113.5	<b>99.4</b>
	Dec	80.6	110.8	<b>101.2</b>

**Table 2: Electricity sources index (2015=100) Continue**

Year	Month	Own generated Index	Import Index	Electricity Sources Composite Index
<b>2022</b>	Jan	84.2	105.8	<b>99.0</b>
	Feb	59.2	107.2	<b>91.9</b>
	Mar	126.0	92.8	<b>94.8</b>
	Apr	239.9	49.2	<b>99.8</b>
	May	137.8	85.8	<b>126.1</b>
	Jun	89.1	103.8	<b>99.1</b>
	Jul	91.0	106.4	<b>101.5</b>
	Aug	91.7	106.2	<b>101.6</b>
	Sep	78.9	94.4	<b>89.5</b>

**Table 3: Electricity Sales in MWH**

Year	Month	Domestic Sales	Export Sales
<b>2020</b>	Jan	293,012	9,741
	Feb	263,685	9,854
	Mar	345,424	9,445
	Apr	261,738	9,029
	May	268,139	8,600
	Jun	279,446	9,359
	Jul	289,489	9,704
	Aug	295,368	9,809
	Sep	287,338	9,895
	Oct	299,602	10,497
	Nov	282,311	10,674
	Dec	302,906	10,544
<b>2021</b>	Jan	299,283	9,608
	Feb	271,421	8,931
	Mar	290,056	9,164
	Apr	284,527	9,089
	May	297,400	8,915
	Jun	284,881	9,015
	Jul	297,535	8,978
	Aug	296,030	8,979
	Sep	293,074	9,668
	Oct	301,575	9,917
	Nov	299,292	10,346
	Dec	298,355	10,964

**Electricity Sales in MWH Continue...**

Year	Month	Domestic Sales	Export Sales
<b>2022</b>	Jan	299,509	13,339
	Feb	277,413	9,566
	Mar	305,817	18,501
	Apr	282,149	35,519
	May	288,780	22,849
	Jun	297,285	10,415
	Jul	307,537	7,535
	Aug	303,106	11,149
	Sep	303,158	4,507

**Table 4: Electricity sales index**

Year	Month	Domestic sales Index	Export Index	Electricity Sales Composite Index
<b>2020</b>	Jan	108.9	125.2	<b>109.3</b>
	Feb	98.0	126.7	<b>98.8</b>
	Mar	128.4	121.4	<b>128.2</b>
	Apr	97.3	116.1	<b>97.8</b>
	May	99.6	110.5	<b>99.9</b>
	Jun	103.8	120.3	<b>104.3</b>
	Jul	107.6	124.7	<b>108.1</b>
	Aug	109.8	126.1	<b>110.2</b>
	Sep	106.8	127.2	<b>107.4</b>
	Oct	126.9	134.9	<b>127.1</b>
	Nov	115.1	137.2	<b>115.7</b>
	Dec	112.6	135.5	<b>113.2</b>
<b>2021</b>	Jan	111.2	123.5	<b>111.6</b>
	Feb	100.9	114.8	<b>101.3</b>
	Mar	107.8	117.8	<b>108.1</b>
	Apr	105.7	116.8	<b>106.0</b>
	May	110.5	114.6	<b>110.6</b>
	Jun	105.9	115.9	<b>106.1</b>
	Jul	110.6	115.4	<b>110.7</b>
	Aug	110.0	115.4	<b>110.2</b>
	Sep	108.9	124.3	<b>109.3</b>
	Oct	112.1	127.5	<b>112.5</b>
	Nov	111.2	133.0	<b>111.8</b>
	Dec	110.9	140.9	<b>111.7</b>

**Electricity sales index Continue...**

Year	Month	Domestic sales Index	Export Index	Electricity Sales Composite Index
<b>2022</b>	Jan	125.7	171.5	<b>127.0</b>
	Feb	116.4	123.0	<b>116.6</b>
	Mar	128.4	237.8	<b>131.4</b>
	Apr	118.4	456.5	<b>127.9</b>
	May	121.2	293.7	<b>126.1</b>
	Jun	124.8	133.9	<b>125.0</b>
	Jul	129.1	96.8	<b>128.2</b>
	Aug	127.2	143.3	<b>127.7</b>
	Sep	127.2	57.9	<b>125.3</b>



**Methodology** : Graphical and tabular analysis

**Data Sources** : The data source for the volume of electricity is sourced from Nam-power. These are data on domestic and export sale, Own Generation and import sources. The Production is in kilowatts per hour (kWh) for all the variables.

**Index calculation:** The index of sales and sources weighted uses the volume data of 2015.

**Conversion** : 1 basis point = 0.01 percent