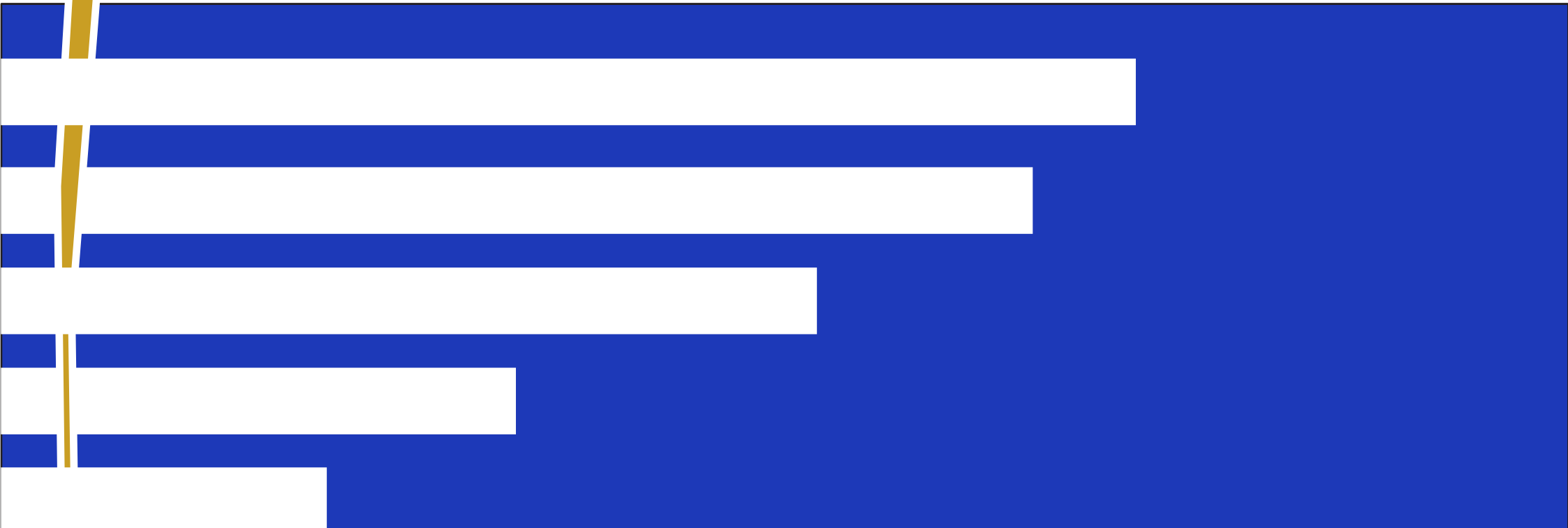


Namibia Statistics  
Agency

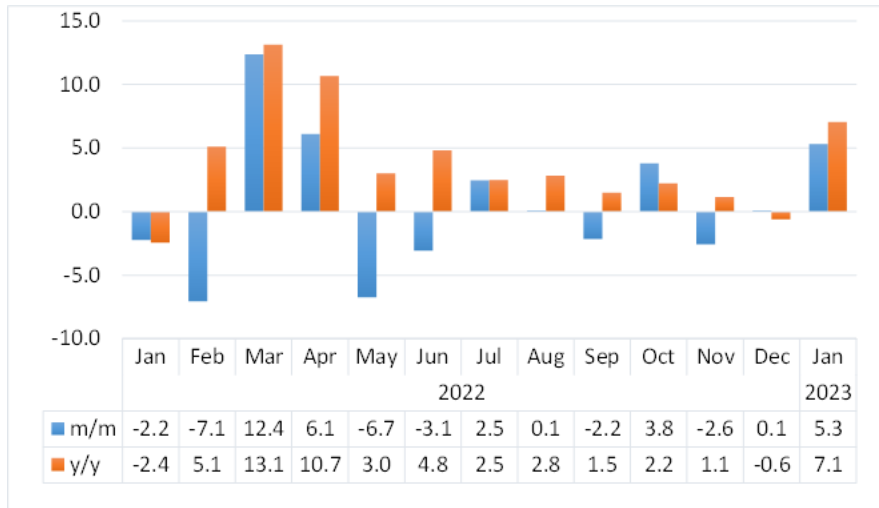


# ELECTRICITY REPORT

January 2023

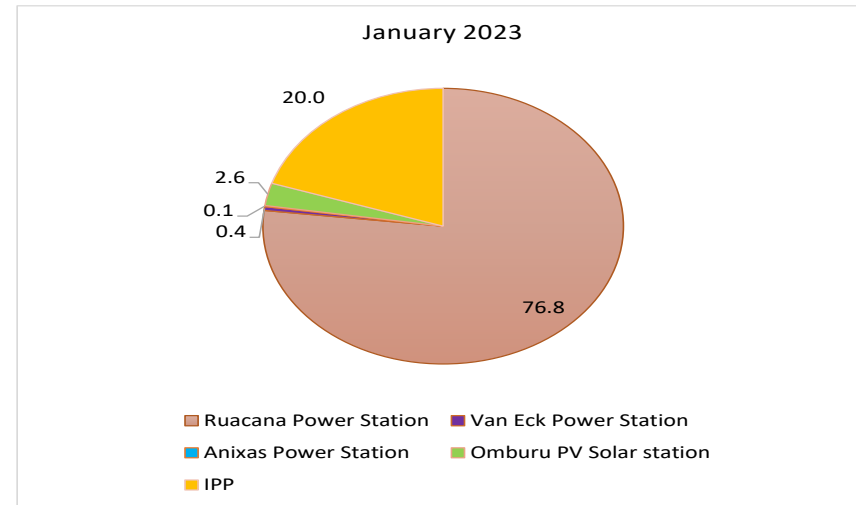


**Chart 1: Electricity Sources Composite Index, Percent**



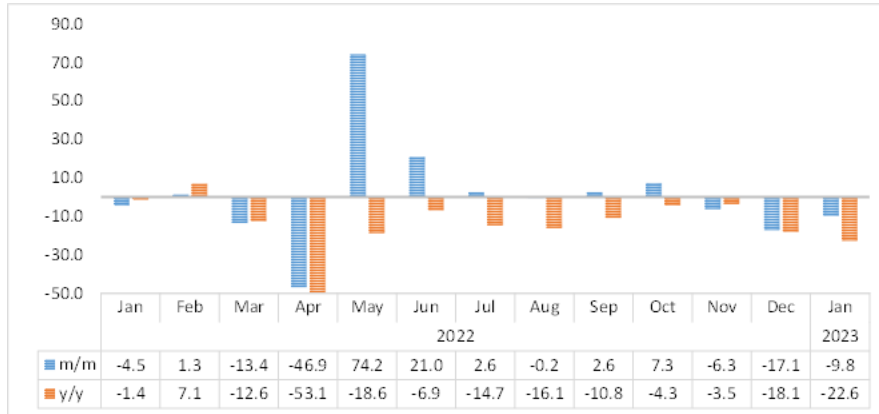
- The **Electricity Sources Composite Index**, which is composed of own generation (local production) and imported electricity for the month of January 2023, posted an increase of 5.3 percent compared to a marginal increase of 0.1 percent recorded during the preceding month. Moreover, the index recorded an increase of 7.1 percent on a yearly basis.
- The monthly increase was derived from local generation of electricity which recorded an increase of 29.6 percent.

**Chart 2: Contribution of Sources to Own Generation, Percent**



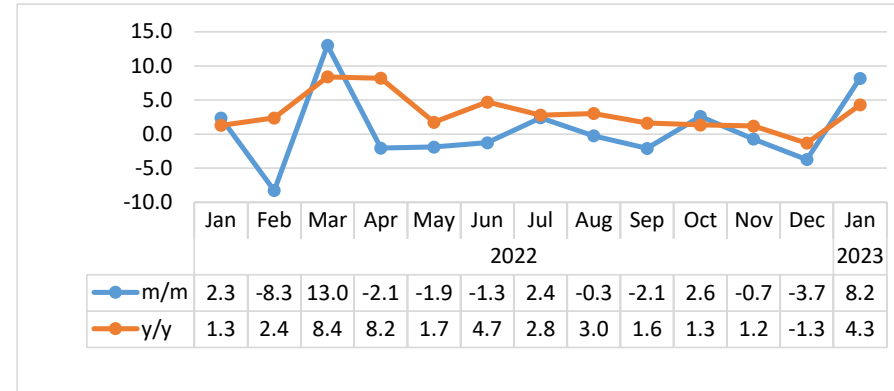
- The local production of electricity for January 2023 stood at 174 396 MWh. Ruacana power station produced the highest electricity of 133 970 MWh (76.8%), followed by the Independent Power Producers (IPP) which collectively generated 34 815 MWh (20.0%) of electricity.

**Chart 3: Electricity Import Index, Percent**



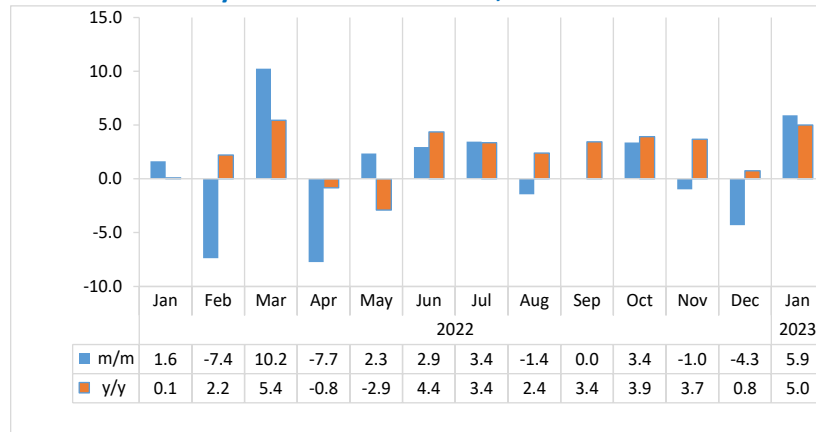
- The **Electricity Import Index** recorded a monthly decline of 9.8 percent in January 2023, compared to a decline of 17.1 percent that was recorded in December 2022. Moreover, on an annual basis the index dropped by 22.6 percent.
- A total of 195 004 MWh of electricity was imported during January 2023. Electricity was mainly sourced from Zesco in Zambia (55.1%), followed by Eskom Aggenesis - South Africa (19.5%) and ZPC Zimbabwe (16.2%).

**Chart 4: Electricity Sales Composite Index, Percent**



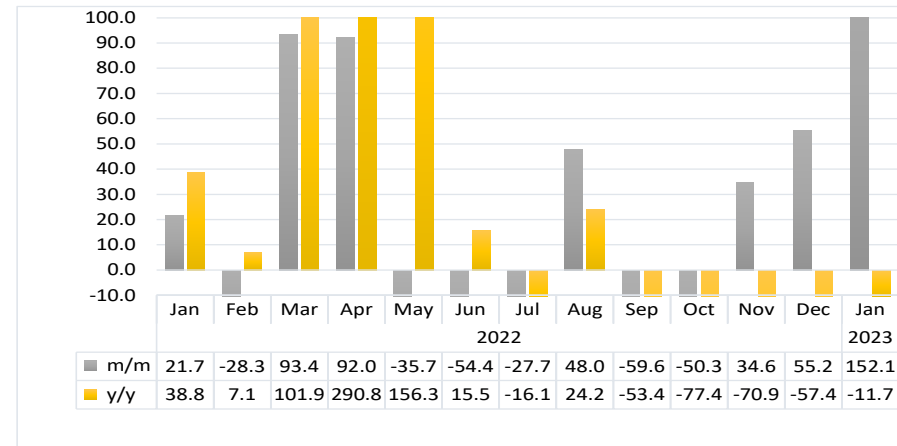
- The **Electricity Sales Composite Index** for January 2023 recorded a monthly increase of 8.2 percent, compared to a decline of 3.7 percent recorded in December 2022. Additionally, annually the index recorded a growth of 4.3 percent. The monthly increase in the index resulted from an increase of Export and domestic sales.

**Chart 5: Electricity Domestic Sales Index, Percent**



- The **Electricity Domestic Sales Index** in January 2023 increased by 5.9 percent month on month, up from a decline of 4.3 percent registered a month earlier. Furthermore, the index registered a growth of 5.0 percent year on year.
- Electricity was mainly sold to Redistributors - LPU (64.4%) and Mining (26.6%) on the domestic market, while Eskom Orange River obtained a share of 3.4 percent of the total domestic electricity sales.
- The total amount of electricity sold locally increased from 296 953 MWh recorded in December 2022 to 314 507 MWh recorded during the period under review. Whereas 299 509 MWh of electricity was sold in January 2022.

**Chart 6: Electricity Export Index, Percent<sup>1</sup>**



- The **Export Sales Index** grew by 152.1 percent in January 2023, compared to an increase of 55.2 percent registered a month earlier. However, the index registered a decline of 11.7 percent yearly.
- During the period under review, Namibia exported a total of 11 777 MWh of electricity of which 81.2 percent was supplied to STEM Sales-SAPP, followed by Botswana (9.3%), while 5.6 percent of export was destined to South Africa.

<sup>1</sup> This chart is limited to -10 percent and 20 percent for better presentation.

**Table 1: Electricity Sources in MWH**

Year	Month	Own generated	Import
<b>2020</b>	Jan	249,327	171,655
	Feb	260,165	171,759
	Mar	268,742	252,506
	Apr	270,785	136,187
	May	234,883	176,429
	Jun	145,495	226,701
	Jul	156,692	227,982
	Aug	176,845	209,579
	Sep	155,062	213,956
	Oct	139,242	248,759
	Nov	110,168	255,038
	Dec	140,822	243,109
<b>2021</b>	Jan	98,191	255,534
	Feb	66,648	238,395
	Mar	65,547	252,906
	Apr	95,326	250,225
	May	95,027	251,119
	Jun	64,155	265,577
	Jul	48,192	297,297
	Aug	43,152	301,495
	Sep	50,664	290,922
	Oct	61,058	290,893
	Nov	76,294	270,322
	Dec	89,054	263,899

**Table 1: Electricity Sources in MWH Continue...**

Year	Month	Own generated	Import
<b>2022</b>	Jan	93,044	252,026
	Feb	65,362	255,286
	Mar	139,261	221,067
	Apr	265,053	117,300
	May	152,261	204,296
	Jun	98,405	247,188
	Jul	100,515	253,554
	Aug	101,360	252,948
	Sep	87,212	259,414
	Oct	81,558	278,245
	Nov	89,789	260,750
	Dec	134,559	216,217
<b>2023</b>	Jan	174,396	195,004

**Table 2: Electricity sources index (2015=100)**

Year	Month	Own generated Index	Import Index	Electricity Sources Composite Index
2020	Jan	225.7	72.1	120.7
	Feb	235.5	72.1	123.9
	Mar	243.2	106.0	149.5
	Apr	245.1	57.2	116.7
	May	212.6	74.1	117.9
	Jun	131.7	95.2	106.7
	Jul	141.8	95.7	110.3
	Aug	160.1	88.0	110.8
	Sep	140.3	89.8	105.8
	Oct	126.0	104.4	111.3
	Nov	99.7	107.0	104.7
	Dec	127.5	102.0	110.1
2021	Jan	88.9	107.3	101.4
	Feb	60.3	100.1	87.5
	Mar	59.3	106.2	91.3
	Apr	86.3	105.0	99.1
	May	86.0	105.4	99.3
	Jun	58.1	111.5	94.6
	Jul	43.6	124.8	99.1
	Aug	39.1	126.5	98.8
	Sep	45.9	122.1	98.0
	Oct	55.3	122.1	100.9
	Nov	69.1	113.5	99.4
	Dec	80.6	110.8	101.2

**Table 2: Electricity sources index (2015=100) Continue**

Year	Month	Own generated Index	Import Index	Electricity Sources Composite Index
2022	Jan	84.2	105.8	99.0
	Feb	59.2	107.2	91.9
	Mar	126.0	92.8	103.3
	Apr	239.9	49.2	109.6
	May	137.8	85.8	102.2
	Jun	89.1	103.8	99.1
	Jul	91.0	106.4	101.5
	Aug	91.7	106.2	101.6
	Sep	78.9	108.9	99.4
	Oct	73.8	116.8	103.2
	Nov	81.3	109.4	100.5
	Dec	121.8	90.8	100.6
2023	Jan	157.8	81.9	105.9

**Table 3: Electricity Sales in MWH**

Year	Month	Domestic Sales	Export Sales
2020	Jan	293,012	9,741
	Feb	263,685	9,854
	Mar	345,424	9,445
	Apr	261,738	9,029
	May	268,139	8,600
	Jun	279,446	9,359
	Jul	289,489	9,704
	Aug	295,368	9,809
	Sep	287,338	9,895
	Oct	299,602	10,497
	Nov	282,311	10,674
	Dec	302,423	10,544
2021	Jan	298,848	9,608
	Feb	271,421	8,931
	Mar	290,056	9,164
	Apr	284,527	9,089
	May	297,400	8,915
	Jun	284,881	9,015
	Jul	297,535	8,978
	Aug	296,030	8,979
	Sep	293,074	9,668
	Oct	301,575	9,917
	Nov	299,292	10,346
	Dec	294,724	10,964

**Electricity Sales in MWH Continue...**

Year	Month	Domestic Sales	Export Sales
2022	Jan	299,509	13,339
	Feb	277,413	9,566
	Mar	305,817	18,501
	Apr	282,149	35,519
	May	288,780	22,849
	Jun	297,285	10,415
	Jul	307,537	7,535
	Aug	303,106	11,149
	Sep	303,158	4,507
	Oct	313,408	2,238
	Nov	310,318	3,011
	Dec	296,953	4,671
2023	Jan	314,507	11,777

**Table 4: Electricity sales index**

Year	Month	Domes- tic sales Index	Export Index	Electricity Sales Com- posite In- dex
<b>2020</b>	Jan	108.9	125.2	109.3
	Feb	98.0	126.7	98.8
	Mar	128.4	121.4	128.2
	Apr	97.3	116.1	97.8
	May	99.6	110.5	99.9
	Jun	103.8	120.3	104.3
	Jul	107.6	124.7	108.1
	Aug	109.8	126.1	110.2
	Sep	106.8	127.2	107.4
	Oct	126.9	134.9	127.1
	Nov	115.1	137.2	115.7
	Dec	112.6	135.5	113.2
<b>2021</b>	Jan	111.2	123.5	111.6
	Feb	100.9	114.8	101.3
	Mar	107.8	117.8	108.1
	Apr	105.7	116.8	106.0
	May	110.5	114.6	110.6
	Jun	105.9	115.9	106.1
	Jul	110.6	115.4	110.7
	Aug	110.0	115.4	110.2
	Sep	108.9	124.3	109.3
	Oct	112.1	127.5	112.5
	Nov	111.2	133.0	111.8
	Dec	109.5	140.9	110.4

**Electricity sales index Continue...**

Year	Month	Domestic sales Index	Export In- dex	Electricity Sales Compo- site Index
<b>2022</b>	Jan	111.3	171.5	113.0
	Feb	103.1	123.0	103.6
	Mar	113.6	237.8	117.1
	Apr	104.8	456.5	114.7
	May	107.3	293.7	112.5
	Jun	110.5	133.9	111.1
	Jul	114.3	96.8	113.8
	Aug	112.6	143.3	113.5
	Sep	112.7	57.9	111.1
	Oct	116.5	28.8	114.0
	Nov	115.3	38.7	113.2
	Dec	110.4	60.0	108.9
	<b>2023</b>	Jan	116.9	151.4



**Methodology** : Graphical and tabular analysis

**Data Sources** : The data source for the volume of electricity is sourced from Nam-power. These are data on domestic and export sale, Own Generation and import sources. The Production is in kilowatts per hour (kWh) for all the variables.

**Index calculation:** The index of sales and sources weighted uses the volume data of 2015.

**Conversion** : 1 basis point = 0.01 percent