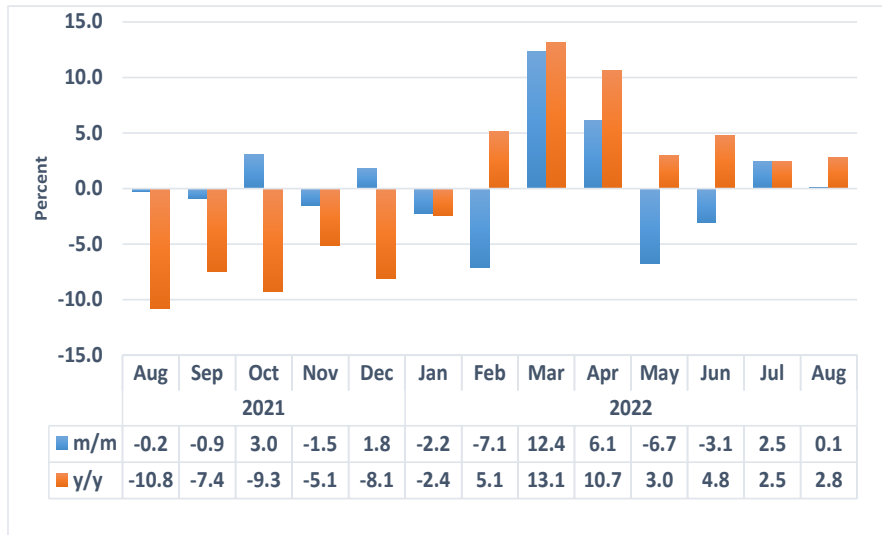
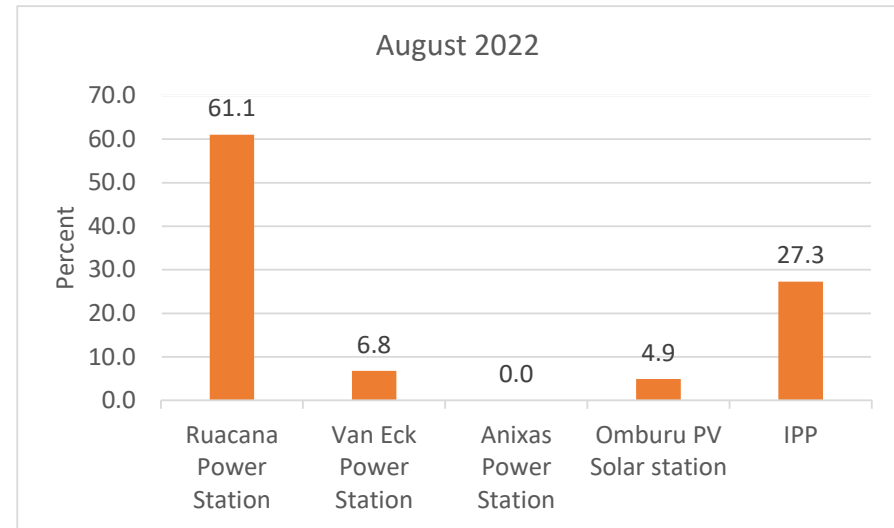


Chart 1: Electricity Sources Composite Index, Percent



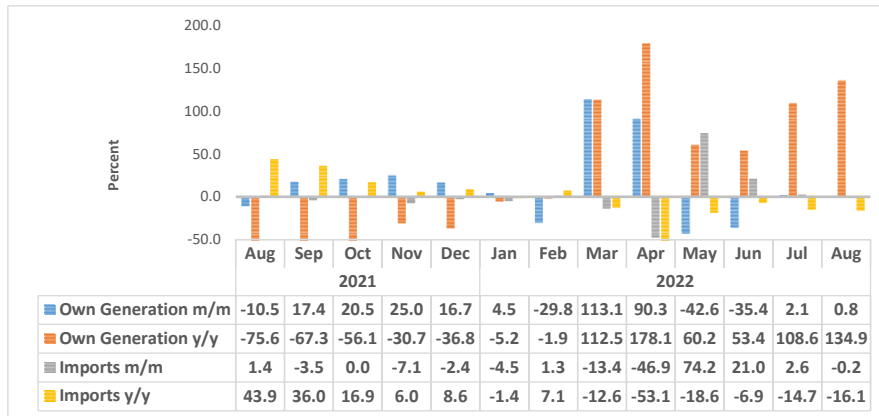
- The **Electricity Sources Composite Index**, which is composed of own generation (local production) and imported electricity for the month of August 2022, posted a slow growth of 0.1 percent compared to a growth of 2.5 percent recorded during the preceding month. While, on yearly basis, the index recorded an increase of 2.8 percent.
- The slow growth recorded on monthly basis emanated from own generation of electricity which recorded a slow growth of 0.8 percent and import of electricity that contracted by 0.2 percent.

Chart 2: Contribution of sources to Own Generation, Percent



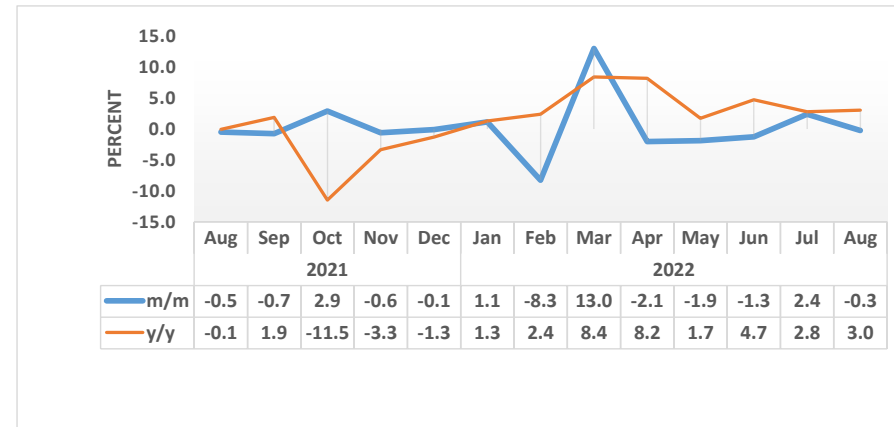
- The local production of electricity for August 2022 stood at 101 360 MWh compared to 100 515 MWh produced in July 2022. Ruacana power station produced 61 891 MWh (61.1%) while 27 633 MWh (27.3%) of electricity that was collectively generated by the Independent Power Producers (IPP).

Chart 3: Electricity Source Index, Percent



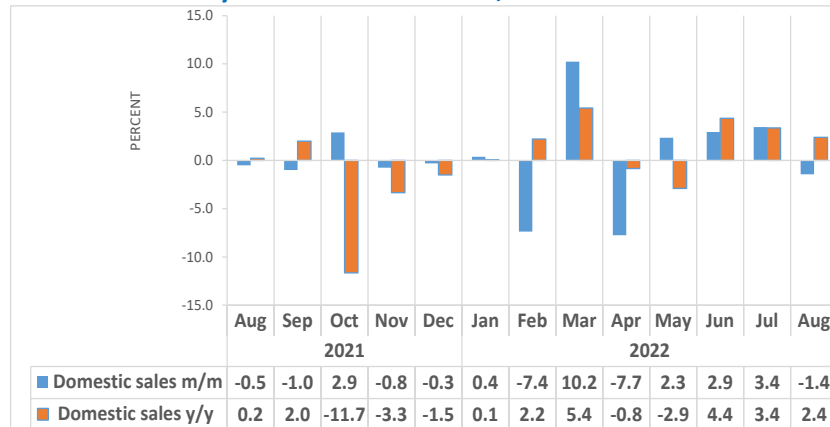
- The **Import Index** recorded a marginal monthly decline of 0.2 percent in August 2022, compared to an increase of 2.6 percent that was registered in July 2022. Moreover, the index declined further by 16.1 percent year on year.
- A total of 252 948 MWh of electricity was imported into the country in August 2022. The electricity was mainly sourced from Zesco in Zambia (52.6%), followed by Eskom Aggeneis in South Africa (20.3%), ZPC in Zimbabwe (15.2%) and Day Ahead Market-SAPP (7.4%).

Chart 4: Electricity Sales Composite Index, Percent



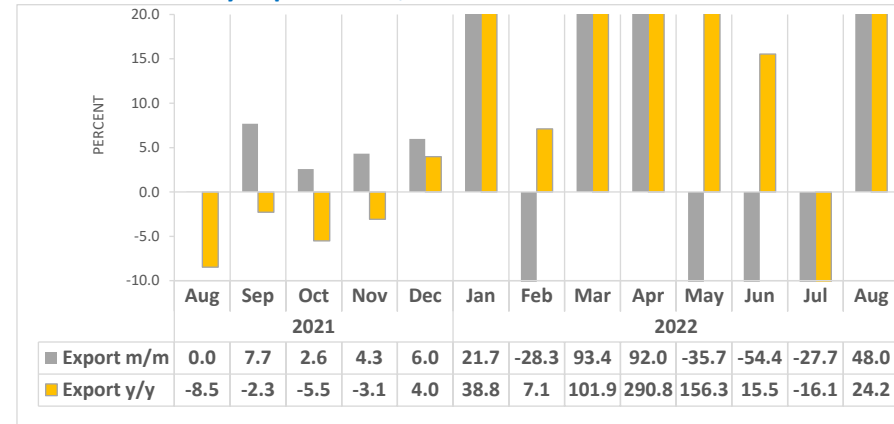
- The **Electricity Sales Composite Index** for August 2022 recorded a marginal monthly decline of 0.3 percent, in contrast to an increase of 2.4 percent recorded in July 2022. Annually, the index recorded an increase of 3.0 percent.
- The monthly decline in the index was mainly due to a reduction in domestic sales of electricity that contracted by 1.4 percent (Chart 4).

Chart 5: Electricity Domestic Sales Index, Percent



- The **Domestic Sales Index** recorded a decline of 1.4 percent month on month in August 2022 from a growth of 3.4 percent posted a month earlier. The index registered an increase of 2.4 percent on an annual basis.
- Electricity was mainly sold to Redistributors - LPU (68.1%) and Mining (24.4%) on the domestic market, while Eskom Orange River accounted for a share of 3.7 percent.
- The total amount of electricity sold locally decreased from 307 537 MW recorded during July 2022 to 303 106 MW registered during the period under review. Whereas 296 030 MW of electricity was sold in the corresponding period of 2021.

Chart 6: Electricity Export Index, Percent



- The **Export Sales Index** increased by 48.0 percent in August 2022, from a decline of 27.7 percent registered a month earlier. The increase in exports was mainly reflected in exports of electricity sales to STEM Sales-SAPP. On an annual basis, the index increased by 24.2 percent when compared to a reduction of 8.5 percent posted in the corresponding year of 2021.
- In the month of August 2022, Namibia exported a total of 11 149 MW of electricity of which 58.8 percent of electricity went to STEM Sales-SAPP, followed by Botswana (32.2%) while South Africa and Angola received a share of 4.7 and 4.3 percent.

Table 1: Electricity Sources in MWH

| Year | Month | Own generated | Import |
|------|-------|---------------|---------|
| 2020 | Jan | 249,327 | 171,655 |
| | Feb | 260,165 | 171,759 |
| | Mar | 268,742 | 252,506 |
| | Apr | 270,785 | 136,187 |
| | May | 234,883 | 176,429 |
| | Jun | 145,495 | 226,701 |
| | Jul | 156,692 | 227,982 |
| | Aug | 176,845 | 209,579 |
| | Sep | 155,062 | 213,956 |
| | Oct | 139,242 | 248,759 |
| | Nov | 110,168 | 255,038 |
| | Dec | 140,822 | 243,109 |
| 2021 | Jan | 98,191 | 255,534 |
| | Feb | 66,648 | 238,395 |
| | Mar | 65,547 | 252,906 |
| | Apr | 95,326 | 250,225 |
| | May | 95,027 | 251,119 |
| | Jun | 64,155 | 265,577 |
| | Jul | 48,192 | 297,297 |
| | Aug | 43,152 | 301,495 |
| | Sep | 50,664 | 290,922 |
| | Oct | 61,058 | 290,893 |
| | Nov | 76,294 | 270,322 |
| | Dec | 89,054 | 263,899 |

Table 1: Electricity Sources in MWH Continue...

| Month | Own generated | Import |
|-------|---------------|---------|
| Jan | 93,044 | 252,026 |
| Feb | 65,362 | 255,286 |
| Mar | 139,261 | 221,067 |
| Apr | 265,053 | 117,300 |
| May | 152,261 | 204,296 |
| Jun | 98,405 | 247,188 |
| Jul | 100,515 | 253,554 |
| Aug | 101,360 | 252,948 |

Table 2: Electricity sources index (2015=100)

| Year | Month | Own generated Index | Import Index | Electricity Sources Composite Index |
|-------------|-------|---------------------|--------------|-------------------------------------|
| 2020 | Jan | 225.7 | 72.1 | 120.7 |
| | Feb | 235.5 | 72.1 | 123.9 |
| | Mar | 243.2 | 106.0 | 149.5 |
| | Apr | 245.1 | 57.2 | 116.7 |
| | May | 212.6 | 74.1 | 117.9 |
| | Jun | 131.7 | 95.2 | 106.7 |
| | Jul | 141.8 | 95.7 | 110.3 |
| | Aug | 160.1 | 88.0 | 110.8 |
| | Sep | 140.3 | 89.8 | 105.8 |
| | Oct | 126.0 | 104.4 | 111.3 |
| | Nov | 99.7 | 107.0 | 104.7 |
| | Dec | 127.5 | 102.0 | 110.1 |
| 2021 | Jan | 88.9 | 107.3 | 101.4 |
| | Feb | 60.3 | 100.1 | 87.5 |
| | Mar | 59.3 | 106.2 | 91.3 |
| | Apr | 86.3 | 105.0 | 99.1 |
| | May | 86.0 | 105.4 | 99.3 |
| | Jun | 58.1 | 111.5 | 94.6 |
| | Jul | 43.6 | 124.8 | 99.1 |
| | Aug | 39.1 | 126.5 | 98.8 |
| | Sep | 45.9 | 122.1 | 98.0 |
| | Oct | 55.3 | 122.1 | 100.9 |
| | Nov | 69.1 | 113.5 | 99.4 |
| | Dec | 80.6 | 110.8 | 101.2 |

Table 2: Electricity sources index (2015=100) Continue

| Year | Month | Own generated Index | Import Index | Electricity Sources Composite Index |
|-------------|-------|---------------------|--------------|-------------------------------------|
| 2022 | Jan | 84.2 | 105.8 | 99.0 |
| | Feb | 59.2 | 107.2 | 91.9 |
| | Mar | 126.0 | 92.8 | 94.8 |
| | Apr | 239.9 | 49.2 | 99.8 |
| | May | 137.8 | 85.8 | 126.1 |
| | Jun | 89.1 | 103.8 | 99.1 |
| | Jul | 91.0 | 106.4 | 101.5 |
| | Aug | 91.7 | 106.2 | 101.6 |

Table 3: Electricity Sales in MWH

| Year | Month | Domestic Sales | Export Sales |
|-------------|-------|----------------|--------------|
| 2020 | Jan | 293,012 | 9,741 |
| | Feb | 263,685 | 9,854 |
| | Mar | 345,424 | 9,445 |
| | Apr | 261,738 | 9,029 |
| | May | 268,139 | 8,600 |
| | Jun | 279,446 | 9,359 |
| | Jul | 289,489 | 9,704 |
| | Aug | 295,368 | 9,809 |
| | Sep | 287,338 | 9,895 |
| | Oct | 299,602 | 10,497 |
| | Nov | 282,311 | 10,674 |
| | Dec | 302,906 | 10,544 |
| 2021 | Jan | 299,283 | 9,608 |
| | Feb | 271,421 | 8,931 |
| | Mar | 290,056 | 9,164 |
| | Apr | 284,527 | 9,089 |
| | May | 297,400 | 8,915 |
| | Jun | 284,881 | 9,015 |
| | Jul | 297,535 | 8,978 |
| | Aug | 296,030 | 8,979 |
| | Sep | 293,074 | 9,668 |
| | Oct | 301,575 | 9,917 |
| | Nov | 299,292 | 10,346 |
| | Dec | 298,355 | 10,964 |

Electricity Sales in MWH Continue...

| Year | Month | Domestic Sales | Export Sales |
|-------------|-------|----------------|--------------|
| 2022 | Jan | 299,509 | 13,339 |
| | Feb | 277,413 | 9,566 |
| | Mar | 305,817 | 18,501 |
| | Apr | 282,149 | 35,519 |
| | May | 288,780 | 22,849 |
| | Jun | 297,285 | 10,415 |
| | Jul | 307,537 | 7,535 |
| | Aug | 303,106 | 11,149 |

Table 4: Electricity sales index

| Year | Month | Domestic sales Index | Export Index | Electricity Sales Composite Index |
|-------------|-------|----------------------|--------------|-----------------------------------|
| 2020 | Jan | 108.9 | 125.2 | 109.3 |
| | Feb | 98.0 | 126.7 | 98.8 |
| | Mar | 128.4 | 121.4 | 128.2 |
| | Apr | 97.3 | 116.1 | 97.8 |
| | May | 99.6 | 110.5 | 99.9 |
| | Jun | 103.8 | 120.3 | 104.3 |
| | Jul | 107.6 | 124.7 | 108.1 |
| | Aug | 109.8 | 126.1 | 110.2 |
| | Sep | 106.8 | 127.2 | 107.4 |
| | Oct | 126.9 | 134.9 | 127.1 |
| | Nov | 115.1 | 137.2 | 115.7 |
| | Dec | 112.6 | 135.5 | 113.2 |
| 2021 | Jan | 111.2 | 123.5 | 111.6 |
| | Feb | 100.9 | 114.8 | 101.3 |
| | Mar | 107.8 | 117.8 | 108.1 |
| | Apr | 105.7 | 116.8 | 106.0 |
| | May | 110.5 | 114.6 | 110.6 |
| | Jun | 105.9 | 115.9 | 106.1 |
| | Jul | 110.6 | 115.4 | 110.7 |
| | Aug | 110.0 | 115.4 | 110.2 |
| | Sep | 108.9 | 124.3 | 109.3 |
| | Oct | 112.1 | 127.5 | 112.5 |
| | Nov | 111.2 | 133.0 | 111.8 |
| | Dec | 110.9 | 140.9 | 111.7 |

Electricity sales index Continue...

| Year | Month | Domestic sales Index | Export Index | Electricity Sales Composite Index |
|-------------|-------|----------------------|--------------|-----------------------------------|
| 2022 | Jan | 125.7 | 171.5 | 127.0 |
| | Feb | 116.4 | 123.0 | 116.6 |
| | Mar | 128.4 | 237.8 | 131.4 |
| | Apr | 118.4 | 456.5 | 127.9 |
| | May | 121.2 | 293.7 | 126.1 |
| | Jun | 124.8 | 133.9 | 125.0 |
| | Jul | 129.1 | 96.8 | 128.2 |
| | Aug | 127.2 | 143.3 | 127.7 |

Methodology : Graphical and tabular analysis

Data Sources : The data source for the volume of electricity is sourced from Nam-power. These are data on domestic and export sale, Own Generation and import sources. The Production is in kilowatts per hour (kWh) for all the variables.

Index calculation: The index of sales and sources weighted uses the volume data of 2015.

Conversion : 1 basis point = 0.01 percent