



Building Plans Completed Sectoral Report

September 2022

Namibia Statistics Agency

Tel: +264 61 431 3200

P.O. Box 2133

Fax: +264 61 431 3253

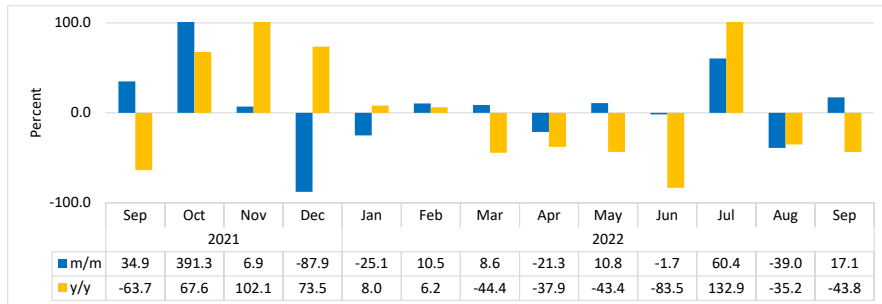
FGI House, Post Street Mall

Email: info@nsa.org.na

www.nsa.org.na

Windhoek Namibia

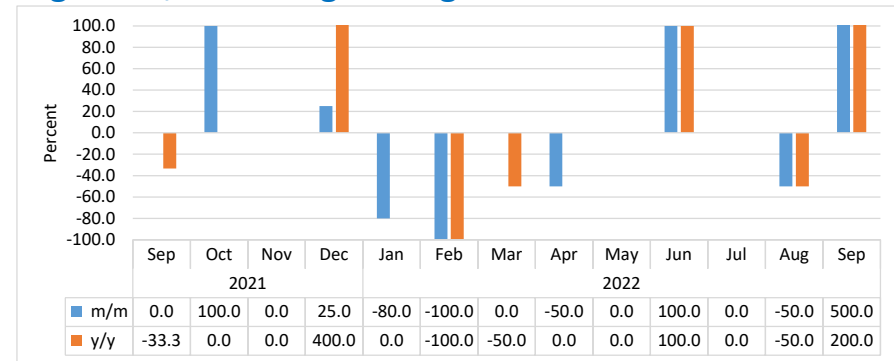
Chart 1: Building Plans Completed Composite Index, Percentage



- The **Composite Index for Building Plans Completed** is made up of ‘Additions and alterations’, Residential, Commercial, Industrial and Institutions and covers the towns of Ongwediva, Walvis Bay, Swakopmund and Windhoek.
- The index for September 2022 rebounded by recording an increase of 17.1 percent on a monthly basis, upward from a deterioration of 39.0 percent registered in the preceding month. The monthly was mainly observed in commercial buildings. However, the index recorded a decline of 43.8 percent year on year (Chart 1).
- A total of 161 permits for building plans completed in all reporting towns were issued both for September 2022 and the preceding month, while 352 permits were supplied in the corresponding month of 2021.
- During the month under review, the total value of building plans completed amounted to N\$148.5 million, with Windhoek continuing with the dominant trend accounting for the largest share of 72.4 percent of the total value. While Swakopmund and Walvis Bay followed with

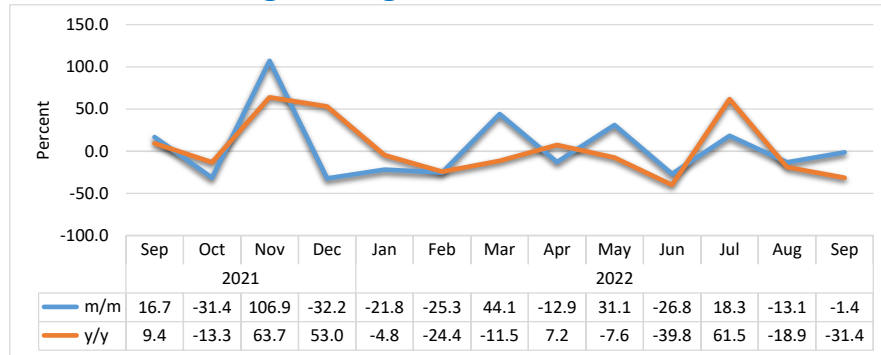
shares of 16.0 percent and 11.1 percent, respectively. Ongwediva contributed the least share of 0.4 percent.

Chart 2: Index for buildings completed for commercial segments, Percentage change



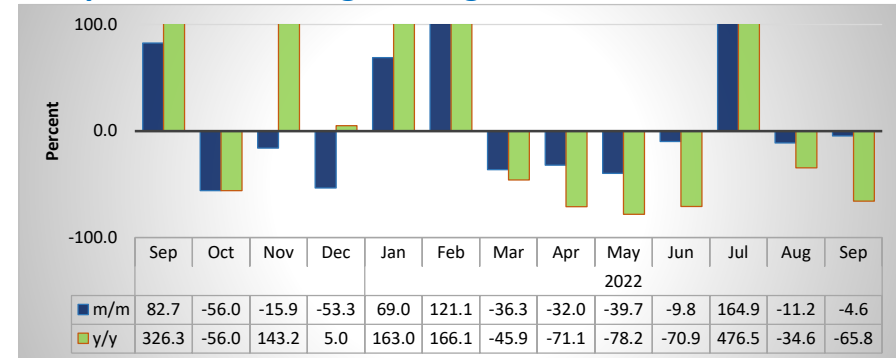
- The **Index for buildings completed for commercial segments** for September 2022 recorded a huge increase of 500.0 percent month on month, upward from a deterioration of 50.0 percent observed a month earlier (Chart 2). Additionally, the index increased by 200.0 percent year on year.
- The huge increase registered monthly for the commercial segments was derived mainly from Windhoek (Triumphant college building in Khomasdal) which recorded an increase of 400.0 percent. Ongwediva and Swakopmund did not register any completed buildings for commercial segments while Walvis Bay registered only 1 permit during the review.
- In September 2022, commercial segments registered only 6 permits for buildings completed, compared to 1 permit and 2 permits that were issued in August 2022 and the corresponding month of 2021.

Chart 3: Index for Buildings Completed of residential segments, Percentage change



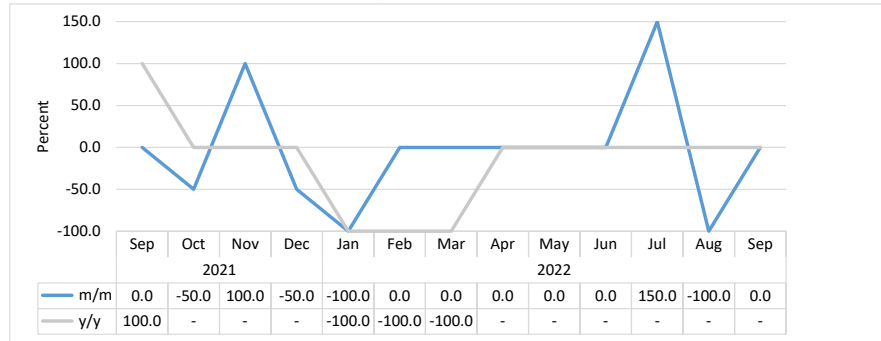
- The **Index for Buildings Completed of Residential segments** for September 2022 declined by 1.4 percent on a monthly basis, better-off when compared to a reduction of 13.1 percent recorded in the preceding month. Moreover, the index declined by 31.4 percent year on year, (Chart 3).
- The reduction of 17.6 percent in residential segments for Swakopmund was the main driver of the monthly decline observed during the review period. On the other hand, both Ongwediva and Windhoek fared well, posting monthly increases of 100.0 percent and 16.0 percent, respectively.
- In September 2022, a total of 72 permits were issued for buildings completed of residential segments, compared to 73 permits and 105 permits that were issued in August 2022 and the corresponding month of 2021, respectively.

Chart 4: Index for Additions & Alterations of buildings completed, Percentage Change



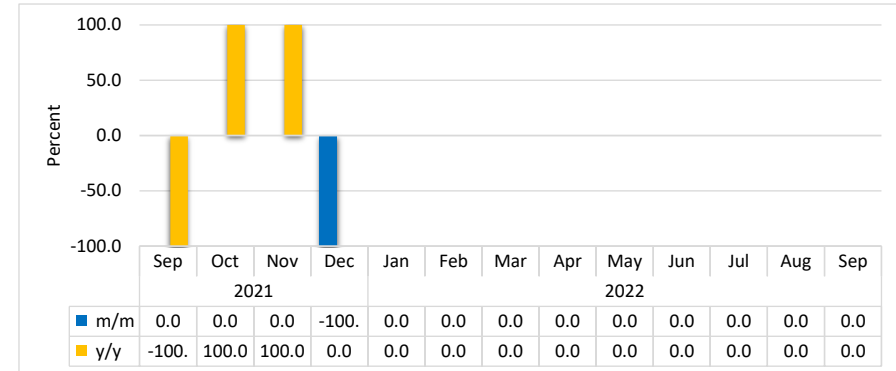
- The **Index for Additions & Alterations** declined by 4.6 percent month on month in September 2022, downward from a deterioration of 11.2 percent registered in the previous month. Moreover, the index posted a huge decline of 65.8 percent year on year (Chart 4).
- The decline recorded on a monthly basis emanates mainly from the towns of Swakopmund and Windhoek, which reported declines of 33.3 percent and 8.5 percent, respectively. However, Walvis Bay registered an increase of 15.8 percent.
- A total of 83 permits for additions and alterations were issued during September 2022, compared to 87 permits and 243 permits issued in August 2022 and the corresponding month of 2021, respectively.

Chart 5: Index for Buildings Completed for Industrial Units, Percentage Change



- The **Index for Buildings Completed for Industrial Units** in September 2022 did not change on a monthly basis compared to a deterioration of 100.0 percent posted in August 2022. There were no valuations done, year on year.
- No permits were issued under the industrial units for September 2022, whereas 2 permits were issued in the corresponding month of 2021.

Chart 6: Index for Buildings Completed of Institutions, Percentage Change



- The **Index for Buildings Completed for Institutions segments** continued with a trend of nil percent between the months of January 2022 and September 2022. The index recorded no change on an annual basis, (Chart 6). No permits were issued during the month of September 2022.

Table 1: Indices of Buildings Completed

| Year | Month | Additions & Alterations | Residential | Commercial | Industrial | Institutions | Composite Index |
|------|-------|-------------------------|-------------|------------|------------|--------------|-----------------|
| 2018 | Jan | 237.6 | 63.6 | 51.1 | 0.0 | 0.0 | 71.6 |
| | Feb | 423.9 | 53.7 | 0.0 | 0.0 | 0.0 | 90.7 |
| | Mar | 212.0 | 97.5 | 0.0 | 53.3 | 10810.8 | 415.5 |
| | Apr | 531.6 | 125.8 | 0.0 | 80.0 | 10810.8 | 485.2 |
| | May | 420.5 | 72.1 | 25.5 | 26.7 | 0.0 | 108.0 |
| | Jun | 502.6 | 159.7 | 51.1 | 80.0 | 0.0 | 176.6 |
| | Jul | 560.7 | 70.7 | 102.1 | 160.0 | 0.0 | 171.5 |
| | Aug | 517.9 | 93.3 | 51.1 | 53.3 | 0.0 | 142.4 |
| | Sep | 531.6 | 80.6 | 102.1 | 0.0 | 10810.8 | 455.9 |
| | Oct | 449.6 | 50.9 | 178.7 | 26.7 | 0.0 | 119.9 |
| | Nov | 181.2 | 86.2 | 25.5 | 53.3 | 10810.8 | 408.4 |
| | Dec | 172.6 | 125.8 | 127.7 | 53.3 | 0.0 | 111.3 |
| 2019 | Jan | 177.8 | 77.7 | 51.1 | 26.7 | 0.0 | 75.3 |
| | Feb | 95.7 | 53.7 | 102.1 | 0.0 | 10810.8 | 375.4 |
| | Mar | 76.9 | 56.5 | 357.4 | 26.7 | 0.0 | 83.7 |
| | Apr | 116.2 | 94.7 | 0.0 | 53.3 | 0.0 | 74.3 |
| | May | 136.8 | 120.1 | 76.6 | 0.0 | 0.0 | 84.0 |
| | Jun | 369.2 | 138.5 | 153.2 | 0.0 | 0.0 | 137.2 |
| | Jul | 157.3 | 327.9 | 102.1 | 26.7 | 0.0 | 190.2 |
| | Aug | 182.9 | 84.8 | 51.1 | 80.0 | 21621.6 | 742.5 |
| | Sep | 473.5 | 175.3 | 25.5 | 0.0 | 43243.2 | 1455.6 |
| | Oct | 423.9 | 108.8 | 25.5 | 160.0 | 0.0 | 158.8 |
| | Nov | 441.0 | 106.0 | 25.5 | 80.0 | 10810.8 | 464.9 |
| | Dec | 83.8 | 120.1 | 25.5 | 26.7 | 0.0 | 76.8 |
| 2020 | Jan | 88.9 | 114.5 | 0.0 | 53.3 | 10810.8 | 403.8 |
| | Feb | 46.2 | 98.9 | 0.0 | 26.7 | 21621.6 | 708.3 |
| | Mar | 461.5 | 101.8 | 25.5 | 266.7 | 0.0 | 188.4 |
| | Apr | 0.0 | 4.2 | 0.0 | 0.0 | 0.0 | 1.9 |
| | May | 326.5 | 107.4 | 178.7 | 0.0 | 0.0 | 119.3 |
| | Jun | 396.6 | 180.9 | 76.6 | 26.7 | 0.0 | 158.9 |
| | Jul | 147.0 | 354.8 | 102.1 | 0.0 | 0.0 | 194.0 |
| | Aug | 294.0 | 306.7 | 25.5 | 0.0 | 0.0 | 187.0 |
| | Sep | 97.4 | 135.7 | 76.6 | 26.7 | 10810.8 | 416.4 |
| | Oct | 415.4 | 117.3 | 0.0 | 0.0 | 10810.8 | 442.9 |
| | Nov | 63.2 | 128.6 | 0.0 | 0.0 | 10810.8 | 392.7 |
| | Dec | 68.4 | 93.3 | 25.5 | 0.0 | 0.0 | 55.5 |

Table 1: Indices of Buildings Completed continued...

| Year | Month | Additions & Alterations | Residential | Commercial | Industrial | Institutions | Composite Index |
|------|-------|-------------------------|-------------|------------|------------|--------------|-----------------|
| 2021 | Jan | 46.2 | 117.3 | 0.0 | 26.7 | 0.0 | 66.8 |
| | Feb | 100.9 | 110.2 | 25.5 | 26.7 | 0.0 | 75.0 |
| | Mar | 316.2 | 135.7 | 102.1 | 133.3 | 0.0 | 155.7 |
| | Apr | 401.7 | 97.5 | 25.5 | 0.0 | 0.0 | 109.8 |
| | May | 321.4 | 148.4 | 25.5 | 53.3 | 0.0 | 133.5 |
| | Jun | 217.1 | 166.8 | 25.5 | 53.3 | 10810.8 | 450.3 |
| | Jul | 29.1 | 73.5 | 0.0 | 53.3 | 0.0 | 51.1 |
| | Aug | 227.4 | 127.2 | 51.1 | 53.3 | 0.0 | 112.0 |
| | Sep | 415.4 | 148.4 | 51.1 | 53.3 | 0.0 | 151.1 |
| | Oct | 182.9 | 101.8 | 102.1 | 26.7 | 21621.6 | 742.3 |
| | Nov | 153.8 | 210.6 | 102.1 | 53.3 | 21621.6 | 793.5 |
| | Dec | 71.8 | 142.8 | 127.7 | 26.7 | 0.0 | 96.3 |
| 2022 | Jan | 121.4 | 111.7 | 25.5 | 0.0 | 0.0 | 72.1 |
| | Feb | 268.4 | 83.4 | 0.0 | 0.0 | 0.0 | 79.7 |
| | Mar | 170.9 | 120.1 | 51.1 | 0.0 | 0.0 | 86.5 |
| | Apr | 116.2 | 104.6 | 25.5 | 0.0 | 0.0 | 68.1 |
| | May | 70.1 | 137.1 | 25.5 | 0.0 | 0.0 | 75.5 |
| | Jun | 63.2 | 100.4 | 51.1 | 53.3 | 0.0 | 74.2 |
| | Jul | 167.5 | 118.7 | 51.1 | 133.3 | 0.0 | 119.0 |
| | Aug | 148.7 | 103.2 | 25.5 | 0.0 | 0.0 | 72.6 |
| | Sep | 141.9 | 101.8 | 153.2 | 0.0 | 0.0 | 85.0 |

Methodology

Data Sources: Selected local authorities from the following town councils: **Ongwediva**
Swakopmund
Walvis Bay
Windhoek

Base year: 2015

Calculations of index: The NSA monitors the value and number of buildings completed for 24 local authorities monthly. Four of these towns that accounted for 70.3 percent of the total number of all buildings completed in 2015 have been selected for the index compilation.

Conversion: 1 basis point = 0.01 percent